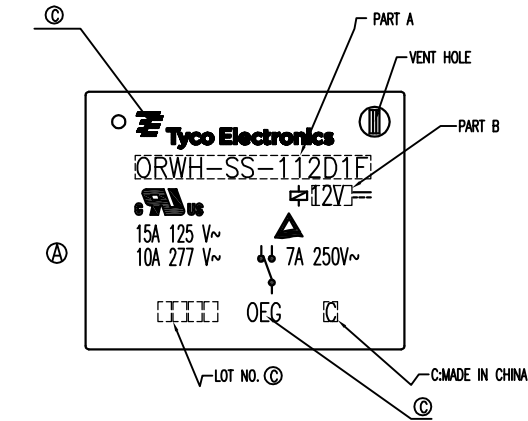
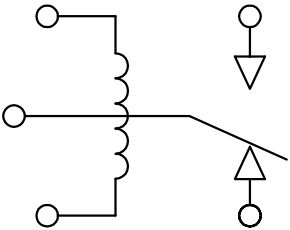


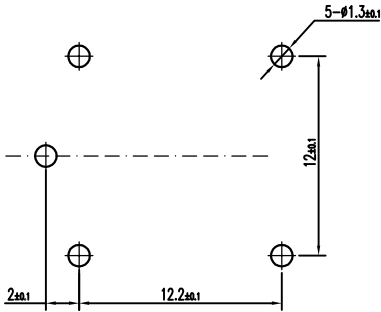
LOC HB	DIST	REVISIONS				
		P	LTR	DESCRIPTION	DATE	DWN APVD
			D	PN. OBSOLETE ECO-12-004810	24APR12	BL.L BHY



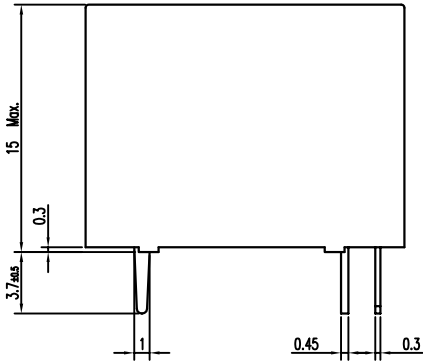
CIRCUIT DIAGRAM (BOTTOM VIEW)



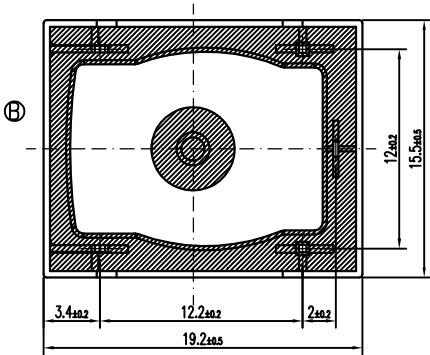
DRILLING DIAGRAM (BOTTOM VIEW)



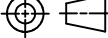
STATUS	PART NO	PART B	PART A	ITEM
OB	1721150-1	3V	ORWH-SS-103D1F	A
ACT	1721150-2	5V	ORWH-SS-105D1F	B
ACT	1721150-3	6V	ORWH-SS-106D1F	C
ACT	1721150-4	9V	ORWH-SS-109D1F	D
ACT	1721150-5	12V	ORWH-SS-112D1F	E
OB	1721150-6	18V	ORWH-SS-118D1F	F
ACT	1721150-7	24V	ORWH-SS-124D1F	G
ACT	1721150-8	48V	ORWH-SS-148D1F	H
OB	1721150-9	3V	ORWH-SH-103D1F	I
ACT	1-1721150-0	5V	ORWH-SH-105D1F	J
OB	1-1721150-1	6V	ORWH-SH-106D1F	K
OB	1-1721150-2	9V	ORWH-SH-109D1F	L
ACT	1-1721150-3	12V	ORWH-SH-112D1F	M
OB	1-1721150-4	18V	ORWH-SH-118D1F	N
ACT	1-1721150-5	24V	ORWH-SH-124D1F	O
ACT	1-1721150-6	48V	ORWH-SH-148D1F	P
ACT	1-1721150-7	24V	ORWH-SH-124D1F	R



NOTE
©1.LOT NO. SYSTEM AS FOLLOWING:
WEEK
YEAR



GENERAL TOLERANCE	
Diagram dimension	Tolerance
0.99mm max.	±0.1mm
1 ~ 2.99mm	±0.2mm
3mm min.	±0.3mm

			DWN	XN.ZHANG
			CHK	WAYNE.PENG
DIMENSIONS: mm		TOLERANCES UNLESS OTHERWISE SPECIFIED:		
	0 PLC	±	APVD	
	1 PLC	±	MJ.HO	
	2 PLC	±	PRODUCT SPEC	
	3 PLC	±	_____	
	4 PLC	±	APPLICATION SPEC	
MATERIAL		FINISH	_____	
SEE MATERIAL TABLE		_____	WEIGHT	

			CUSTOMER DRAWING	

		UV RESIN	UV SEAL (FOR SH)	14
		EPOXY RESIN	SEAL	13
CLASS 155 F		MW79	MAGNETIC WIRE	12
		HCP	COIL TERMINAL	11
UL94 V-0		PBT	BOBBIN	10
UL94 V-0		PBT	CASE	9
		Ag ALLOY	STATIONARY CONTACT	8
		Ag ALLOY	MOVABLE CONTACT	7
		Cu ALLOY	MOVABLE SPRING	6
		Cu ALLOY	NC TERMINAL	5
		Cu ALLOY	NO TERMINAL	4
	Cu PLATED	STEEL	CORE	3
	Cu PLATED	STEEL	ARMATURE FORM C	2
	Ni PLATED	STEEL	YOKE	1
INCOMBUSTIBILITY	TREATMENT	MATERIAL	DESCRIPTION	ITEM



ORWH-1T Cd FREE CUSTOMER DRAWING

SIZE A3	GAGE CODE 00779	DRAWING NO C- 1721150	RESTRIC TO
SCALE 3:1		SHEET 1 OF 1	REV D

Mouser Electronics

Authorized Distributor

Click to View Pricing, Inventory, Delivery & Lifecycle Information:

[TE Connectivity:](#)

[ORWH-SS-112D1F,000](#)