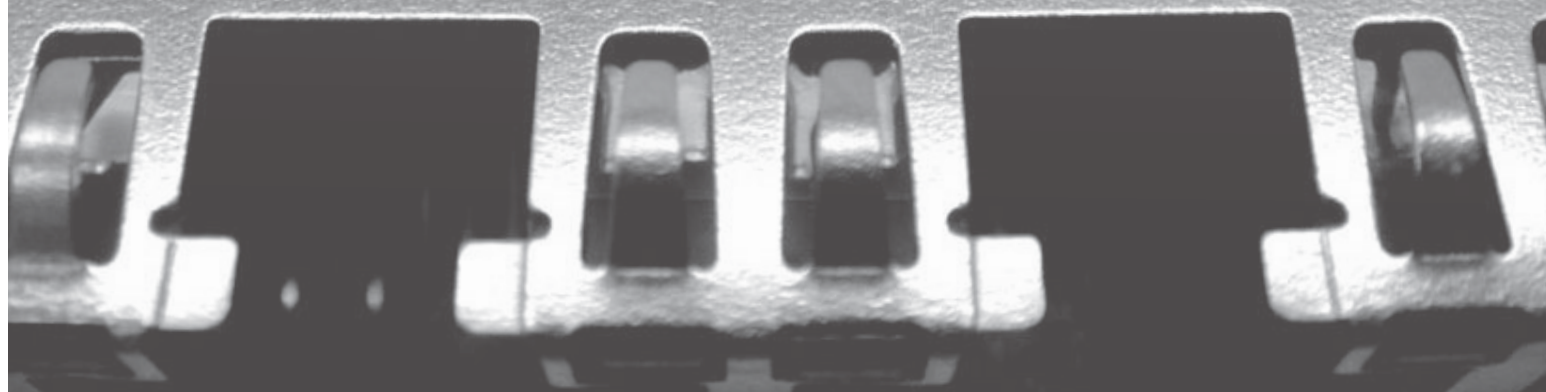


# ModularJacks



Amphenol



**Amphenol®**  
*Now you're connected!*

Amphenol Data/Telecom Products Group of **Amphenol Canada Corp.**, a subsidiary of Amphenol Corporation, is an *ISO 9001 certified* facility located in Toronto, Canada. Our activities are dedicated to the design, development and manufacturing of interconnect products intended for use in the data communications and telecommunications markets. Our expertise in understanding and supporting our customers' interconnect needs has earned Amphenol Canada a reputation of quality and excellence among the world's leading users of electronic components.

This modular jack catalogue represents some of our more popular products within this product category. Other product categories include, but not limited to: D-sub, Micro-Ribbon, USB, Headers and Sockets, CoolPower connectors, VHDCI, Capacitively Decoupled BNC, filtered connectors (D-sub and micro-ribbon), and rugged connectors (RJ, USB, D-sub, and bulkhead adaptors).

Can't find what you are looking for? For other modular jack products, modifications and customizations please contact us at [sales@amphenolcanada.com](mailto:sales@amphenolcanada.com).

Note: This catalogue is updated regularly. Please refer to the website for the most recent edition.

## Contents

### Right Angle (Side Entry)

EMI Quiet with LEDs	RJHS	3-6
Surface Mount with Light Pipes	RJSSE	7-9
1, 2, and 4 Port with LEDs	RJSBE	10-12
Filtered and Shielded	FRJAE	13-15
RJ45 Surface Mount with LEDs	RJCSE	16-17
Surface Mount Ultra Low Profile	RJLSE	18-19
RJ45 and RJ11 Standard Profile	RJESE	20-22
RJ11 (Six Position)	RJE01	23-24
Single Port High Profile	RJE02	25
Single Port Low Profile	RJE03	26-27
Ultra Low Profile	RJE05	28-29
Single Port Surface Mount	RJE07	30-31
Standard Profile	RJE09	32-34
Single Port Low Profile	RJE15	35-36
Recessed, Low Profile	RJULE	37-38
RJ45 Press Fit	RJE56	39-40
RJ45 with LEDs	RJE73	41-42

### Vertical (Top Entry)

EMI Quiet with LEDs	RJHS	3-6
Single Port Slim Profile	RJE06	43-44
Single Port Standard Profile	RJE08	45
Single Port Surface Mount	RJE23	46-47
Single Port	RJE74	48-49

### Stacked

2, 4, and 8 Ports with LEDs and Shield Options	RJSAE	50-52
4 Over 4 Ports with LEDs and Shield Options	RJSNE	53-54

### Category 5e

Right Angled, Recessed, Low Profile	RJE72	55-56
-------------------------------------	-------	-------

### Category 6

Right Angled, Recessed, Low Profile	RJE71	57-58
-------------------------------------	-------	-------

### Accessories

RJ45 Coupler	RJE17	59-60
RJ45 Dust Cover*	FRJ - 2411	
RJ11 Dust Cover*	FRJ - 2611	

**All of our modular jacks are RoHS compliant**

All drawings in this document are in inches [mm].

\* For more information on our dust covers please visit [www.amphenolcanada.com](http://www.amphenolcanada.com) or email [sales@amphenolcanada.com](mailto:sales@amphenolcanada.com)



# LED OPTIONS

LED OPTIONS FOR RJHS, RJCSE, RJSE, RJE71, RJE72, RJE73, RJSAE, RJSBE, AND RJSNE

## LED Designation

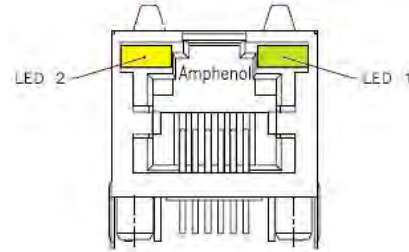
Ex. RJHSE - 538X\*

\* LED Designation Code

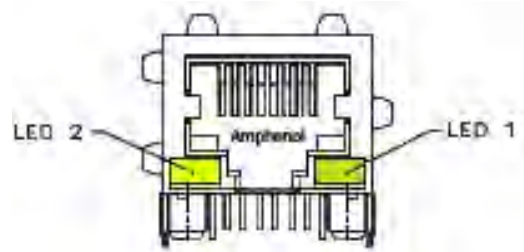
LED CODE	LED 2 Left	LED 1 Right
0	Blocked	Blocked
1	Yellow	Green
2	Blocked	Green
3	Yellow	Blocked
4	Green	Yellow
5	Green	Green
6	Yellow	Yellow
7	Red	Green
8	Green	Red
9	Green	Blocked
A	BiC GR/YE	BiC GR/YE
B	BiC RD/GR	BiC RD/GR
C	BiC RD/GR	BiC GR/YE
D	Green	BiC GR/YE
E	Yellow	BiC GR/YE
F	BiC GR/YE	Yellow
G	BiC GR/OR	BiC GR/OR
H	BiC GR/YE	Green
J	BiC RD/GR	Yellow
K	Yellow	BiC GR/OR
L	BiC GR/YE	Red
M	Red	Yellow
N	BiC GR/RD	BiC GR/YE
P	Green	BiC RD/GR
R	BiC GR/OR	Green
T	Red	Red
V	BiC RD/GR	Green

Note: A black X in the part number refers to the LED designation code for all drawings in this catalogue.

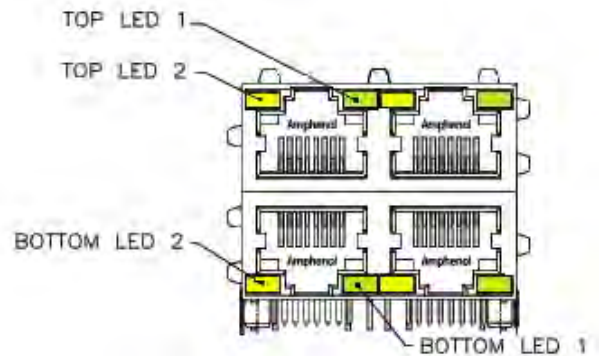
For RJHS, RJCSE, RJSE, RJE71, and RJE72:



For RJSBE and RJE73:



For Stacked Connectors:



Other LED options are available. If you do not see what you're looking for, please email [sales@amphenolcanada.com](mailto:sales@amphenolcanada.com) to request the complete LED ordering options.

# RJHS SERIES

EMI QUIET WITH LEDs

## EMI Quiet Modular Jack with LEDs

A series of EMI Quiet Modular Jack connectors with built-in LEDs. This product is ideal for LAN applications such as adapter cards and routers. Shielded and non-shielded versions are available, with a variety of LED colours and ports.



## Specifications

### Material

Insulator:	High temperature thermoplastic; complies with UL 94V-0. Colour: Black.
Contacts:	Phosphor bronze hard temper with gold thickness options (6µ", 15µ", 30µ", 50µ") over 50µ" minimum nickel on contact mating area. 100µ" minimum matte tin plating on soldering tail.
Shield:	Stainless steel with tin dipped tails
LED:	Tin plating on LED tail. Epoxy lens.

### Electrical

Contact Resistance:	20 mΩ maximum
Insulation Resistance:	500 MΩ minimum
Current Rating:	1.5 Amps
Voltage Rating:	125 Volts AC
DWV:	1000 VAC, 60 Hz. 1 minute

Standard LEDs: For 5.0 V Systems

Forward Voltage 2.1 Volts typical

Reverse Voltage	6 Volts minimum
Luminous Intensity:	0.5 mCd minimum (at If = 2mA)

**Low Current LEDs:** For 3.3 V Systems

Forward Voltage:	2 Volts typical
Reverse Voltage:	6 Volts minimum
Luminous Intensity:	1 mCd minimum (at If = 2mA)

### Mechanical

Mating Connector Insertion Force:	5 lbs. maximum
Mating Connector Pull Retention Force:	20 lbs. minimum
Durability:	750 mating & unmating cycles
Recommended Soldering Temperature:	Wave soldering peaked at 260°C for 5 seconds maximum

*Connectors without LEDs are suitable for IR reflow*

Operating Temperature: -55°C to + 85°C

UL File # : E135615

CSA File # : LR68598

## Ordering Information

RJHS X - X X X - XX

### Series Designation

E - Standard series  
P - PdNi contact plating

### Version

3 - Vertical mount, 8 position  
5 - Right angle, 8 position  
7 - Right angle, 6 position  
L - Right angle, low profile, 8 position

### Shield Options

0 - No shield  
3 - Standard shield  
4 - Single port shield similar to code 3 but with side ground tabs  
F - Shielded but with no top, side, or bottom tabs  
P - Shield with top & bottom tabs, for vertical mount connector

### Number of Ports

Blank - 1 port  
02 - 2 ports  
04 - 4 ports  
06 - 6 ports  
08 - 8 ports

### LED Designation

Please refer to page 2 for options

### Number of Contacts

4 - 4 contacts  
6 - 6 contacts  
8 - 8 contacts

Didn't find what you were looking for?

Please contact [sales@amphenolcanada.com](mailto:sales@amphenolcanada.com) and let us know what you need.

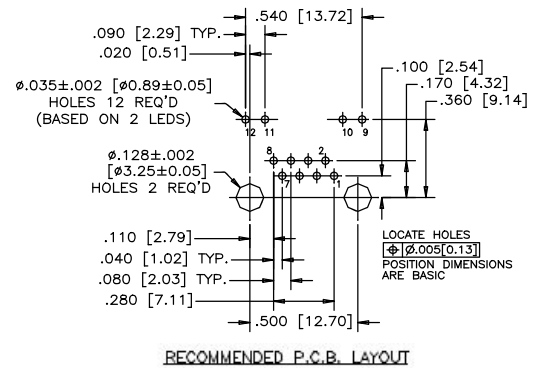
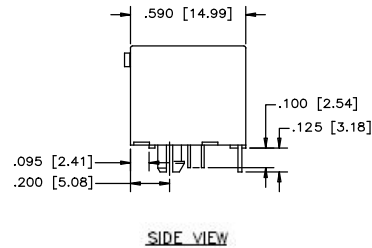
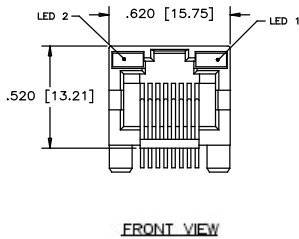


## EMI QUIET WITH LEDS

## Single Port

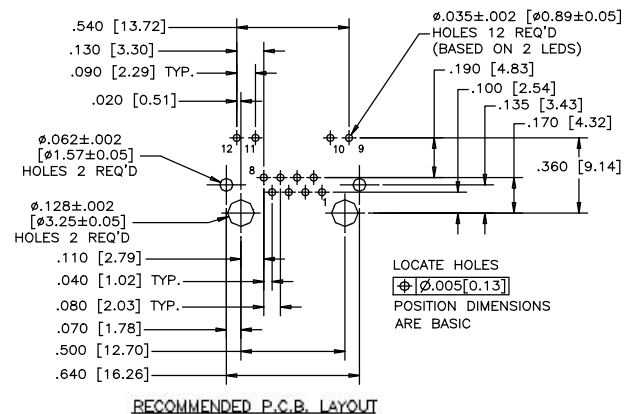
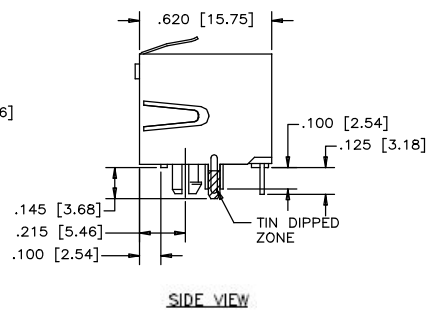
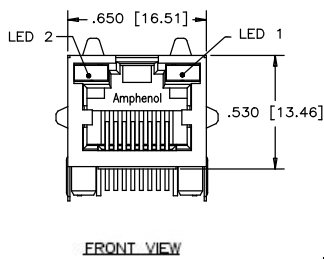
## Non-Shielded

RJHSE-508X



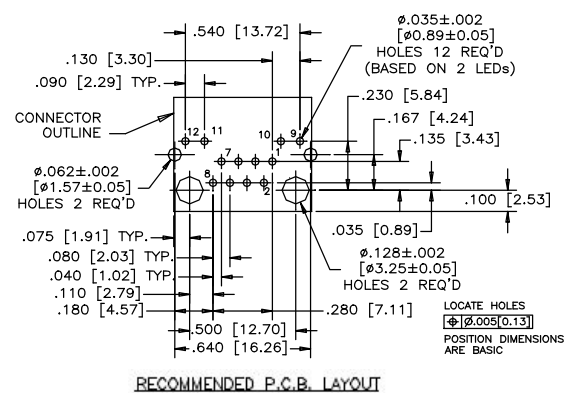
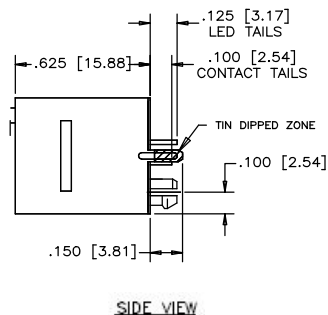
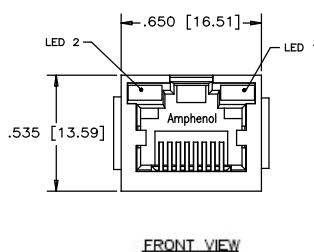
## RJHSE-548X

## Shielded - With Top & Side Ground Tabs



RJHSE-338X

## Vertical Mount



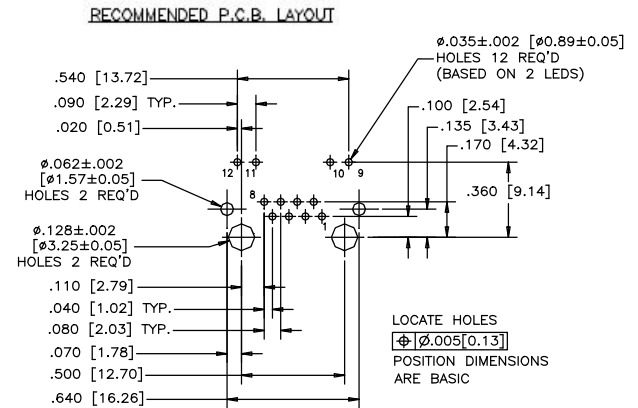
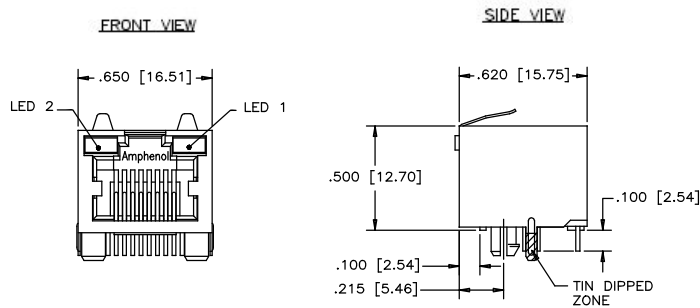
# RJHS SERIES

EMI QUIET WITH LEDS

## Single Port

RJHSE-L38X

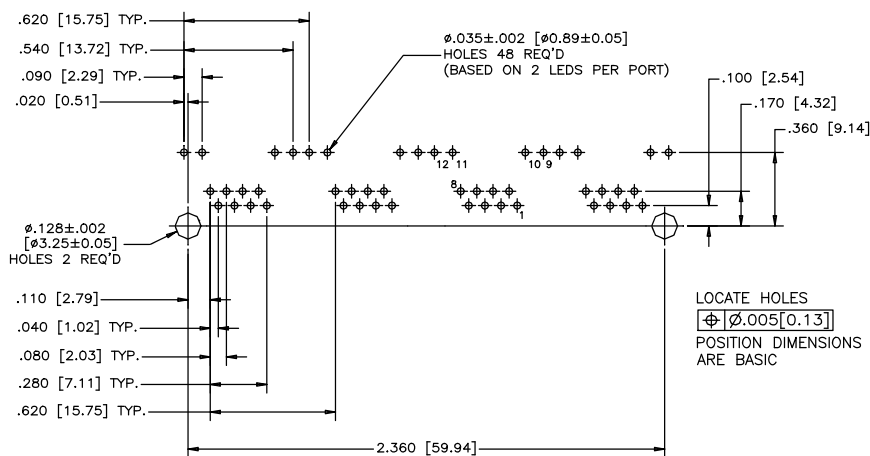
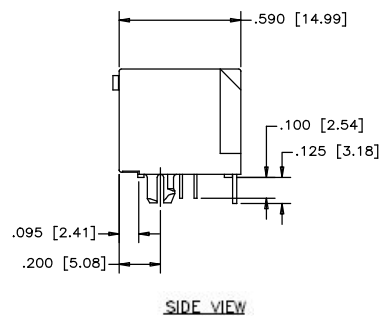
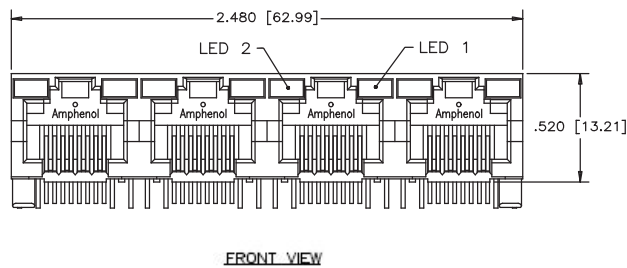
Shielded - Low Profile



## Multi Port

RJHSE-508X-04

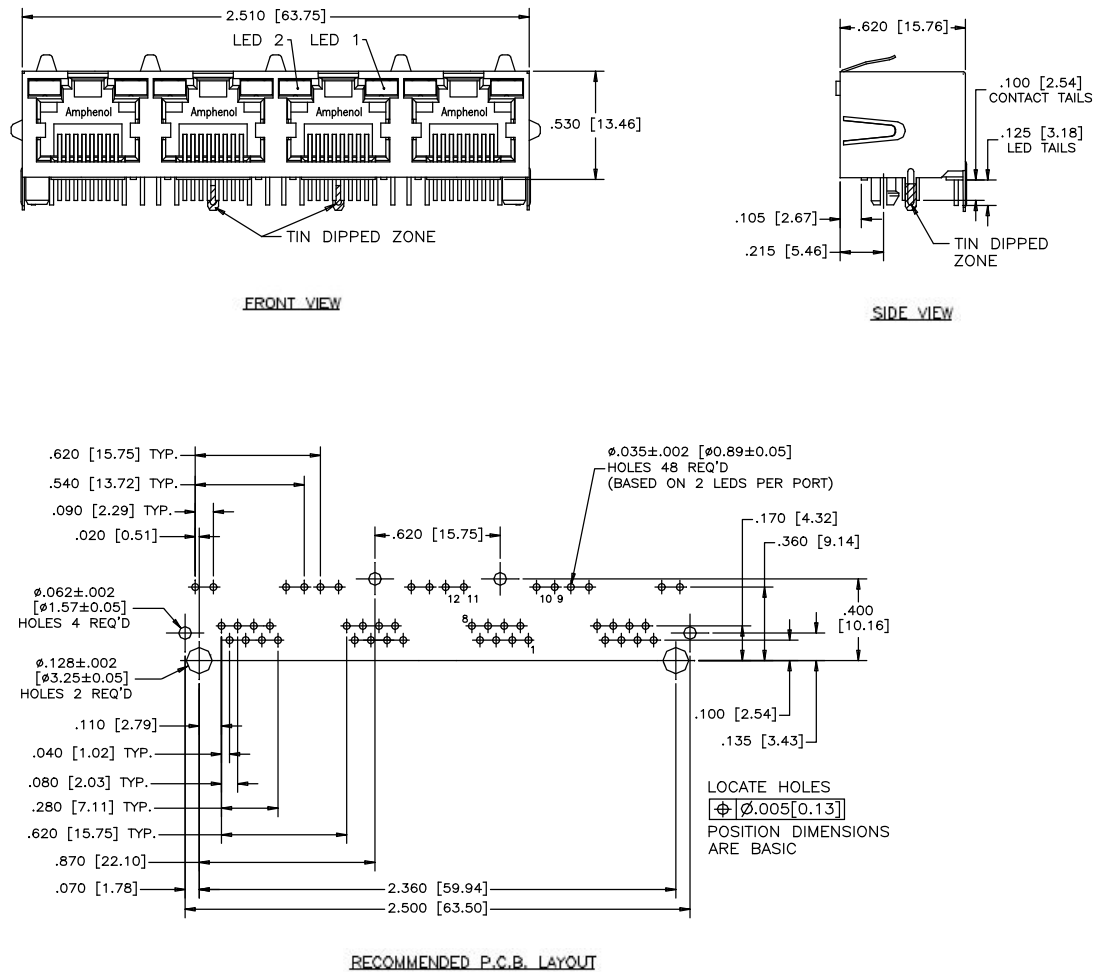
Non-Shielded



## Multi Port

RJHSE-538X-04

### Shielded



### Notes

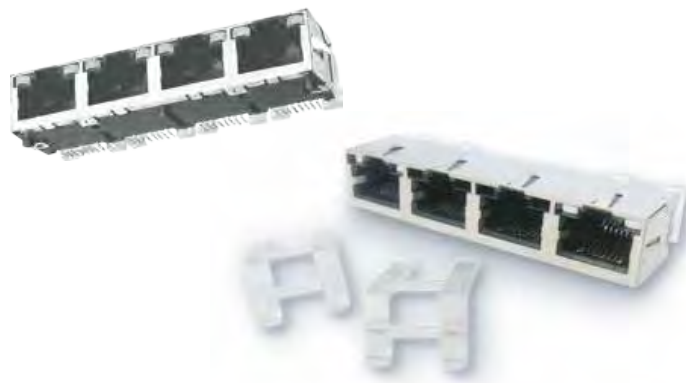
# RJSSE SERIES

SURFACE MOUNT WITH LIGHT PIPES

## Surface Mount with Light Pipes

Amphenol Canada's RJSSE series represents an expansion of our current RJHSE series connector. The RJSSE offers all the benefit of the RJHSE series in SMT with light pipes.

Shielded and unshielded versions are available with or without the light pipe option.



## Specifications

### Material

Insulator:	High temperature thermoplastic; complies with UL 94V-0. Colour: Black.
Contacts:	Phosphor bronze hard temper selective plated gold. Over 50µ" minimal nickel. 100µ" minimal matte-tin soldering tail.
Shield:	Copper alloy; nickel or matte tin plating
Light Pipe:	Optical grade polycarbonate; complies with UL 94V-0

Voltage Rating:	125 Volts AC
DWV:	1000 VAC, 60Hz. 1 minute

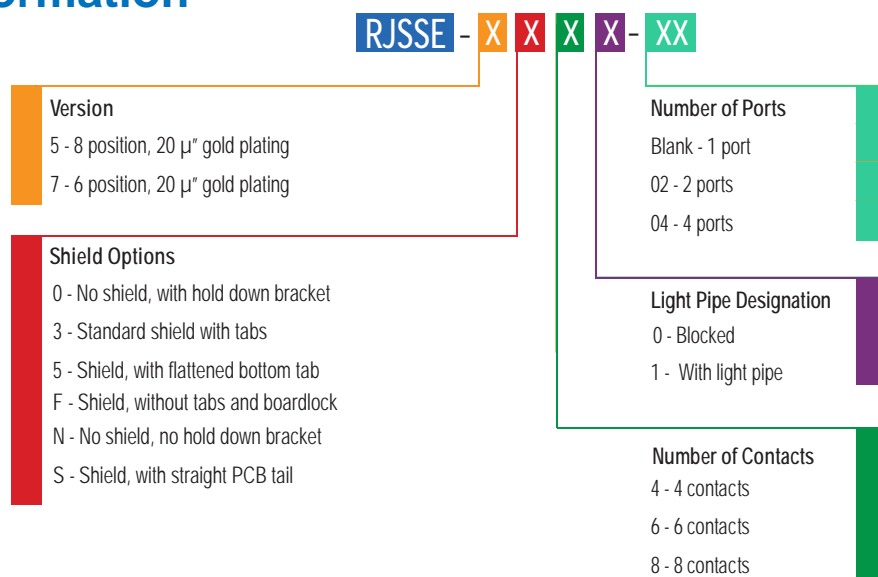
### Mechanical

Mating Connector Insertion Force:	5 lbs. maximum
Mating Connector Pull Retention Force:	20 lbs. minimum
Durability:	750 mating & unmating cycles
Recommended Soldering Temperature:	IR Relflow peaked at 260°C for 5 to 8 seconds <i>Light pipes to be installed after soldering</i>
Operating Temperature:	-40°C to +85°C
UL File # :	E135615

### Electrical

Contact Resistance:	20 mΩ maximum
Insulation Resistance:	500 MΩ minimum at 500V DC for 2 mins max.
Current Rating:	1.5 Amps

## Ordering Information



Didn't find what you were looking for?  
Please contact [sales@amphenolcanada.com](mailto:sales@amphenolcanada.com) and let us know what you need.



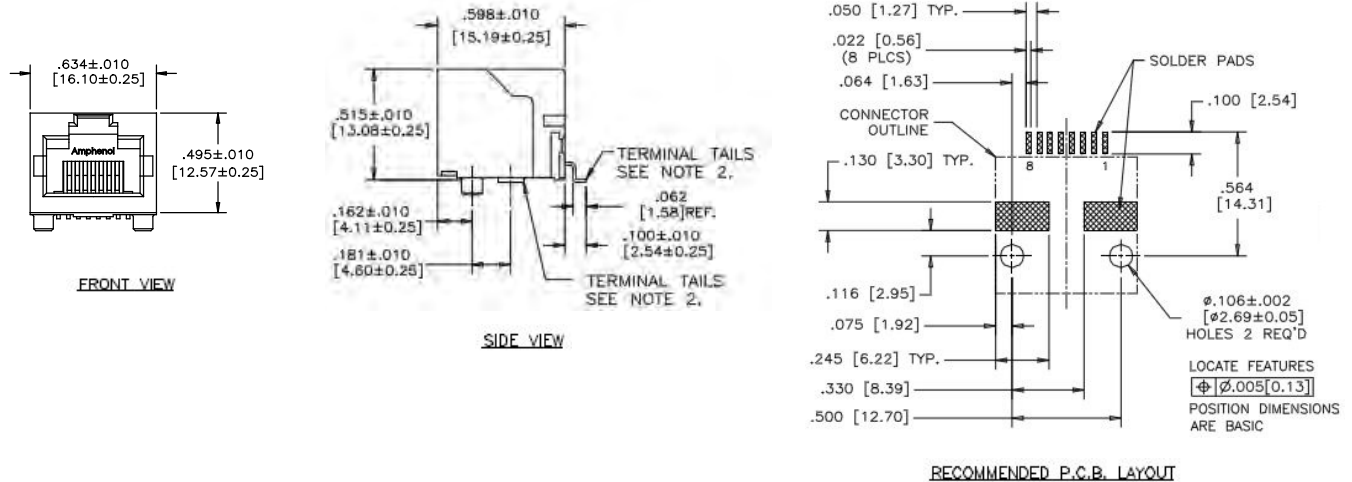
# RJSSE SERIES

SURFACE MOUNT WITH LIGHT PIPES

## Single Port

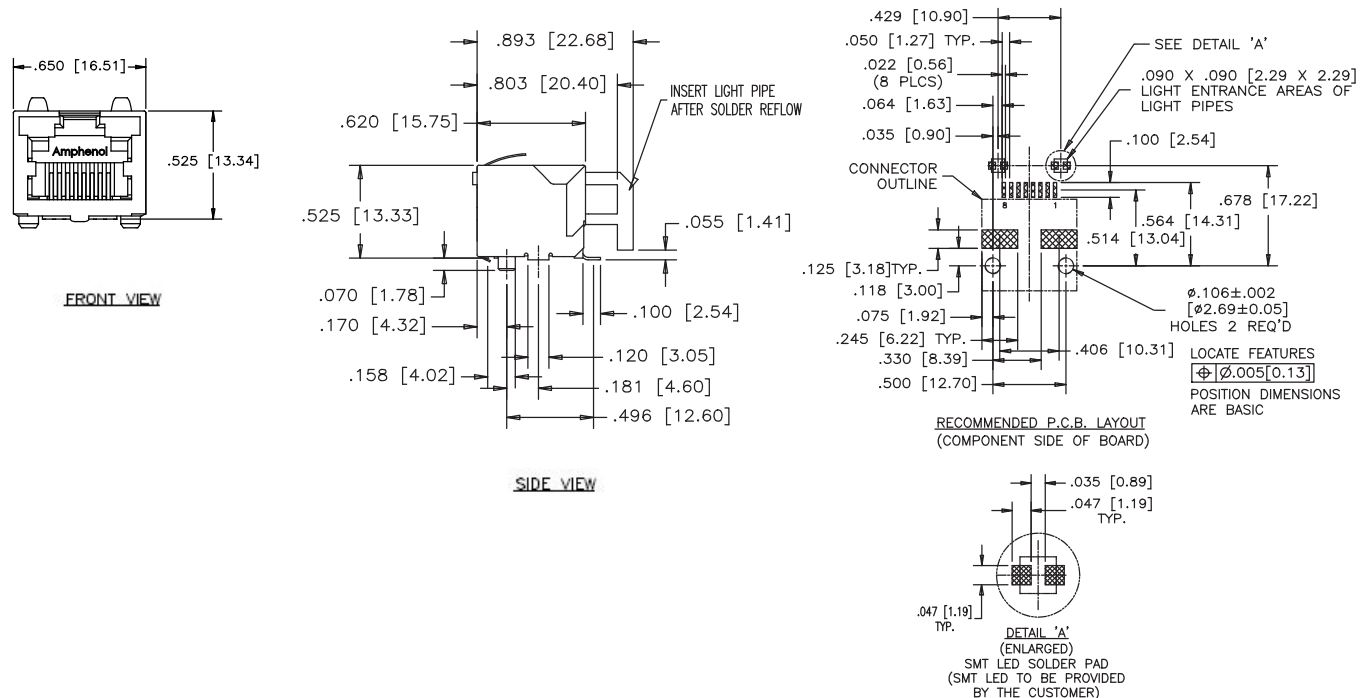
RJSSE-5080

### Non-Shielded



RJSSE-5381

### Shielded



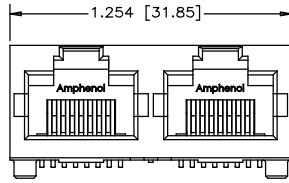
# RJSSE SERIES

SURFACE MOUNT WITH LIGHT PIPES

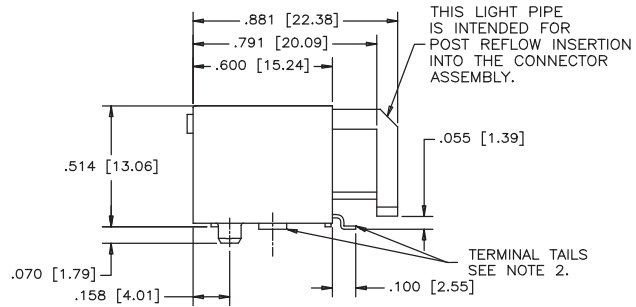
## Multi Port

### Non-Shielded

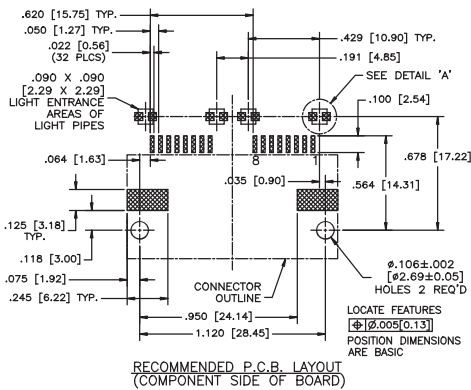
RJSSE-5081-02



FRONT VIEW



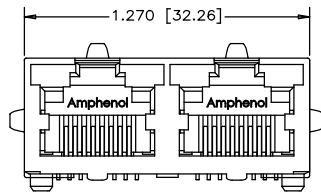
SIDE VIEW



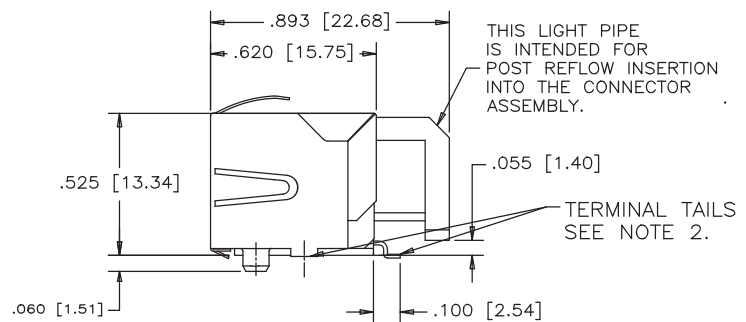
RECOMMENDED P.C.B. LAYOUT  
(COMPONENT SIDE OF BOARD)

### Shielded

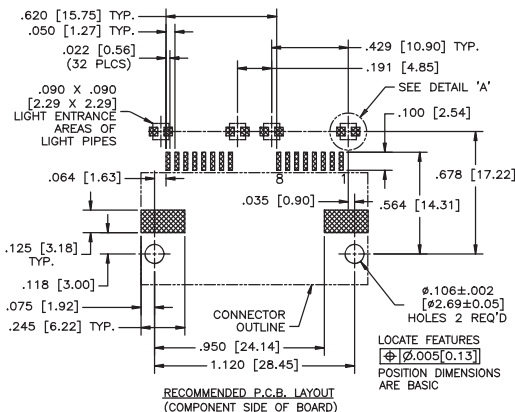
RJSSE-5381-02



FRONT VIEW



SIDE VIEW



RECOMMENDED P.C.B. LAYOUT  
(COMPONENT SIDE OF BOARD)

## 1, 2, and 4 Port with LEDs

The RJSBE series of Modular Jacks supports Ethernet Protocols. Shielding available with or without a ferrite filter for increased EMI performance and LEDs for link activity and network speed verification.



## Specifications

### Material

Insulator:	High temperature thermoplastic; complies with UL 94V-0. Colour: Black.
Contacts:	Phosphor bronze hard temper with gold thickness options (6µ", 15µ", 30µ", 50µ") over 50µ" minimum nickel on contact mating area. 100µ" minimum matte tin plating on soldering tail.
Shield:	Copper alloy; nickel plated with tin dipped tail
LED:	Tin plating on LED tail. Epoxy lens.

### Mechanical

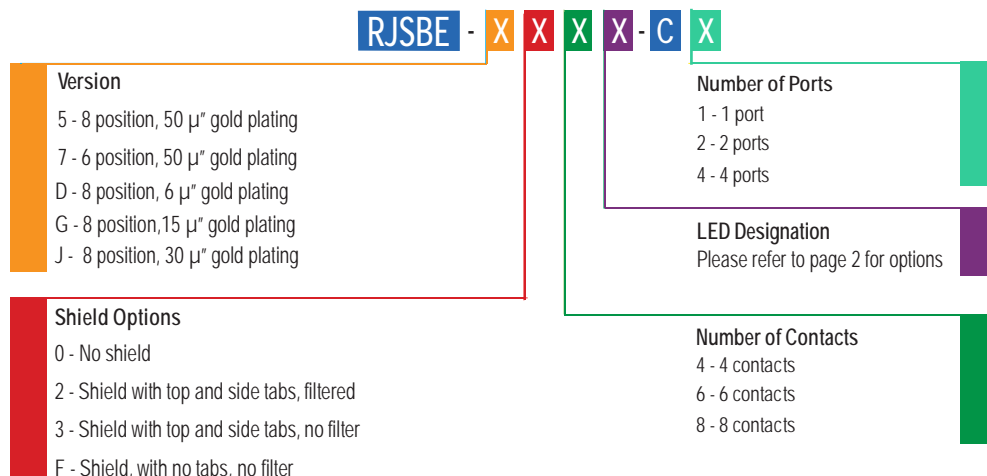
Mating Connector	
Insertion Force:	5 lbs. maximum
Mating Connector Pull	
Retention Force:	20 lbs. minimum
Durability:	750 mating & unmating cycles
Recommended Soldering	Wave soldering peaked at
Temperature:	260°C for 5 seconds maximum
	<i>Connectors without LEDs are suitable for IR reflow</i>

Operating Temperature: -55°C to +85°C

### Electrical

Contact Resistance:	20 mΩ maximum
Insulation Resistance:	500 MΩ minimum at 500V DC for 2 minutes maximum
Current Rating:	1.5 Amps
Voltage Rating:	125 Volts AC
DWV:	1000V DC, 60Hz. 1 minute
LED Forward DC Current:	20 mA typical
LED Forward Voltage:	1.9 Volts max. @ 2mA (for single colours) 2.6 Volts max. @ 20mA (for Bi-colours)
LED Reverse Voltage:	5 Volts minimum
LED Light Intensity:	0.4 to 1.5 mcd @ 2mA (for single colours) 0.4 mcd min. @ 2mA (for Bi-colours)
LED Wave Length:	Yellow: 587± 7 nm measured @ 20mA Green: 565± 6 nm measured @ 20mA Red: 625± 5 nm measured @ 20mA
UL File #	E135615
CSA File #	LR68598

## Ordering Information



Didn't find what you were looking for?  
Please contact [sales@amphenolcanada.com](mailto:sales@amphenolcanada.com) and let us know what you need.

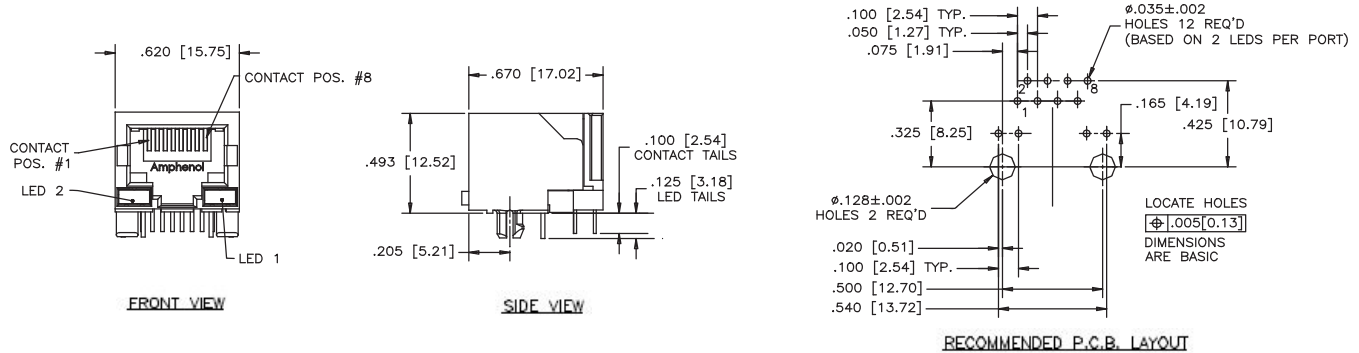
# RJSBE SERIES

1, 2, AND 4 PORT WITH LEDS

## Single Port

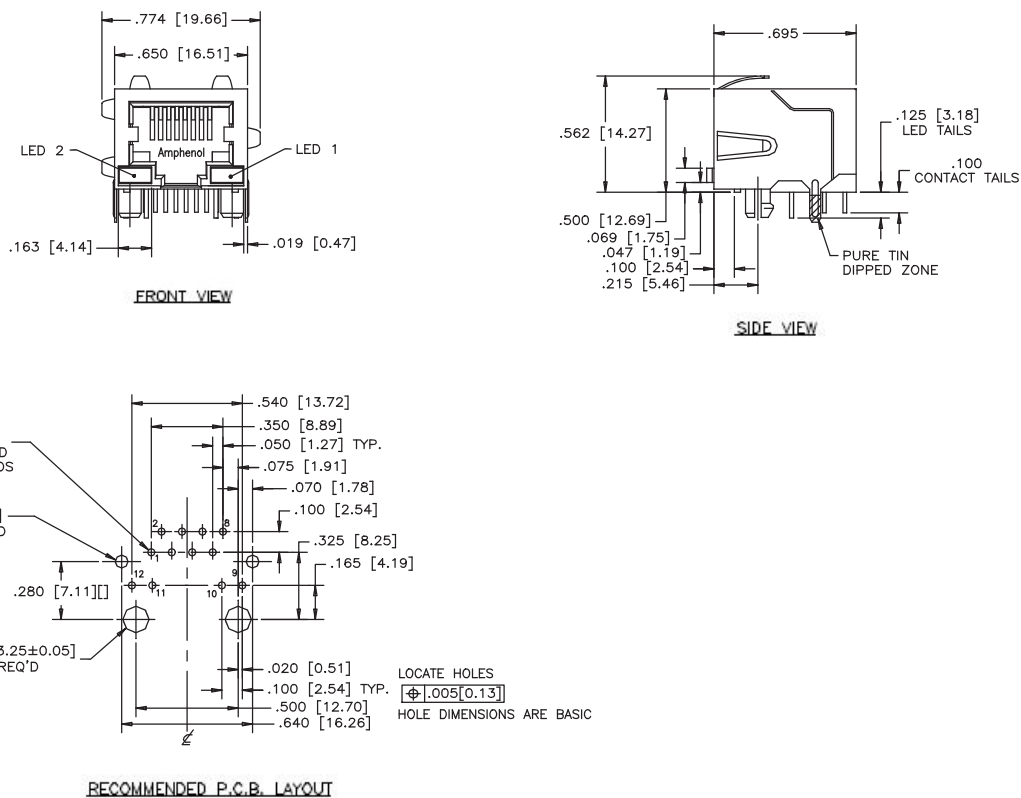
### Non-Shielded

RJSBE-508X-C1



### Shielded

RJSBE-538X-C1





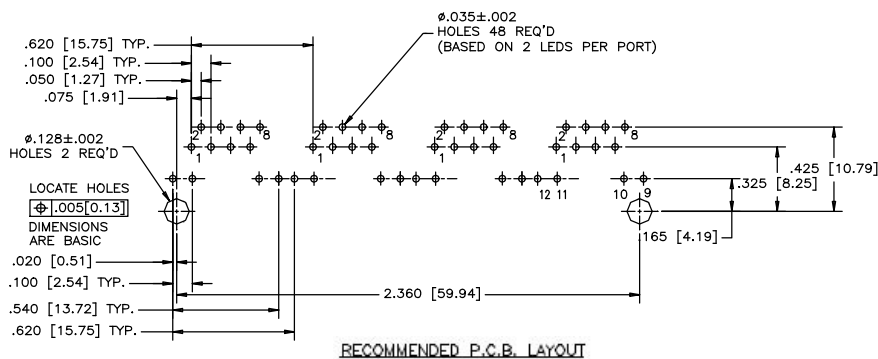
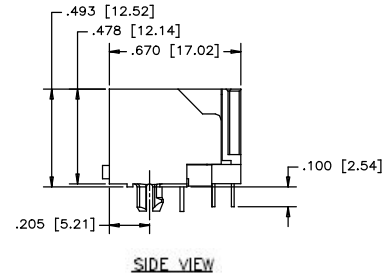
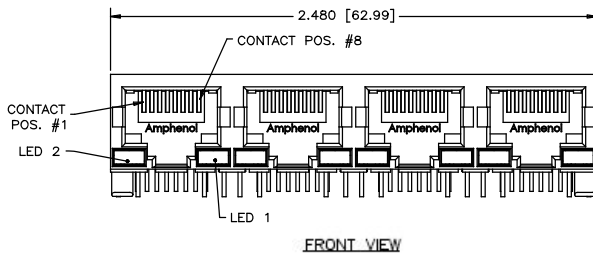
# RJSBE SERIES

1, 2, AND 4 PORT WITH LEDS

## Multi Port

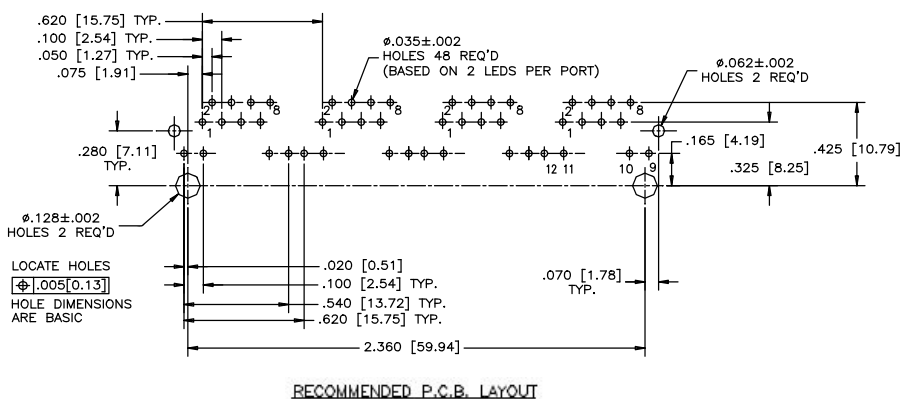
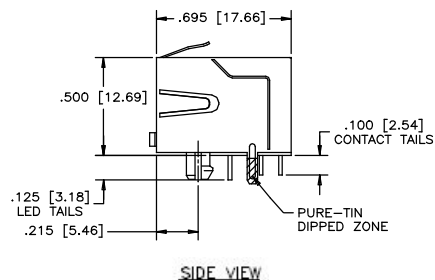
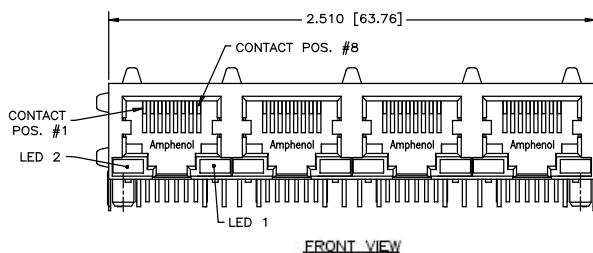
RJSBE-508X-C4

### Non-Shielded



### Shielded

RJSBE-538X-C4



# FRJ/FRJAE SERIES

FILTERED AND SHIELDED

## Filtered and Shielded

The FRJAE series of shielded and filtered Modular Jacks offer low cost and effective EMC control within standard RJ-11 and RJ-45 connector footprints. EMC control is offered by a completely shielded connector and/or with the use of a high resistivity, high impedance ferrite block. No board layout changes are required for its use. Simply replace the standard non-filtered connector for superior EMC performance.



## Specifications

### Material

Insulator:	High temperature thermoplastic; complies with UL 94V-0. Colour: Black.
Contacts:	Phosphor bronze hard temper with gold thickness options (6µ", 15µ", 30µ", 50µ") over 50µ" minimum nickel on contact mating area. 100µ" minimum matte tin plating on soldering tail.
Shield:	Copper alloy; nickel plated with tin dipped tail
Filter:	High impedance, high resistivity ferrite block

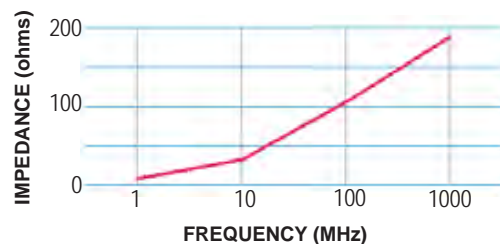
### Electrical

Contact Resistance:	20 mΩ maximum
Insulation Resistance:	500 MΩ minimum at 500V DC for 2 minutes maximum
Current Rating:	1.5 Amps
Voltage Rating:	125 Volts AC
DWV:	1000 VAC, 60 Hz. 1 minute

### Mechanical

Mating Connector Insertion Force:	5 lbs. maximum
Mating Connector Pull Retention Force:	20 lbs. minimum
Durability:	750 mating & unmating cycles
Recommended Soldering Temperature:	IR Reflow peaked at 260°C for 5 to 8 seconds <i>IR reflow not recommended for connectors with LEDs</i>
Operating Temperature:	-40°C to +70°C
UL File # :	E135615
CSA File # :	LR68598

### Impedance Characteristics



## Ordering Information

FRJAE - X X X - XX	
Version	Number of Ports
4 - 8 position	Blank - 1 port
6 - 6 position	02 - 2 ports
	03 - 3 ports
	04 - 4 ports
	06 - 6 ports
	08 - 8 ports
Options	Number of Contacts
0 - Non-filtered, non shielded	2 - 2 contacts
1 - Filtered with front tab shield	4 - 4 contacts
3 - Shield with front tab	6 - 6 contacts
4 - Filtered	8 - 8 contacts
6 - Filtered with rear tab shield	
7 - Filtered with non-tab shield	
8 - Shield with rear tab	

Didn't find what you were looking for?

Please contact [sales@amphenolcanada.com](mailto:sales@amphenolcanada.com) and let us know what you need.

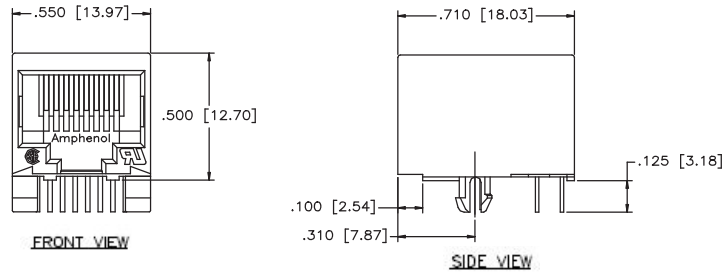
# FRJ/FRJAE SERIES

FILTERED AND SHIELDED

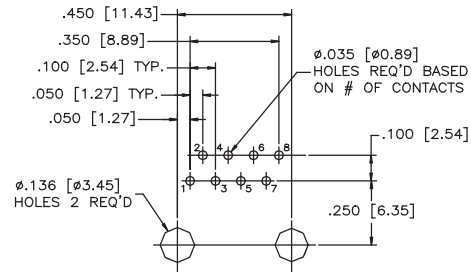
## Single Port

FRJAE-408

### Non-Shielded

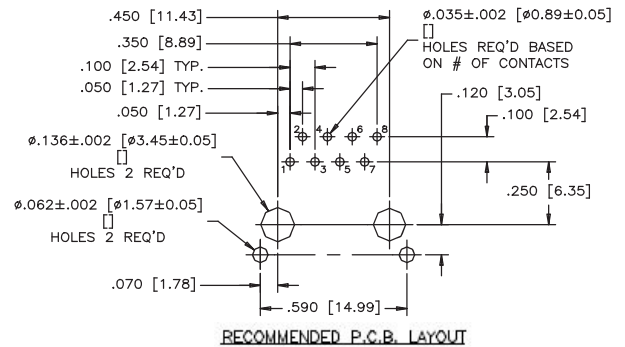
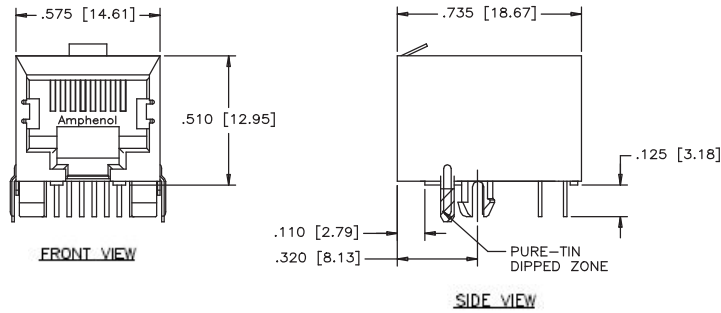


#### RECOMMENDED P.C.B. LAYOUT



### Shielded

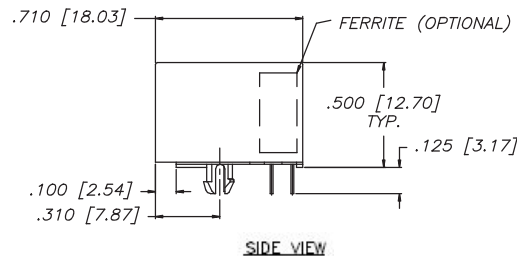
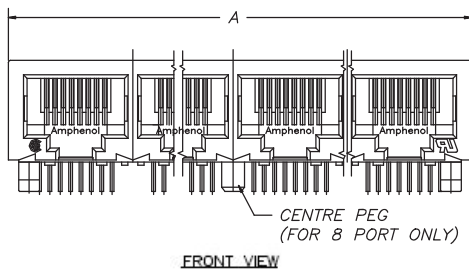
FRJAE-438



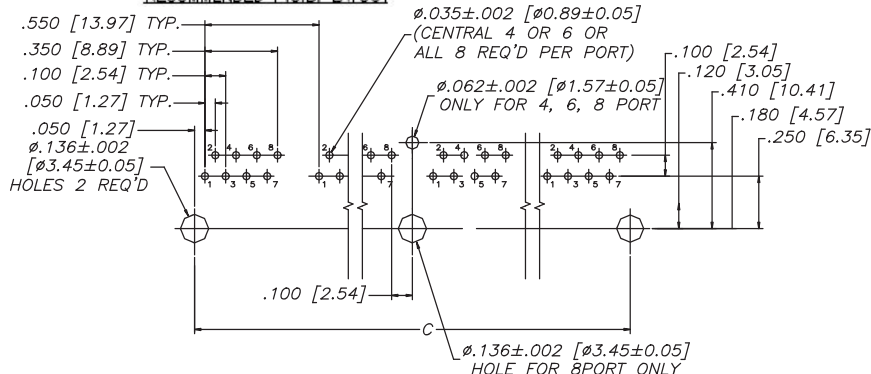
## Multi Port

FRJAE-4X8-0X

### Non-Shielded



#### RECOMMENDED P.C.B. LAYOUT



Number of ports	A	C
2	1.200 [30.48]	1.000 [25.40]
4	2.300 [58.42]	2.100 [53.34]
6	3.400 [86.36]	3.200 [81.28]
8	4.500 [114.30]	4.300 [109.22]

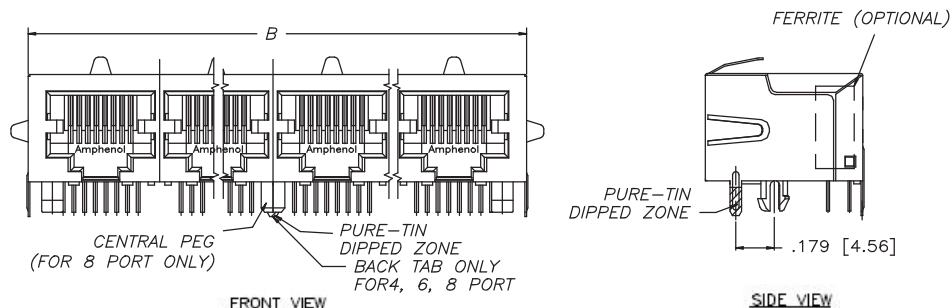
# FRJ/FRJAE SERIES

FILTERED AND SHIELDED

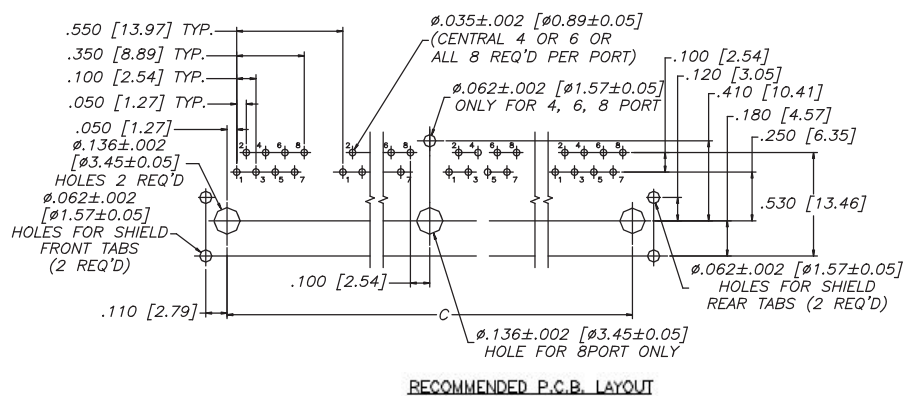
## Multi Port

### Shielded

FRJAE-418-0X



Number of ports	B	C
2	1.230 [31.24]	1.000 [25.40]
4	2.330 [59.18]	2.100 [53.34]
6	3.430 [87.12]	3.200 [81.28]
8	4.530 [115.06]	4.300 [109.22]



## Notes



## RJ45 Surface Mount with LEDs

The RJCSE is a right angle surface mount connector with built-in LEDs, available with or without shielding. Shielding available for increased EMI performance and built-in LEDs for link activity and network verification. This product is ideal for LAN applications such as adapter cards and routers.



## Specifications

### Material

Insulator:	High temperature thermoplastic; complies with UL 94V-0. Colour: Black.
Contacts:	Phosphor bronze hard temper with gold thickness options (15µ", 50µ") over 50µ" minimum nickel on contact mating area. Gold flash over nickel on soldering tail.
Shield:	Copper alloy with nickel plating
LED:	Tin plating on LED tail. Epoxy lens.

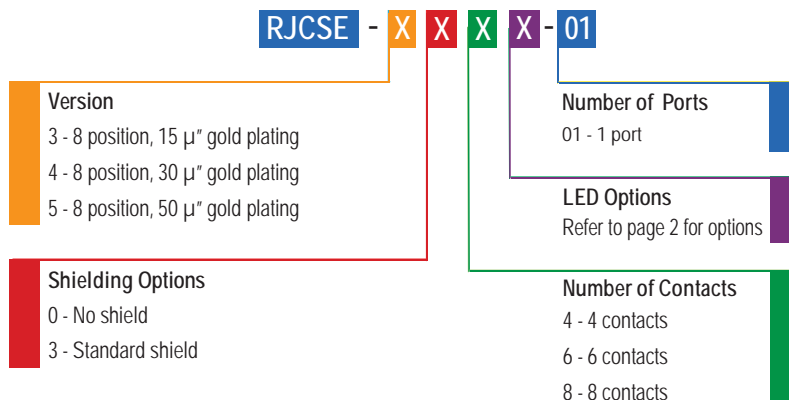
### Mechanical

Mating Connector	
Insertion Force:	5 lbs. maximum
Mating Connector Pull	
Retention Force:	20 lbs. minimum
Durability:	750 mating & unmating cycles (for 50µ" gold plating option)
Operating Temperature:	-40° C to +70° C

### Electrical

Contact Resistance:	20 mΩ maximum
Insulation Resistance:	500 MΩ minimum at 500V DC for 2 minutes maximum
Current Rating:	1.5 Amps
Voltage Rating:	125 Volts AC
DWV:	1000 VAC, 60 Hz. 1 minute
LED Forward DC Current:	20mA typical
LED Forward Voltage:	1.9 Volts maximum @ 2mA (for single colours) 2.6 Volts maximum @ 20mA (for Bi-colours)
LED Reverse Voltage:	5 Volts minimum
LED Light Intensity:	0.4 to 1.5 mcd @ 2mA (for single colours) 0.5 mcd minimum @ 2mA (for Bi-colours)
LED Wave Length:	Yellow: 587 ± 7 nm measured @ 20mA Green: 565 ± 6 nm measured @ 20mA Red: 625 ± 5 nm measured @ 20mA

## Ordering Information



Didn't find what you were looking for?  
Please contact [sales@amphenolcanada.com](mailto:sales@amphenolcanada.com) and let us know what you need.

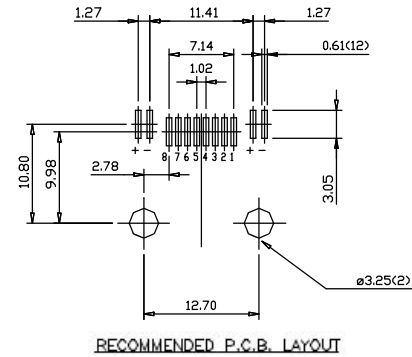
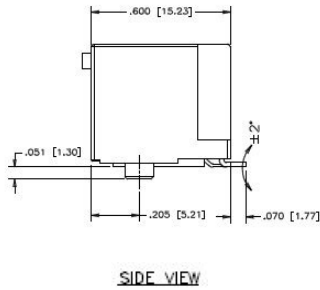
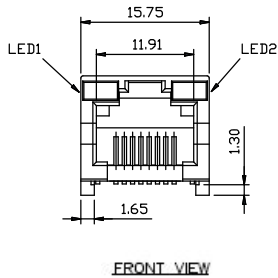
# RJCSE SERIES

RJ45 SURFACE MOUNT WITH LEDS

## Single Port

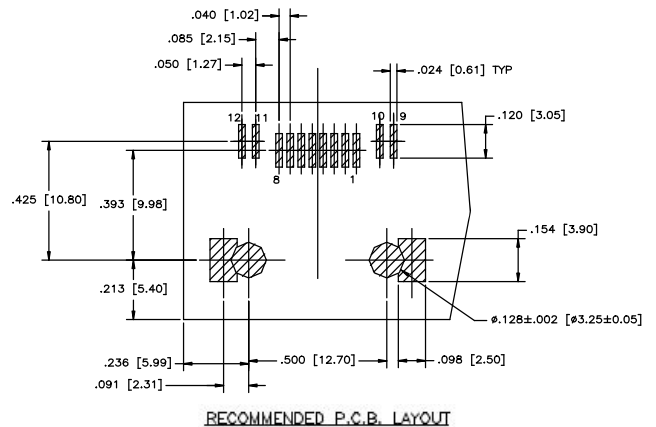
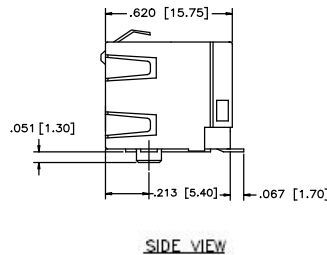
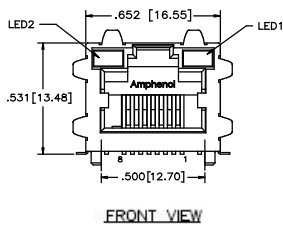
### Non-Shielded

RJCSE-508X-01



### Shielded

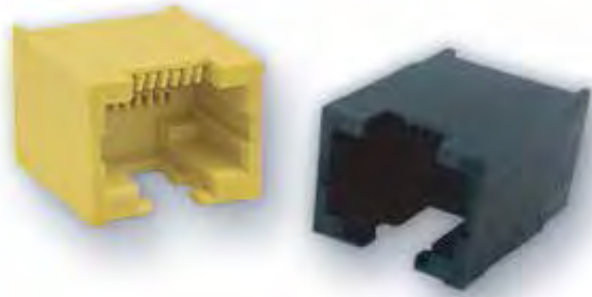
RJCSE-538X-01



## Notes

## Surface Mount Ultra Low Profile

The RJLSE series are surface mount Modular Jacks with superior EMI performance that support Ethernet Protocols. This low profile connector is built to meet your high volume RJ requirements. This series is a true pick and place compatible SMT connector and is available with different shielding, number of contacts, gold plating thickness, and colour options. Built with high temperature engineering thermoplastic and suitable for IR Reflow solder process.



## Specifications

### Material

Insulator:	High temperature engineering thermoplastic; flammability rating UL 94V-0. Available in black, yellow, and red.
Contacts:	Phosphor bronze
Plating:	Gold plating on mating surfaces over 50µ" (1.27 microns) minimum nickel underplate. 100µ" (2.54 microns) minimum matte tin on contact tails.
Shield:	Copper alloy; nickel or matte tin plated
Coplanarity:	The maximum gap between all terminal tails is .004" (0.10 mm)

### Mechanical

Mating Connector Insertion Force:	5 lbs. maximum
-----------------------------------	----------------

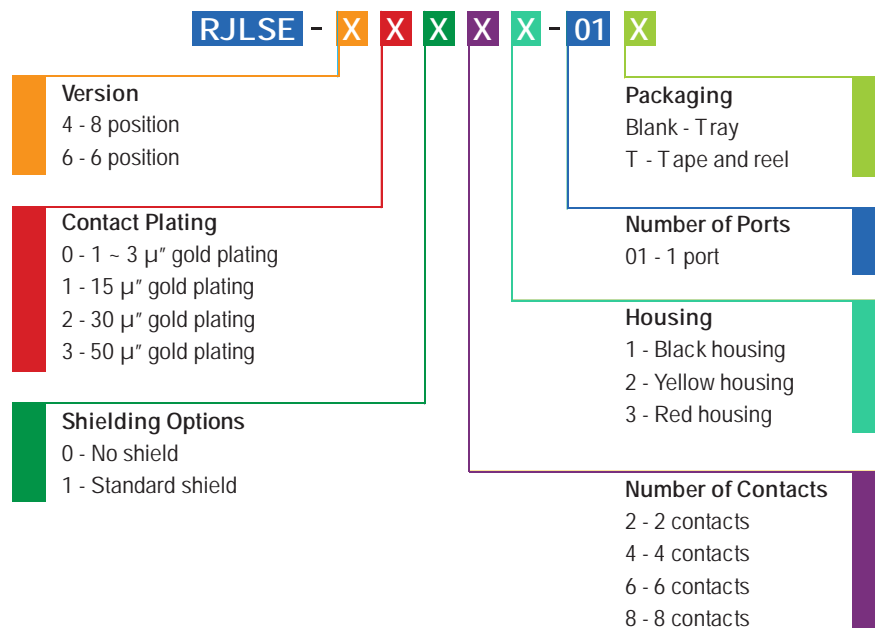
### Mating Connector Pull

Retention Force:	20 lbs. minimum
Durability:	750 mating & unmating cycles
Recommended Soldering Temperature:	IR Reflow peaked at 260°C for 5 to 8 seconds
Operating Temperature:	-40°C to +70°C

### Electrical

Contact Resistance:	20 mΩ maximum
Insulation Resistance:	500 MΩ minimum at 500V DC for 2 mins max.
Current Rating:	1.5 Amps
Voltage Rating:	125 Volts AC
DWV:	1000 VAC, 60Hz. 1 minute
UL File #	E135615
CSA File #	LR68598

## Ordering Information



Didn't find what you were looking for?

Please contact [sales@amphenolcanada.com](mailto:sales@amphenolcanada.com) and let us know what you need.

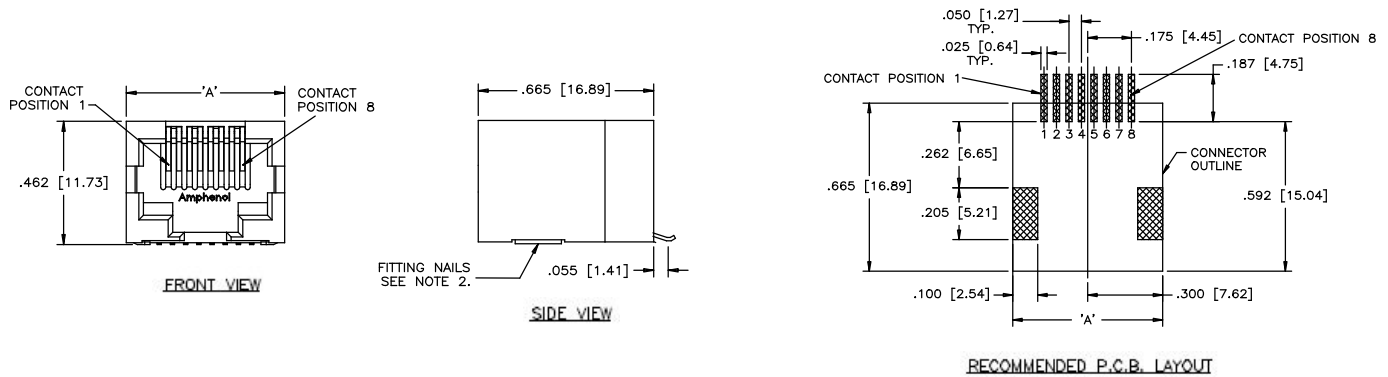
# RJLSE SERIES

SURFACE MOUNT ULTRA LOW PROFILE

## Single Port

RJLSE-X30X1-01

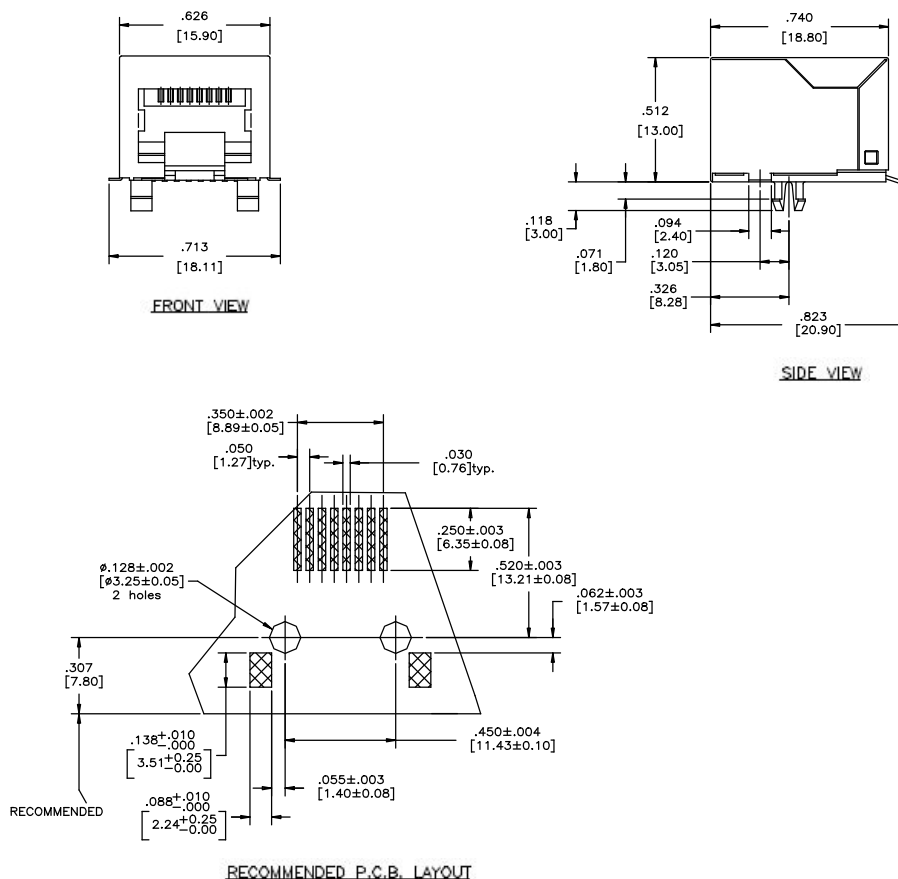
### Non-Shielded



NO. OF POSITIONS	DIMENSIONS
	'A'
6	.520 [13.21]
8	.600 [15.24]

### Shielded

RJLSE-43181-01





## RJ45 and RJ11 Standard Profile

This family of EMI Quiet Modular Jack connectors with integrated LEDs features the same data transfer capabilities as our existing series of LED-integrated Modular Jacks. This product is an economical solution ideal for LAN applications and is intended for use with low temperature soldering processes. Shielded and non-shielded versions are available with a variety of LED options to choose from. RJESE is offered in both single and multi-port configurations.



## Specifications

### Material

Insulator:	Engineering thermoplastic. Complies with UL 94V-0. Colour: Black.
Contacts:	Phosphor hard temper with gold thickness options (6µ", 15µ", 30µ", 50µ") over 50µ" minimum nickel on contact mating area. 100µ" minimum matte tin plating on soldering tail
Shield:	Stainless steel with tin dipped tails
LED:	Tin plating on LED tails

LED Forward Voltage:	1.9 Volts max. @ 2mA (for single colours) 2.6 Volts max. @ 20mA (for bi-colours)
LED Reverse Voltage:	5 Volts minimum
LED Light Intensity:	0.4 to 1.5 mcd @ 2mA (for single colours) 0.5 mcd minimum @ 2mA (for bi-colours)
LED Wave Length:	Yellow: 587 ± 7 nm measured @ 20mA Green: 565 ± 6 nm measured @ 20mA Red: 625 ± 5 nm measured @ 20mA

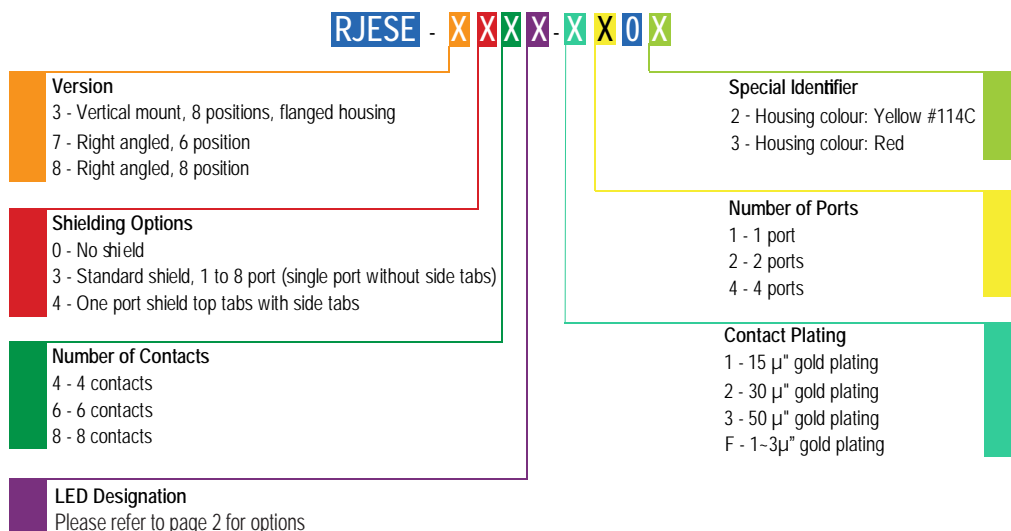
### Electrical

Contact Resistance:	20 mΩ maximum
Insulation Resistance:	500 MΩ minimum at 500V DC for 2 mins max.
Current Rating:	1.5 Amps
Voltage Rating:	125 Volts AC
DWV:	1000 VAC, 60Hz. 1 minute
LED Forward DC Current:	20mA typical

### Mechanical

Mating Connector Insertion Force:	5 lbs. maximum
Mating Connector Pull Retention Force:	20 lbs. minimum
Durability:	750 mating & unmating cycles
Recommended Soldering Temperature:	Wave soldering peaked at 260°C for 5 seconds maximum
Operating Temperature:	-40°C to +70°C

## Ordering Information



Didn't find what you were looking for?  
Please contact [sales@amphenolcanada.com](mailto:sales@amphenolcanada.com) and let us know what you need.

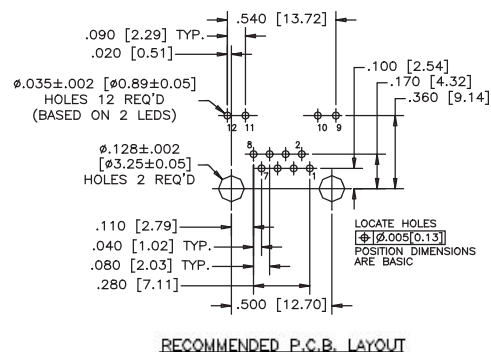
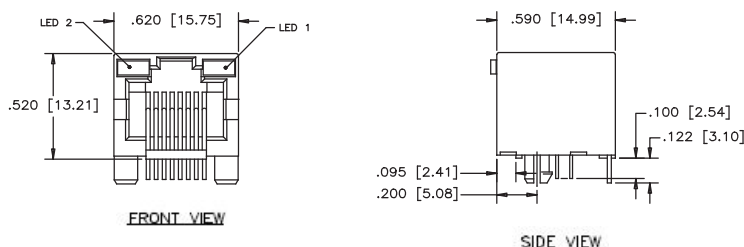
# RJESE SERIES

RJ45 AND RJ11 STANDARD PROFILE

## Single Port

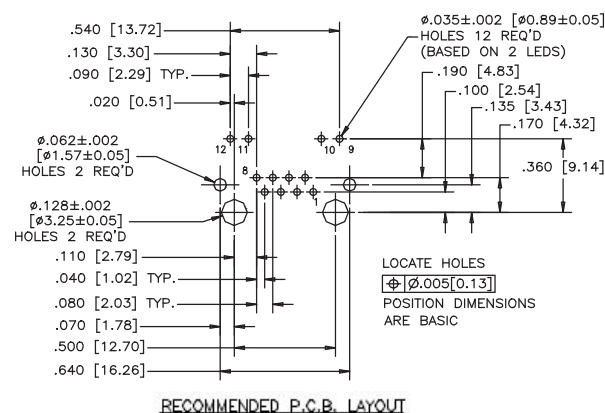
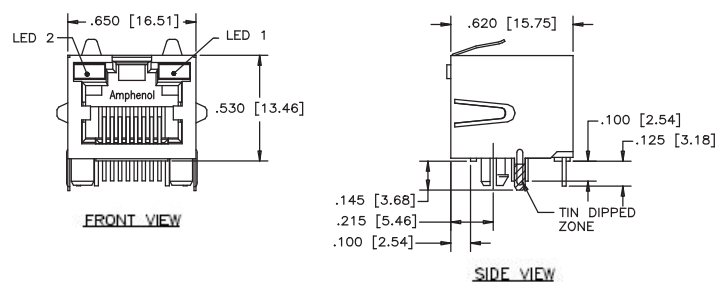
### Non-Shielded

RJESE-808X-01



### Shielded

RJESE-848X-01



### Notes

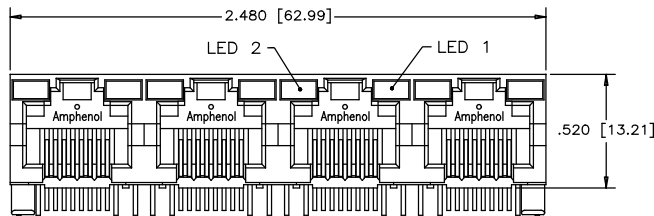
# RJESE SERIES

RJ45 AND RJ11 STANDARD PROFILE

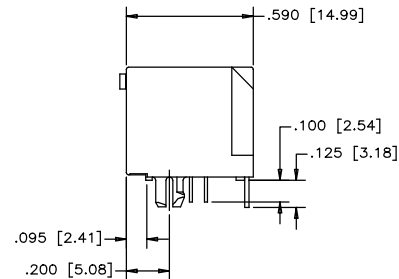
## Multi Port

### Non-Shielded

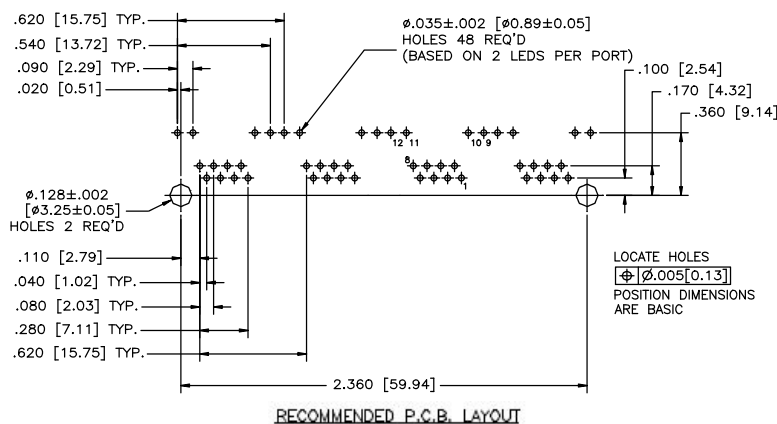
RJESE-808X-04



FRONT VIEW



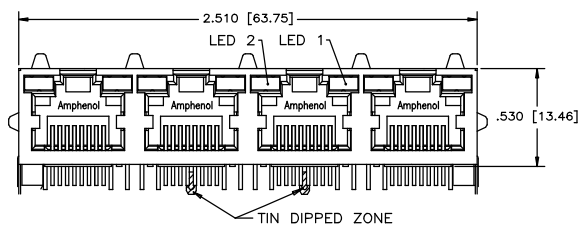
SIDE VIEW



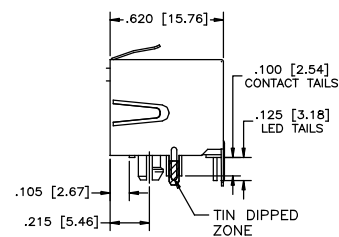
RECOMMENDED P.C.B. LAYOUT

### Shielded

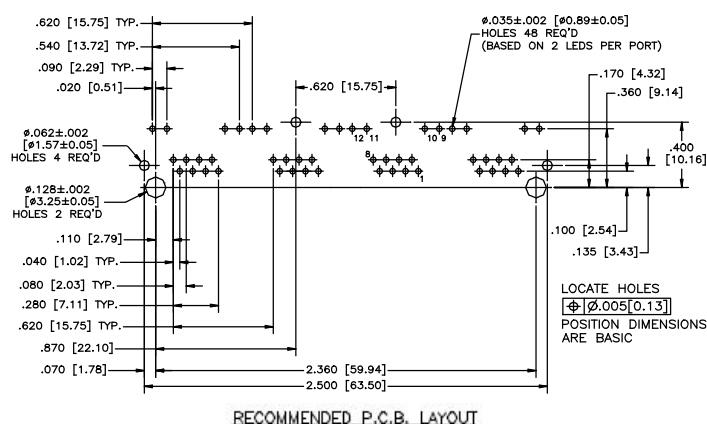
RJESE-838X-04



FRONT VIEW



SIDE VIEW



RECOMMENDED P.C.B. LAYOUT

# RJE01 SERIES

RJ11 (SIX POSITION)

## RJ11 (Six Position)

The RJE01 series of 6-position jacks are designed for superior EMI performance. The inverted connector provides shorter leads, eliminating the EMI antenna effect of the standard connector footprint. Typical performance improvement over their standard connector counterparts is 5-10 dB over the frequency range.



## Specifications

### Material

Insulator:	High temperature thermoplastic. Complies with UL 94V-0. Colour: Black.
Contacts:	Phosphor bronze hard temper with gold thickness options (6 $\mu$ ", 15 $\mu$ ", 30 $\mu$ ", 50 $\mu$ ") over minimum nickel on contact mating area. 100 $\mu$ " minimum matte tin plating on soldering tail.
Shield:	Stainless steel with tin dipped tails

### Electrical

Contact Resistance:	20 m $\Omega$ maximum
Insulation Resistance:	500 M $\Omega$ minimum at 500V DC for 2 mins max.
Current Rating:	1.5 Amps

### Voltage Rating:

DWV: 125 Volts AC

### UL File # :

E135615

### CSA File # :

LR68598

### Mechanical

#### Mating Connector Insertion Force:

5 lbs. maximum

#### Mating Connector Pull Retention Force:

20 lbs. minimum

#### Durability:

750 mating & unmating cycles

#### Recommended Soldering Temperature:

IR Reflow peaked at 260°C for 5 to 8 seconds

#### Operating Temperature:

-55°C to +85°C

## Ordering Information

RJE01 - X X X - XX	
<b>Contact Plating</b> 1 - 6 $\mu$ " gold plating 6 - 50 $\mu$ " gold plating G - 15 $\mu$ " gold plating J - 30 $\mu$ " gold plating	<b>Number of Ports</b> 01 - 1 port 02 - 2 ports
<b>Number of Contacts</b> 2 - 2 contacts 4 - 4 contacts 6 - 6 contacts	<b>Shielding Options</b> 0 - No shield 1 - Front/rear tab captions for single port 2 - Shielded with tabs and PCB tails 4 - Shielded without tabs, and without PCB tails 5 - Shielded without tabs, but with shield PCB tails

Didn't find what you were looking for?

Please contact [sales@amphenolcanada.com](mailto:sales@amphenolcanada.com) and let us know what you need.

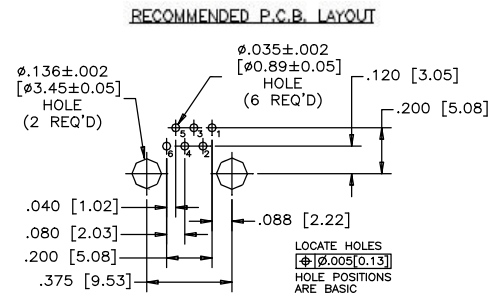
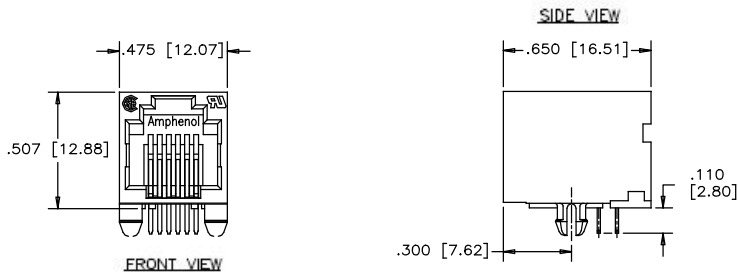
# RJE01 SERIES

RJ11 (SIX POSITION)

## Single Port

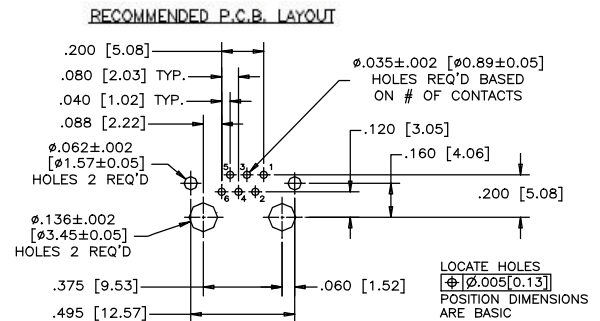
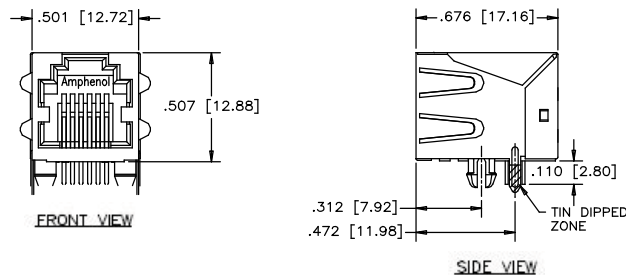
RJE01-660-01

### Non-Shielded



### Shielded

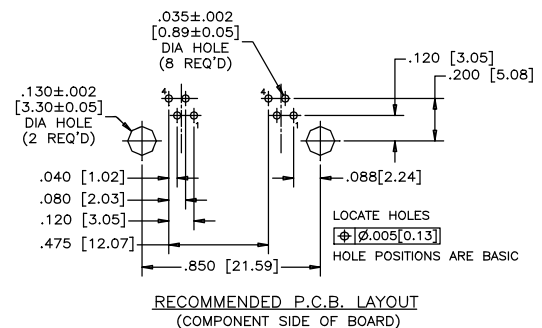
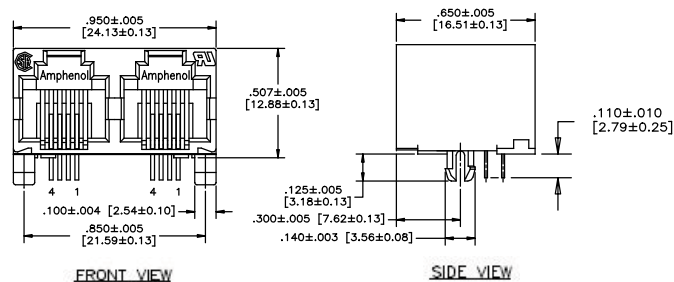
RJE01-662-01



## Multi Port

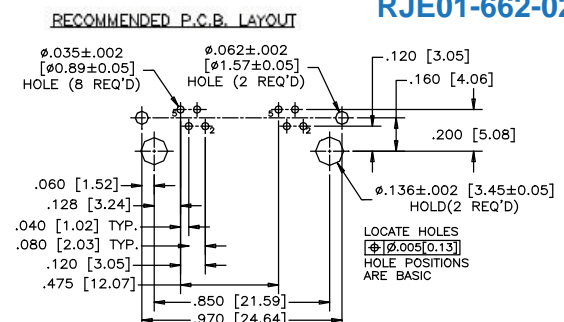
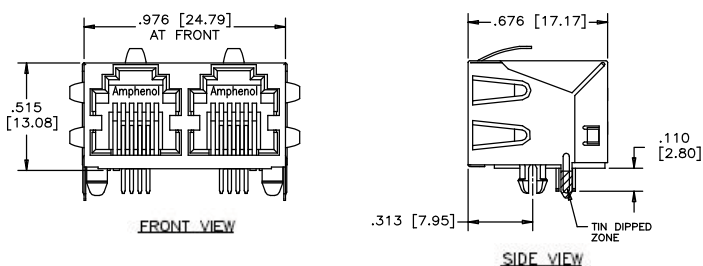
RJE01-660-02

### Non-Shielded



### Shielded

RJE01-662-02

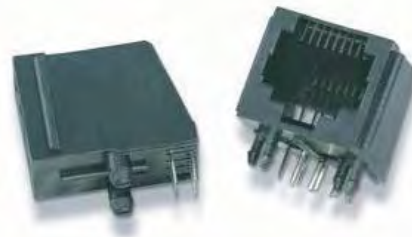


# RJE02 SERIES

SINGLE PORT HIGH PROFILE

## Single Port High Profile

RJE02 series is a group of products within a family of standard Modular Jacks designed to meet requirements for a variety of applications. Options within the RJE02 family include flanged or without flange, and RJ11 & RJ45 configurations.



## Specifications

### Material

Insulator: Engineering thermoplastic. Complies with UL 94V-0.  
Colour: Black.

Contacts: Phosphor bronze hard temper with gold thickness options (6µ", 15µ", 30µ", 50µ") over 50µ" minimum nickel on contact mating area. 100µ" minimum matte tin plating on soldering tail.

### Electrical

Contact Resistance: 20 mΩ maximum  
Insulation Resistance: 500 MΩ minimum at 500V DC for 2 mins. max.  
Current Rating: 1.5 Amps

Voltage Rating:  
DWV:

125 Volts AC  
1000 VAC, 60 Hz. 1 minute

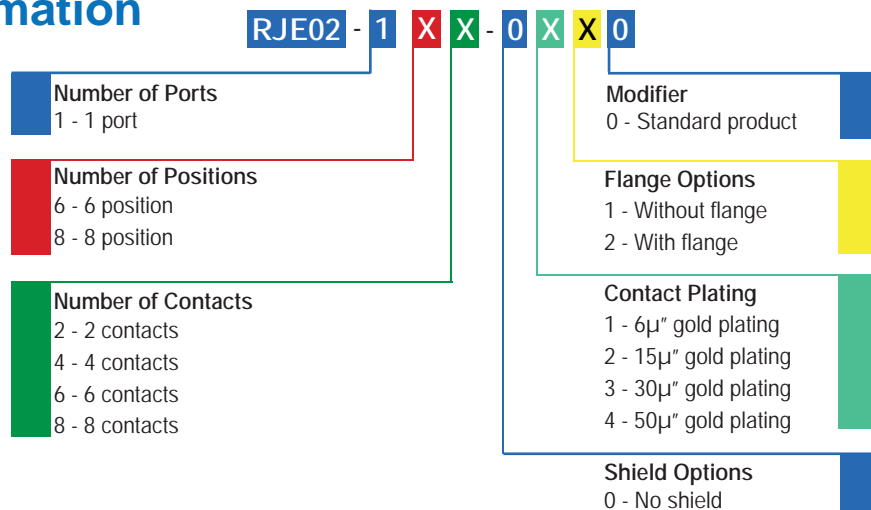
### Mechanical

Mating Connector Insertion Force: 5 lbs. maximum  
Mating Connector Pull Retention Force: 20 lbs. minimum  
Durability: 750 mating & unmating cycles  
Recommended Soldering Temperature: Wave soldering peaked at 260° C for 5 seconds max.

Connectors made with high temperature material are suitable for IR reflow  
-40°C to +70°C

Operating Temperature:

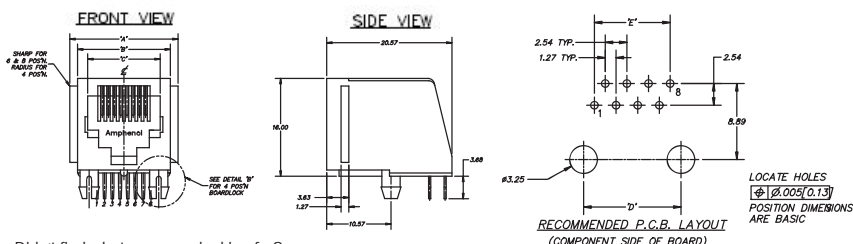
## Ordering Information



## Single Port

### Non-Shielded

RJE02-1XX-0X20



Didn't find what you were looking for?  
Please contact [sales@amphenolcanada.com](mailto:sales@amphenolcanada.com) and let us know what you need.

PART NUMBER	NO. OF POSITIONS	NO. OF CONTACTS	DIMENSIONS				
			"A"	"B"	"C"	"D"	"E"
RJE02-142-0X20	4	2	0.540 [13.72]	0.440 [11.18]	0.309 [7.85]	0.300 [7.62]	0.050 [1.27]
RJE02-144-0X20	4	4	0.540 [13.72]	0.440 [11.18]	0.309 [7.85]	0.300 [7.62]	0.150 [3.81]
RJE02-162-0X20	6	2	0.620 [15.75]	0.520 [13.21]	0.389 [9.88]	0.400 [10.16]	0.050 [1.27]
RJE02-164-0X20	6	4	0.620 [15.75]	0.520 [13.21]	0.389 [9.88]	0.400 [10.16]	0.150 [3.81]
RJE02-166-0X20	6	6	0.620 [15.75]	0.520 [13.21]	0.389 [9.88]	0.400 [10.16]	0.250 [6.35]
RJE02-188-0X20	8	8	0.700 [17.78]	0.600 [15.24]	0.469 [11.91]	0.450 [11.43]	0.350 [8.89]

## Single Port Low Profile

RJE03 series is a group of products within a family of standard Modular Jacks designed to meet requirements for a variety of applications.

Options within the RJE03 family include shielded & non shielded, and RJ11 & RJ45 configurations.



## Specifications

### Materials

Insulator:	Engineering thermoplastic. Complies with UL94V-0. Colour: Black.
Contacts:	Phosphor bronze hard temper with gold thickness options (6µ", 15µ", 30µ", 50µ") over 50µ" minimum nickel on contact mating area. 100µ" minimum matte tin plating on soldering tail.
Shield:	Copper alloy; nickel plated with tin dipped tail

### Electrical

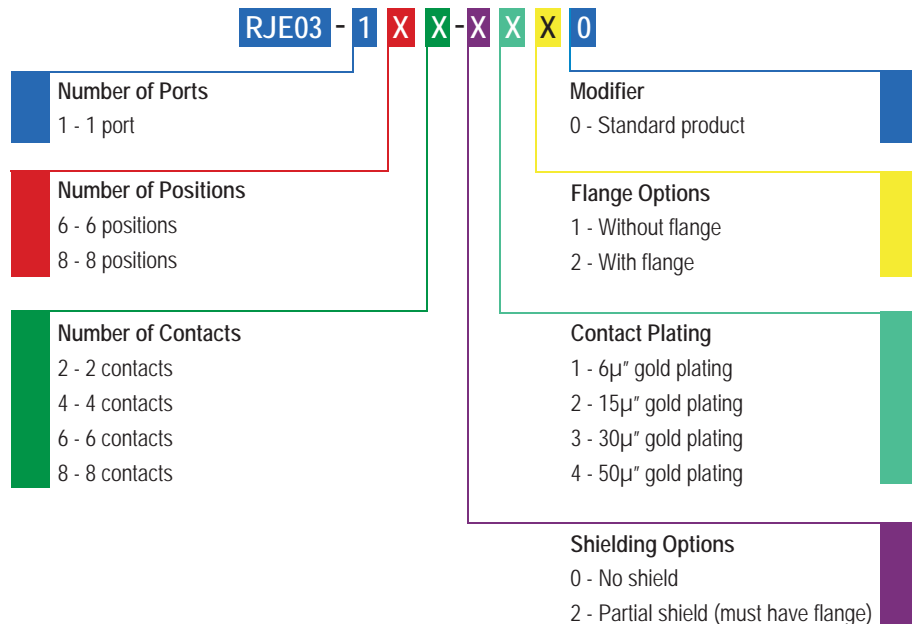
Contact Resistance:	20 mΩ maximum
Contact Resistance:	500 MΩ minimum at 500V DC for 2 mins. max.

Current Rating:	1.5 Amps
Voltage Rating:	125 Volts AC
DWV:	1000 VAC, 60 Hz. 1 minute

### Mechanical

Mating Connector Insertion Force:	5 lbs. maximum
Mating Connector Pull Retention Force:	20 lbs. minimum
Durability:	750 mating & unmating cycles
Recommended Soldering Temperature:	Wave soldering peaked at 260°C for 5 seconds maximum <i>Connectors made with high temperature material are suitable for IR reflow</i>
Operating Temperature:	-40°C to +70°C

## Ordering Information



Didn't find what you were looking for?  
Please contact [sales@amphenolcanada.com](mailto:sales@amphenolcanada.com) and let us know what you need.



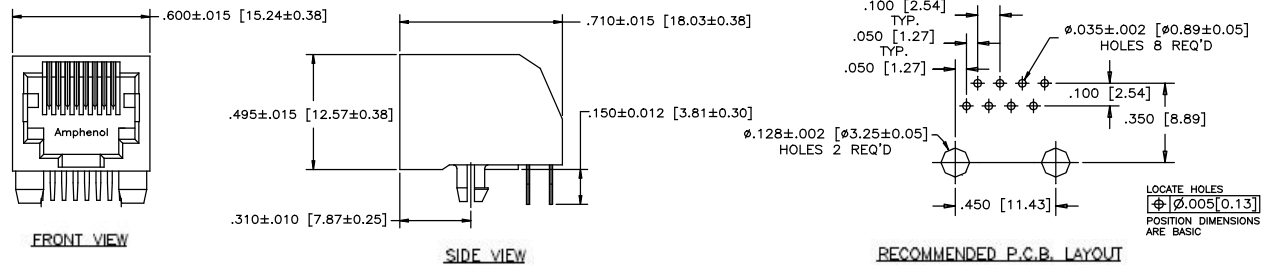
# RJE03 SERIES

SINGLE PORT LOW PROFILE

## Single Port

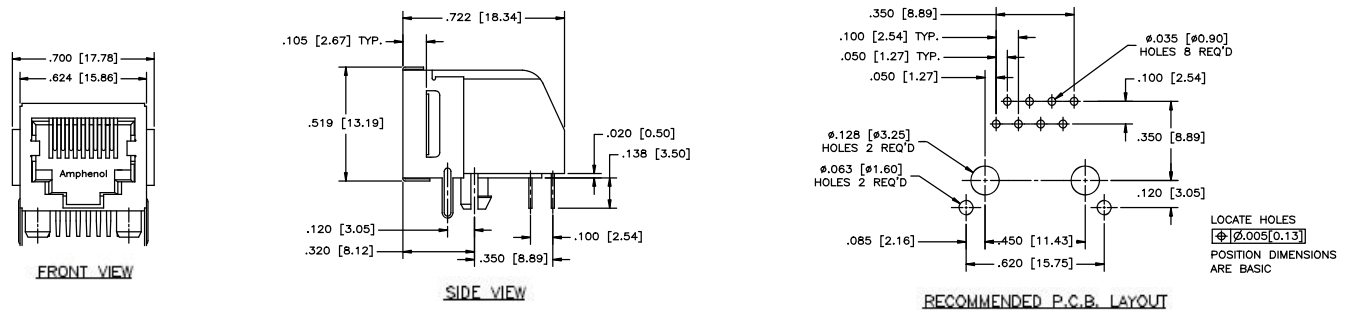
RJE03-188-0410

### Non-Shielded



### Shielded with Flange

RJE03-188-2420

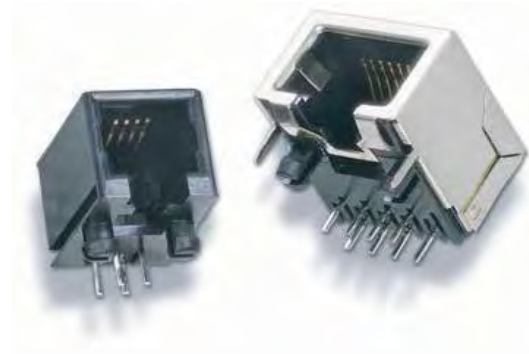


## Notes

## Ultra Low Profile

RJE05 series is a group of products within a family of standard Modular Jacks designed to meet requirements for a variety of applications.

Options within the RJE05 family include shielded or non shielded and RJ11 or RJ45 configurations.



## Specifications

### Material

Insulator:	Engineering thermoplastic. Complies with UL94V-0. Colour: Black.
Contacts:	Phosphor bronze hard temper with gold thickness options (6µ", 15µ", 30µ", 50µ") over 50µ" minimum nickel on contact mating area. 100µ" minimum matte tin plating on soldering tail.
Shield:	Copper alloy; nickel plated with tin dipped tail.

### Electrical

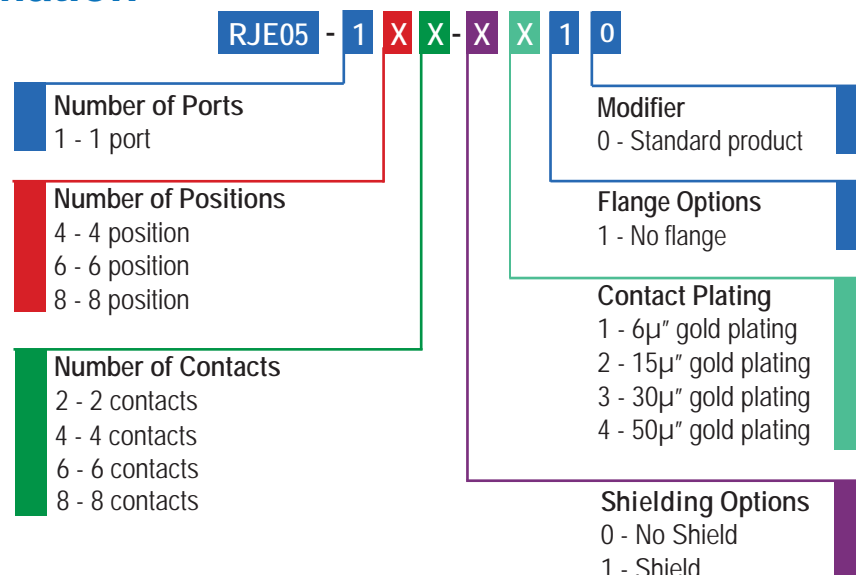
Contact Resistance:	20 mΩ maximum
Insulation Resistance:	500 MΩ minimum at 500V DC for 2mins. max.
Current Rating	1.5 Amps

Voltage Rating	125 Volts AC
DWV:	1000 VAC, 60 Hz. 1 minute

### Mechanical

Mating Connector Insertion Force:	5 lbs. maximum
Mating Connector Pull Retention Force:	20 lbs. minimum
Durability:	750 mating & unmating cycles
Recommended Soldering Temperature:	Wave soldering peaked at 260°C for 5 seconds maximum <i>Connectors made with high temperature material are suitable for IR reflow</i>
Operating Temperature:	-40°C to +70°C
UL File # :	E136228

## Ordering Information



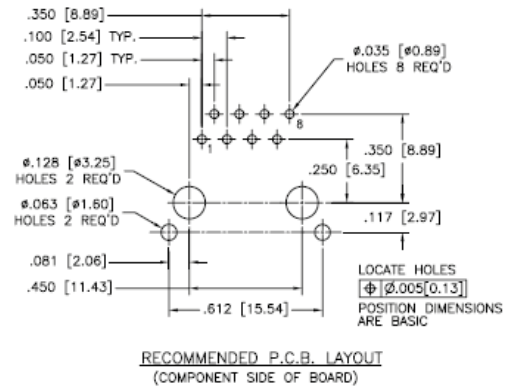
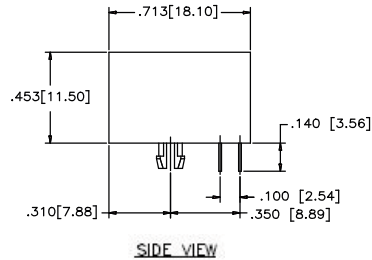
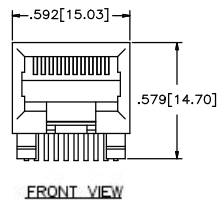
Didn't find what you were looking for?  
Please contact [sales@amphenolcanada.com](mailto:sales@amphenolcanada.com) and let us know what you need.

# RJE05 SERIES

ULTRA LOW PROFILE

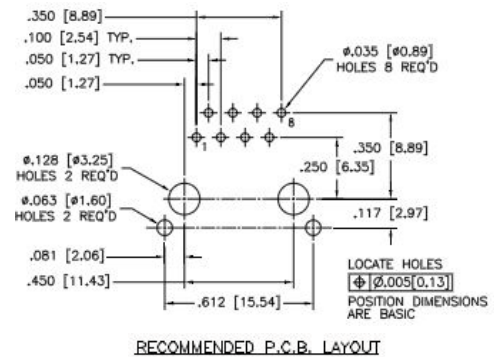
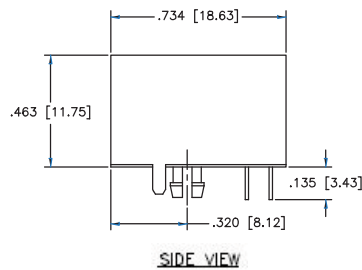
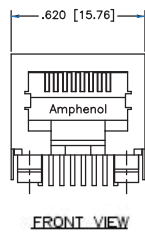
## Single Port

### Non-Shielded



### RJE05-188-1410

### Shielded



## Notes

## Single Port Surface Mount

RJE07 series is a group of products within a family of standard Modular Jacks designed to meet requirements for a variety of applications.

Options within the RJE07 family include shielded & non shielded, and RJ11 and RJ45 configurations.



## Specifications

### Materials

Insulator:	High temperature thermoplastic. Complies with UL94V-0. Colour: Black.
Contacts:	Phosphor bronze hard temper with gold thickness options (6µ", 15µ", 30µ", 50µ") over 50µ", minimum nickel on contact mating area. 100µ", minimum matte tin plating on soldering tail.
Shield:	Copper alloy; nickel plated with tin dipped tail

### Electrical

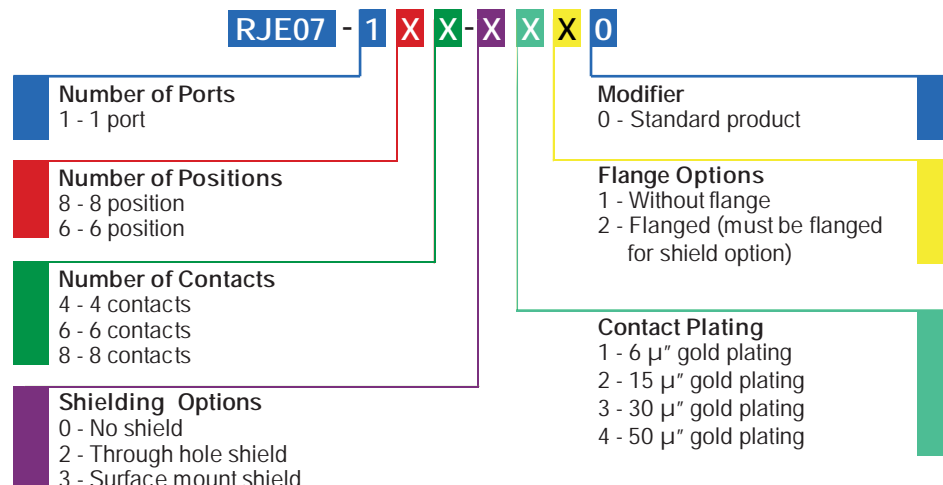
Contact Resistance:	20 mΩ maximum
Insulation Resistance:	500 MΩ minimum at 500V DC for 2 mins. max.

Current Rating:	1.5 Amps
Voltage Rating:	125 Volts AC
DWV:	1000 VAC, 60 Hz. 1 minute.

### Mechanical

Mating Connector Insertion Force:	5 lbs. maximum
Mating Connector Pull Retention Force:	20 lbs. minimum
Durability:	750 mating & unmating cycles
Recommended Soldering Temperature:	Reflow soldering at 260° C for 6 to 8 seconds maximum
Operating Temperature:	-40°C to +70°C
UL File # :	E136228

## Ordering Information



Didn't find what you were looking for?  
Please contact [sales@amphenolcanada.com](mailto:sales@amphenolcanada.com) and let us know what you need.

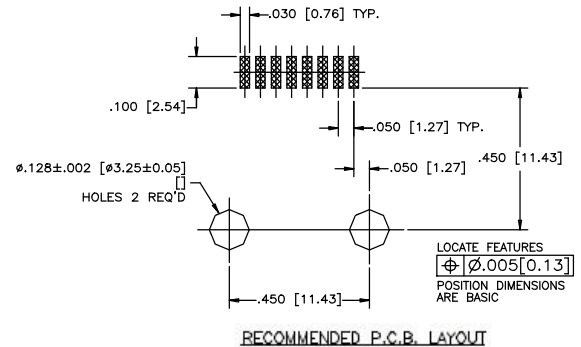
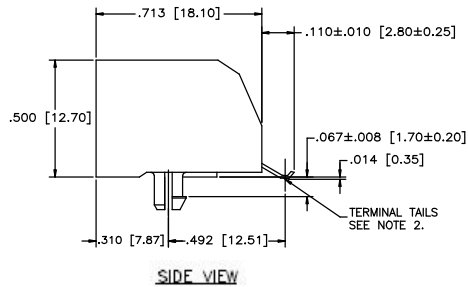
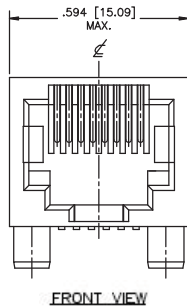
# RJE07 SERIES

SINGLE PORT SURFACE MOUNT

## Single Port

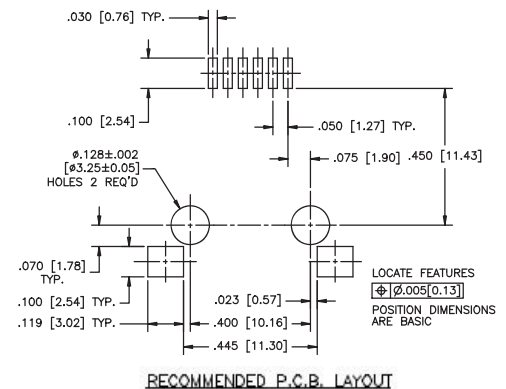
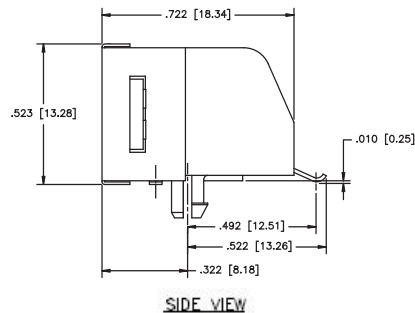
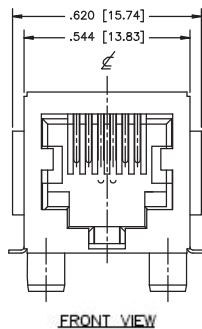
### Non-Shielded

RJE07-188-0410



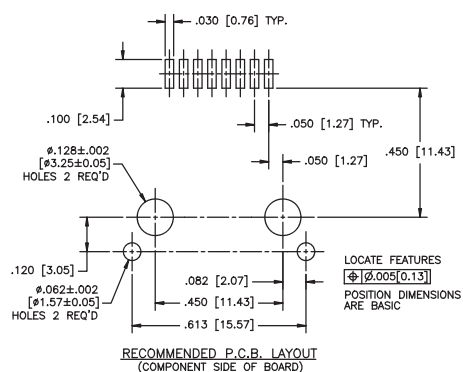
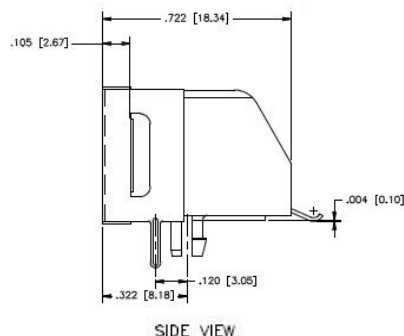
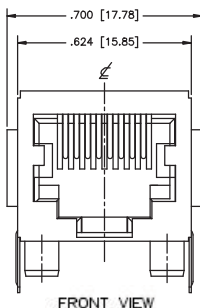
## Surface Mount Shield

RJE07-188-3420



## Through-Hole Shield

RJE07-188-2420



## Standard Profile

RJE09 series is a group of products within a family of standard Modular Jacks designed to meet requirements for a variety of applications.

Options within the RJE09 family include shielded & non shielded, and RJ11 & RJ45 configurations.



## Specifications

### Materials

Insulator:	Engineering thermoplastic. Complies with UL94V-0. Colour: Black.
Contacts:	Phosphor bronze hard temper with gold thickness options (6µ", 15µ", 30µ", 50µ") over 50µ" minimum nickel on contact mating area. 100µ" minimum matte tin or gold flash plating on tail area.
Shield:	Copper alloy; nickel plating over all

### Electrical

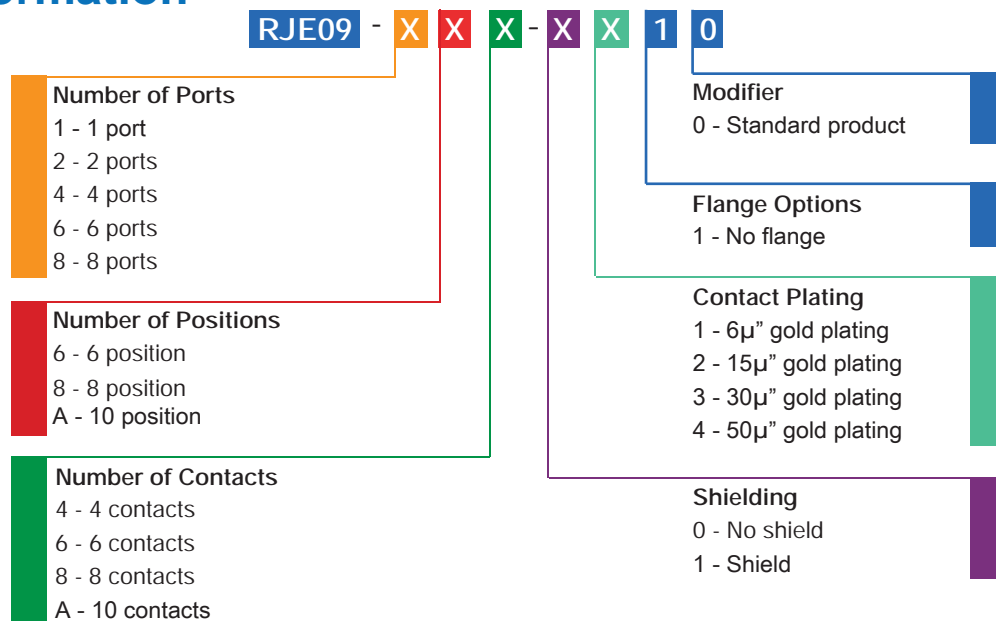
Contact Resistance:	25 mΩ maximum
Insulation Resistance:	500 MΩ minimum at 500V DC for 2 mins max.
Current Rating:	1.5 Amps

Voltage Rating:	125 Volts AC
DWV:	1000 VAC, 60 Hz. 1 minute

### Mechanical

Mating Connector Insertion Force:	5 lbs. maximum
Mating Connector Pull Retention Force:	20 lbs. minimum
Durability:	750 mating & unmating cycles
Recommended Soldering Temperature:	Wave soldering peaked at 260°C for 5 seconds maximum
	<i>Connectors made with high temperature material are suitable for IR reflow</i>
Operating Temperature:	-40°C to +70°C
UL File # :	E136228

## Ordering Information



Didn't find what you were looking for?

Please contact [sales@amphenolcanada.com](mailto:sales@amphenolcanada.com) and let us know what you need.

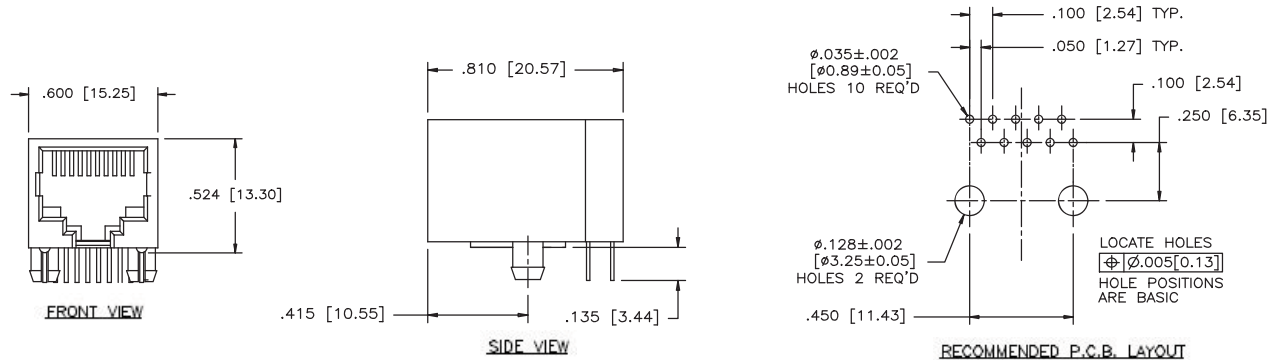
# RJE09 SERIES

STANDARD PROFILE

## Single Port

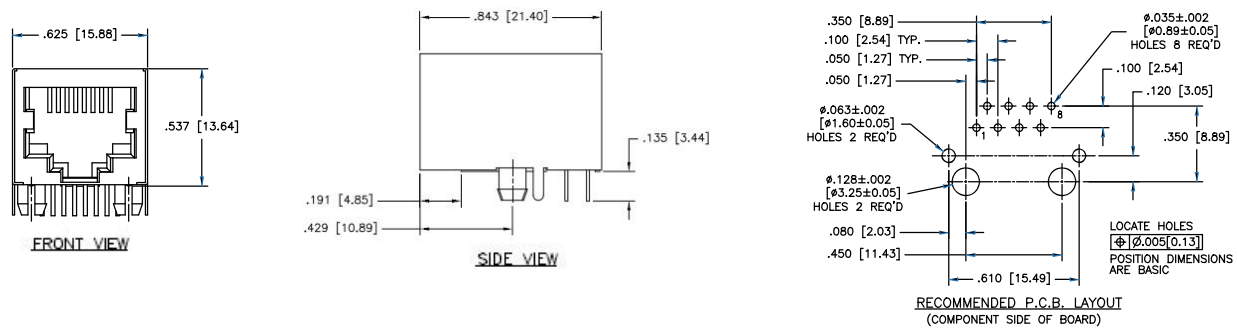
Non-Shielded

RJE09-1AA-0410



Shielded

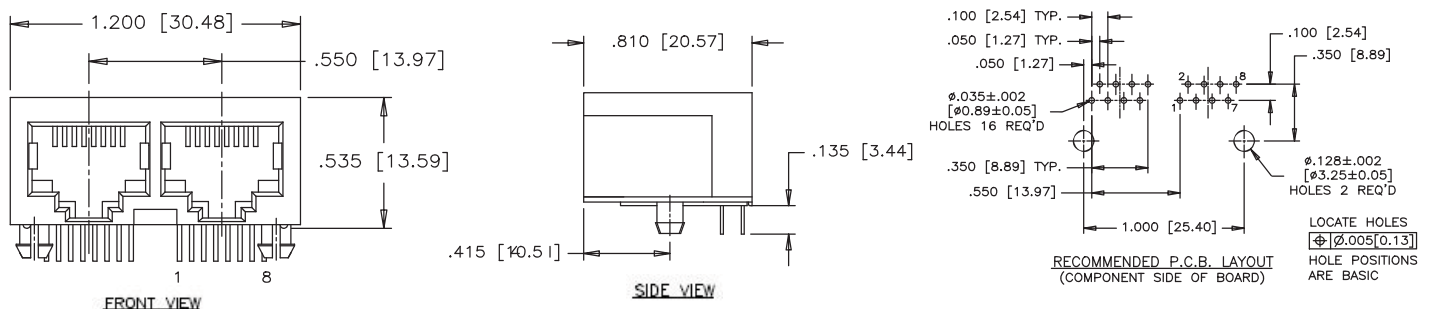
RJE09-188-1410



## Multi Port

Non-Shielded

RJE09-288-0410



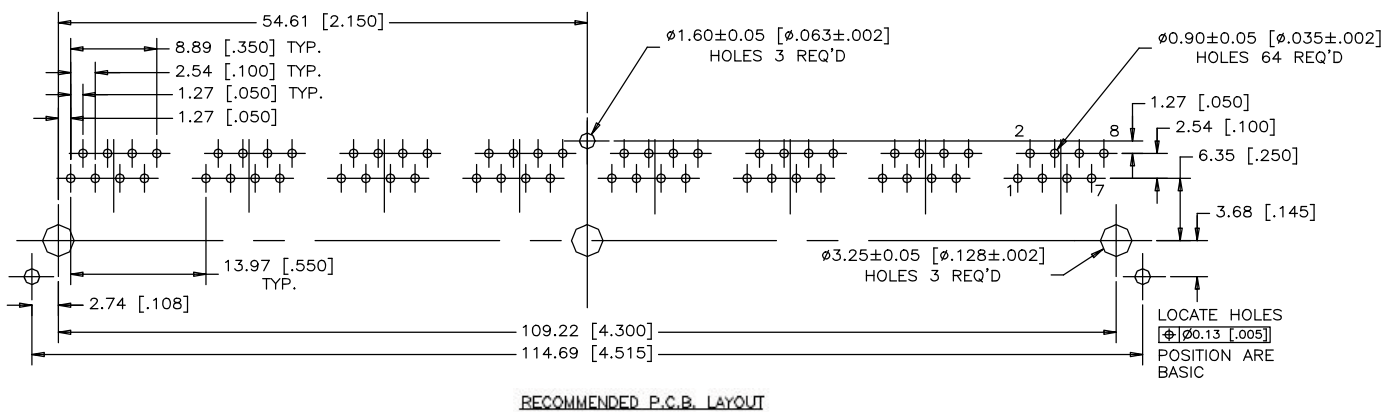
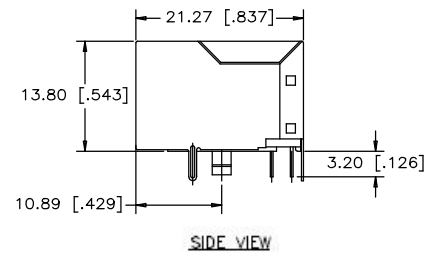
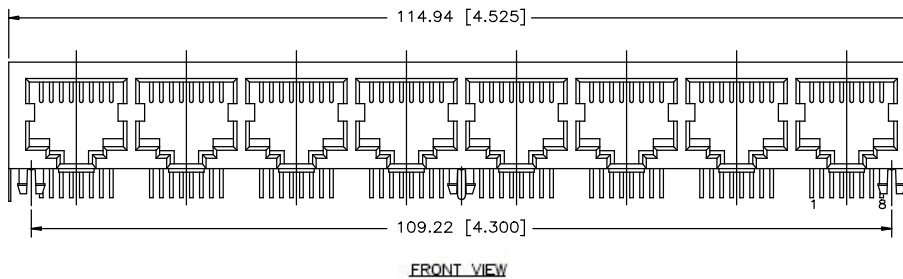


# RJE09 SERIES

STANDARD PROFILE

## Shielded

RJE09-888-1410

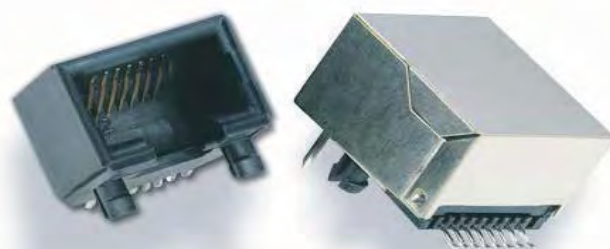


# RJE15 SERIES

SINGLE PORT LOW PROFILE

## Single Port Low Profile

The RJE15 low profile connector is built to meet your high volume RJ requirements. This is a true pick and place compatible SMT connector and is available with or without shielding, and a variety of options including number of contacts, plating thickness, and colour. Built with high temperature engineering thermoplastic and suitable for IR Reflow solder process.



## Specifications

### Material

Insulator:	High temp. thermoplastic. Complies with UL94V-0. Colour: Black.
Contacts:	Phosphor bronze hard temper with gold thickness options (6µ", 15µ", 30µ", 50µ") over 50µ" minimum nickel on contact mating area. 100µ" minimum matte tin or gold flash plating on tail area.
Shield:	Copper alloy; nickel plating over all.

### Electrical

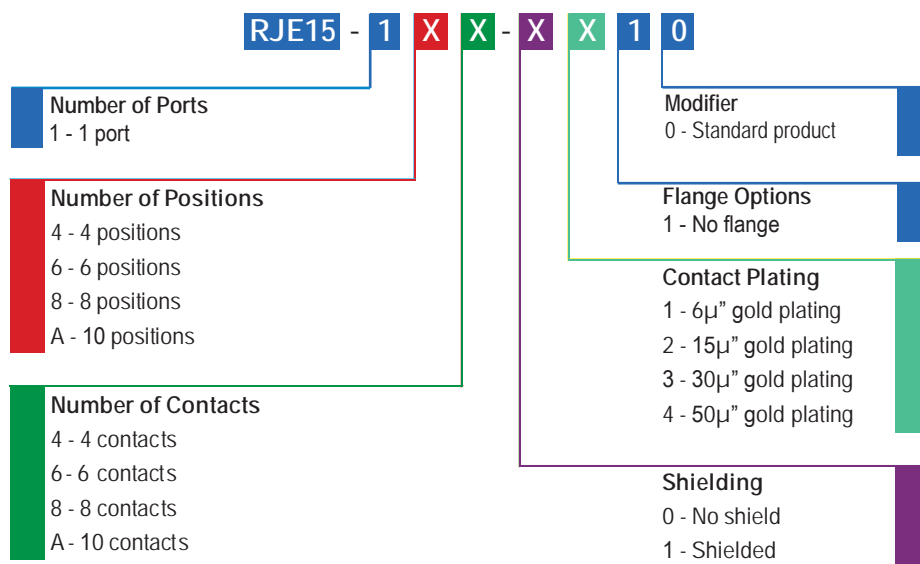
Contact Resistance:	25 mΩ maximum
---------------------	---------------

Insulation Resistance:	1000 MΩ minimum at 500V DC for 2 mins. max.
Current Rating:	1.5 Amps
Voltage Rating:	125 Volts AC
DWV:	1000 VAC, 60 Hz. 1 minute

### Mechanical

Mating Connector Insertion Force:	5 lbs. maximum
Mating Connector Pull Retention Force:	20 lbs. minimum
Durability:	750 mating & unmating cycles
Recommended Soldering Temperature:	IR Reflow peaked at 260°C for 5 to 8 seconds maximum
Operating Temperature:	-40°C to +70°C

## Ordering Information



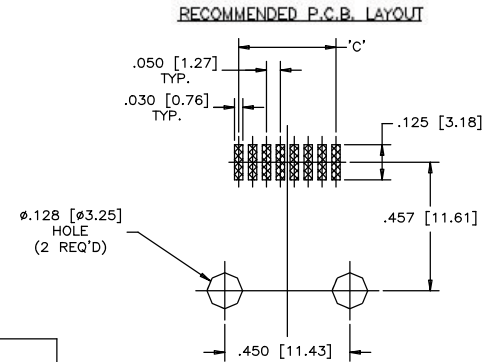
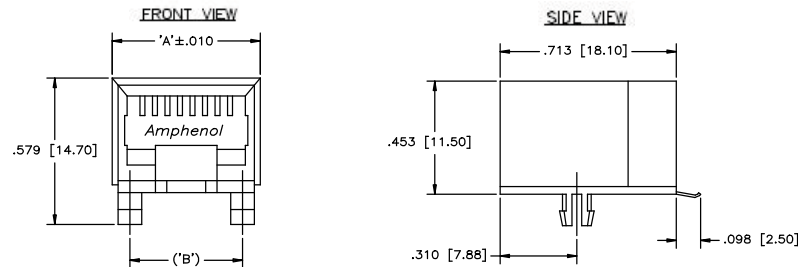
Didn't find what you were looking for?

Please contact [sales@amphenolcanada.com](mailto:sales@amphenolcanada.com) and let us know what you need.

## Single Port

RJE15-1XX-0410

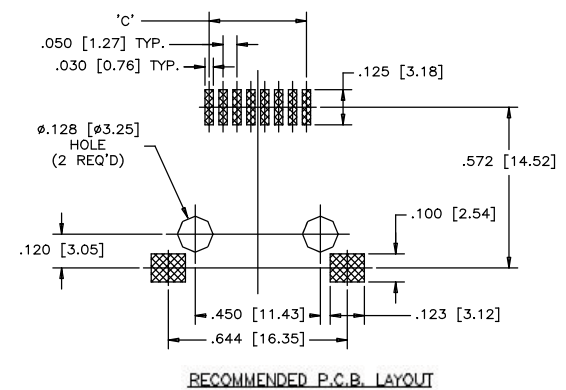
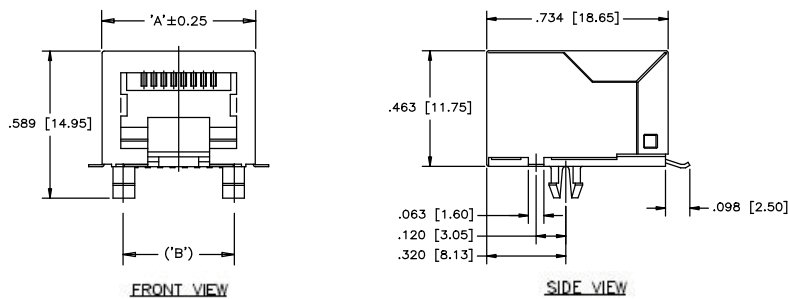
### Non-Shielded



NO. OF POSITIONS	DIMENSIONS		
	'A'	'B'	'C'
4	.441 [10.43]	.300 [7.62]	.150 [3.81]
6	.510 [12.95]	.400 [10.16]	.250 [6.35]
8	.592 [15.04]	.450 [11.43]	.350 [8.89]
10	.620 [15.74]	.450 [11.43]	.450 [11.43]

RJE15-1XX-1410

### Shielded



NO. OF POSITIONS	DIMENSIONS		
	'A'	'B'	'C'
4	.469 [11.92]	.300 [7.62]	.150 [3.81]
6	.538 [13.67]	.400 [10.16]	.250 [6.35]
8	.620 [15.74]	.450 [11.43]	.350 [8.89]
10	.620 [15.74]	.450 [11.43]	.450 [11.43]

# RJULE SERIES

RECESSED, LOW PROFILE

## Recessed, Low Profile

The RJULE is a series of single port RJ45 Modular Jacks designed for slim profile applications. With a profile height of less than 10mm this connector is perfect where vertical space is limited. Standard and rear mount shield options for superior EMI performance makes this part ideal for LAN and router applications.



## Specifications

### Material

Housing:	High temperature engineering thermoplastic; flammability rating UL 94V-0
Contacts:	Phosphor bronze
Plating:	Gold plated on mating surfaces over 50µ" (1.27 microns) minimum nickel underplate
Shield:	Copper alloy; nickel plated

### Electrical

Contact Resistance:	20 mΩ maximum
Insulation Resistance:	500 MΩ minimum at 500V DC for 2 minutes maximum
Current Rating:	1.5 Amps

Voltage Rating:	125 Volts AC
DWV:	1000 VAC, 60 Hz. 1 minute

### Mechanical

Mating Connector Insertion Force:	5 lbs. maximum
Mating Connector Pull Retention Force:	20 lbs. minimum
Durability:	750 mating & unmating cycles
Recommended Soldering Temperature:	IR Reflow peaked at 260°C for 5 to 8 seconds maximum
Operating Temperature:	-40°C to +70°C
UL File # :	E135615

## Ordering Information

RJULE - 4 X X X X - 01 X	
Number of Positions 4 - 8 positions	Packaging Blank - Tray T - Tape and reel
Contact Plating 0 - 1 ~ 3 µ" gold plating 1 - 15 µ" gold plating 2 - 30 µ" gold plating 3 - 50 µ" gold plating	Number of Ports 01 - 1 port
Housing Options 1 - Black 2 - Yellow 3 - Red	Shielding Options 0 - No shield 1 - Standard shield 2 - Shield with side ground tabs design to touch with mounting panel 3 - Shield without ground tab
Number of Contacts 4 - 4 contacts 6 - 6 contacts 8 - 8 contacts	

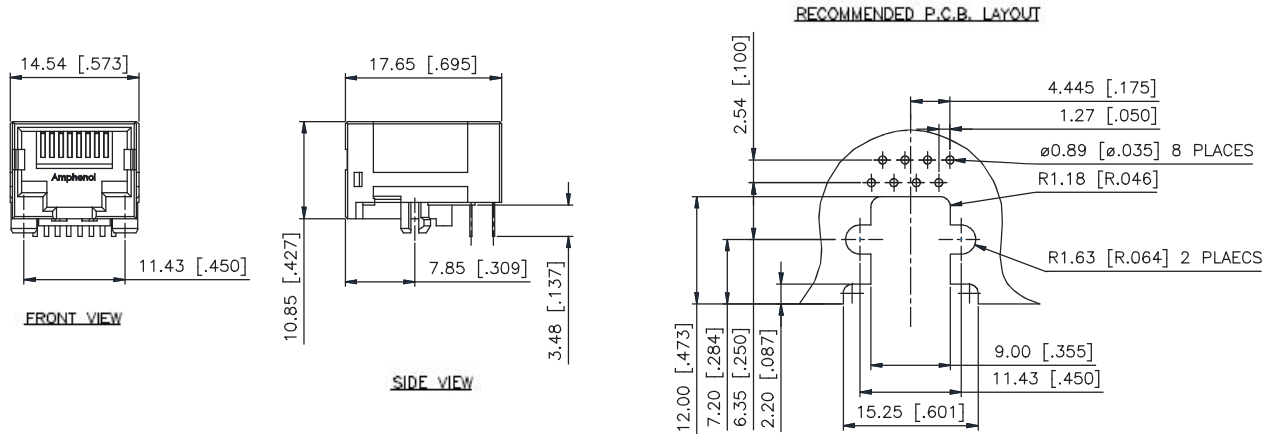
Didn't find what you were looking for?

Please contact [sales@amphenolcanada.com](mailto:sales@amphenolcanada.com) and let us know what you need.

## Single Port

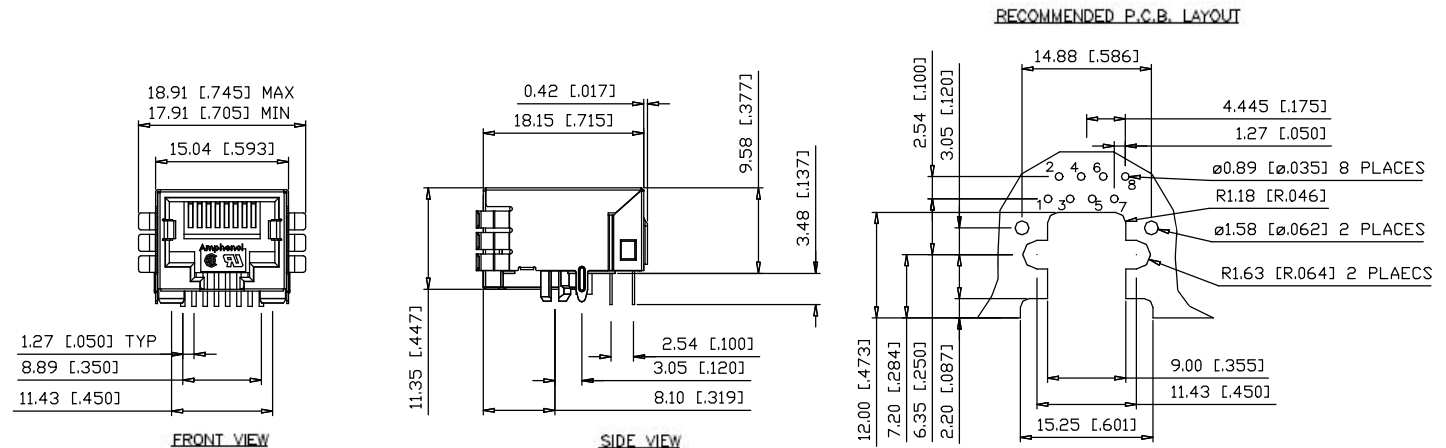
### Non-Shielded

RJULE-43180-01



RJULE-43182-01

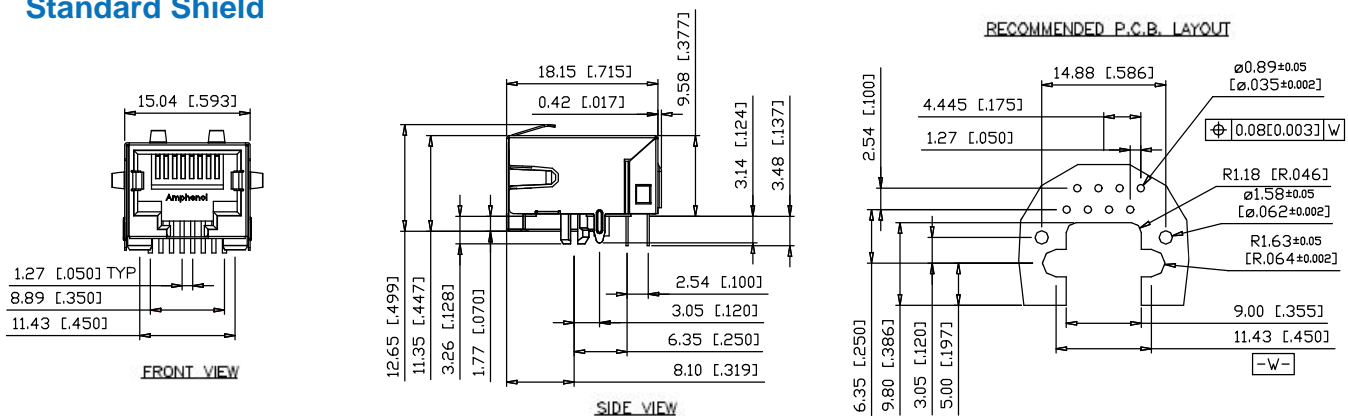
### Shielded with Side Ground Tabs



## Single Port

### Standard Shield

RJULE-43181-01



RJ45 PRESS FIT

## RJ45 Press Fit

The RJE56 series is designed for applications where soldering is not an option. The pressfit contacts and shield tabs have the "Eye of the Needle" design and provide good PCB retention and reliable electrical performance.



## Specifications

## Material

<b>Housing:</b>	High temperature thermoplastic; complies with UL 94V-0. Colour: Black.
<b>Contacts:</b>	Phosphor bronze hard temper with gold thickness options (6µ", 15µ", 30µ", 50µ") over 50µ" minimum nickel on contact mating area. 100µ" minimum tin lead plating on press fit tail.
<b>Shield:</b>	Stainless steel

## Electrical

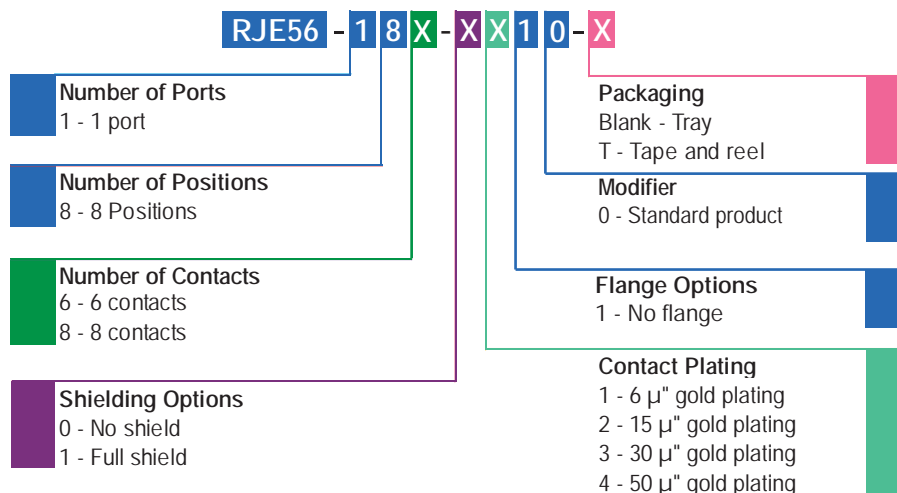
**Contact Resistance:** 20 mΩ maximum  
**Insulation Resistance:** 500 MΩ minimum

Current Rating: 1.5 Amps  
Voltage Rating: 125 Volts AC  
DWV: 1000 VAC, 60 Hz, 1 min.

## Mechanical

Mating Connector Insertion Force: 5 lbs. maximum  
Mating Connector Pull Retention Force: 20 lbs. minimum  
Durability: 750 mating & unmating cycles  
Recommended Soldering Temperature: IR Reflow peaked at 260°C  
for 5 to 8 seconds maximum  
Operating Temperature: -40°C to +70°C

## Ordering Information



Didn't find what you were looking for?

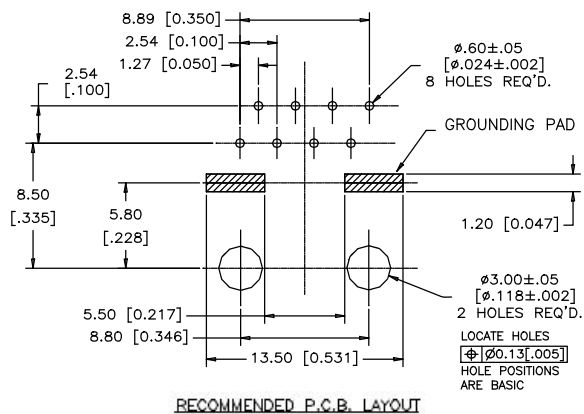
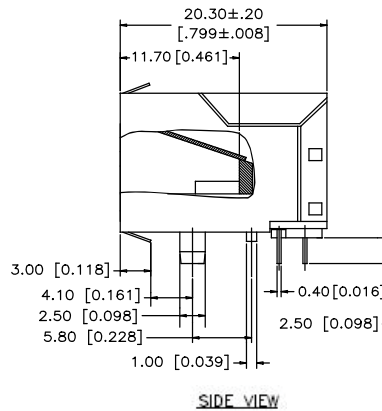
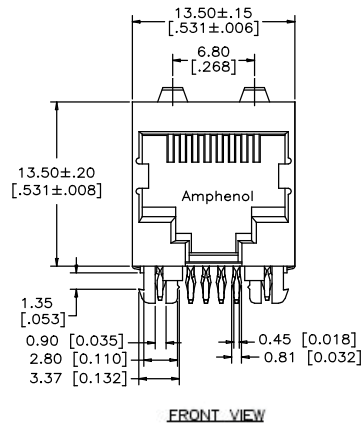
Please contact [sales@amphenolcanada.com](mailto:sales@amphenolcanada.com) and let us know what you need.

## RECESSED, LOW PROFILE

## Single Port

**RJE56-188-1410**

## Shielded



## Notes



# RJE73 SERIES

RJ45 LOW PROFILE WITH LEDS

## RJ45 Low Profile with LEDs

The RJE73 Modular Jack is a low profile RJ45 with LEDs and superior EMI shielding with a small foot print for space sensitive designs. Built-in LEDs provide link activity and network verification. This product is ideal for LAN applications such as adapter cards and routers.



## Specifications

### Material

Insulator:	High temperature thermoplastic; complies with UL 94V-0. Colour: Black.
Contacts:	Phosphor bronze hard temper with gold plating options 50µ" minimum nickel on contact mating area. 100µ" minimum matte tin on solder tails.
Shield:	Stainless steel with tin dipped tails
LED:	Tin plating on LED tails

### Mechanical

Mating Connector	
Insertion Force:	5 lbs. maximum
Mating Connector Pull	
Retention Force:	20 lbs. minimum
Durability:	750 mating & unmating cycles
Recommended Soldering	Wave soldering peaked at 260°C
Temperature:	5 seconds maximum

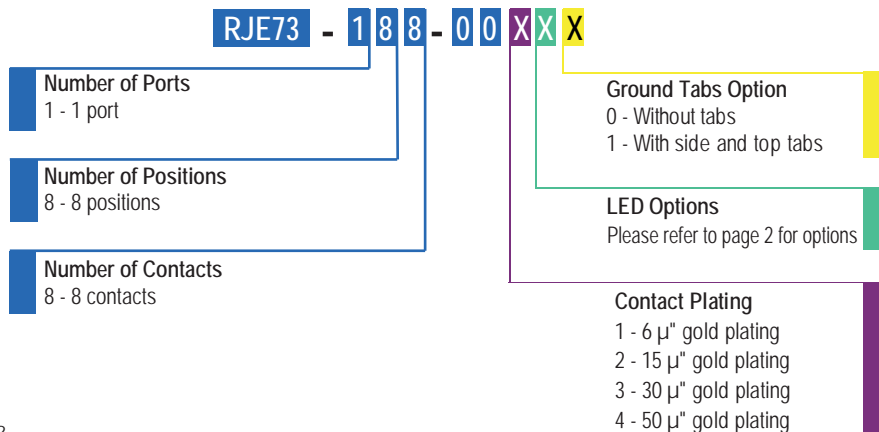
*Connectors without LEDs are suitable for IR reflow*

Operating Temperature: -40°C to +70°C

### Electrical

Contact Resistance:	20 mΩ maximum
Insulation Resistance:	500 MΩ minimum at 500V DC for 2 minutes maximum
Current Rating:	1.0 Amps
Voltage Rating:	125 Volts AC
DWV	1000 VAC, 60 Hz. 1 minute
LED Forward DC Current:	20mA typical
LED Forward Voltage:	1.9 Volts maximum @ 2mA (for single colours) 2.6 Volts maximum @ 20mA (for Bi-colours)
LED Reverse Voltage:	5 Volts minimum
LED Light Intensity:	0.4 to 1.5 mcd @ 2mA (for single colours) 0.5 mcd minimum @ 2mA (for Bi-colours)
LED Wave Length:	Yellow: 587 ± 7 nm measured @ 20mA Green: 565 ± 6 nm measured @ 20mA Red: 625 ± 5 nm measured @ 20mA
UL File # :	E135615

## Ordering Information

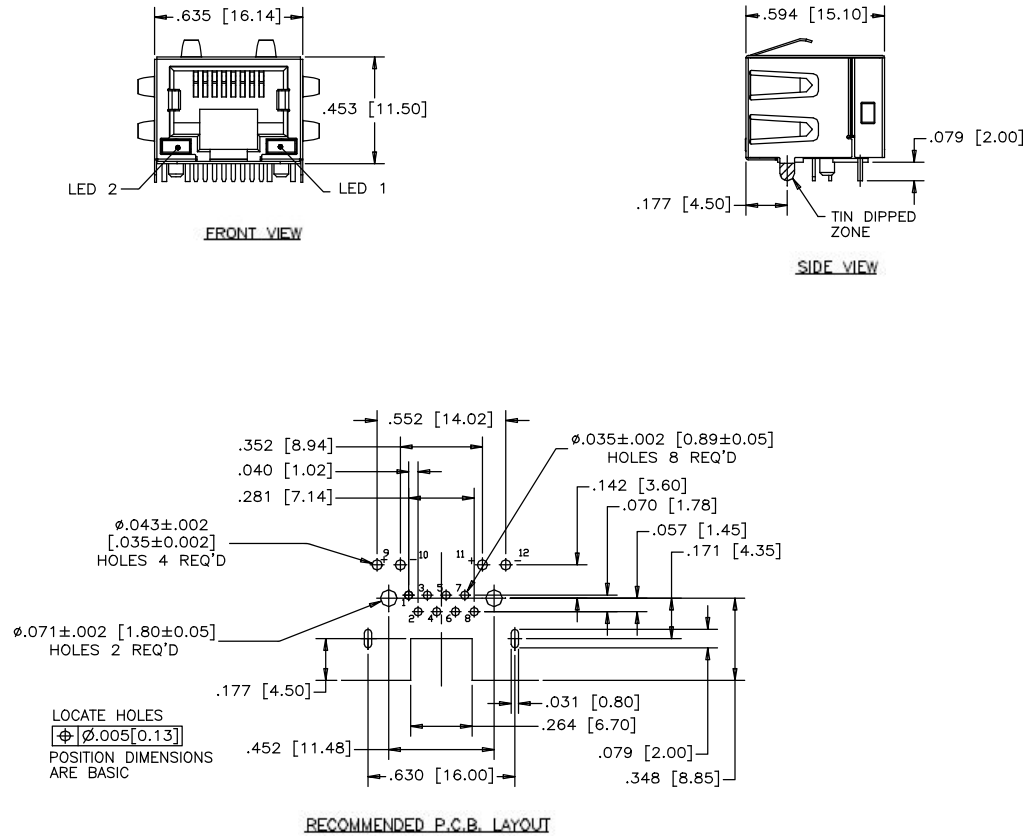


Didn't find what you were looking for?  
Please contact [sales@amphenolcanada.com](mailto:sales@amphenolcanada.com) and let us know what you need.

## Single Port

RJE73-188-004X1

### Shielded



### Notes

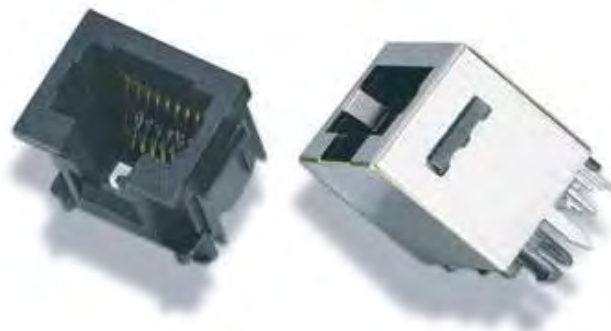
# RJE06 SERIES

SINGLE PORT SLIM PROFILE

## Single Port Slim Profile

RJE06 series is a group of products within a family of standard Modular Jacks designed to meet requirements for a variety of applications.

Options within the RJE06 family include shielded & non shielded, and RJ11 & RJ45 configurations.



## Specifications

### Materials

Insulator:	Engineering thermoplastic. Complies with UL94V-0. Colour: Black.
Contacts:	Phosphor bronze hard temper with gold thickness options (6µ", 15µ", 30µ", 50µ") over 50µ" minimum nickel on contact mating area. 100µ" minimum matte tin or gold flash plating on tail area.
Shield:	Copper alloy; nickel plating over all.

### Electrical

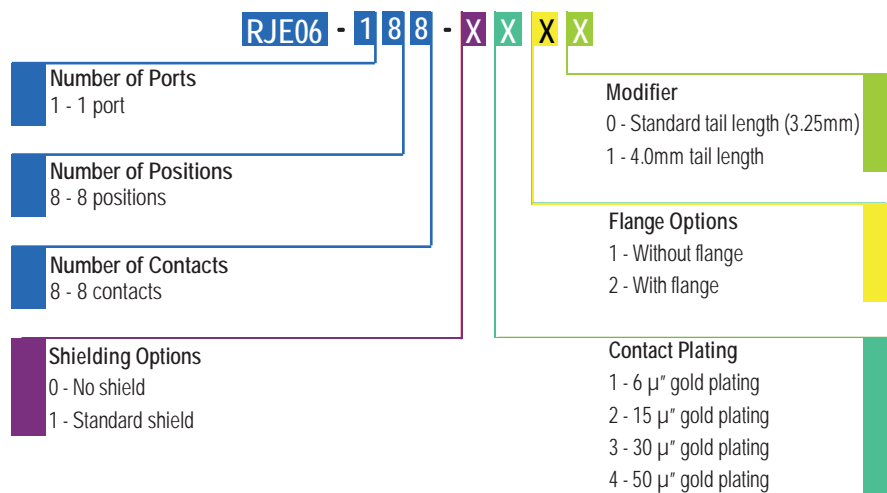
Contact Resistance:	20 mΩ maximum
Insulation Resistance:	500 MΩ minimum at 500V DC for 2 mins max.
Current Rating:	1.5 Amps

Voltage Rating:	125 Volts AC
DWV:	1000 VAC, 60 Hz. 1 minute.

### Electrical

Mating Connector Insertion Force:	5 lbs. maximum
Mating Connector Pull Retention Force:	20 lbs. minimum
Durability:	750 mating & unmating cycles
Recommended Soldering Temperature:	Wave soldering peaked at 260°C for 5 seconds maximum
	<small>Connectors made with high temperature material are suitable for IR reflow</small>
Operating Temperature:	-40°C to +70°C
UL File # :	E136228

## Ordering Information



Didn't find what you were looking for?  
Please contact [sales@amphenolcanada.com](mailto:sales@amphenolcanada.com) and let us know what you need.

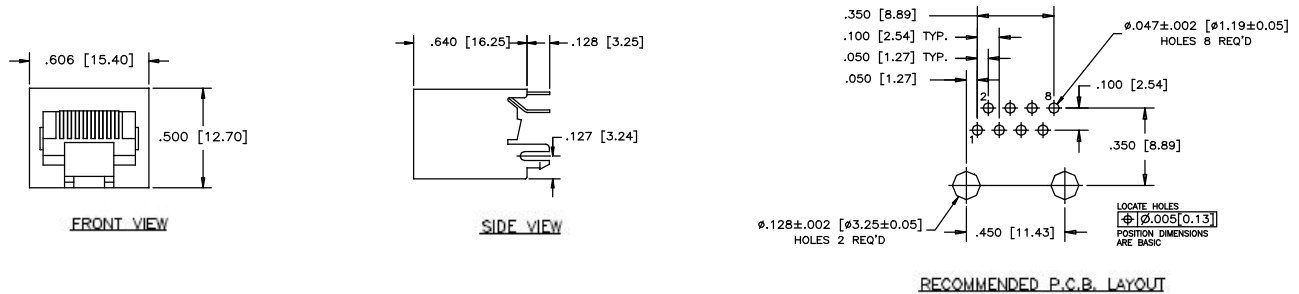
# RJE06 SERIES

SINGLE PORT SLIM PROFILE

## Single Port

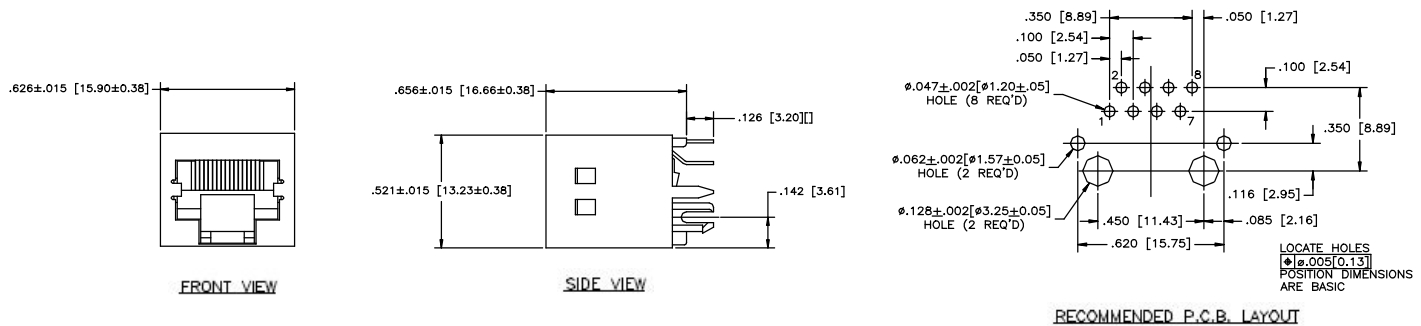
RJE06-188-0410

### Non-Shielded



RJE06-188-1410

### Shielded



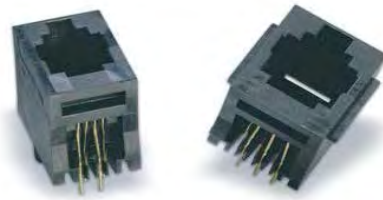
## Notes

# RJE08 SERIES

SINGLE PORT STANDARD PROFILE

## Single Port Standard Profile

RJE08 series is a group of products within a family of standard Modular Jacks designed to meet requirements for a variety of applications. Options within the RJE08 include with & without flange, and RJ11 and RJ45 configurations.



## Specifications

### Material

**Insulator:** Engineering thermoplastic. Complies with UL94V-0. Colour: Black.

**Contacts:** Phosphor bronze hard temper with gold thickness options (6µ", 15µ", 30µ", 50µ") over 50µ" minimum nickel on contact mating area. 100µ" minimum matte tin or gold flash plating on tail area.

### Electrical

**Contact Resistance:** 25 mΩ maximum

**Insulation Resistance:** 500 MΩ minimum at 500V DC for 2 minutes max.

**Current Rating:** 1.5 Amps

**Voltage Rating:** 125 Volts AC

**DWV:** 1000 VAC, 60 Hz. 1 minute

### Mechanical

**Mating Connector Insertion Force:** 5 lbs. maximum

**Mating Connector Pull Retention Force:** 20 lbs. minimum

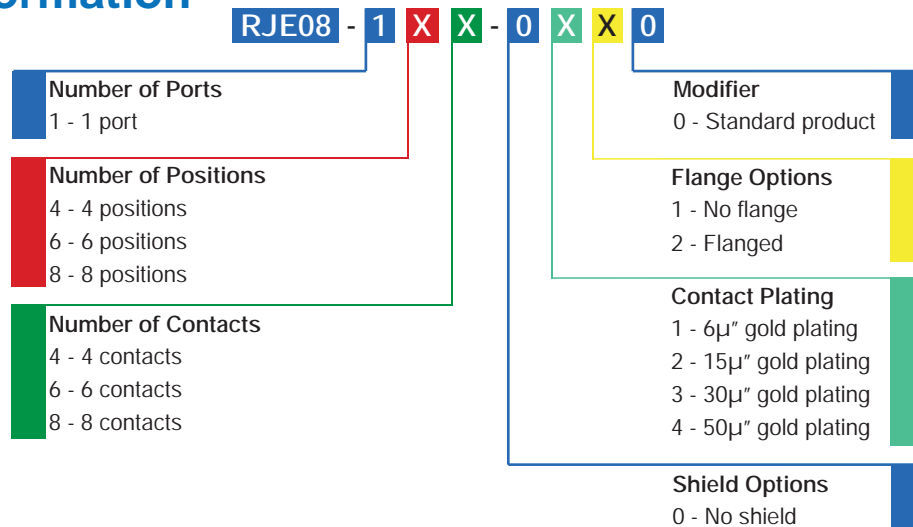
**Durability:** 750 mating & unmating cycles

**Recommended Soldering Temperature:** Wave soldering peaked at 260°C for 5 seconds maximum  
*Connectors made with high temperature material are suitable for IR reflow*

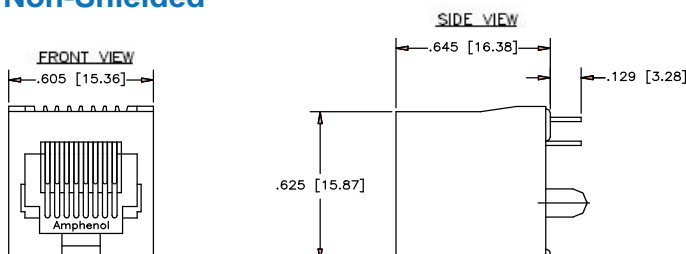
**Operating Temperature:** -40°C to +70°C

**UL File # :** E136228

## Ordering Information



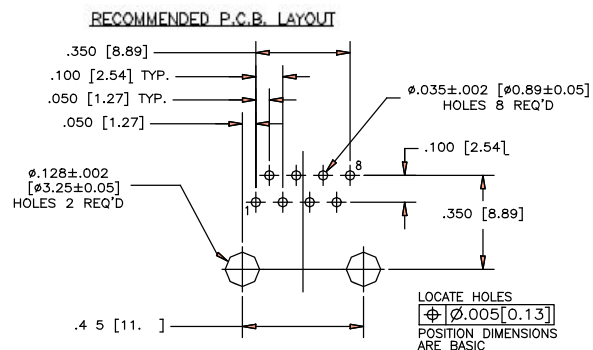
## Single Port Non-Shielded



Didn't find what you were looking for?

Please contact [sales@amphenolcanada.com](mailto:sales@amphenolcanada.com) and let us know what you need.

## RJE08-188-0410



## Single Port Surface Mount

The RJE23 series is designed for high volume production where a vertical Modular Jack is required. Shielding provides increased EMI performance. Surface mount contacts and a fitting nail bracket assist in speeding up the production process.



## Specification

### Material

Housing:	High temperature thermoplastic; complies with UL 94V-0. Colour: Black.
Shield:	Copper alloy; matte tin plating
Contacts:	Phosphor bronze hard temper with gold thickness options (6 $\mu$ ", 15 $\mu$ ", 30 $\mu$ ", 50 $\mu$ ") over 50 $\mu$ " minimum nickel on contact mating area. 100 $\mu$ " minimum matte tin over nickel on soldering tail.
Hold Down:	Copper alloy; matte tin plating
Coplanarity:	Maximum gap between all terminal tails is .004"

Current Rating:	1.5 Amps
Voltage Rating:	125 Volts AC
DWV:	1000 VAC, 60 Hz. 1 minute

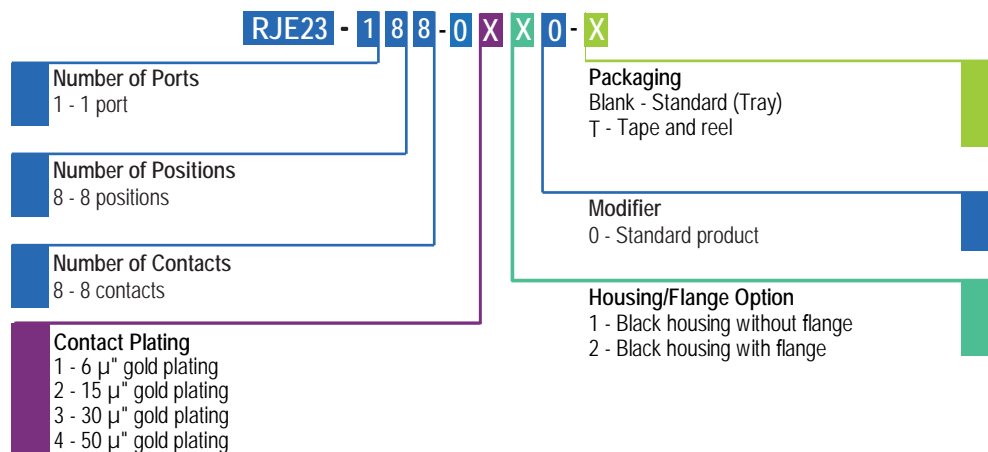
### Mechanical

Mating Connector	
Insertion Force:	5 lbs. maximum
Mating Connector Pull	
Retention Force:	20 lbs. minimum
Durability:	750 mating & unmating cycles
Recommended Soldering	IR Reflow peaked at 260°C
Temperature:	for 5 to 8 seconds maximum
Operating Temperature:	-40°C to +70°C

### Electrical

Contact Resistance:	20 m $\Omega$ maximum
Insulator Resistance:	500 M $\Omega$ minimum at 500V DC for 2 mins. max.

## Ordering Information



Didn't find what you were looking for?  
Please contact [sales@amphenolcanada.com](mailto:sales@amphenolcanada.com) and let us know what you need.

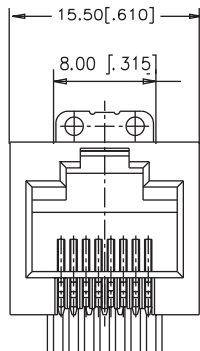
# RJE23 SERIES

SINGLE PORT SURFACE MOUNT

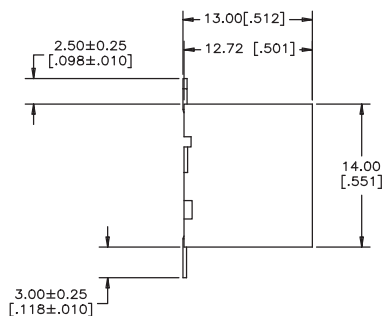
## Single Port

RJE23-188-0410

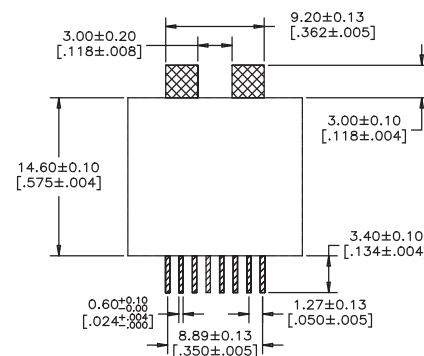
### Non-Shielded



FRONT VIEW



SIDE VIEW



RECOMMENDED P.C.B. LAYOUT

### Notes



## Single Port

The RJE74 series, with superior EMI shielding, is built to fit your Registered Jack requirements. The vertical 10P10C version is available with an RMK4 key interface to prevent an 8P8C plug from entering and damaging the connector. Includes optional Mylar cover for automated assembly equipment.



## Specifications

### Material

Insulator:	High temperature thermoplastic; complies with UL 94V-0. Colour: Black.
Contacts:	Phosphor bronze hard temper with 30µ" minimum gold thickness over 50µ" minimum nickel on contact mating area. 100µ" minimum matte tin plating on soldering tail.
Shield:	Stainless steel; pure tin dipped tails
LED:	Tin plating on LED tails

### Electrical

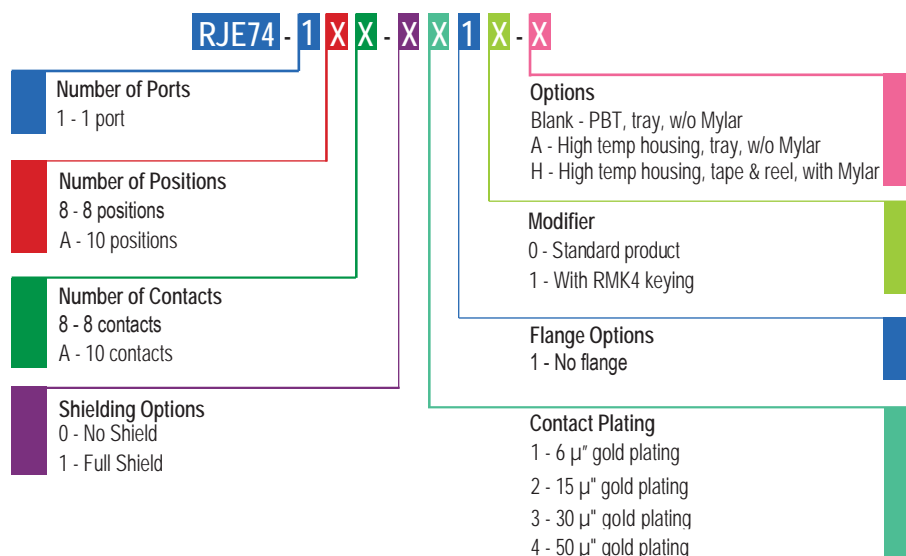
Contact Resistance:	20 mΩ maximum
Insulation Resistance:	500 MΩ minimum at 500V DC for 2 minutes maximum
Current Rating:	1.5 Amps

Voltage Rating:	125 Volts AC
DWV:	1000 VAC, 60 Hz. 1 minute

### Mechanical

Mating Connector Insertion Force:	5 lbs. maximum
Mating Connector Pull Retention Force:	20 lbs. minimum
Durability:	750 mating & unmating cycles
Recommended Soldering Temperature:	IR Reflow peaked at 260°C for 5 to 8 seconds maximum
Operating Temperature:	-40°C to +70°C
UL File # :	E135615

## Ordering Information



Didn't find what you were looking for?

Please contact [sales@amphenolcanada.com](mailto:sales@amphenolcanada.com) and let us know what you need.

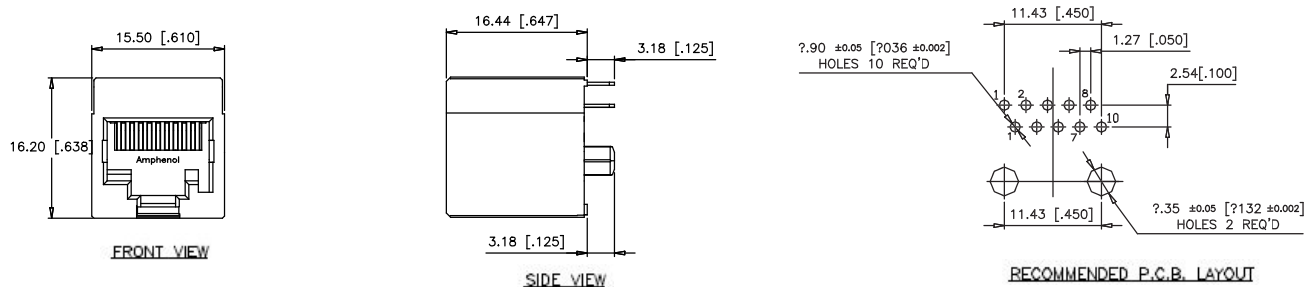
# RJE74 SERIES

SINGLE PORT

## Single Port

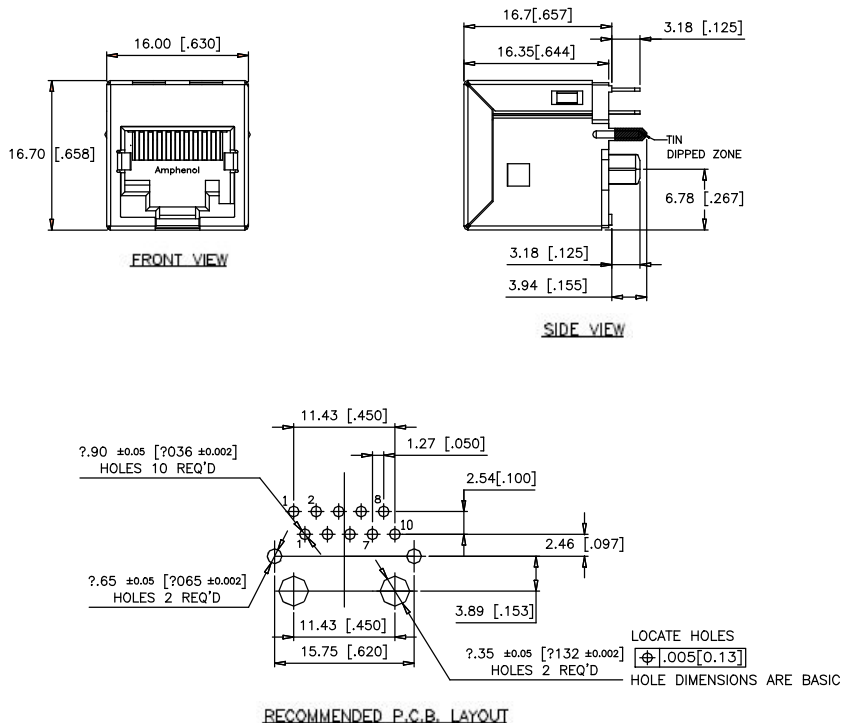
RJE74-1XX-0411

### Non-Shielded



### Shielded

RJE74-1XX-1411



## 2, 4, and 8 Ports with LEDs and Shield Options

The RJSAE is a RJ45 stackable connector that reduces component and labour costs by incorporating LEDs into the connector. Its stackable feature enables more ports with the same board space. With superior EMI performance, the option of configuring your connector with a ferrite filter is available to further reduce crosstalk in noisy applications. Amphenol offers a variety of other options such as shielded and unshielded, and a variety of LED combinations and port configurations.



## Specifications

### Material

Insulator:	High temperature thermoplastic; complies with UL 94V-0. Colour: Black.
Contacts:	Phosphor bronze hard temper with gold thickness options (6µ", 15µ", 30µ", 50µ") over 50µ" minimum nickel on contact mating area. 100µ" minimum matte tin plating on soldering tail
Shield:	Copper alloy; nickel plated with pure tin dipped tail
LED:	Pure tin plating on LED tail

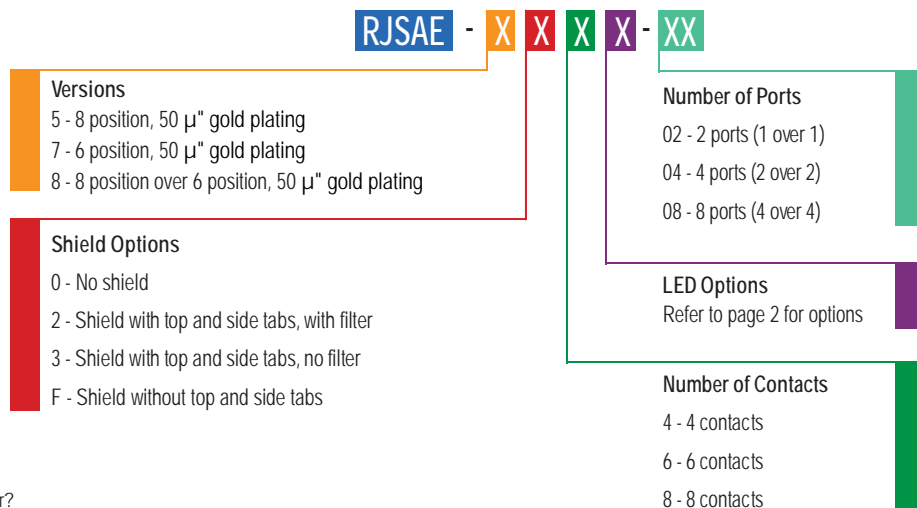
### Mechanical

Mating Connector Insertion Force:	5 lbs. maximum
Mating Connector Pull Retention Force:	20 lbs. minimum
Durability:	750 mating & unmating cycles
Recommended Soldering Temperature:	Wave soldering peaked at 260°C for 5 seconds maximum
Operating Temperature:	Connectors without LEDs are suitable for IR reflow -55°C to +85°C

### Electrical

Contact Resistance:	20 mΩ maximum
Insulation Resistance:	500 MΩ minimum at 500V DC for 2 minutes maximum
Current Rating:	1.5 Amps
Voltage Rating:	125 Volts AC
DWV	1000 VAC, 60 Hz. 1 minute
LED Forward DC Current:	20mA typical
LED Forward Voltage:	1.9 Volts maximum @ 2mA (for single colours) 2.6 Volts maximum @ 20mA (for Bi-colours)
LED Reverse Voltage:	5 Volts minimum
LED Light Intensity:	0.4 to 1.5 mcd @ 2mA (for single colours) 0.5 mcd minimum @ 2mA (for Bi-colours)
LED Wave Length:	Yellow: 587 ± 7 nm measured @ 20mA Green: 565 ± 6 nm measured @ 20mA Red: 625 ± 5 nm measured @ 20mA
UL File # :	E135615
CSA File # :	150190

## Ordering Information



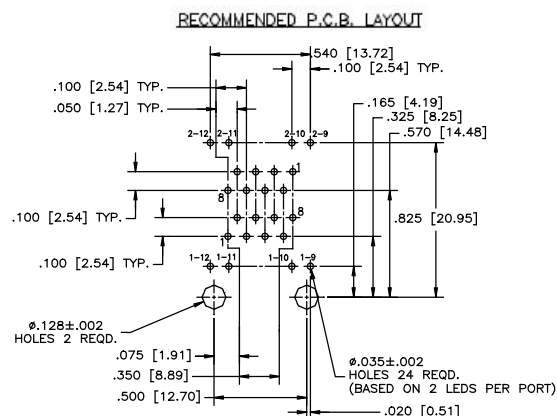
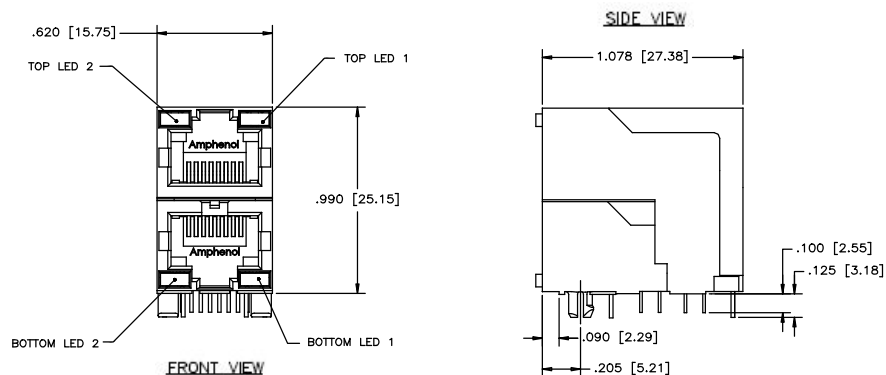
Didn't find what you were looking for?  
Please contact [sales@amphenolcanada.com](mailto:sales@amphenolcanada.com) and let us know what you need.

## 2, 4, AND 8 PORTS WITH LEDS AND SHIELD OPTIONS

## Single Port

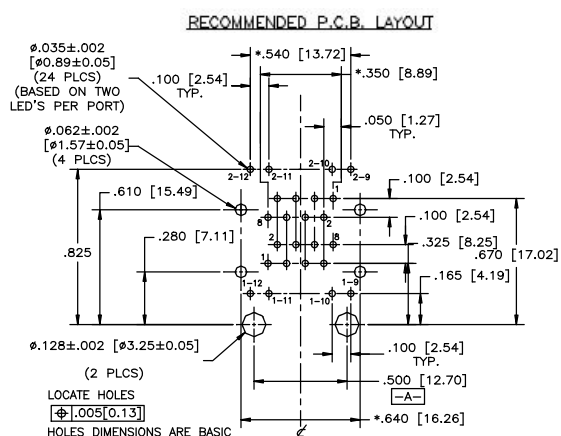
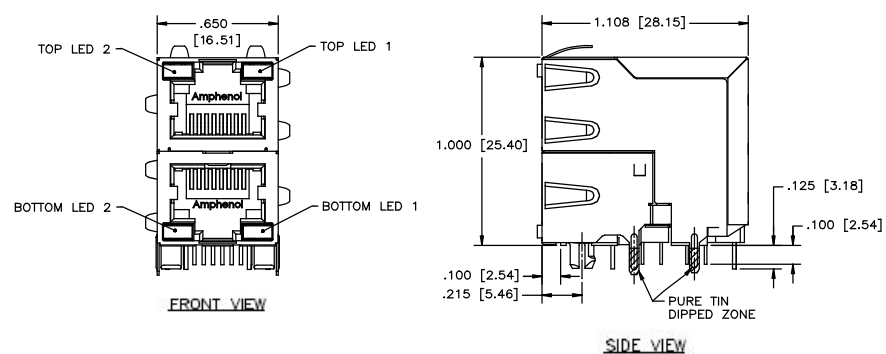
## Non-Shielded

RJSAE-508X-02



RJSAE-538X-02

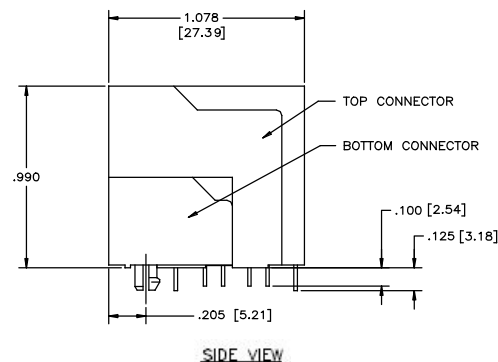
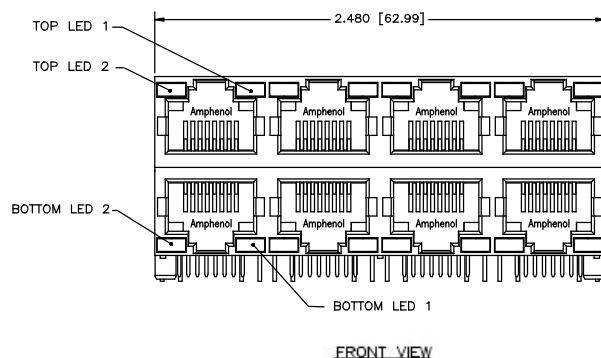
## Shielded



## Multi Port

## Non-Shielded

RJSAE-508X-08



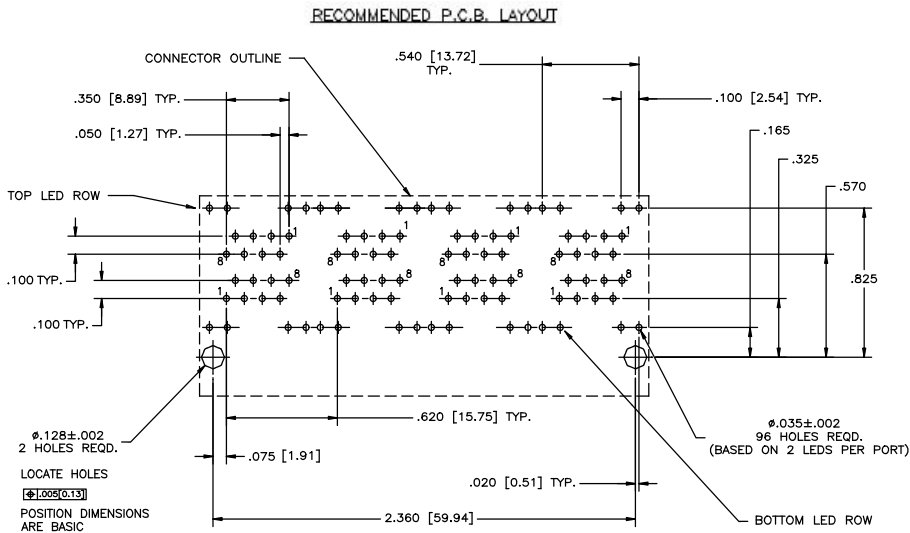
# RJSAE SERIES

2, 4, AND 8 PORTS WITH LEDS AND SHIELD OPTIONS

## Multi Port

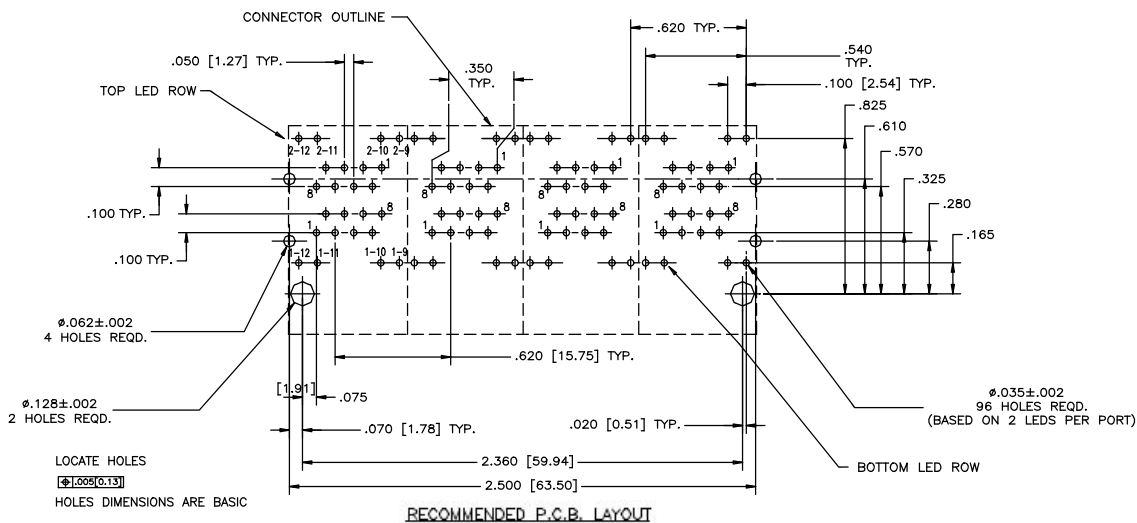
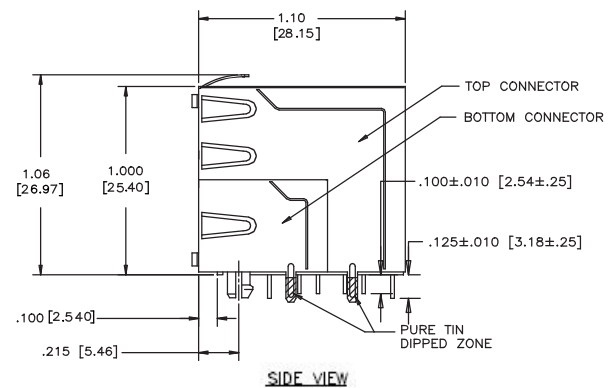
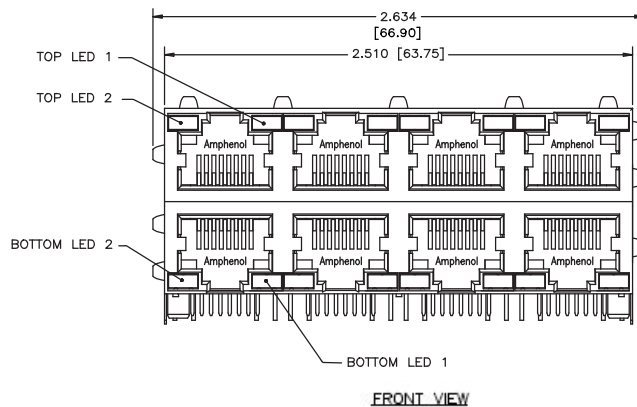
### Non-Shielded

RJSAE-508X-08



### Shielded

RJSAE-538X-08



# RJSNE SERIES

4 OVER 4 PORTS WITH LED AND SHIELD OPTIONS



## 4 Over 4 Ports with LED and Shield Options

The RJSNE series is a stacked connector that offers LED options for link activity and network verification. It is available with or without shielding. The RJSNE series also includes an unique inner shield device to reduce the cross talk between top and bottom ports.

## Specifications

### Material

Insulator:	Engineering thermoplastic. Complies with UL94V-0. Colour: Black.
Contacts:	Phosphor bronze hard temper with gold thickness options (6 $\mu$ ", 15 $\mu$ ", 30 $\mu$ ", 50 $\mu$ ") over 50 $\mu$ " minimum nickel on contact mating area. 100 $\mu$ " minimum matte tin plating on soldering tail.
Shield:	Copper alloy, nickel plated with tin dipped tail or stainless steel with tin dipped tail.
LED:	Pure tin plating on LED tail.

### Mechanical

Mating Connector	
Insertion Force:	5 lbs. maximum
Mating Connector Pull	
Retention Force:	20 lbs. minimum
Durability:	750 mating & unmating cycles
Recommended Soldering	Wave soldering peaked at 260°C for 5 seconds maximum
Temperature:	

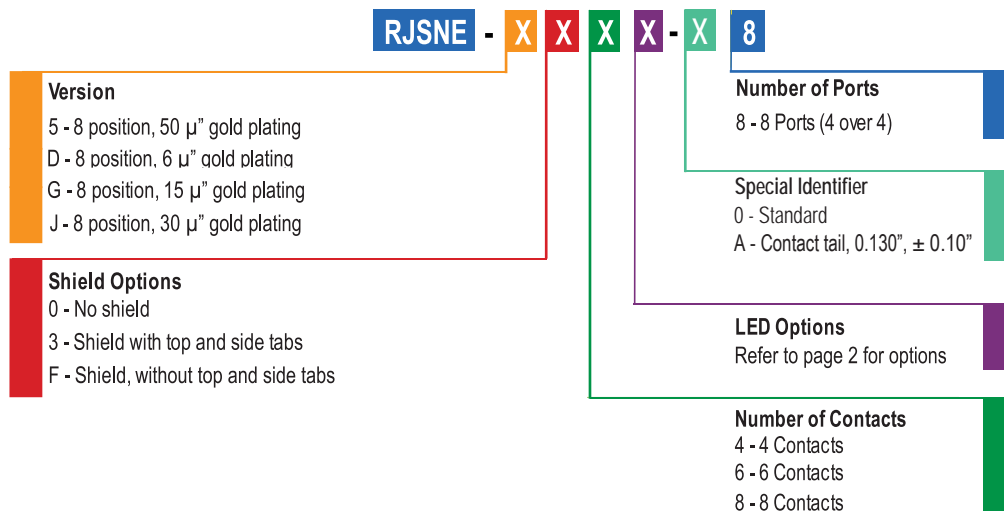
*Connectors without LEDs are suitable for IR reflow*

Operating Temperature: -55°C to +85°C

### Electrical

Contact Resistance:	20 m $\Omega$ maximum
Insulation Resistance:	500 M $\Omega$ minimum at 500V DC for 2 minutes maximum
Current Rating:	1.5 Amps
Voltage Rating:	125 Volts AC
DWV:	1000 VAC, 60 Hz. 1 minute
LED Forward DC Current:	20mA typical
LED Forward Voltage:	1.9 Volts maximum @ 2mA (for single colours) 2.6 Volts maximum @ 2mA (for bi-colours)
LED Reverse Voltage:	5 Volts minimum
LED Light Intensity:	0.4 to 1.5 mcd @ 2mA (for single colours) 0.5 mcd minimum @ 2mA (for bi-colours)
LED Wave Length:	Yellow: 587 $\pm$ 7 nm measured @ 20mA Green: 565 $\pm$ 6 nm measured @ 20mA Red: 625 $\pm$ 5 nm measured @ 20mA
UL File # :	E135615

## Ordering Information



Didn't find what you were looking for?

Please contact [sales@amphenolcanada.com](mailto:sales@amphenolcanada.com) and let us know what you need.

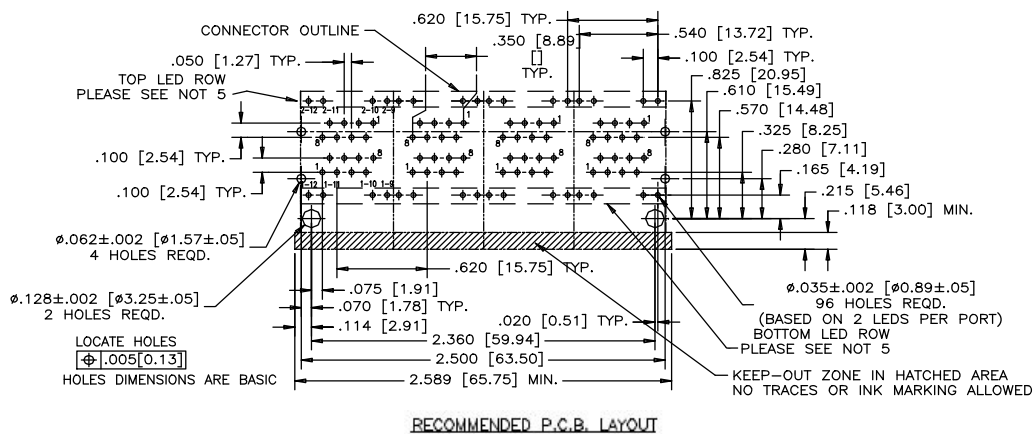
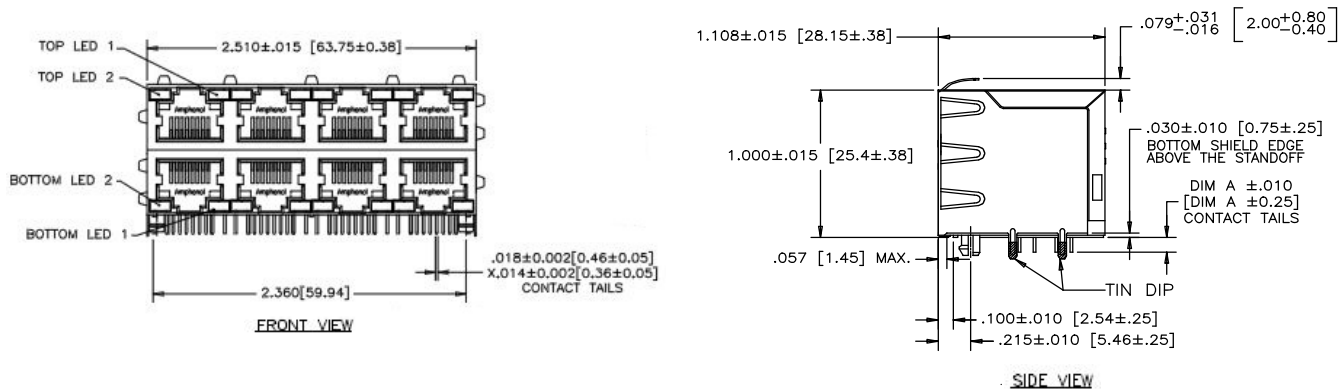
# RJSNE SERIES

4 OVER 4 PORTS WITH LED AND SHIELD OPTIONS

## Multi Port

RJSNE-538X-X8

## Shielded



## Notes



# RJE72 SERIES

RIGHT ANGLED, RECESSED, LOW PROFILE

## Right Angled, Recessed, Low Profile

The RJE72 of Modular Jacks meet category CAT5e performance per EIA-568-C.2. It supports Gigabit Ethernet Protocols. Shielding available for increased EMI performance and LEDs for link activity and network speed verification



## Specifications

### Material

Insulator:	High temperature thermoplastic; complies with UL 94V-0. Colour: Black.
Contacts:	Phosphor bronze hard temper with gold thickness options (6µ", 15µ", 30µ", 50µ") over 50µ" minimum nickel on contact mating area. 100µ" minimum matte tin on solder tails.
Shield:	Stainless steel with tin dipped tails
LED:	Steel with tin plating on LED tails. Epoxy lens.

### Mechanical

Mating Connector	
Insertion Force:	5 lbs. maximum
Mating Connector Pull	
Retention Force:	20 lbs. minimum
Durability:	750 mating & unmating cycles
Recommended Soldering Temperature:	IR reflow peaked at 260°C for 5 to 8 seconds

*IR reflow is not recommended for connectors with LEDs*

Operating Temperature:	-40°C to +85°C
------------------------	----------------

### Electrical

Contact Resistance:	20 mΩ maximum
Insulation Resistance:	500 MΩ minimum at 500V DC for 2 minutes maximum
Current Rating:	1.25 Amps
Voltage Rating:	125 Volts AC
DWV	1000 VAC, 60 Hz. 1 minute
LED Forward DC Current:	20mA typical
LED Forward Voltage:	1.9 Volts maximum @ 2mA (for single colours)
LED Reverse Voltage:	5 Volts minimum
LED Light Intensity:	0.4 to 1.5 mcd @ 2mA (for single colours)
LED Wave Length:	Yellow: 587 ± 7 nm measured @ 20mA Green: 565 ± 6 nm measured @ 20mA Red: 625 ± 5 nm measured @ 20mA

UL File # :	E135615
-------------	---------

## Ordering Information

RJE72 - X 8 8 - 1 X X X - X	
Number of Ports 1 - 1 Port 4 - 4 Ports	Packaging Blank - Tray T - Tape and reel
Number of Positions 8 - 8 positions	Modifier 1 - 3.18 Tail length 2 - 2.27 Tail length 3 - 2.16 Tail length
Number of Contacts 8 - 8 contacts	LED Options Refer to page 2 for options
Shielding Options 1 - Full shield	Contact Plating 1 - 6 µ" gold plating 2 - 15 µ" gold plating 3 - 30 µ" gold plating 4 - 50 µ" gold plating

Didn't find what you were looking for?

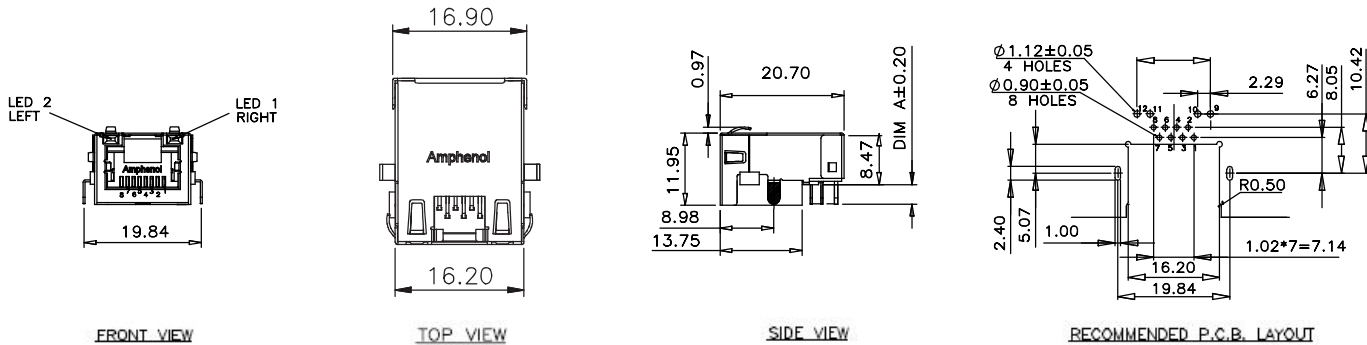
Please contact [sales@amphenolcanada.com](mailto:sales@amphenolcanada.com) and let us know what you need.



### RIGHT ANGLED, RECESSED, LOW PROFILE

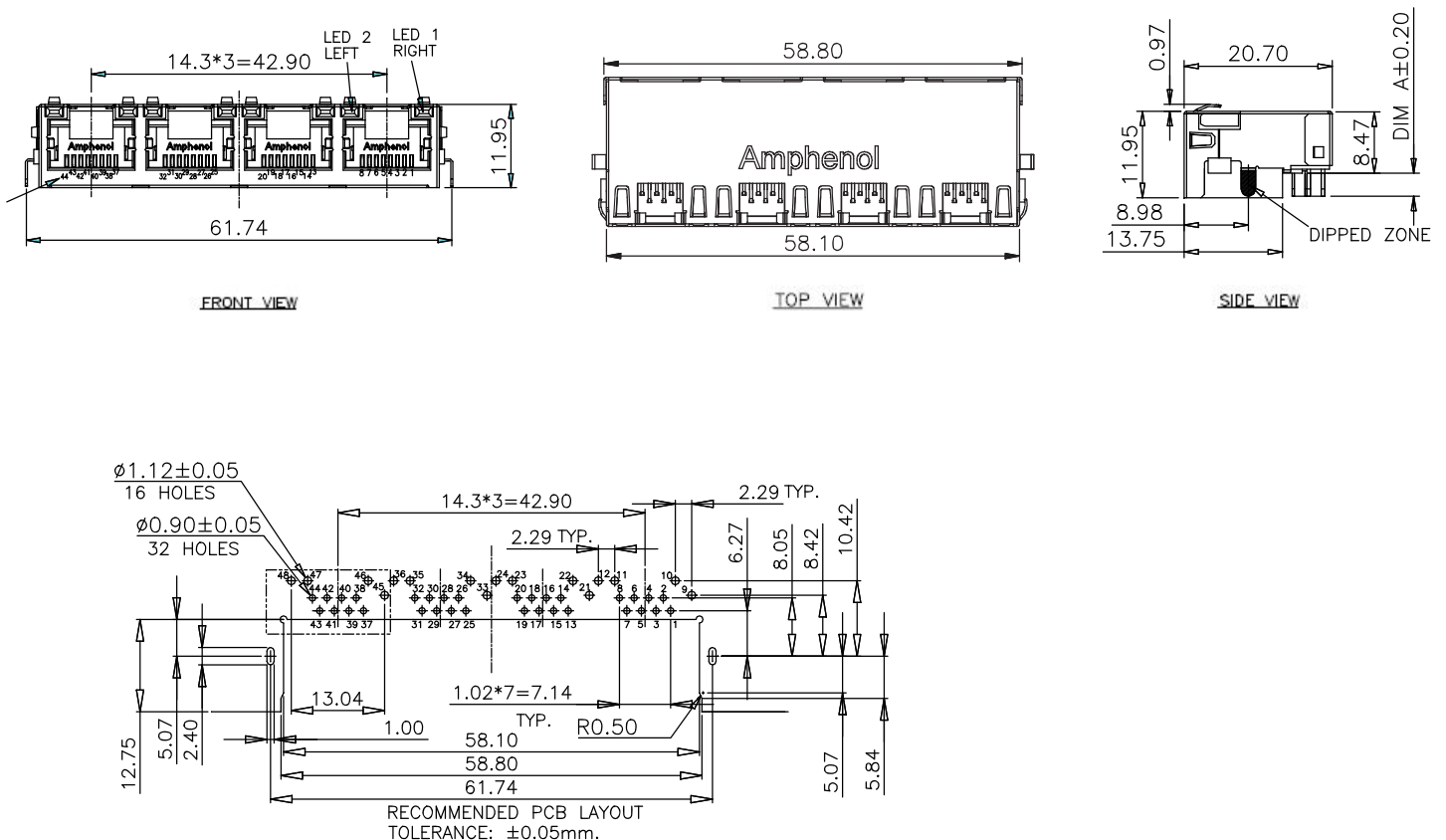
RJE72-188-14X1

## Shielded



**RJE72-488-14X1**

## Shielded



# RJE71 SERIES

RIGHT ANGLED, RECESSED, LOW PROFILE

## Right Angled, Recessed, Low Profile

The RJE71 series of Modular Jacks meet category CAT6 performance per EIA-568-C.2. It supports Gigabit Ethernet Protocols and 10G Ethernet over lengths up to 50M. Shielding available for increased EMI performance and LEDs for link activity and network speed verification



## Specifications

### Material

Insulator:	High temperature thermoplastic; complies with UL 94V-0. Colour: Black.
Contacts:	Phosphor bronze hard temper with gold thickness options (6µ", 15µ", 30µ", 50µ") over 50µ" minimum nickel on contact mating area. 100µ" minimum matte tin on solder tails
Shield:	Stainless steel with tin dipped tails
LED:	Tin plating on LED tails

### Mechanical

Mating Connector Insertion Force:	5 lbs. maximum
Mating Connector Pull	
Retention Force:	20 lbs. minimum
Durability:	750 mating & unmating cycles
Recommended Soldering Temperature:	IR reflow peaked at 260°C for 5 to 8 seconds

*IR reflow is not recommended for connectors with LEDs*

Operating Temperature:	-40°C to +85°C
------------------------	----------------

### Electrical

Contact Resistance:	20 mΩ maximum
Insulation Resistance:	500 MΩ minimum at 500V DC for 2 mins max.
Current Rating:	1.25 Amps
Voltage Rating:	125 Volts AC
DWV:	1000 VAC, 60 Hz. 1 minute
LED Forward DC Current:	20mA typical
LED Forward Voltage:	1.9 Volts maximum @ 2mA (for single colours) 2.6 Volts maximum @ 20mA (for Bi-colours)
LED Reverse Voltage:	5 Volts minimum
LED Light Intensity:	0.4 to 1.5 mcd @ 2mA (for single colours) 0.5 mcd minimum @ 2mA (for Bi-colours)
LED Wave Length:	Yellow: 587 ± 7 nm measured @ 20mA Green: 565 ± 6 nm measured @ 20mA Red: 625 ± 5 nm measured @ 20mA

## Ordering Information

RJE71 - X 8 8 - 1 X X X X	
<b>Number of Ports</b> 1 - 1 Port 4 - 4 Port	<b>Packaging</b> Blank - Tray T - Tape and reel
<b>Number of Positions</b> 8 - 8 positions	<b>Modifier</b> 1 - 3.18 Tail length 2 - 2.27 Tail length 3 - 2.16 Tail length
<b>Number of Contacts</b> 8 - 8 contacts	<b>LED Options</b> Refer to page 2 for options
<b>Shielding Options</b> 1 - Full shield	<b>Contact Plating</b> 1 - 6 µ" gold plating 2 - 15 µ" gold plating 3 - 30 µ" gold plating 4 - 50 µ" gold plating

Didn't find what you were looking for?  
Please contact [sales@amphenolcanada.com](mailto:sales@amphenolcanada.com) and let us know what you need.

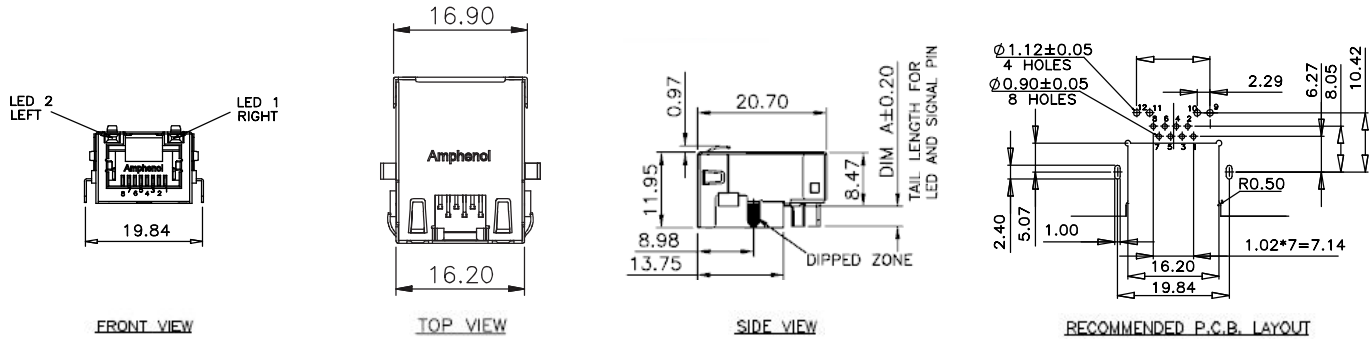
# RJE71 SERIES

RIGHT ANGLED, RECESSED, LOW PROFILE

## Single Port

RJE71-188-141X

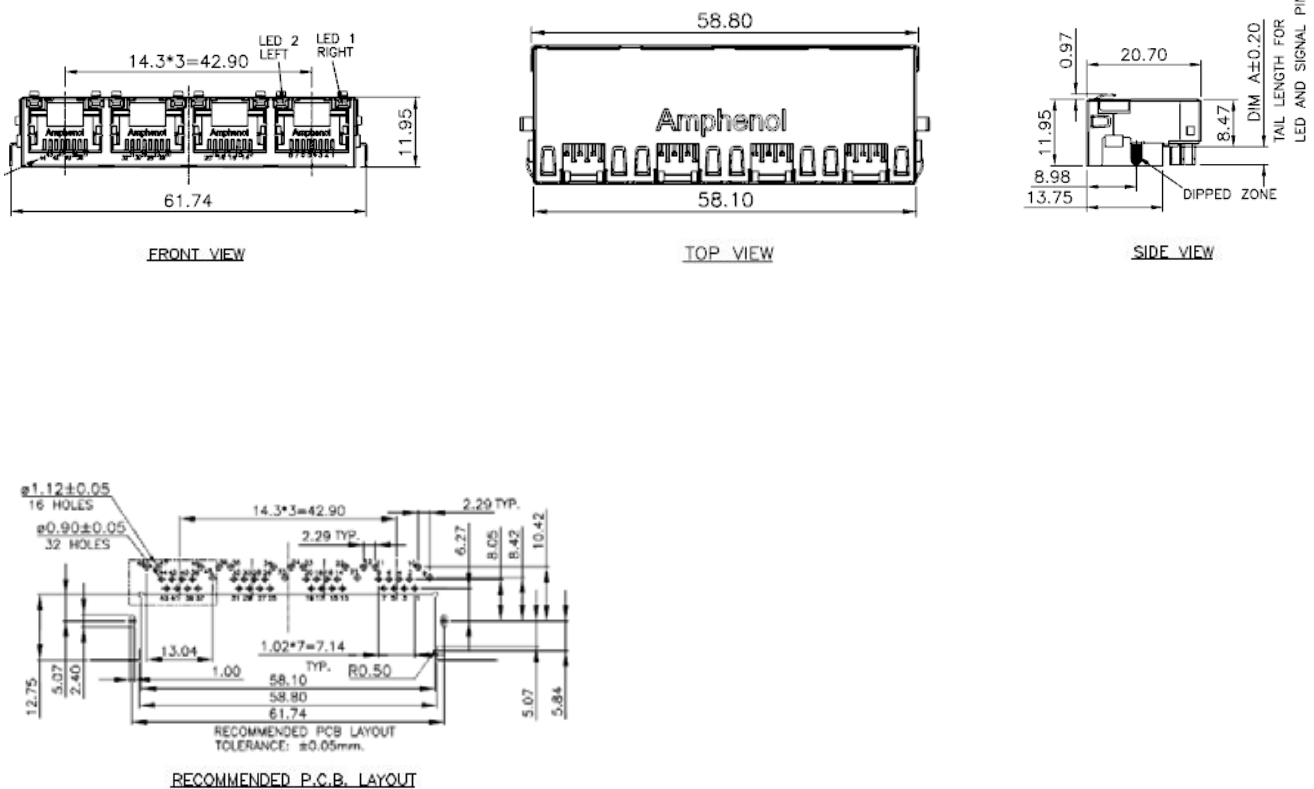
Shielded



## Multi Port

RJE71-488-1XXX

Shielded



# RJE17 SERIES

RJ45 COUPLER

## RJ45 Coupler

The RJE17 coupler provides connections through barriers such as equipment covers and panels. They are locked into place with a panel latch for secure mounting. Available in CAT3 and CAT5e performance. The added shielding provides optimal EMI protection.



## Specifications

### Material

Insulator:	Engineering thermoplastic. Complies with UL 94V-0. Colour: Black.
Contacts:	Phosphor bronze hard temper with gold thickness options (30µ", 50µ") over 50µ" minimum nickel on contact mating area
Shield:	Stainless steel

### Electrical

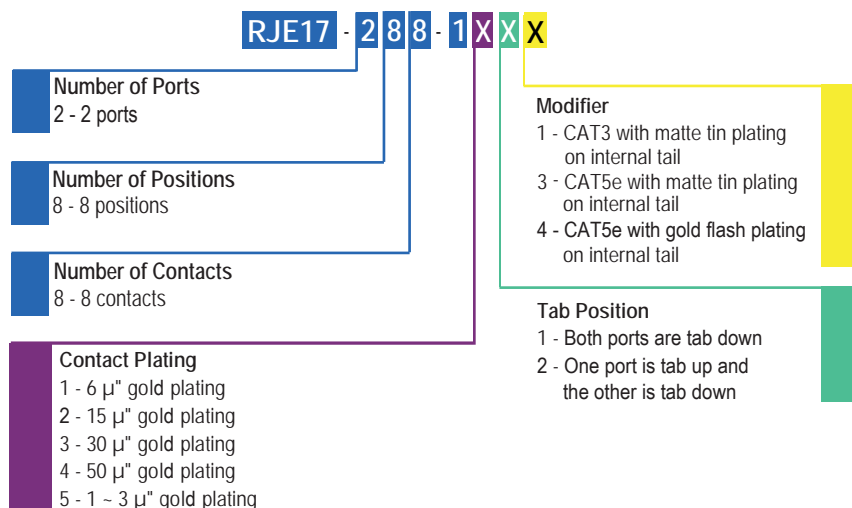
Contact Resistance:	20 mΩ maximum
Insulation Resistance:	500 MΩ minimum at 500V DC for 2 minutes max.
Current Rating:	1.5 Amps

Voltage Rating:	125 Volts AC
DWV	1000 VAC, 60 Hz. 1 minute

### Mechanical

Mating Connector Insertion Force:	5 lbs. maximum
Mating Connector Pull Retention Force:	20 lbs. minimum
Durability:	750 mating & unmating cycles
Operating Temperature:	-40°C to +70°C

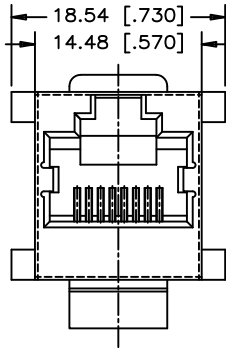
## Ordering Information



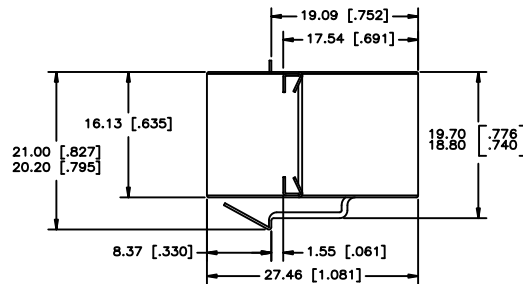
Didn't find what you were looking for?  
Please contact [sales@amphenolcanada.com](mailto:sales@amphenolcanada.com) and let us know what you need.

## Single Port

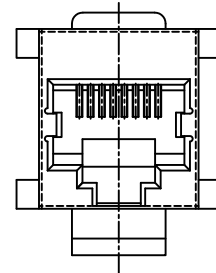
RJE17-288-1121



FRONT VIEW



SIDE VIEW



REAR VIEW

## Notes

# NOTES

# NOTES

The Amphenol logo consists of the word "Amphenol" in a bold, sans-serif font, followed by a registered trademark symbol (®).

**Amphenol®**

*Now you're connected!*

Location:  
605 Milner Avenue  
Toronto, Ontario  
Canada, M1B 5X6

Website: [www.amphenolcanada.com](http://www.amphenolcanada.com)

Telephone: (416) 754-5656

Fax: (416) 754-8668

Email: [sales@amphenolcanada.com](mailto:sales@amphenolcanada.com)

All specifications are subject to change without notice.