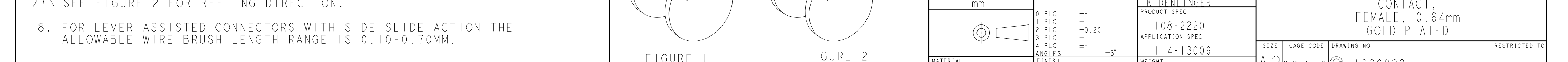
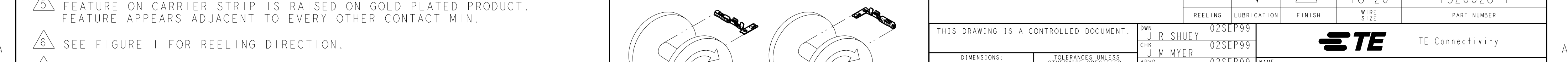
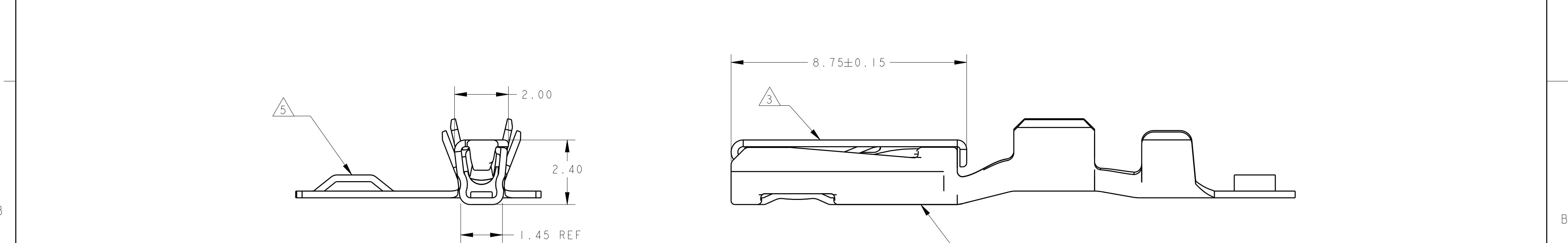
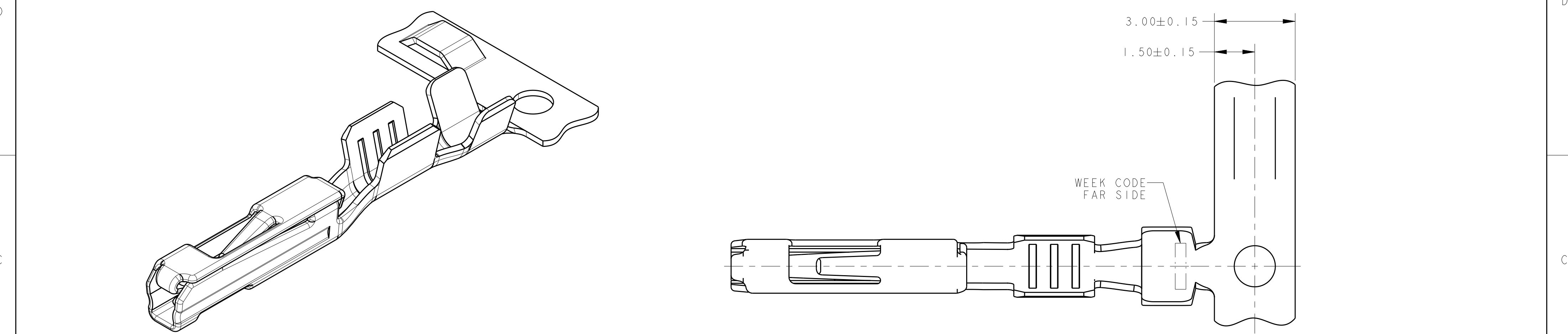
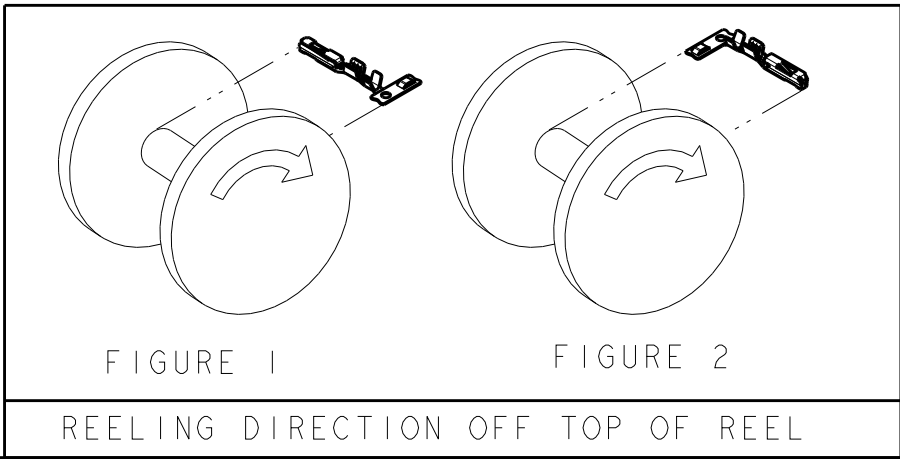


REVISIONS					
P	LTR	DESCRIPTION	DATE	DWN	APVD
	C2	REVISED PER ECO-11-005030	12MAR2011	RK	HMR
	C3	REVISED PER ECO-13-016087	14OCT2013	DD	MB



1. FINISH: PLATED 0.00076 MIN THICK GOLD IN MATING AREA WITH 0.0025 MIN THICK TIN IN WIRE CRIMP AREA, ALL OVER 0.002 MIN THICK NICKEL,
2. FINISH: PLATED 0.00076 MIN THICK GOLD IN MATING AREA, PLATED 0.00038 MIN THICK GOLD IN SHUNT CONTACT PLATING AREA WITH 0.0025 MIN THICK TIN IN WIRE CRIMP AREA, ALL OVER 0.002 MIN THICK NICKEL.
3. GOLD FLASH THIS AREA PROVIDED FOR VISUAL INDICATION THAT TERMINAL IS GOLD PLATED.
4. PART LUBRICATED WITH CHEMLUBE 1102
5. FEATURE ON CARRIER STRIP IS RAISED ON GOLD PLATED PRODUCT. FEATURE APPEARS ADJACENT TO EVERY OTHER CONTACT MIN.
6. SEE FIGURE 1 FOR REELING DIRECTION.
7. SEE FIGURE 2 FOR REELING DIRECTION.
8. FOR LEVER ASSISTED CONNECTORS WITH SIDE SLIDE ACTION THE ALLOWABLE WIRE BRUSH LENGTH RANGE IS 0.10-0.70MM.



THIS DRAWING IS A CONTROLLED DOCUMENT.		DWN J. R. SHUEY 02SEP99	TE Connectivity		
DIMENSIONS: mm		CHK J. M. MYER 02SEP99			
TOLERANCES UNLESS OTHERWISE SPECIFIED:		APVD K. DENLINGER 02SEP99	NAME CONTACT, FEMALE, 0.64mm GOLD PLATED		
0 PLC ± 1 PLC ± 2 PLC ±0.20 3 PLC ± 4 PLC ± ANGLES ±3° FINISH		PRODUCT SPEC 108-2220 APPLICATION SPEC 114-13006 WEIGHT -	SIZE A200779	CAGE CODE C-1326028	RESTRICTED TO -
MATERIAL 0.25 THK COPPER ALLOY		SEE TABLE	Customer Drawing		
			SCALE 10:1	SHEET OF	REV C3