



Search Results

Evaluate

- FAQ's
- Line Cards
- PDF-Copper Cabli ..

Design a Solution

- Specification Sheets
- PDF-TX5500 Categ ..

How to Buy

- Bill of Material
- Favorite Products List
- Locate Distributor

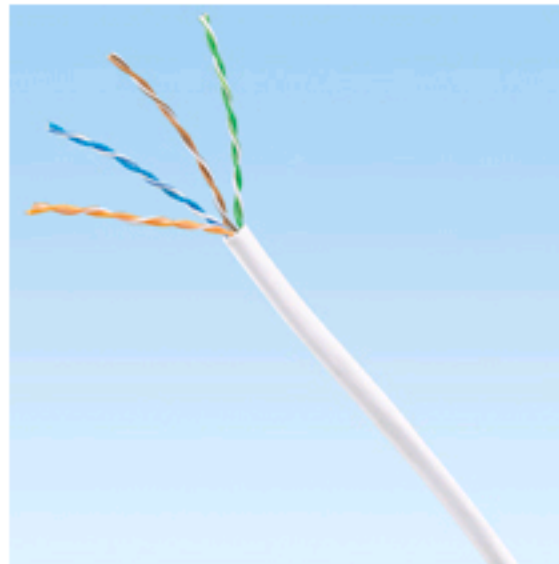
Home > Product On-Line Catalog > Search Results >

Current refinements (click to remove) Search Tips

Text Search: 'PUR5504RD-UY'

Your search criteria matched only one product, shown below

PUR5504RD-UY



- Exceeds requirements of ANSI/TIA-568-C.2 Category 5e and ISO 11801 2nd Edition Class D channel standards
- Exceeds requirements of ANSI/TIA-568-C.2 and IEC 61156-5 Category 5e component standards
- Third party tested to Category 5e channel compliance
- Meets requirements of IEEE 802.3af and IEEE 802.3at for PoE applications
- Cable diameter: 0.225 in. (5.7mm) nominal
- Installation temperature range: 32°F to 122°F (0°C to 50°C)
- Operating temperature range: 14°F to 140°F (-10°C to 60°C)
- Channel characterized to 450 MHz, 350 MHz above the standard
- Descending length cable markings enable easy identification of remaining cable which reduces installation time and cable scrap
- Cable supplied in an easy payout box
- **Available in North America only**

▪ Part Number	PUR5504RD-UY
▪ RoHS Compliancy Status	Compliant
▪ Part Description	Enhanced Category 5e, riser (CMR), 4-pair, UTP copper cable. Copper conductors are 24 AWG construction with polyolefin insulation. Conductors are twisted in pairs and protected by a flame-retardant PVC jacket.
▪ Product Type	Copper Cable
▪ Color	Red
▪ Length (ft.)	1,000
▪ Cable Color	Red
▪ Cable Type	UTP
▪ CE Compliant	No
▪ Flammability Rating	CMR
▪ Jacket Material	Flame-retardant PVC
▪ No. of Pairs	4
▪ Performance Level	Category 5e/Class D
▪ Pricing Description	Copper Cable, Cat 5e, 4-Pair, 24 AWG, UTP, CMR, Red, 1000 Feet/305m
▪ Min. Order UOM	FT
▪ Min. Order Qty.	13000
▪ BOM Qty. (# of Pkgs.)	<input type="text" value="0"/>
▪ Add to Favorite Product List	

Please [register](#) to utilize the 'Bill of Materials', 'Submit Quotes' and 'Favorite Product List' features.