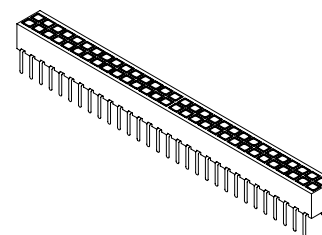
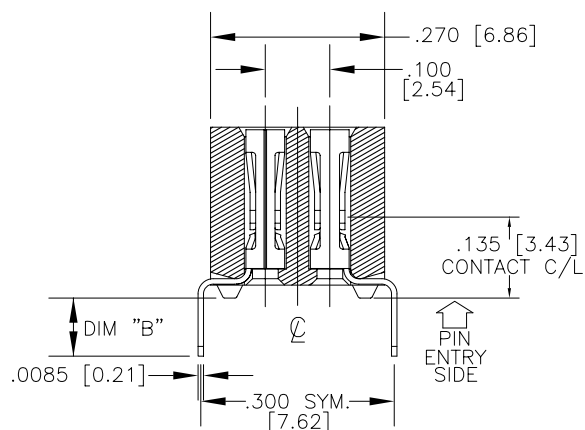
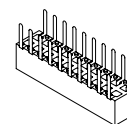
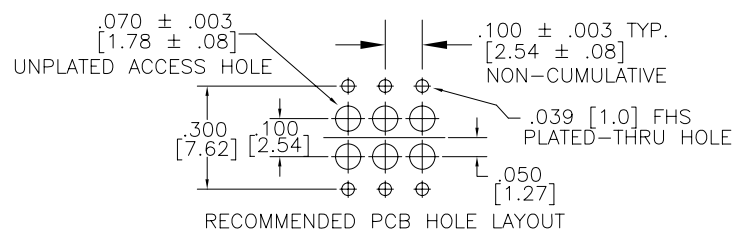
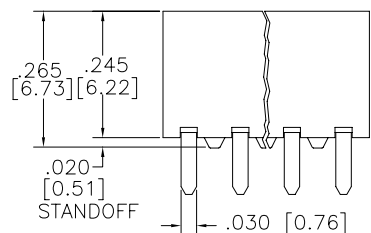
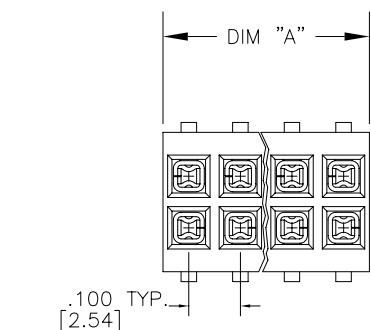


PRODUCT NUMBER  
SEE TABLE



#### SPECIFICATIONS—MECHANICAL:

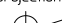


- \* INSERTION FORCE — 150 G/CONTACT MAX
- \* WITHDRAWAL FORCE: 20 G/CONTACT MIN
- \* CONTACT RETENTION: 900 G/CONTACT MIN
- \* CONTACT NORMAL FORCE: 120 G/CONTACT MIN
- \* DURABILITY — 200 CYCLES
- \* OPERATING TEMPERATURE: -55°C TO +85°C

#### SPECIFICATIONS—ELECTRICAL:

- \* CURRENT RATING(CONTINUOUS): 1 AMP/CONTACT MAX
- \* CONTACT RESISTANCE: 20 MILLIOHMS MAX
- \* INSULATION RESISTANCE: 5000 MEGOHMS MIN
- \* DIELECTRIC WITHSTAND VOLTAGE: 1000V RMS

#### FEATURES:

- \* 6 TO 80 CONTACTS — BOTTOM ENTRY
- \* BIFURCATED CONTACT DESIGN (N/S ORIENTATION)
- \* SELECTIVELY PLATED GOLD CONTACT
- \* Ni UNDERPLATE SUITABLE FOR NO-CLEAN OPERATION
- \* SnPb OR Sn PLATED CONTACT LEADS FOR SOLDERABILITY
- \* .115/2.92 TAILS INTENDED FOR USE ON .062/1.57 THICK BOARDS.
- \* .145/3.68 TAILS INTENDED FOR USE ON .093/2.36 THICK BOARDS.
- \* INTENDED FOR USE ON .025/0.64 SQUARE PINS

mat'l. code				surface		tolerance		projection		product family			
NOTE 1				ASME Y14.5		ASME Y14.5				NORCON			
ltr	ecr no	dr	date	tolerances unless otherwise specified						title			
B	V05-0106	HTB	2005-06-14	angles		linear				PCB MOUNTED RECEPTACLES			
C	V06-0137	HTB	2006-02-09			XXX ±.005/XX±.13		INCH/MM		CBR30 DR .100" [2.54] GRID			
D	V06-0663	JRV	2006-07-12	0° ±0.5°				scale N.T.S.					
E	V07-0477	HTB	2007-07-18	dr	T. BREWBAKER		2005-06-14			dwg no			
F	V07-0683	HTB	2007-11-16	engr	T. BREWBAKER		2005-06-14			sheet 1 of 2			
				chr	T. BREWBAKER		2005-06-14			56796			
				appd	T. BREWBAKER		2005-06-14			type			
sheet index		revision sheet		F 1	F 2								

PRODUCT NUMBER	ENG. CODE	DESCRIPTION	DIM "A"	DIM "B"	NOTES
A0346200	CBR30B060F1	60 POS.(2x30)	3.000/76.20	.115/2.92	—
A0346200LF	—	60 POS.(2x30)	3.000/76.20	.115/2.92	3 & 4
A0351439	CBR30B010F1	10 POS.(2x5)	.500/12.70	.115/2.92	OBS.
A0351439LF	—	10 POS.(2x5)	.500/12.70	.115/2.92	3 & 4
A0352305	CBR30B070F1	70 POS.(2x35)	3.500/88.90	.115/2.92	OBS.
A0353060	CBR30B006F1	6 POS.(2x3)	.300/7.62	.115/2.92	OBS.
A0353061	CBR30B014F1	14 POS.(2x7)	.700/17.78	.115/2.92	OBS.
A0353062	CBR30B016F1	16 POS.(2x8)	.800/20.32	.115/2.92	OBS.
A0354730	CBR30B080F1	80 POS.(2x40)	4.000/101.60	.115/2.92	—
A0354730LF	—	80 POS.(2x40)	4.000/101.60	.115/2.92	3 & 4
A0360650	CBR30B040F1	40 POS.(2x20)	2.000/50.80	.115/2.92	OBS.
A0369140	CBR30B020F1	20 POS.(2x10)	1.000/25.40	.115/2.92	OBS.
A0377602	CBR30B030F1	30 POS.(2x15)	1.500/38.10	.115/2.92	OBS.
A0378890	CBR30B050F1	50 POS.(2x25)	2.500/63.50	.115/2.92	OBS.
A0382412	CBR30B036F1	36 POS.(2x18)	1.800/45.72	.115/2.92	OBS.
A0636185	CBR30B034F1	34 POS.(2x17)	1.700/43.18	.115/2.92	—
A0636185LF	—	34 POS.(2x17)	1.700/43.18	.115/2.92	3 & 4
A0637408	CBR30B006F4	6 POS.(2x3)	.300/7.62	.145/3.68	—
A0637408LF	—	6 POS.(2x3)	.300/7.62	.145/3.68	3 & 4
A0637409	CBR30B040F3	40 POS.(2x20)	2.000/50.80	.145/3.68	—
A0637409LF	—	40 POS.(2x20)	2.000/50.80	.145/3.68	3 & 4
A0637410	CBR30B060F3	60 POS.(2x30)	3.000/76.20	.145/3.68	OBS.
A0637602	CBR30B010F3	10 POS.(2x5)	.500/12.70	.145/3.68	OBS.
A0637617	CBR30B014F2	14 POS.(2x7)	.700/17.78	.145/3.68	OBS.
A0637625	CBR30B016F2	16 POS.(2x8)	.800/20.32	.145/3.68	OBS.
A0637626	CBR30B020F2	20 POS.(2x10)	1.000/25.40	.145/3.68	OBS.
A0637627	CBR30B030F3	30 POS.(2x15)	1.500/38.10	.145/3.68	OBS.
A0637628	CBR30B036F2	36 POS.(2x18)	1.800/45.72	.145/3.68	OBS.
A0637628LF	—	36 POS.(2x18)	1.800/45.72	.145/3.68	3 & 4
A0637629	CBR30B080F2	80 POS.(2x40)	4.000/101.60	.145/3.68	OBS.

## NOTES:

- HOUSING MATERIAL: PBT, GLASS FIBER REINFORCED, FLAME RETARDANT PER UL 94V-0, COLOR: BLACK.  
TERMINAL MATERIAL: CA510 ALLOY  
CONTACT FINISH: 50u" / 1.27u Au  
CONTACT UNDERPLATE: 100u" / 2.54u Ni  
SOLDER TAIL FINISH: 100u" / 2.54u SnPb  
LF SOLDER TAIL FINISH: 100u" / 2.54u Sn  
OVERALL UNDERPLATE: 20u" / 0.51u Ni
- PACKAGED IN ANTI-STATIC TUBES.
- PART NUMBERS WITH AN LF SUFFIX MEET EUROPEAN UNION DIRECTIVES AND OTHER COUNTRY REGULATIONS AS DESCRIBED IN GS-22-008.
- THE HOUSING WILL WITHSTAND EXPOSURE TO 260° C PEAK TEMPERATURE FOR 10 SECONDS IN A WAVE SOLDER APPLICATION WITH A .062" [1.57mm] THICK CIRCUIT BOARD.

mat'l. code				surface		tolerance		projection		product family	
NOTE 1				ASME Y14.5		ASME Y14.5				NORCON	
ltr	ecr	no	dr	date		tolerances unless otherwise specified				title	
F						angles				PCB MOUNTED RECEPTACLES	
						0° ±0.5°				CBR30 DR .100" [2.54] GRID	
						dr		T. BREWBAKER		2005-06-14	
						engr		T. BREWBAKER		2005-06-14	
						chr		T. BREWBAKER		2005-06-14	
						appd		T. BREWBAKER		2005-06-14	
sheet index		revision sheet									
										dwg no 56796 sheet 2 of 2 size A4 type CUSTOMER Drawing	