

4

3

2

1

THIS DRAWING IS UNPUBLISHED.

RELEASED FOR PUBLICATION

©

COPYRIGHT

-

BY TYCO ELECTRONICS CORPORATION.

ALL RIGHTS RESERVED.

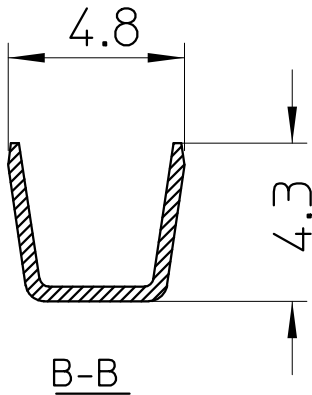
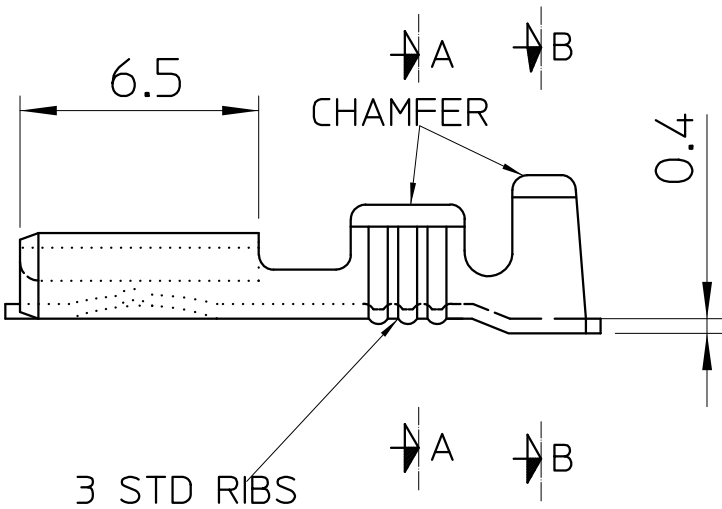
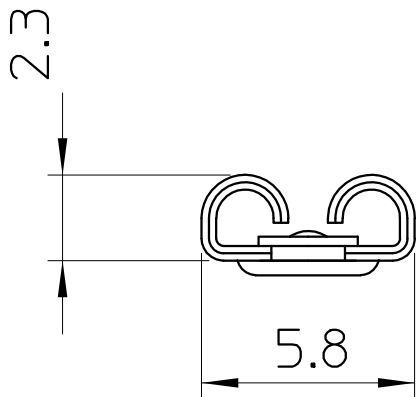
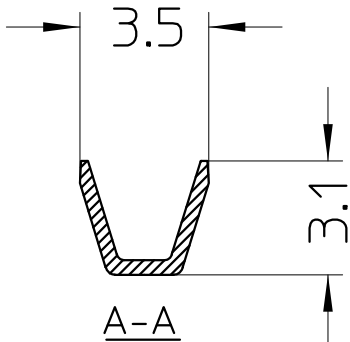
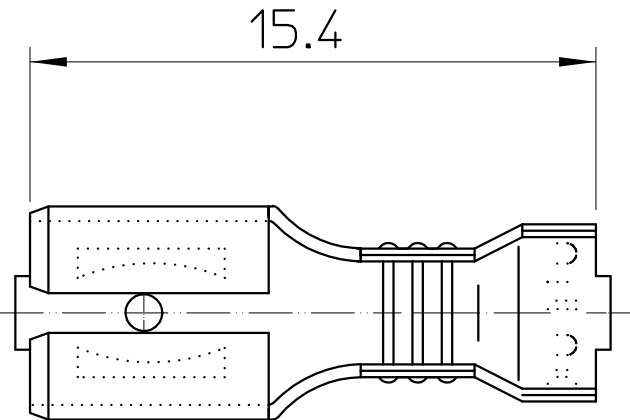
LOC	DIST	REVISIONS				
		P	LTR	DESCRIPTION	DATE	APVD
U	-	-	-	-	-	-

NOTES:

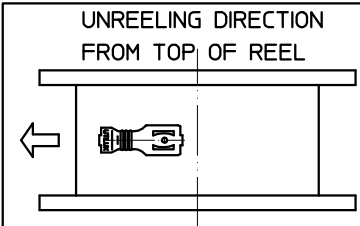
1. WIRE RANGE

CONDUCTOR: 0.4mm2 - 1.0mm2

INSULATION DIA: 3.2mm MAX.



THIS INFORMATION IS CONFIDENTIAL AND PROPRIETARY TO  
TYCO ELECTRONICS CORPORATION AND ITS WORLDWIDE  
SUBSIDIARIES AND AFFILIATES. IT MAY NOT BE DISCLOSED  
TO ANYONE OTHER THAN TYCO ELECTRONICS PERSONNEL  
WITHOUT WRITTEN AUTHORIZATION FROM TYCO ELECTRONICS  
CORPORATION, HARRISBURG, PENNSYLVANIA, USA.



THIS DRAWING IS A CONTROLLED DOCUMENT.	
ALL DIMENSIONS IN mm:	TOLERANCES UNLESS OTHERWISE SPECIFIED: DIMENSION (mm) TOLERANCE(±mm)
	LESS THAN 10 0.4
	OVER 10 TO 30 0.5
	OVER 30 TO 80 0.7
	OVER 80 TO 250 1.0
	ANGLES ±2°
MATERIAL	FINISH
-	-

BRASS PRE-TIN	RECEPTACLE H2590ET	1-1627099-3
NICKEL SILVER	RECEPTACLE H2590B	1-1627099-2
BRASS	RECEPTACLE H2590	1-1627099-0
MATERIAL No.	DESCRIPTION	PART No.
DWN: W.Riede 21.10.04	<b>tyco</b> Tyco Electronics Corporation <b>Electronics</b> AUSTRALIA	
CHK: H. Tthai 21.10.04		
APVD: W.Riede 21.10.04	NAME: RECEPTACLE, QC 4.8x0.5	
PRODUCT SPEC: -		
APPLICATION SPEC: -	SIZE	CAGE CODE
WEIGHT: -	A3	-
CUSTOMER DRAWING		DRAWING NO
SCALE 5:1		©- 1627099
SHEET 1 OF 1		RESTRICTED TO
REV 0		-