



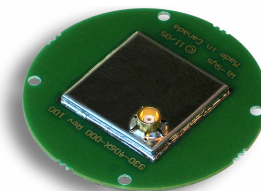
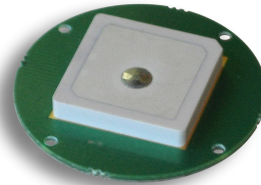
a time and place...
for everything

Wi-Sys Communications Inc.

WS4055/WS4065 Low Current OEM GPS Antenna with Built-in MCX Connector

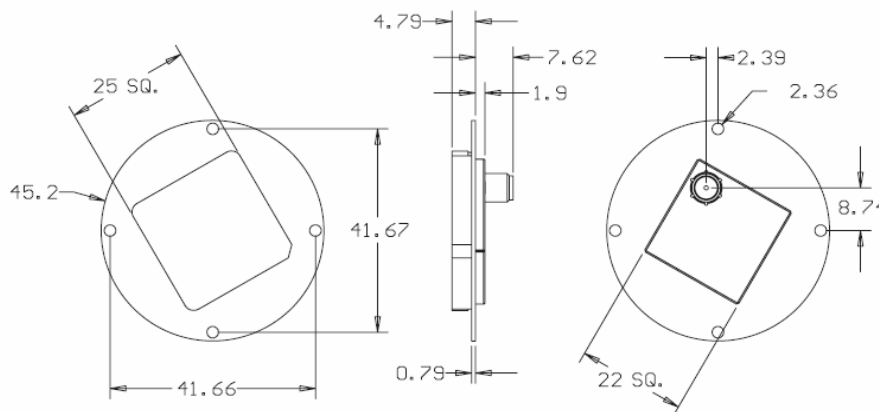
Applications:

- ◆ Portable Telematics
- ◆ Automotive Navigation Systems
- ◆ Fleet Management & Telematics Systems
- ◆ Marine Navigation Systems
- ◆ Asset Tracking Equipment
- ◆ Military Radios and In-Vehicle-Systems
- ◆ Law Enforcement Radios and In-Vehicle-Systems



The WS4055/WS4065 Low Current OEM GPS Antenna series with built-in connector is ideal for personal GPS applications including handheld computers and PDAs. With an industry leading 2mA current, and compact size, the WS4055/WS4065 series is perfectly suited for OEM applications. Performance is not sacrificed; the WS4055/WS4065 series features a custom designed ceramic patch element along with a low noise amplifier and SAW filter, enabling these antennas to provide a consistent, clear signal while minimizing loss-of-lock. Both models come equipped with a MCX connector. The WS4055 comes in a very compact 25 mm square package and the WS4065 comes with a 45.2 mm dia. mini-ground plane.

Dimensions in mm (WS4065)



Features:

- ◆ Extremely low current:
2mA @ 2.7V
- ◆ Extremely low noise figure:
1dB
- ◆ 18 dB gain @ 3.3 VDC (typ.)
- ◆ Excellent out-of-band
signal rejection
- ◆ Available with or without
internal ground plane
- ◆ Built in MCX connector



a time and place...
for everything

Wi-Sys Communications Inc.

WS4055/WS4065 OEM GPS Antenna

Designed for low power use while maintaining GPS performance, the low current connectorised WS4055/65 antenna's advanced circuitry integrates a SAW filter and low-noise amplifier to ensure a reliable and clear signal for the GPS receiver even in difficult conditions. The antenna design and industry leading low current draw makes the WS4055/65 series is ideal for portable or telematics applications using MONITOR, STANDBY or SLEEP modes.

The Wi-Sys OEM Antenna Family

WS3930-ULD: Quad Band Cellular
Covert Antenna

WS3940-ULD: Active GPS + Quad Band Cellular
Combined Covert Antenna

WS3947-ULD: Low Cost Active GPS + Quad
Band Cellular Combined Covert Antenna

WS3950/WS3960: High gain, Low Noise
Embedded Antenna

WS3954/WS3964: Low Current Embedded
GPS Antenna

WS3957/WS3967: Low Price Filtered
Embedded GPS antenna

WS4051/WS4061: Low Noise OEM GPS
Antenna with Built-in MCX Connector

WS4057/WS4067: Low Cost OEM GPS
Antenna with built-in MCX Connector

Technical Specifications

Environmental Specifications

- ◆ -40c to +80c operating temp. (-45c to +80c storage)
- ◆ Humidity 95% max (non condensing)

Mechanical

- ◆ **WS4055** – 25 mm x 25 mm x 6.7 mm (no ground plane)
(0.98" x 0.98" x 0.26")
- ◆ **WS4065** – 45.2 mm dia. x 6.7 mm (with ground plane)
(1.78" diameter x 0.26")
- ◆ Shock: Vertical axis 50G, Other axes 30G
- ◆ Vibration: 3 axis, sweep = 15 min,
10–200 Hz log sweep: 3G

Antenna Response

- ◆ Frequency: 1575.42 MHz
- ◆ Gain: @ 90° 3 dBic, @ 20° -2.0 dBic
- ◆ Polarization: Right Hand Circular
- ◆ Axial ratio: @ 90° 4 dB, @ 20° 6 dB

Electrical

- ◆ Voltage: 2.5 – 3.3 VDC
- ◆ Current: 2.0 mA @ 2.7VDC (typical)
- ◆ Connector: MCX
- ◆ Cable Accessory: Custom cable assembly available,
please contact factory.

LNA Specifications

- ◆ Frequency: 1572.42 – 1578.42 MHz
- ◆ Output Impedance: 50 Ohm
- ◆ VSWR: 1.5:1 max (at connector)
- ◆ Gain: @ 3.3VDC: 18 dB (typical)
- ◆ Noise figure: 1 dB
- ◆ Out-of-band rejection: + 15 MHz: 10 dB/- 15 MHz: 30 dB
+ 20 MHz: 20 dB/- 20 MHz: 30 dB
+ 40 MHz: 40 dB/- 40 MHz: 40 dB

Wi-Sys Communications Inc.

31B Richardson Side Road
Ottawa, ON K2K 0A1 Canada
Tel 613.254.7386 Fax 613.254.7388
sales@wi-sys.com www.wi-sys.com

