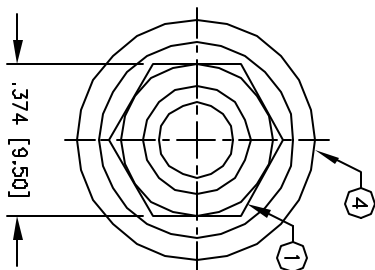
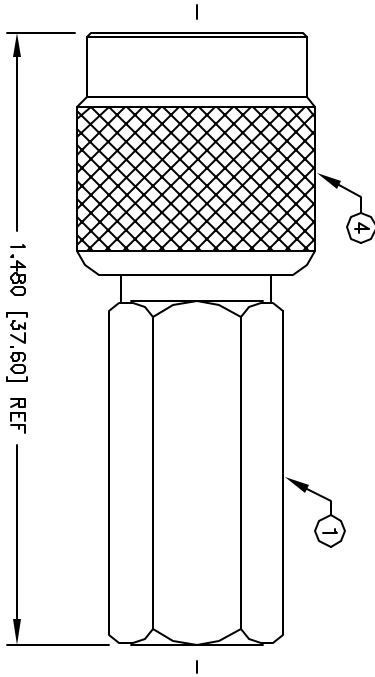


| REVISIONS |     |             |       | DOC. NO. SPC-F005, Total Pages: 2 |        |         |        |
|-----------|-----|-------------|-------|-----------------------------------|--------|---------|--------|
| DCP #     | REV | DESCRIPTION | DRAWN | DATE                              | CHECKD | DATE    | APPRVD |
| 129       | A   | RELEASED    | DJC   | 3/11/98                           | JC     | 3/13/98 | JMM    |
|           |     |             |       |                                   |        |         |        |

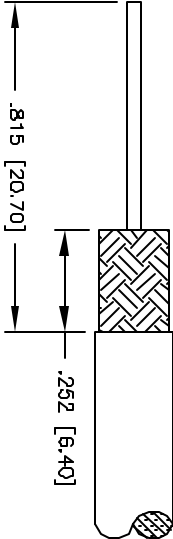


SCREW CONNECTOR ONTO CABLE IN A CLOCKWISE DIRECTION UNTIL IT STOPS

# SPECIFICATIONS:

IMPEDANCE: 50 OHMS  
WORKING VOLTAGE: 500 VRMS @ SEA LEVEL  
FREQUENCY RANGE: 0-7 GHz  
FOR RG-58, 58A, 58C, 141, 141A, 400/U, BELDEN 8240,  
8259, 8262, 9201, 9203, 9310, 9311,  
COMM/SCOPE 0268 & CUSHCRAFT ULTRALINK TL922463E

|      |                |     |             |        |
|------|----------------|-----|-------------|--------|
| 9    | WASHER         | 1   | BRASS       | NICKEL |
| 8    | GASKET         | 1   | S.I. RUBBER | RED    |
| 7    | WASHER         | 1   | DELIRIN     | NDNE   |
| 6    | RETAINING RING | 1   | BRASS       | NICKEL |
| 5    | DIELECTRIC     | 1   | DELIRIN     | NONE   |
| 4    | SHELL          | 1   | BRASS       | NICKEL |
| 3    | DIELECTRIC     | 1   | DELIRIN     | NONE   |
| 2    | PIN            | 1   | BRASS       | SILVER |
| 1    | BODY           | 1   | BRASS       | NICKEL |
| ITEM | DESCRIPTION    | QTY | MATERIAL    | FINISH |



DISCLAIMER  
ALL STATEMENTS AND TECHNICAL INFORMATION CONTAINED HEREIN ARE BASED UPON INFORMATION AND/OR TESTS WE BELIEVE TO BE ACCURATE AND RELIABLE. SINCE CONDITIONS OF USE ARE BEYOND OUR CONTROL, THE USER SHALL OBTAIN THE SATISFACTORY OF THE PRODUCT FOR THE INTENDED USE AND ASSUME ALL RISK AND LIABILITY WHATSOEVER IN CONNECTION THEREWITH.



UNLESS OTHERWISE SPECIFIED, DIMENSIONS ARE FOR REFERENCE PURPOSES ONLY.

DRAWING TITLE:

TNC MALE TWIST-ON PLUG

|               |         |
|---------------|---------|
| DRAWN BY:     | DATE:   |
| DANIEL CAREY  | 3/11/98 |
| CHECKED BY:   | DATE:   |
| JOHN COLE     | 3/13/98 |
| APPROVED BY:  | DATE:   |
| JEFF MCVICKER | 7/7/98  |

|        |          |                     |               |
|--------|----------|---------------------|---------------|
| SIZE   | DWG. NO. | ELECTRONIC FILE     | REV           |
| A      | 1545     | 92N3391.DWG         | A             |
| SCALE: | NTS      | U.O.M.: INCHES [mm] | SHEET: 1 OF 1 |