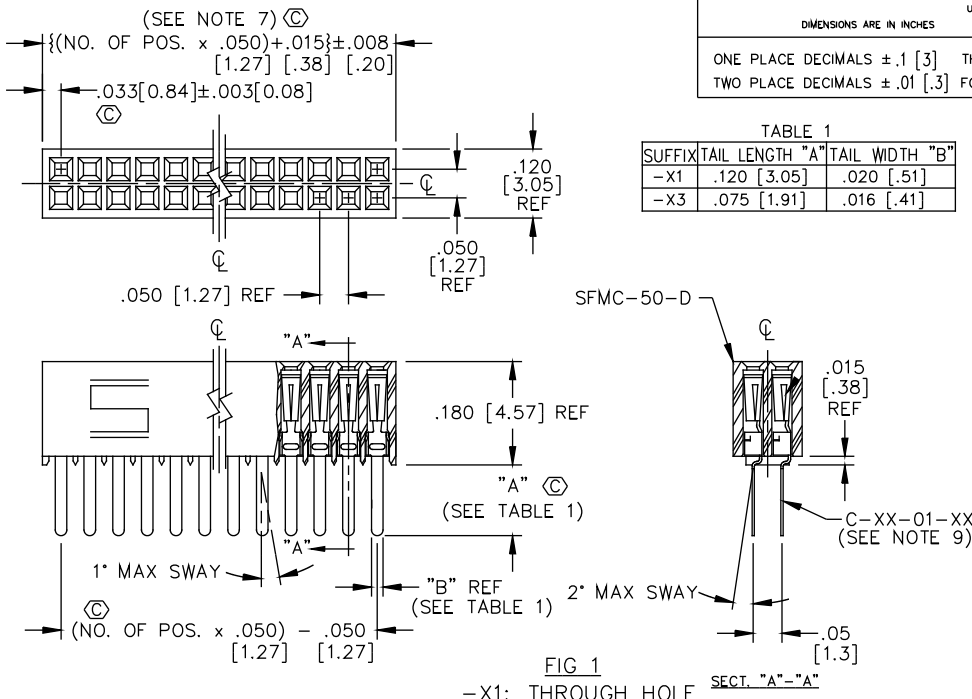


DIMENSIONS ARE IN INCHES  
ONE PLACE DECIMALS ±.1 [3] THREE PLACE DECIMALS ±.005 [.13]  
TWO PLACE DECIMALS ±.01 [3] FOUR PLACE DECIMALS ±.0020 [.051]

ANGLES  
± 2°



SFCM-1XX-XX-XX-D-XX

NO. OF POSITIONS  
ALL POSITIONS AVAILABLE  
-02 THRU -50  
USE BODY: (SFCM-50-D)

LEAD STYLE

- 01: THROUGH HOLE (SEE FIGURE 1)  
USE CONTACT: (C-44-01-XX)
- 02: SURFACE MOUNT (SEE FIGURE 2)  
USE CONTACT: (C-44-02-XX)
- 03: STRAIGHT MODIFIED (SEE FIGURE 1)  
USE CONTACT: (C-44-03-XX)
- L1: THROUGH HOLE (LOW INSERTION) (SEE FIGURE 1)  
USE CONTACT: (C-61-01-XX)
- L2: SURFACE MOUNT (LOW INSERTION) (SEE FIGURE 2)  
USE CONTACT: (C-61-02-XX)
- L3: STRAIGHT MODIFIED (LOW INSERTION) (SEE FIGURE 1)  
USE CONTACT: (C-61-03-XX)
- T1: THROUGH HOLE (PHOS BRONZE) (SEE FIGURE 1)  
USE CONTACT: (C-119-01-XX)
- T2: SURFACE MOUNT (PHOS BRONZE) (SEE FIGURE 2)  
USE CONTACT: (C-119-02-XX)

OPTIONS

- (LEAVE BLANK FOR STANDARD)
- P: PICK AND PLACE PAD (SEE FIGURE 3, SHT 2)  
USE PPP-02 (5 POSITIONS MINIMUM)
- TR: TAPE & REEL (SEE FIG 4, SHT 2)
- K: POLYIMIDE FILM PAD (.005 [.13] THICKNESS)  
(SEE FIG 4) (USE K-DOT-.157-.250-.005)  
(4 POS MIN)

BODY SPECIFICATION

- D: DOUBLE ROW

PLATING SPECIFICATION

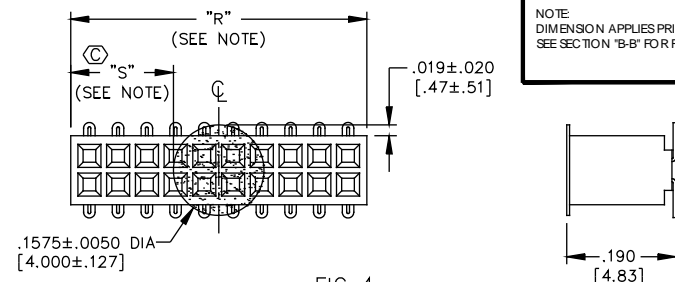
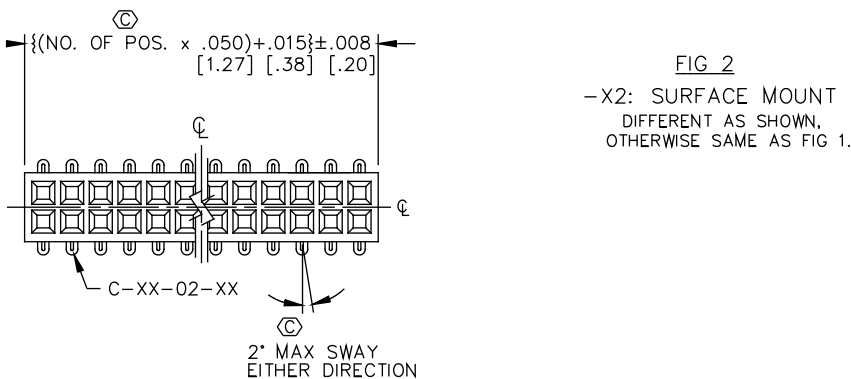
- S: 30μ" SELECTIVE GOLD IN CONTACT AREA, MATTE TIN ON TAIL
- F: 3μ" SELECTIVE GOLD IN CONTACT AREA, MATTE TIN ON TAIL
- H: 30μ" GOLD IN CONTACT AREA, 3μ" GOLD ON TAIL  
(ONLY AVAILABLE ON -02, -L2, & -T2 LEAD STYLES)
- FM: 3μ" SELECTIVE GOLD IN CONTACT AREA, MATTE TIN ON TAIL
- SM: 30μ" SELECTIVE GOLD IN CONTACT AREA, MATTE TIN ON TAIL
- L: 10μ" SELECTIVE GOLD IN CONTACT AREA, MATTE TIN ON TAIL

TABLE 2 (SEE NOTE 6)

LEAD STYLE & OPTION	PACKAGING TUBE	PLUG
-X1, -X3, -X3-K	PT-1-24-15-09	TP-12
-X2	PT-1-24-14-09	TP-24-02
-X2-K	PT-1-24-14-09	TP-24-02
-X2-P	PT-1-24-01-38	TP-24
-X1-K	PT-1-24-15-09	TP-12
-X1-P, -X3-P	PT-1-24-01-09	TP-24

NOTES

1. MIN. PUSHOUT FORCE: .5 lb.
2. COPLANARITY: .004 [.10] = POS 02 THRU 26  
.006 [.15] = POS 27 THRU 50
3.  $\text{\textcircled{C}}$  REPRESENTS CRITICAL DIMENSION.
4. USE SFCM-50-D BODY.
5. NOTE DELETED.
6. PACKAGE ONLY POSITIONS -04 THRU -50 IN TUBES  
LAYER PACKAGE POSITIONS -02 THRU -03.
7. CUT FLASH TO BE .010 MAX WITH NO FLASH EXTENDING BELOW  
LEADS OR IN HOLES OF BODY.
8. MAXIMUM PIN HEIGHT VARIATION: .003 [0.08] FROM PIN TO PIN AND  
ROW TO ROW. MUST BE MEASURED BETWEEN ADJACENT PINS.
9. PINS CAN BE ORIENTED IN ANY DIRECTION; BOTH  
ROWS MUST FACE SAME WAY.
10. DIMENSION TO BE MEASURED AT BEND.
11. MIXED PIN ORIENTATION ACCEPTABLE.



NOTE: "R" = USED MEASURED DIMENSION (REF)  
"S" =  $\{(R) - .1575 [4.00]\} / 2 \pm .020 [.51]$

MATERIAL:  
BODY:  
LCP, UL 94 V0  
COLOR: BLACK

CONTACTS:  
C-44 & C-61:  
#25 BeCu, 1/2 HARD  
AGE HARDENED  
C-119  
PHOS BRONZE 521

EXISPRD\ASSEMBLY\050  
SFCM-ASM

**santec**

PHONE (812) 944-6733 P.O. BOX 1147  
CODE 55322

MADE BY:  
BRATCHER 10-5-94

SFCM-1XX-XX-XX-D-XX  
SHEET 1 OF 2

PROPRIETARY NOTE  
THIS DOCUMENT CONTAINS CONFIDENTIAL AND PROPRIETARY INFORMATION AND ALL DESIGN, MANUFACTURING, PRODUCTION, AND PATENT RIGHTS AND SALES RIGHTS ARE EXPRESSLY RESERVED BY SAMTEC, INC. THIS DOCUMENT SHALL NOT BE DISCLOSED, IN WHOLE OR PART, TO ANY UNAUTHORIZED PERSON OR ENTITY NOR REPRODUCED, TRANSMITTED OR INCORPORATED IN ANY OTHER PRODUCT IN ANY MANNER WITHOUT THE EXPRESS WRITTEN CONSENT OF SAMTEC, INC.