



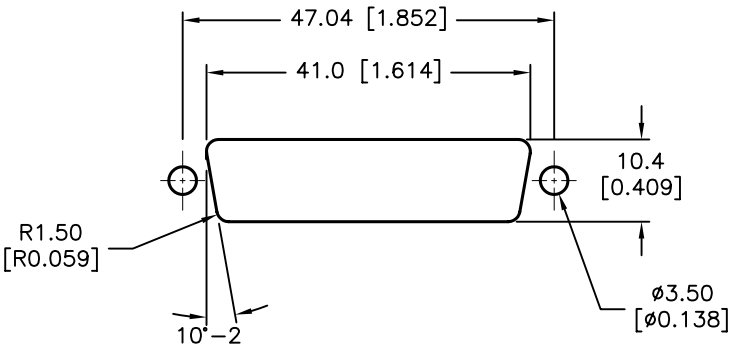
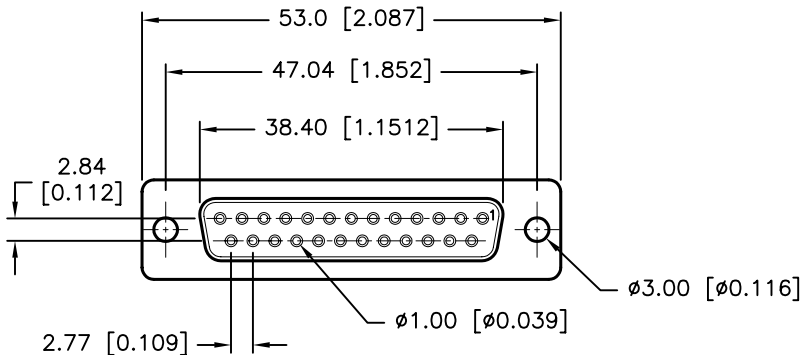
ALL RIGHTS RESERVED. NO PORTION OF THIS PUBLICATION, WHETHER IN WHOLE OR IN PART CAN BE REPRODUCED WITHOUT THE EXPRESS WRITTEN CONSENT OF SPC TECHNOLOGY.

SPC--F005.DWG

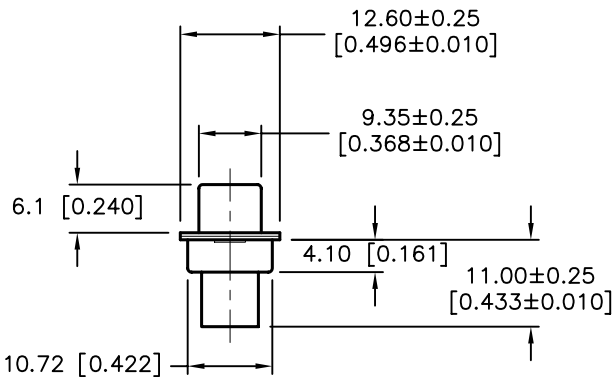
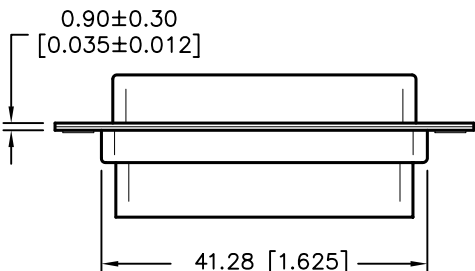
REVISIONS

DOC. NO. SPC--F005 * Effective: 7/8/02 * DCP No: 1398

DCP #	REV	DESCRIPTION	DRAWN	DATE	CHECKD	DATE	APPRVD	DATE
1876	A	RELEASED	EO	07/25/06	SA	07/25/06	HO	07/25/06



PANEL CUTOUT



SPECIFICATIONS:

Shell: Steel, Zinc Yellow Chromated
Insulator: UL 94V-0 Rated, Black
1. PBT+30% Fiber Glass
2. Nylon-66
Current Rating: 5 Amps
Contact Resistance: 15 miliohms Max
Insulator Resistance: 1000 Megohms Min
Voltage: 500 VAC for 1 Minute
Temperature: -50°C to +100°C

DISCLAIMER:
ALL STATEMENTS AND TECHNICAL INFORMATION CONTAINED HEREIN ARE BASED UPON INFORMATION AND/OR TESTS WE BELIEVE TO BE ACCURATE AND RELIABLE. SINCE CONDITIONS OF USE ARE BEYOND OUR CONTROL, THE USER SHALL DETERMINE THE SUITABILITY OF THE PRODUCT FOR THE INTENDED USE AND ASSUME ALL RISK AND LIABILITY WHATSOEVER IN CONNECTION THEREWITH.

TOLERANCES:

Unless Otherwise Specified
.X ±0.35 [0.014]
.XX ±0.15 [0.006]

DRAWN BY:

EKLAS ODISH

CHECKED BY:

SAMI ALNADI

APPROVED BY:

HISHAM ODISH

DATE:

07/25/06

DATE:

07/25/06

DATE:

07/25/06

DRAWING TITLE:

25 Pin Crimp Type D-Sub Plug

SIZE

A

DWG. NO.

SPC15272

ELECTRONIC FILE

79K4869.DWG

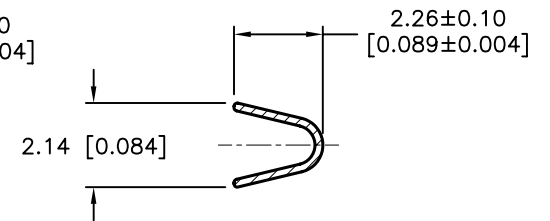
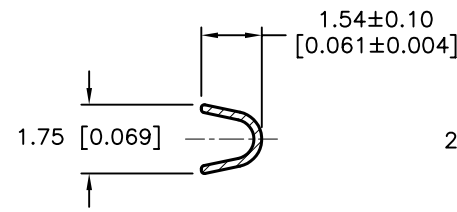
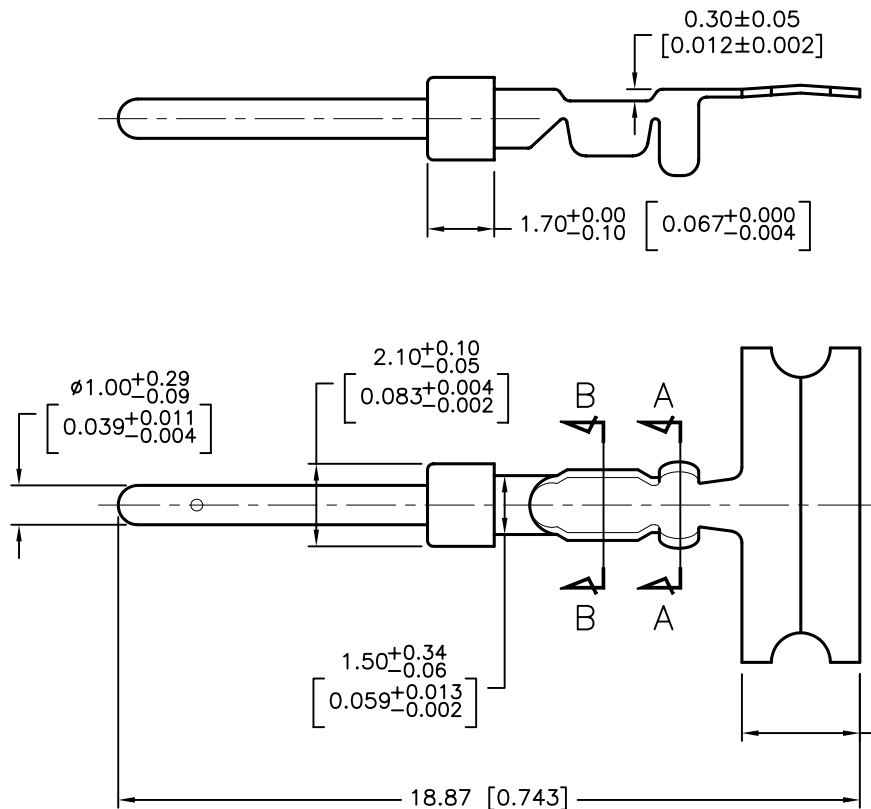
REV

A

SCALE: NTS

U.O.M.: mm [INCHES]

SHEET: 1 OF 2



SPECIFICATIONS

Contact: Brass, Stamped Gold-Plated
on Contact Area Nickel-Plated
on Crimp-Area