

DESIGNED & DIMENSIONED
IN MILLIMETERS[INCHES]

PATENT NUMBER
7837522
ADDITIONAL PATENTS
PENDING

SEAM8-XX-SXX.X-X-XX-X-XX-K

No. OF POSITIONS
-10, -20, -30, -40, -50, ***-60
(PER ROW)

LEADSTYLE
-S02.0= 2.0mm
-S05.0= 5.0mm

PLATING SPECIFICATION
-S: .000030" SELECTIVE GOLD IN CONTACT
AREA, MATTE TIN ON TAIL
-L: .000010" LIGHT SELECTIVE GOLD IN CONTACT
AREA, MATTE TIN ON TAIL

ROW
-04: 4 ROWS
-06: 6 ROWS
-08: 8 ROWS (SEE NOTE 11)
-10: 10 ROWS (SEE NOTE 11)
**-12: 12 ROWS (SEE NOTE 13)

K DOT
(SEE SHT 4, FIG. 3)(SEE NOTE 14)
DOT APPLICATOR-KAPTON TAPE

OPTIONS
-GP= GUIDE POST (SEE SHT 3, FIG 2)
(ONLY AVAIL. ON -S02.0 LEADSTYLE)
(RELEASED ON THE -04, -08 & -10 ROWS
(NOT TOOLED ON -06 ROW)
(FOR MATING WITH SEAF8-...-RA-GP
ONLY)

SOLDER COMPOSITION & STYLE (C)
*-1: 63.0% TIN / 37.0% LEAD
CHARGE TAIL
-2: 95.5% TIN / 3.8% SILVER/
0.7% COPPER CHARGE TAIL

(* = NOT TOOLED)
(** = NOT ENGINEERING APPROVED)
(*** = NOT ENGINEERING APPROVED,
NOT TOOLED FOR -04, -06 & -08 ROWS)

DO NOT
SCALE FROM
THIS PRINT

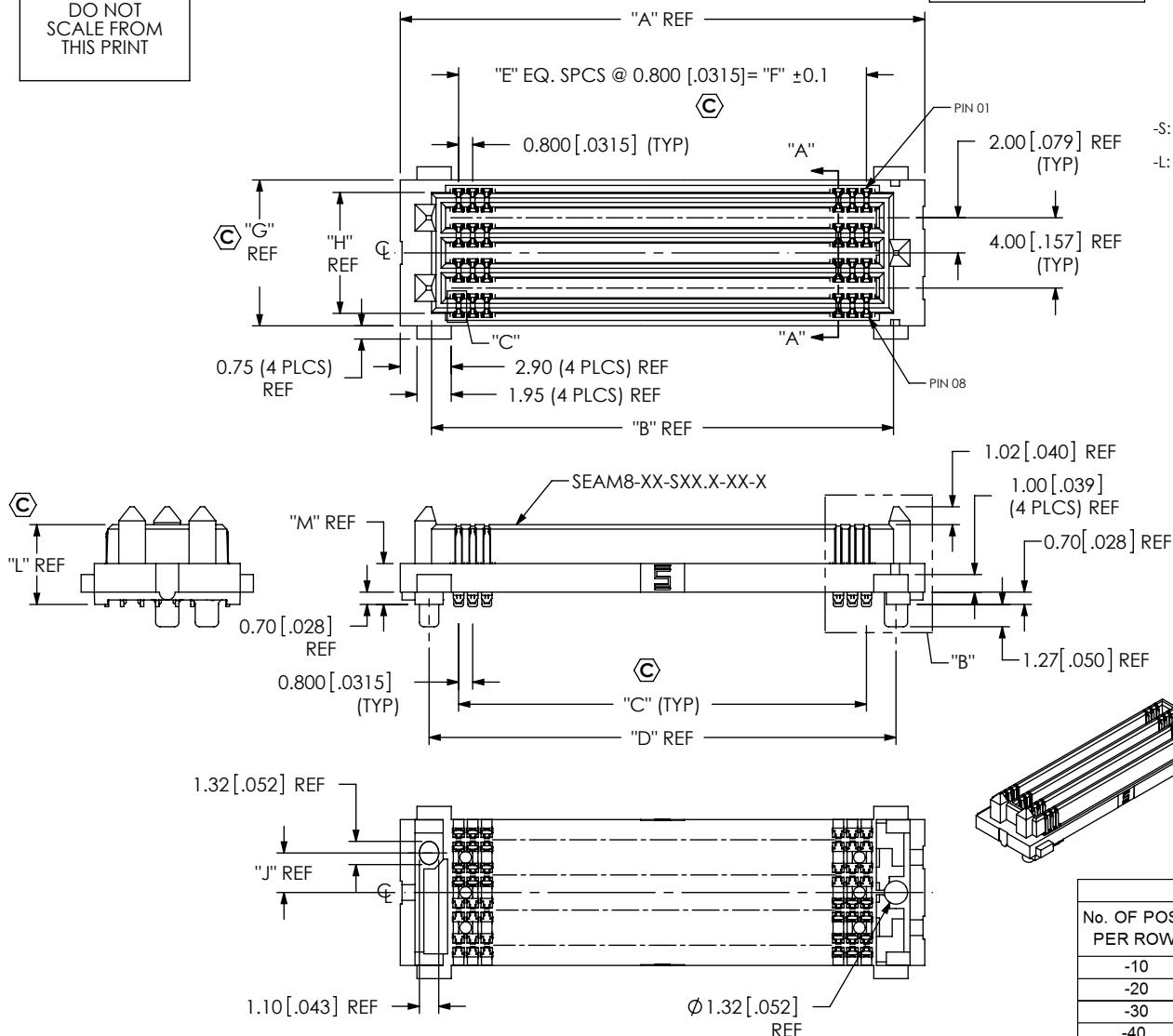


FIG 1
(SEAM8-30-S02.0-X-08-X-XX-K SHOWN)
(SOME CENTER FEATURES REMOVED FOR CLARITY)

NOTES:

1. (C) REPRESENTS A CRITICAL DIMENSION.
2. PUSH OUT FORCE 1.6N [.36 LBS.]
3. DIMENSION TO BE MEASURED IN ALL FOUR CORNERS TO THE STAND-OFFS.
4. TAPE & REEL IS STANDARD PACKAGING.
5. FOR QUANTITIES UP TO 49 PCS., NO LEADER, TRAILER OR REEL WILL BE SUPPLIED.
6. FOR QUANTITIES OF 50-124 PCS., NO LEADER OR TRAILER WILL BE SUPPLIED, SPLICES MAY BE PRESENT.
7. DELETED NOTE
8. ATTACH LABEL "SEAX-0001" TO EACH TAPE & REEL PACKAGE.
9. MAXIMUM ROW TO ROW VARIATION 0.08 [.003], MEASURED FIRST AND LAST POSITIONS ONLY, ALL ROWS.
10. MINIMUM GUIDE POST PUSH OUT FORCE: 4.0LBS [17.8N]
11. -08 & -10 ROWS ARE RELEASED FOR NITROGEN ENVIRONMENT PROCESSING ONLY.
12. NOT RECOMMENDED FOR AIR ONLY PROCESSING.
13. NOTE DELETED.
14. ONLY TOOLED ON -S02.0 LEAD STYLE AND ONLY AVAILABLE IN -50 & -60 POSITIONS.
15. K DOT WILL BE SUPPLIED WHETHER OR NOT -K IS SPECIFIED.

TABLE 5		
LEAD STYLE	"L"	"M"
-S02.0	4.54 [0.179]	2.33 [0.092]
-S05.0	7.54 [0.297]	5.33 [0.210]

TABLE 1		
STACK HEIGHT		
SEAF8 LEAD STYLE	SEAM8 LEAD STYLE	
	-S02.0	-S05.0
-05.0 [0.197]	7.0 [0.276]	10.0 [0.394]

TABLE 4			
-No. OF ROWS	"G"	"H"	"J"
-04	4.30 [0.169]	2.88 [0.113]	1.25 [0.049]
-06	6.30 [0.248]	4.88 [0.192]	2.25 [0.089]
-08 (SEE NOTE 11)	8.30 [0.327]	6.88 [0.271]	2.25 [0.089]
-10 (SEE NOTE 11)	10.30 [0.406]	8.88 [0.350]	2.25 [0.089]
** -12	12.30 [0.484]	10.88 [0.428]	2.25 [0.089]

(** = NOT ENGINEERING APPROVED)

TABLE 2		
SEAM8 ASSY	BODY CALLOUT	TERMINAL SUB ASSY
SEAM8-XX-S02.0-X-XX-X-XX	SEAM8-XX-S02.0-X-XX	SUB-T-1M71-02.0-X-X
SEAM8-XX-S05.0-X-XX-X-XX	SEAM8-XX-S05.0-X-XX	SUB-T-1M71-05.0-X-X

TABLE 3						
No. OF POS. PER ROW	"A"	"B"	"C"	"D"	"E"	"F"
-10	13.84 [0.545]	10.28 [0.405]	7.20 [0.283]	10.56 [0.416]	9	7.200 [0.2835]
-20	21.84 [0.860]	18.28 [0.720]	15.20 [0.598]	18.56 [0.731]	19	15.200 [0.5984]
-30	29.84 [1.175]	26.28 [1.035]	23.20 [0.913]	26.56 [1.046]	29	23.200 [0.9134]
-40	37.84 [1.490]	34.28 [1.350]	31.20 [1.228]	34.56 [1.361]	39	31.200 [1.2283]
-50	45.84 [1.805]	42.28 [1.665]	39.20 [1.543]	42.56 [1.676]	49	39.200 [1.5433]
***-60	53.84 [2.120]	50.28 [1.980]	47.20 [1.858]	50.56 [1.991]	49	47.200 [1.8583]

(*** = NOT ENGINEERING APPROVED, NOT TOOLED FOR -04, -06 & -08 ROWS)

UNLESS OTHERWISE SPECIFIED,
DIMENSIONS ARE IN MILLIMETERS[INCHES].

TOLERANCES ARE:

DECIMALS ANGLES
X.X: ±0.3 [.01] 2°
X.XX: ±0.13 [.005]
X.XXX: ±0.051 [.0020]

MATERIAL: DO NOT SCALE DRAWING
INSULATOR: LCP, COLOR: BLACK
TERMINAL: COPPER ALLOY
GUIDE POST: BRASS

PROPRIETARY NOTE
THIS DOCUMENT CONTAINS CONFIDENTIAL AND
PROPRIETARY INFORMATION AND ALL DESIGN,
MANUFACTURING, REPRODUCTION, USE, PATENT RIGHTS
AND SALES RIGHTS ARE EXPRESSLY RESERVED BY SAMTEC,
INC. THIS DOCUMENT SHALL NOT BE DISCLOSED, IN WHOLE
OR PART, TO ANY UNAUTHORIZED PERSON OR ENTITY NOR
REPRODUCED, TRANSFERRED OR INCORPORATED IN ANY
OTHER PROJECT IN ANY MANNER WITHOUT THE EXPRESS
WRITTEN CONSENT OF SAMTEC, INC.

SHEET SCALE: 2:1

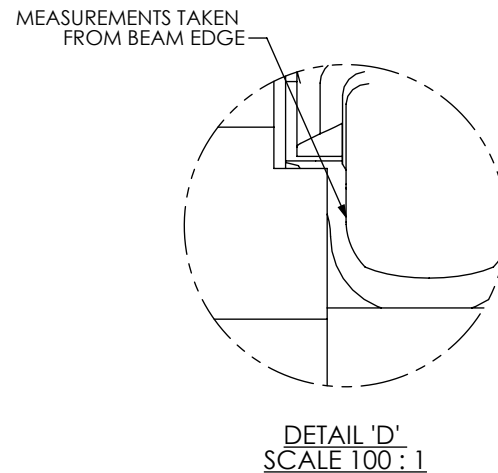
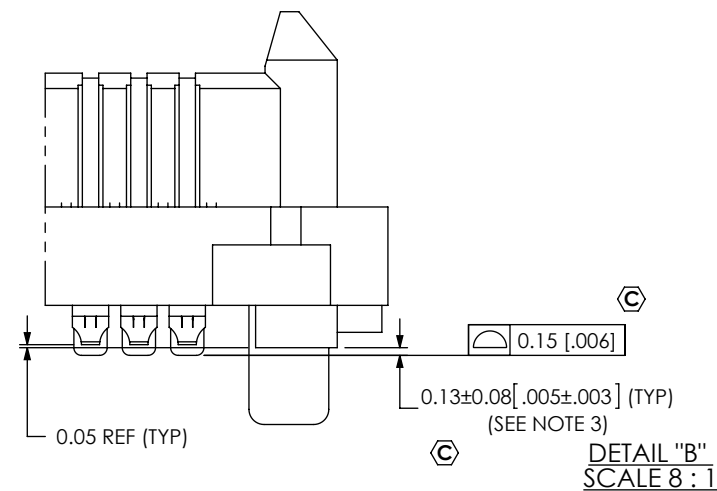
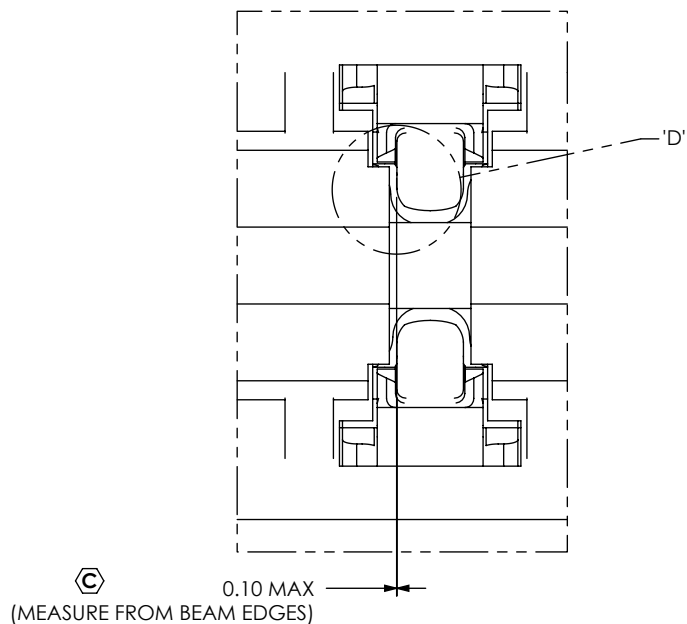
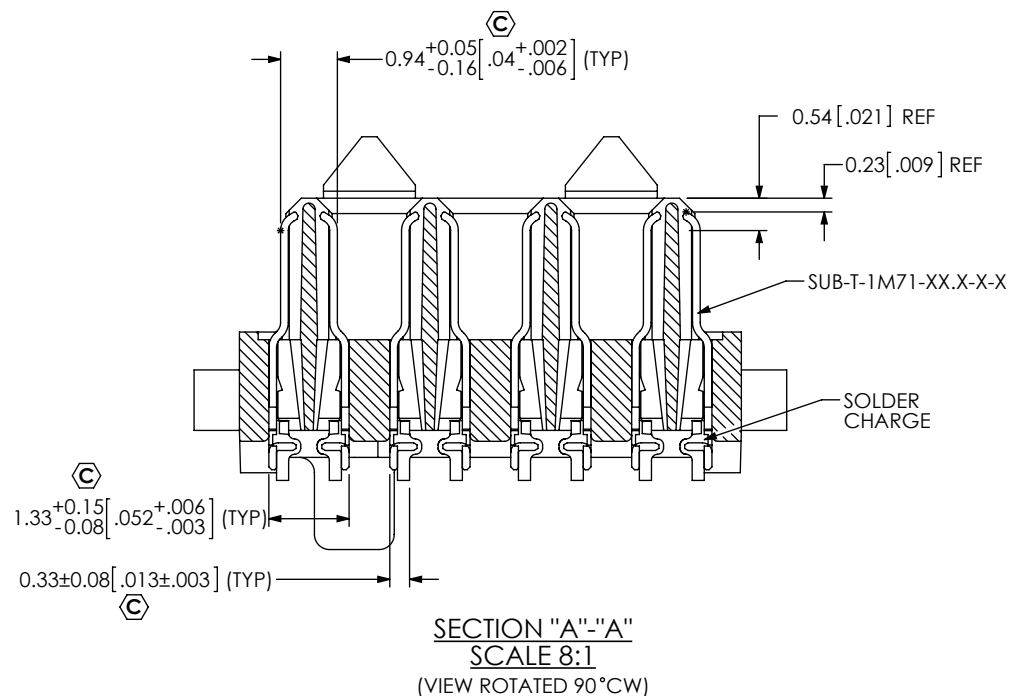
samtec

520 PARK EAST BLVD, NEW ALBANY, IN 47150
PHONE: 812-944-6733 FAX: 812-948-5047
e-Mail: info@SAMTEC.com code 55322

DESCRIPTION:
0.8MM PITCH TERMINAL ARRAY ASSY

DWG. NO.
SEAM8-XX-SXX.X-X-XX-X-XX-K

BY: KNOWLDEN 12/29/08 SHEET 1 OF 4



<p>PROPRIETARY NOTE</p> <p>THIS DOCUMENT CONTAINS CONFIDENTIAL AND PROPRIETARY INFORMATION AND ALL DESIGN, MANUFACTURING, REPRODUCTION, USE, PATENT RIGHTS AND SALES RIGHTS ARE EXPRESSLY RESERVED BY SAMTEC, INC. THIS DOCUMENT SHALL NOT BE DISCLOSED, IN WHOLE OR PART, TO ANY UNAUTHORIZED PERSON OR ENTITY NOR REPRODUCED, TRANSFERRED OR INCORPORATED IN ANY OTHER PROJECT IN ANY MANNER WITHOUT THE EXPRESS WRITTEN CONSENT OF SAMTEC, INC.</p> <p>DO NOT SCALE DRAWING</p> <p>SHEET SCALE: 2:1</p>	<p>samtec</p> <p>520 PARK EAST BLVD, NEW ALBANY, IN 47150 PHONE: 812-944-6733 FAX: 812-948-5047 e-Mail: info@SAMTEC.com code 55322</p>		
	<p>DESCRIPTION: 0.8MM PITCH TERMINAL ARRAY ASSY</p>		
	<p>DWG. NO. SEAM8-XX-SXX.X-X-XX-X-XX-K</p>		
	BY: KNOWLDEN	12/29/08	SHEET 2 OF 4

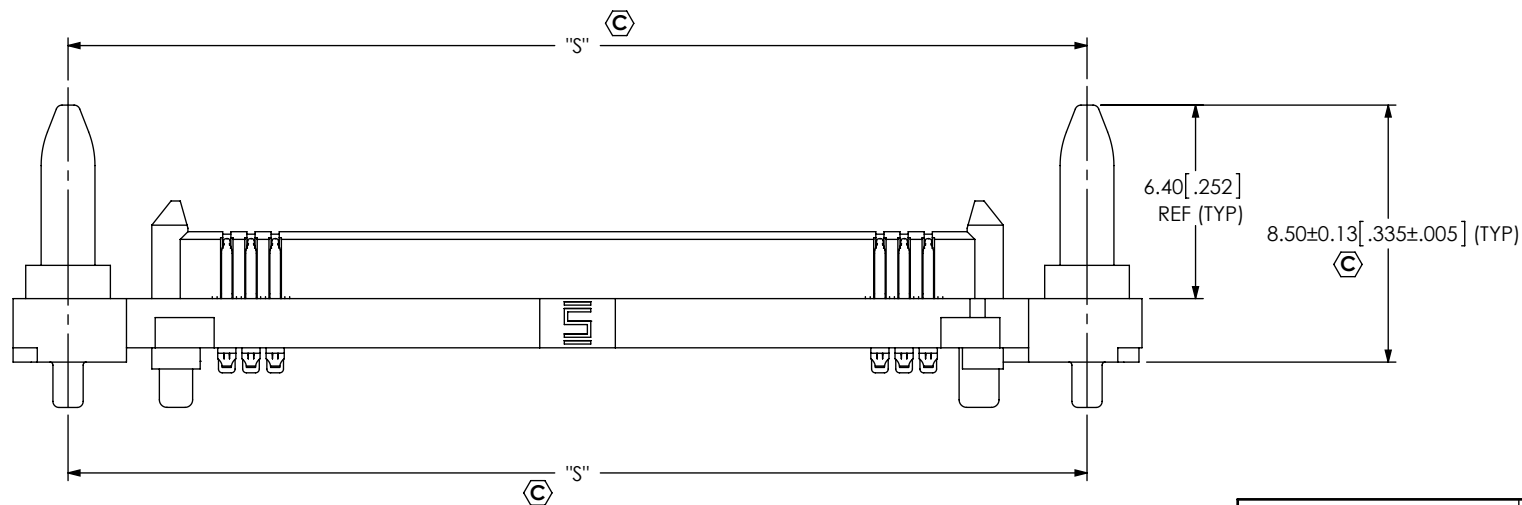
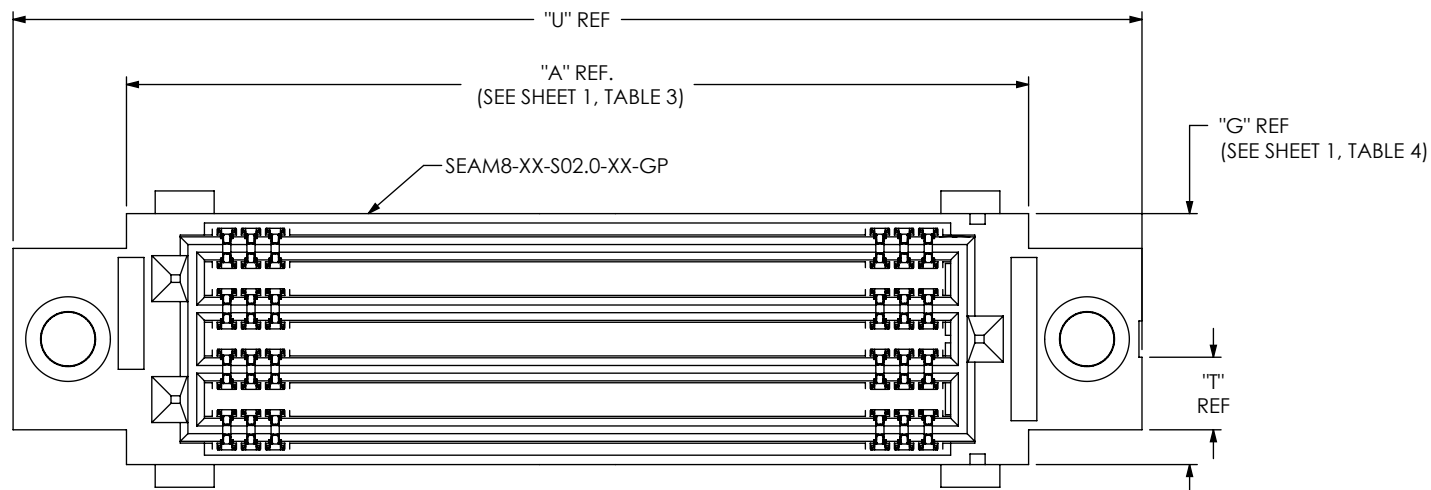


FIG 2
-GP (GUIDE POST OPTION)
(SEAM8-XX-S02.0-XX-X-GP-K SHOWN)
(SOME CENTER FEATURES REMOVED FOR CLARITY)

TABLE 10

No. OF ROWS	"T"
-04	2.80 [0.110]
*-06	4.00 [0.157]
-08 (SEE NOTE 11)	6.00 [0.236]
-10 (SEE NOTE 11)	6.00 [0.236]
**12	6.00 [0.236]

(* = NOT TOOLED)

(** = NOT ENGINEERING APPROVED)

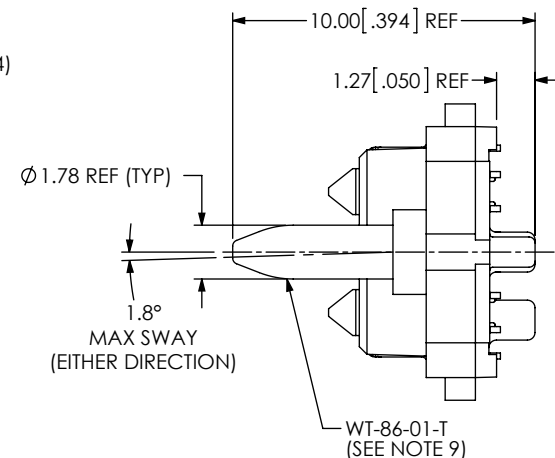


TABLE 9

No. OF POS. PER ROW	"S"	"U"
-10	17.70 [0.697]	21.34 [0.840]
-20	25.70 [1.012]	29.34 [1.155]
-30	33.70 [1.327]	37.34 [1.470]
-40	41.70 [1.642]	45.34 [1.785]
-50	49.70 [1.957]	53.34 [2.100]
***-60	57.70 [2.272]	61.34 [2.415]

(*** = NOT ENGINEERING APPROVED,
NOT TOOLED FOR -04, -06 & -08 ROWS)

PROPRIETARY NOTE
THIS DOCUMENT CONTAINS CONFIDENTIAL AND PROPRIETARY INFORMATION AND ALL DESIGN, MANUFACTURING, REPRODUCTION, USE, PATENT RIGHTS AND SALES RIGHTS ARE EXPRESSLY RESERVED BY SAMTEC, INC. THIS DOCUMENT SHALL NOT BE DISCLOSED, IN WHOLE OR PART, TO ANY UNAUTHORIZED PERSON OR ENTITY NOR REPRODUCED, TRANSFERRED OR INCORPORATED IN ANY OTHER PROJECT IN ANY MANNER WITHOUT THE EXPRESS WRITTEN CONSENT OF SAMTEC, INC.

DO NOT SCALE DRAWING

SHEET SCALE: 2:1

samtec

520 PARK EAST BLVD, NEW ALBANY, IN 47150
PHONE: 812-944-6733 FAX: 812-948-5047
e-Mail info@SAMTEC.com code 55322

DESCRIPTION:
0.8MM PITCH TERMINAL ARRAY ASSY

DWG. NO.
SEAM8-XX-SXX.X-X-XX-X-XX-K

BY: KNOWLDEN 12/29/08 SHEET 3 OF 4

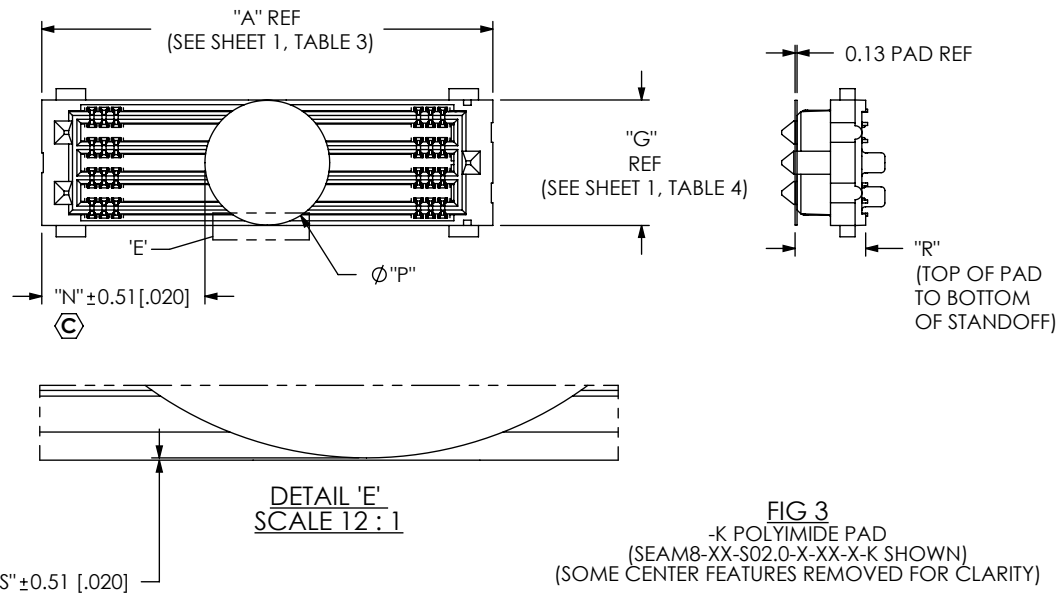


TABLE 7		
-LEAD STYLE	"R"	
-S02.0	4.67	[0.184]
-S05.0	7.67	[0.302]

TABLE 8	
-No. OF ROWS	K-DOT #
-04	K-DOT-.167-.281-.005
-06	K-DOT-.246-.375-.005
-08 (SEE NOTE 11)	K-DOT-.325-.450-.005
☒ -10 (SEE NOTE 11)	K-DOT-.404-.500-.005
**-.12	K-DOT-.460-.550-.005

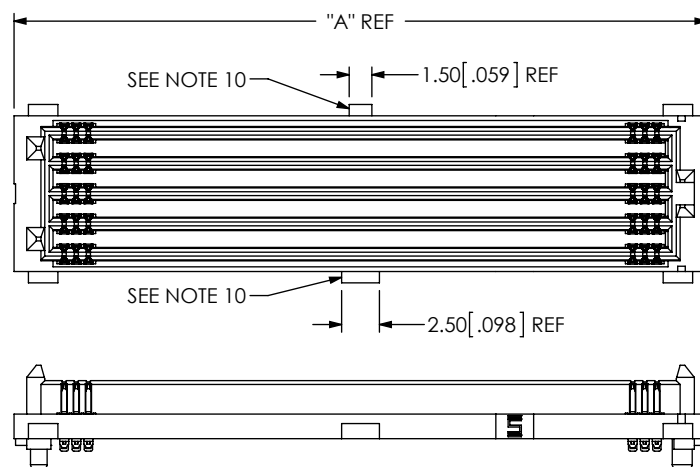
(** = NOT ENGINEERING APPROVED)

☒ = FOR 10 POSITION ONLY USE K-DOT-.325-.450-.005

TABLE 6								
-No. OF ROWS	Ø "P"	"N"						"S"
		10 Pos.	20 Pos.	30 Pos.	-40 Pos	-50 Pos.	-60 Pos	
-04	4.25 [0.167]	4.80 [0.189]	8.80 [0.346]	12.80 [0.504]	16.80 [0.661]	20.80 [0.819]	24.80 [0.976]	.025 [0.001]
-06	6.25 [0.246]	3.80 [0.149]	7.80 [0.307]	11.80 [0.464]	15.80 [0.622]	19.80 [0.779]	23.80 [0.937]	.026 [0.001]
-08 (SEE NOTE 11)	8.25 [0.325]	2.80 [0.110]	6.80 [0.268]	10.80 [0.425]	14.80 [0.582]	18.80 [0.740]	22.80 [0.897]	.025 [0.001]
☐ -10 (SEE NOTE 11)	10.26 [0.404]	2.80 [0.110]	5.79 [0.228]	9.79 [0.385]	13.79 [0.543]	17.79 [0.700]	21.79 [0.858]	.020 [0.001]
**-.12	11.68 [0.460]	1.08 [0.043]	5.08 [0.200]	9.08 [0.357]	13.08 [0.515]	17.08 [0.672]	21.08 [0.830]	.310 [0.012]

(** = NOT ENGINEERING APPROVED)

☐ = FOR 10 POSITION ONLY, Ø "P" = 8.25 [0.325], "S" = 1.025 [0.040]



<p>PROPRIETARY NOTE</p> <p>THIS DOCUMENT CONTAINS CONFIDENTIAL AND PROPRIETARY INFORMATION AND ALL DESIGN, MANUFACTURING, REPRODUCTION, USE, PATENT RIGHTS AND SALES RIGHTS ARE EXPRESSLY RESERVED BY SAMTEC, INC. THIS DOCUMENT SHALL NOT BE DISCLOSED, IN WHOLE OR PART, TO ANY UNAUTHORIZED PERSON OR ENTITY NOR REPRODUCED, TRANSFERRED OR INCORPORATED IN ANY OTHER PROJECT IN ANY MANNER WITHOUT THE EXPRESS WRITTEN CONSENT OF SAMTEC, INC.</p> <p>DO NOT SCALE DRAWING</p> <p>SHEET SCALE: 2:1</p>	<p>520 PARK EAST BLVD, NEW ALBANY, IN 47150 PHONE: 812-944-6733 FAX: 812-948-5047 e-Mail: info@SAMTEC.com code 55322</p>	
	<p>DESCRIPTION: 0.8MM PITCH TERMINAL ARRAY ASSY</p>	
	<p>DWG. NO. SEAM8-XX-SXX.X-X-XX-X-XX-K</p>	
	<p>BY: KNOWLDEN 12/29/08 SHEET 4 OF 4</p>	