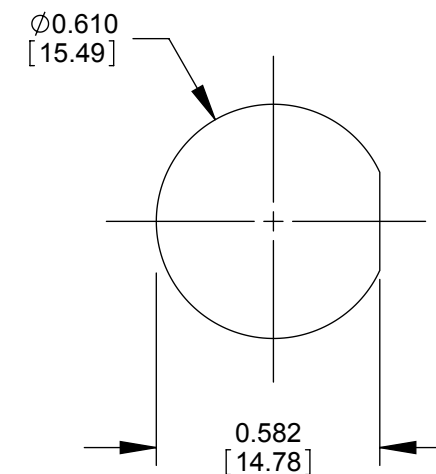
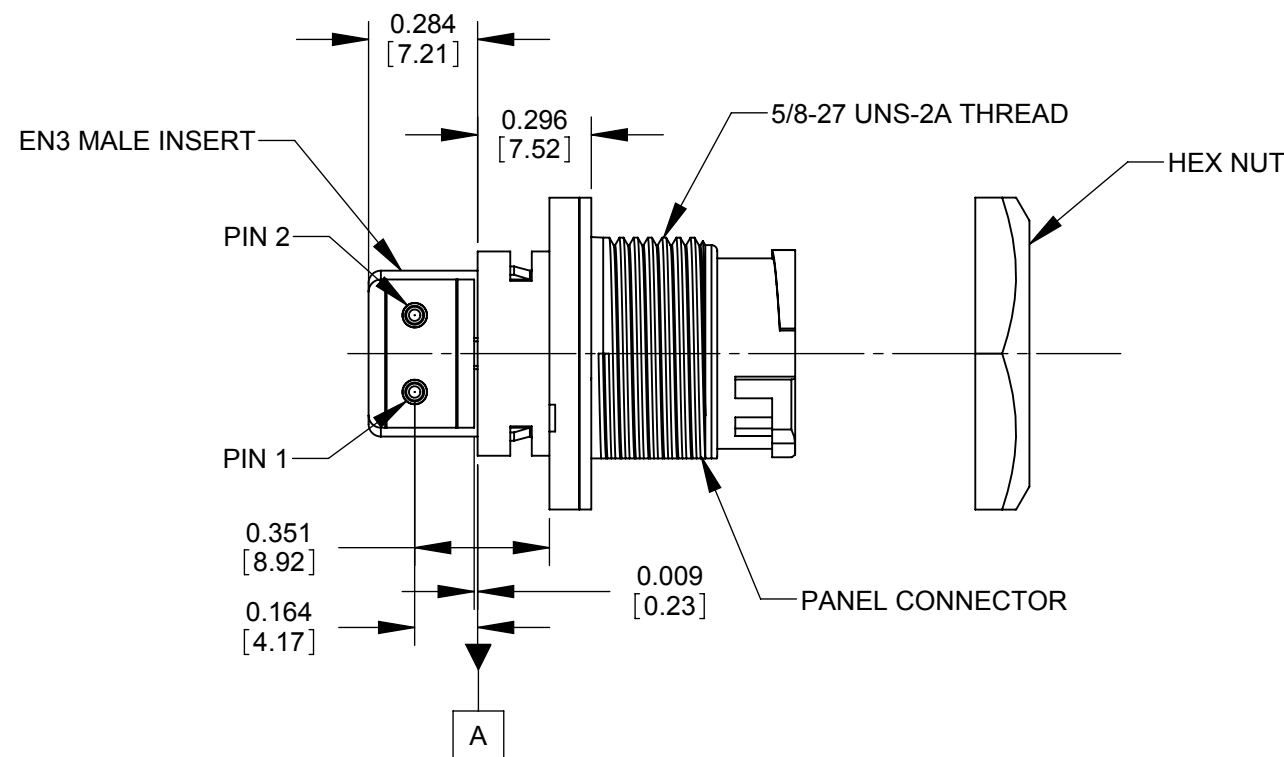


RECOMMENDED PCB LAYOUT
(COMPONENT SIDE)



RECOMMENDED
PANEL CUTOUT

NOTES:

1. MATERIALS:

CONTACTS: COPPER BASE ALLOY, GOLD PLATED

RA MALE INSERT, CONNECTOR SHELL: THERMOPLASTIC

CONNECTOR SHELL INTERIOR: THERMOPLASTIC RUBBER

HEX NUT: THERMOPLASTIC (SHIPPED UNASSEMBLED)

2. THIS PRODUCT IS RoHS COMPLIANT.

CUSTOMER DRAWING

					<div>UNLESS OTHERWISE SPECIFIED</div> <div>1. ALL DIMENSIONS IN INCHES</div> <div>- TWO PLACE DECIMALS ±0.02</div> <div>- THREE PLACE DECIMALS ±0.005</div>	THIS DRAWING DESCRIBES A DESIGN CONSIDERED PROPRIETARY IN NATURE, DEVELOPED AND MANUFACTURED BY SWITCHCRAFT INC. AND IS RELEASED ON A CONFIDENTIAL BASIS FOR IDENTIFICATION PURPOSES ONLY.													
						SIZE	WIDTH		MULT		LBS/M		TEMPER						
						FINISH SPEC No.						MATERIAL SPEC No.							
						FIRST USED ON				SCALE 2:1		<div>Switchcraft®</div> <div>SHEET 1 OF 1</div>							
						DATE DRAWN 7/24/06		BY SRC	CHKD JGK 3/25/10		APVD TJK 3/25/10								
A	26354	8/6/08	JGK	TJK															
REV	ECO NUMBER	DATE	BY	APVD															
REVISIONS					DO NOT SCALE DRAWING	NAME EN3 MALE, 2 PIN RAPC, RoHS						PART No. EN3P2MRAPCX						REV A	

A	26354	8/6/08	JGK	TJK
REV	ECO NUMBER	DATE	BY	APVD
REVISIONS				

UNLESS OTHERWISE SPECIFIED	
1. ALL DIMENSIONS IN INCHES	
- TWO PLACE DECIMALS ±0.02	
- THREE PLACE DECIMALS ±0.005	
DO NOT SCALE DRAWING	