

# ELECTRICAL DATA

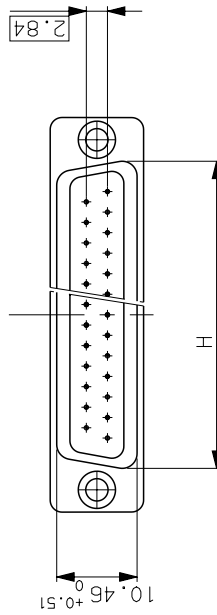
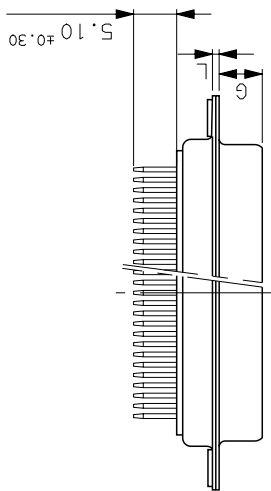
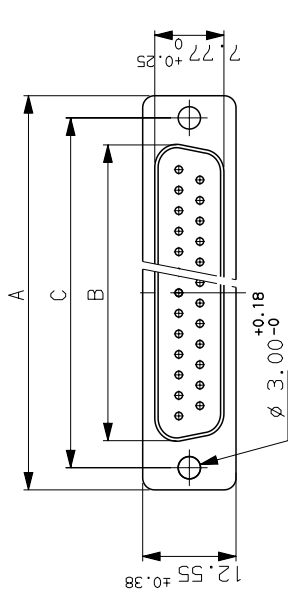
-Current at AMB.  
5A  
7.5A  
-Contact resistance  
≤10mΩ  
-Insulation resistance  
≥500MΩ  
-TEST VOLTAGE  
contact/contact  
≥1000V  
contact/ground  
≥1200V

# MECHANICAL DATA

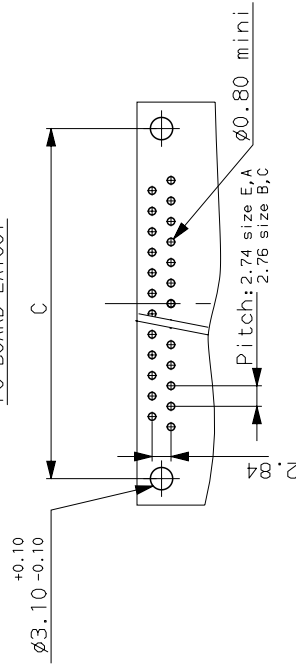
-Contact force  
≥0.14N  
-Retention force  
≥40N  
-Insertion force  
according to DIN41652 Part 2  
-Withdrawal force  
according to DIN41652 Part 2  
-Mechanical endurance  
≥ 500 matings / unmatings  
-Material shell  
steel, tin plated  
-Material insulator  
glass filled thermoplastic UL94V0  
-Material contacts  
pin:brass,socket:brass  
-Finish on contact area  
gold over nickel  
-Finish on termination end  
bright tin-lead over nickel  
-Solderability  
according to DIN 41640 Part 70, test 12a  
according to DIN41640 Part 14, test 6c,50g  
-Vibration  
according to DIN41640 Part 15, test 6d,20g  
10 to 2000Hz;discontinuity≤1µs

# ENVIRONMENTAL DATA

-Climatic category  
-55° / +125°/21j  
-Corrosion  
salt spray,24h



# PC BOARD LAYOUT



Dimensions are in millimeters

Shell Number of size contacts	A	B	C	F	G	H	K	L	Part Number
E 09	30.43	16.21	24.99	10.64	6.05	19.02	1.50 MAXI	0.80	0.4µ gold 1.25µ gold
A 15	38.76	24.54	33.32	10.64	6.05	27.25	1.50 MAXI	0.80	DEP0953300T DEP095343T
B 25	52.65	38.25	47.04	10.64	6.05	41.02	1.50 MAXI	0.80	DAP1553300T DAP155343T
C 37	68.94	54.71	63.50	10.64	6.05	57.45	1.50 MAXI	1.00	DBP2553300T DBP255343T
									DCP3753300T DCP375343T

This document is the property of FRAMATOME CONNECTORS FRANCE. It must not be reproduced or communicated without permission in writing from the owners.

FRAMATOME CONNECTORS FRANCE  
Rue Louis Breguet - Bp 05  
72024 LE MANS Cedex  
Tel. 33 (16) 43.84.08.43



PROJECT  
M94D001

C01-8637-0467

A3

b 18/02/02 Add part number 352 and 343.

ISS DATE Latest modification by : JOUBERT

Designed by: JARRY date:17/06/96 Type of drawing: CLIENT

TITLE : SOCKET CONNECTOR SUB WITH STRAIGHT DIP SOLDER

SCALE: 1.3



SHEET 01