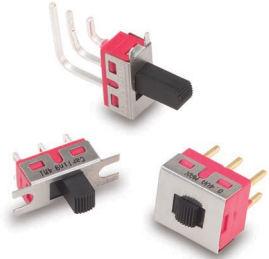


**4S1 & 4SS-Series**  
Sub-Miniature &  
**Sealed** Sub-Miniature  
Slide Switches



**4M1-Series**  
Miniature Slide Switch

### Specifications

Contact Rating . . . . . refer to ordering scheme  
 Electrical Life . . . . . 30,000 make & break cycles at full load  
 Contact Resistance. . . . . 10 mΩ max. initial @ 2-4 VDC  
 100mA for both silver & gold plated contacts.  
 Insulation Resistance . . . 1000 MΩ min.  
 Dielectric Strength . . . . . 1500 Volts RMS @ sea level  
 Operating Temperature . . -30°C to +85°C  
 Solder Heat Resistance. . . MIL-STD-202, Method 210  
 Actuator Travel . . . . . 25°

### Materials

Case . . . . . Diallyl phthalate (DAP) (UL 94V-0)  
 Slide Handle. . . . . Nylon  
 Housing. . . . . Stainless Steel  
 Terminal Seal . . . . . Epoxy

### 4S1-Series Ordering Scheme

**4S1** - **FSP** **1** - **M6** **Q** **E**

Series      Poles      Circuit      Termination      Contact      Seal      Packaging

#### 1 SERIES

**4S1** Sub-Miniature Slide Switch

#### 2 POLES

**FSP** single pole

#### 3 CIRCUIT

	2-1	2-2	2-3
<b>1</b>	ON	OPEN	ON
<b>3</b>	ON	OFF	ON

#### 4 TERMINATION

**M2** PCB  
**M6** PC Mount, 90° horizontal

#### 5 CONTACT

	Material	Terminal Plating	Rating
<b>G</b>	silver <sup>1</sup>	gold over silver <sup>3</sup>	3A@125VAC or 28VDC; 1.5A @ 250VAC
<b>K</b>	gold <sup>2</sup>	tin-lead <sup>4</sup>	0.4VA max. @20V max (AC/DC)
<b>P</b>	silver <sup>1</sup>	tin-lead <sup>4</sup>	3A@125VAC or 28VDC; 1.5A @ 250VAC
<b>Q</b>	silver <sup>1</sup>	silver <sup>1</sup>	3A@125VAC or 28VDC; 1.5A @ 250VAC
<b>R</b>	gold <sup>2</sup>	gold <sup>2</sup>	0.4VA max. @20V max (AC/DC)

#### NOTE:

Tin-lead option available with PC type terminations only.  
 1 Moveable contact & terminals: copper alloy, silver plate  
 2 Moveable contact & terminals: copper alloy with gold plate over nickel plate  
 3 Terminals: silver plate with outer layer in gold plating

#### 6 EPOXY SEAL

**E** epoxy seal

#### 7 PACKAGING

Switches are bulk packed, unless **T/R** is specified at the end of the part number.  
**T/R** tape reel - 500 pieces per reel

### 4SS-Series Ordering Scheme

4SS - 
 FSP
1 - 
 M6
G
E

1  
Series
2  
Poles
3  
Circuit
4  
Termination
5  
Contact
6  
Seal
7  
Packaging

#### 1 SERIES

**4SS** Sealed Sub-Miniature Slide Switch

#### 2 POLES

**FSP** single pole

#### 3 CIRCUIT

<b>Switching Position:</b>			
	2-1	OPEN	2-3
<b>1</b>	ON	NONE	ON
<b>3</b>	ON	OFF	ON

#### 4 TERMINATION

**Termination options for switches with brick color actuators**

**M2** PCB

**M6** PC Mount, 90° horizontal

**M7** PC Mount, 90° vertical

**Termination options for switches with white color actuators**

**L6** Surface Mount, 90° flat

**S6** Surface Mount, 90° horizontal

**S7** Surface Mount, 90° vertical

#### 5 CONTACT

	<i>Material</i>	<i>Terminal Plating</i>	<i>Rating</i>
<b>G</b>	silver <sup>1</sup>	gold over silver	3A@125VAC or 28VDC; 1.5A @ 250VAC
<b>K</b>	gold <sup>2</sup>	tin-lead <sup>4</sup>	0.4VA max. @20V max (AC/DC)
<b>P</b>	silver <sup>1</sup>	tin-lead	3A@125VAC or 28VDC; 1.5A @ 250VAC
<b>R</b>	gold <sup>2</sup>	gold <sup>2</sup>	0.4VA max. @20V max (AC/DC)

#### NOTE:

Tin-lead option available with PC type terminations only.

1 Moveable contact & terminals: copper alloy, silver plate

2 Moveable contact & terminals: copper alloy with gold plate over nickel plate

3 Terminals: silver plate with outer layer in gold plating

4 Outer terminals: copper alloy with tin-lead over nickel plate

#### 6 EPOXY SEAL

**E** epoxy seal

#### 7 PACKAGING

Switches are bulk packed, unless **T/R** is specified at the end of the part number.

**T/R** tape reel - 500 pieces per reel

### 4M1-Series Ordering Scheme

4M1 - 
 SSP
3 - 
 S1 / 
 2 - 
 M6
Q
E

1  
Series
2  
Poles
3  
Circuit
4  
Actuator
5  
Actuator  
Color
6  
Termination
7  
Contact
8  
Seal

#### 1 SERIES

**4M1** Miniature Slide Switch

#### 2 POLES

**SSP** single pole **SDP** double pole

#### 3 CIRCUIT

<b>Switching Position</b>			
	2-1, 5-4	OPEN	2-3, 5-6
<b>1</b>	ON	NONE	ON
<b>3</b>	ON	OFF	ON

#### 4 ACTUATOR

**S1** .201 [5.10] high

**S2** .285 [7.25] high

**S3** .370 [9.40] high

**S4** .140 [3.55] high

**S5** .053 [1.35] high (for DPDT only)

**S6** .482 [12.25] high

**S7** .311 [7.90] high

**T1** .201 [5.10] high (for DPDT only)

#### 5 ACTUATOR COLOR<sup>1</sup>

<b>1</b> white	<b>3</b> red	<b>5</b> yellow	<b>7</b> blue	<b>9</b> gray
<b>2</b> black	<b>4</b> orange	<b>6</b> green	<b>8</b> brown	

1 White, black & red are standard. Other colors available for quantities of 5K or more.

#### 6 TERMINATION

**M1** Solder Lug

**M2** PCB

**M3** Quick Connect

**M5-1** Wire Wrap .750 [19.05]

**M5-2** Wire Wrap [24.48]

**M5-3** Wire Wrap [10.80]

**M5-4** Wire Wrap [26.97]

**M6** PC Mount, 90° horizontal

**M7** PC Mount, 90° vertical

**VS2** PC Mount, U bracket, .620 mounting x .460 high

#### 7 CONTACT

	<i>Material</i>	<i>Terminal Plating</i>	<i>Rating</i>	<i>Approvals</i>
<b>G</b>	silver <sup>1</sup>	gold over silver <sup>3</sup>	5A@125VAC or 28VDC; 2A @ 250VAC	UL, CSA
<b>K</b>	gold <sup>2</sup>	tin-lead <sup>4</sup>	0.4VA max. @20V max (AC/DC)	
<b>P</b>	silver <sup>1</sup>	tin-lead <sup>4</sup>	5A@125VAC or 28VDC; 2A @ 250VAC	UL, CSA
<b>Q</b>	silver <sup>1</sup>	silver <sup>1</sup>	5A@125VAC or 28VDC; 2A @ 250VAC	UL, CSA
<b>R</b>	gold <sup>2</sup>	gold <sup>2</sup>	0.4VA max. @20V max (AC/DC)	

#### NOTE:

Tin-lead option available with PC type terminations only.

1 Moveable contact & terminals: copper alloy, silver plate

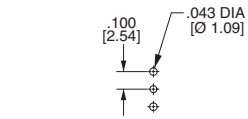
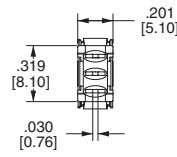
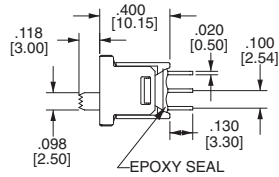
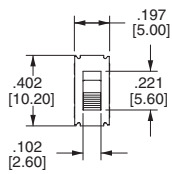
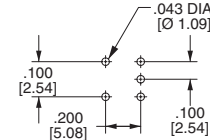
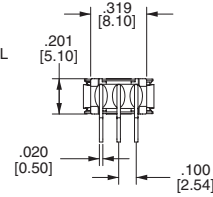
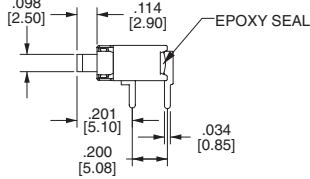
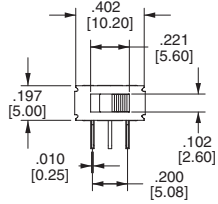
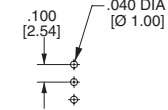
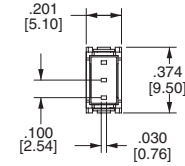
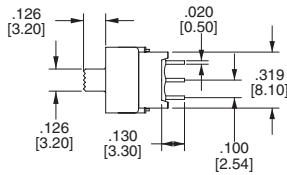
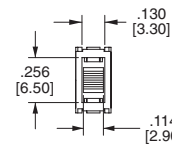
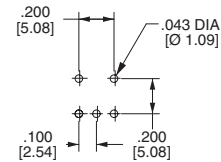
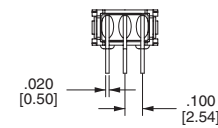
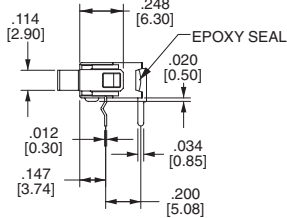
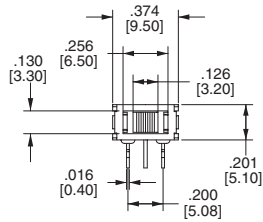
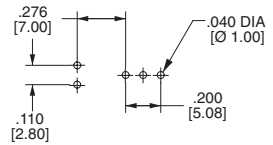
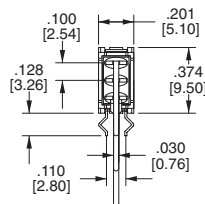
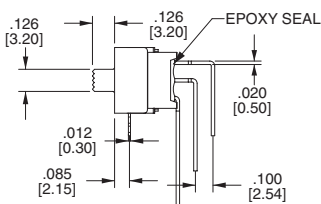
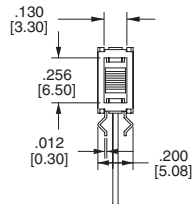
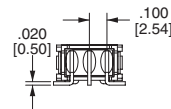
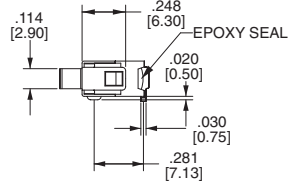
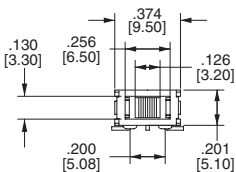
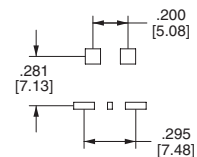
2 Moveable contact & terminals: copper alloy with gold plate over nickel plate

3 Terminals: silver plate with outer layer in gold plating

4 Outer terminals: copper alloy with tin-lead over nickel plate

#### 8 EPOXY SEAL

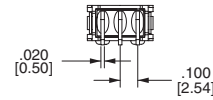
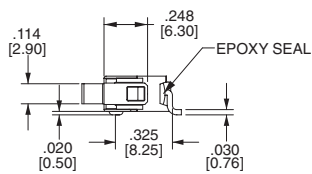
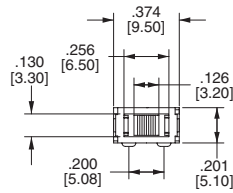
**E** epoxy seal

**4S-Series Dimensional Specifications: in. [mm]**
**4S1-Series**
**TERMINATION**
**PC MOUNTING**
**M2**

**M6**

**4SS-Series**
**TERMINATION**
**PC MOUNTING**
**M2**

**M6**

**M7**

**L6**

**PC MOUNTING**


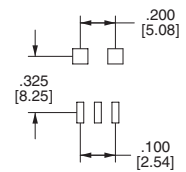
## 4SS-Series Dimensional Specifications: in. [mm]

### TERMINATION

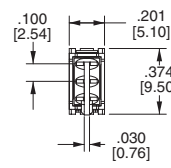
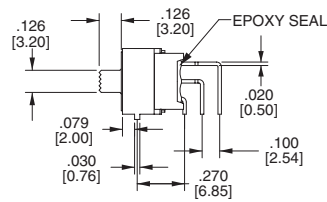
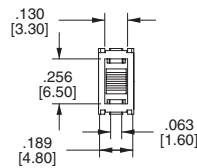
**S6**



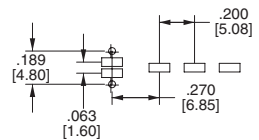
**PC MOUNTING**



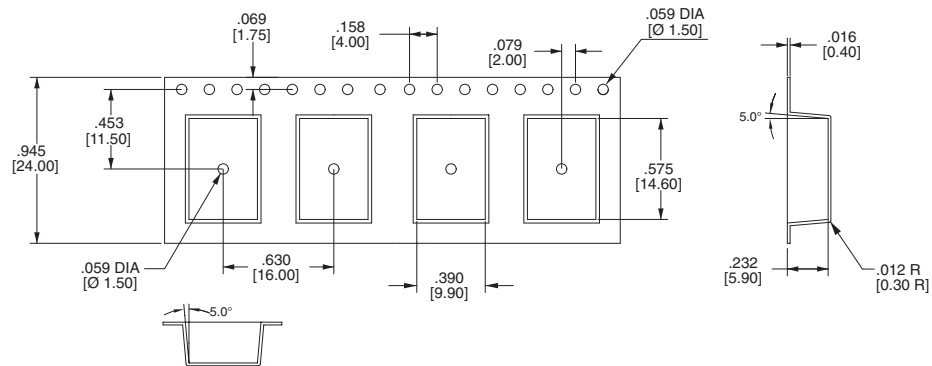
**S7**



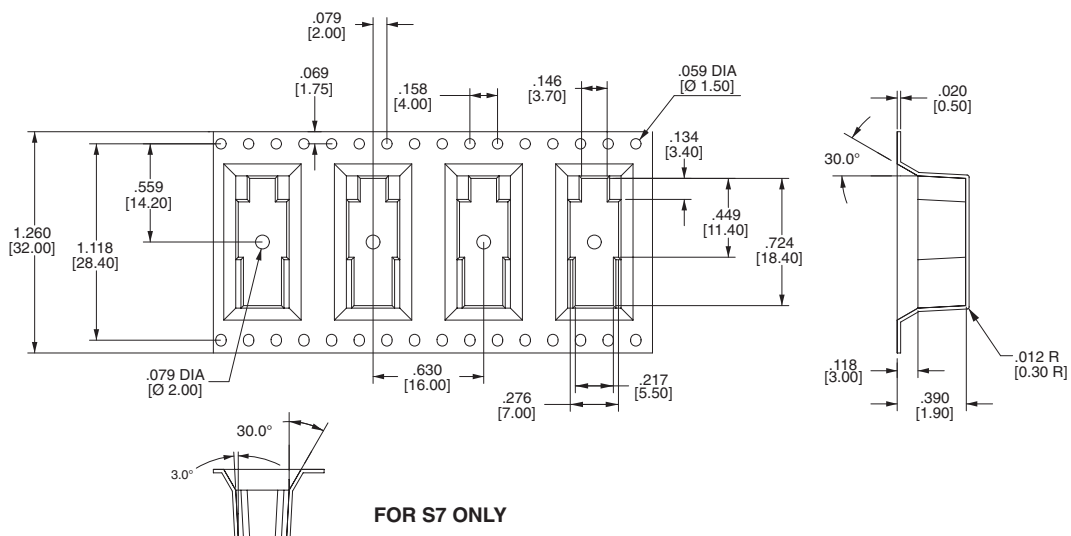
**PC MOUNTING**



### REEL TAPING

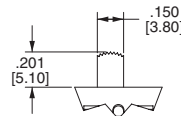
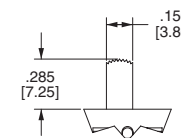
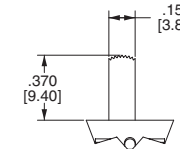
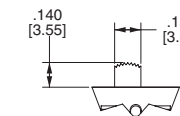
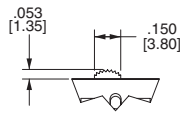
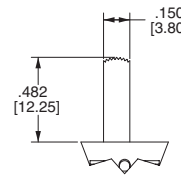
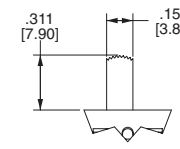
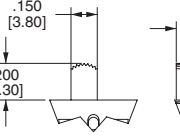


**FOR S6,L6 ONLY**



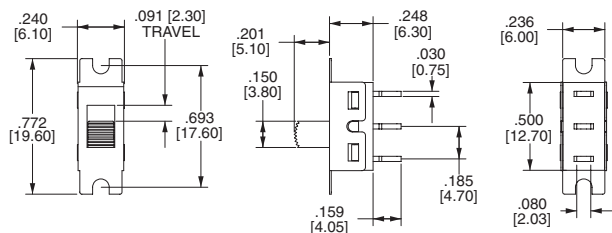
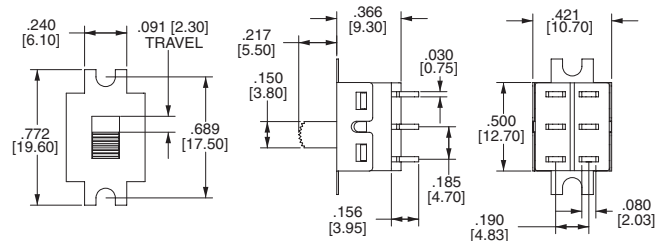
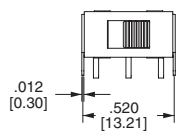
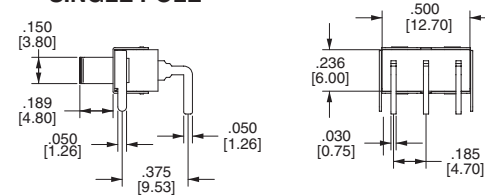
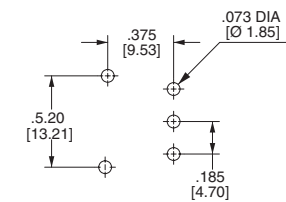
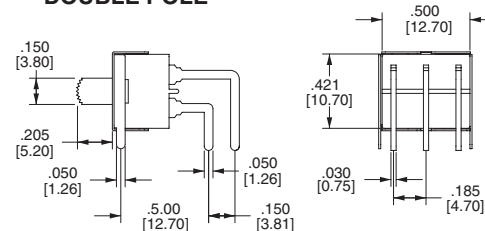
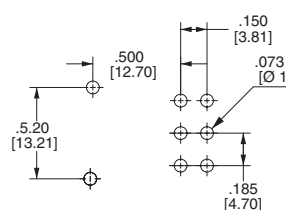
**FOR S7 ONLY**

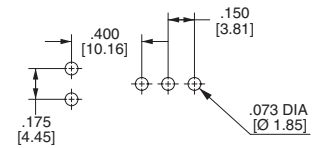
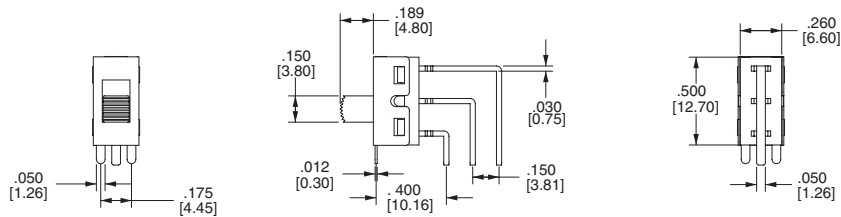
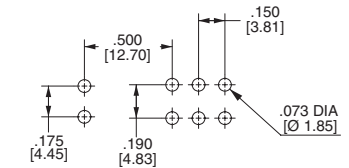
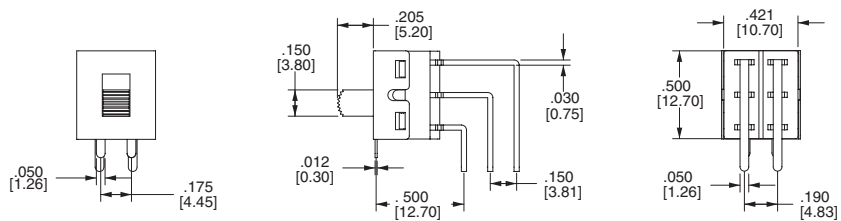
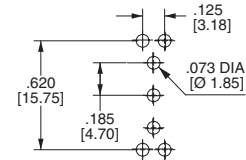
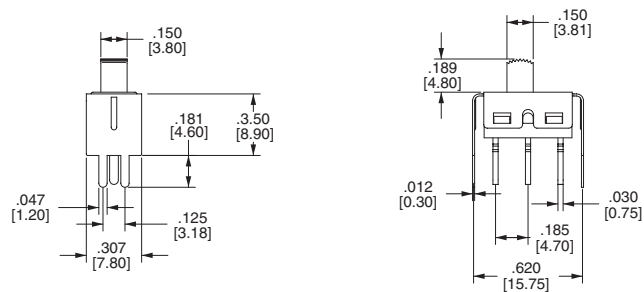
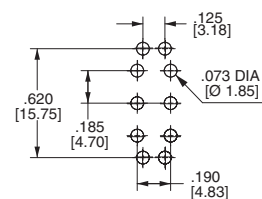
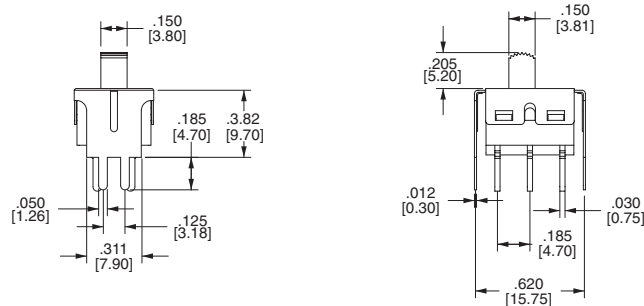
**4M1-Series Dimensional Specifications: in. [mm]**
**ACTUATOR**

<b>S1</b> 	<b>S2</b> 	<b>S3</b> 	<b>S4</b> 
<b>S5 (For DPDT Only)</b> 	<b>S6</b> 	<b>S7</b> 	<b>T1 (For DPDT Only)</b> 

**TERMINATION**

<div><div>M1</div><div>STANDARD</div><div></div><div>THK .030 [0.75]</div></div>	<div><div>M2</div><div></div><div></div><div>THK .030 [0.75]</div></div>	<div><div>M3</div><div>QUICK CONNECT</div><div></div><div>THK .030 [0.75]</div></div>	<div><div>M5</div><div></div><div></div><div>THK .030 [0.75]</div></div>	<table><tr><th>OPTION CODE</th><th>DIM. "A"</th></tr><tr><td>M5-1</td><td>.750 [19.05]</td></tr><tr><td>M5-2</td><td>.964 [24.48]</td></tr><tr><td>M5-3</td><td>.425 [10.80]</td></tr><tr><td>M5-4</td><td>1.062 [26.97]</td></tr></table>	OPTION CODE	DIM. "A"	M5-1	.750 [19.05]	M5-2	.964 [24.48]	M5-3	.425 [10.80]	M5-4	1.062 [26.97]
OPTION CODE	DIM. "A"													
M5-1	.750 [19.05]													
M5-2	.964 [24.48]													
M5-3	.425 [10.80]													
M5-4	1.062 [26.97]													

**SINGLE POLE**

**DOUBLE POLE**

**M6**

**SINGLE POLE**

**PC MOUNTING**

**DOUBLE POLE**

**PC MOUNTING**


**4M1-Series Dimensional Specifications: in. [mm]**
**TERMINATION**
**M7**
**SINGLE POLE**
**PC MOUNTING**

**DOUBLE POLE**
**PC MOUNTING**

**VS2**
**SINGLE POLE**
**PC MOUNTING**

**DOUBLE POLE**
**PC MOUNTING**


# Mouser Electronics

Authorized Distributor

Click to View Pricing, Inventory, Delivery & Lifecycle Information:

[Carling Technologies:](#)

[4S1-FSP1-M2RE](#) [4M1-SSP1-S1/1-M1QE](#) [4M1-SSP1-S1/1-M2QE](#) [4M1-SSP1-S1/1-M2RE](#) [4M1-SSP1-S1/1-M6RE](#)