



PAR12-105-P7M

3.7 m | 12 ft Parabolic Unshielded Antenna for Relocation-Category A, single-polarized, 10.500–10.700 GHz, CPR90G, gray antenna, with flash, standard pack—two-piece reflector

Product Classification

Product Type	Microwave antenna
--------------	-------------------

General Specifications

Antenna Type	PAR - Parabolic Unshielded Antenna for Relocation-Category A, single-polarized
Diameter, nominal	3.7 m 12 ft
Packing	Standard pack
Reflector Construction	Two-piece reflector
Antenna Input	CPR90G
Antenna Color	Gray
Antenna Type	PAR - Parabolic Unshielded Antenna for Relocation-Category A, single-polarized
Diameter, nominal	3.7 m 12 ft
Flash Included	Yes
Polarization	Single

Electrical Specifications

Operating Frequency Band	10.500 – 10.700 GHz
Beamwidth, Horizontal	0.7 °
Beamwidth, Vertical	0.7 °
Cross Polarization Discrimination (XPD)	30 dB
Front-to-Back Ratio	65 dB
Gain, Low Band	49.2 dBi
Gain, Mid Band	49.3 dBi
Gain, Top Band	49.4 dBi
Operating Frequency Band	10.500 – 10.700 GHz
Return Loss	30.7 dB
VSWR	1.06

Mechanical Specifications

Fine Azimuth Adjustment	±5°
Fine Elevation Adjustment	±5°
Mounting Pipe Diameter	115 mm 4.5 in
Net Weight	245 kg 540 lb
Side Struts, Included	1 inboard 1 outboard

PAR12-105-P7M

Side Struts, Optional	2 outboard
Wind Velocity Operational	110 km/h 68 mph
Wind Velocity Survival Rating	200 km/h 124 mph

Wind Forces At Wind Velocity Survival Rating

Angle α for MT Max	-125 °
Axial Force (FA)	34587 N 7775 lbf
Side Force (FS)	9441 N 2122 lbf
Twisting Moment (MT)	-15900 N•m
Weight with 1/2 in (12 mm) Radial Ice	528 kg 1164 lb
Zcg with 1/2 in (12 mm) Radial Ice	566 mm 22 in
Zcg without Ice	483 mm 19 in

PAR12-105-P7M

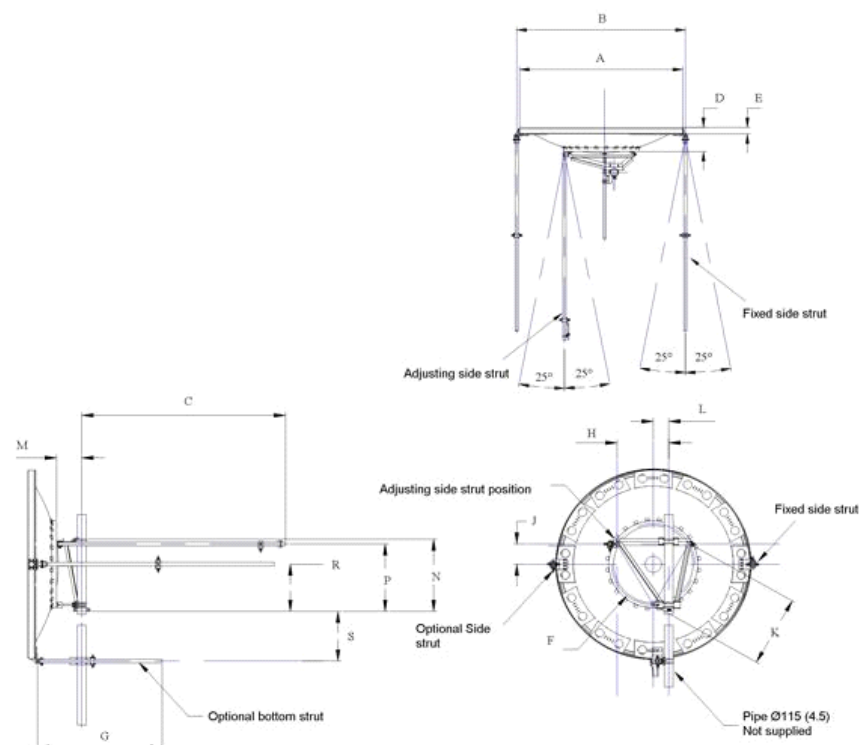
Wind Forces At Wind Velocity Survival Rating Image



Packed Dimensions

Gross Weight, Packed Antenna	541.0 kg		1192.7 lb
Height	2140.0 mm		84.3 in
Length	3990.0 mm		157.1 in
Volume	9.1 m ³		
Width	1070.0 mm		42.1 in

Antenna Dimensions And Mounting Information



ANTENNA DIMENSIONS			
All dimensions in mm (inches)			
A	3775 (148.5)	J	355 (14.0)
B	3915 (154.5)	K	1205 (47.5)
C	3050 (120)	L	215 (8.5)
D	685 (27.0)	M	330 (13)
E	145 (5.75)	N	1225 (48.25)
F	1430 (56.25)	P	1145 (45.0)
G	1525 (60)	R	790 (31.0)
H	835 (32.75)	S	1140 (44.75)

Regulatory Compliance/Certifications

Agency

ISO 9001:2008

Classification

Designed, manufactured and/or distributed under this quality management system

Included Products

PAR12-105 (Product Component—not orderable) — 3.7 m | 12 ft Parabolic Unshielded Antenna for Relocation-Category A, single-polarized, 10.500–10.700 GHz

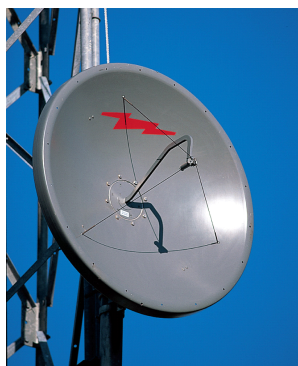
* Footnotes

Axial Force (FA)

Maximum forces exerted on a supporting structure as a result of wind from the most critical direction for this parameter. The individual maximums specified may not occur simultaneously. All forces are referenced to the mounting pipe.

PAR12-105-P7M

Cross Polarization Discrimination (XPD)	The difference between the peak of the co-polarized main beam and the maximum cross-polarized signal over an angle twice the 3 dB beamwidth of the co-polarized main beam.
Front-to-Back Ratio	Denotes highest radiation relative to the main beam, at $180^{\circ} \pm 40^{\circ}$, across the band. Production antennas do not exceed rated values by more than 2 dB unless stated otherwise.
Gain, Mid Band	For a given frequency band, gain is primarily a function of antenna size. The gain of Andrew antennas is determined by either gain by comparison or by computer integration of the measured antenna patterns.
Operating Frequency Band	Bands correspond with CCIR recommendations or common allocations used throughout the world. Other ranges can be accommodated on special order.
Packing	Andrew standard packing is suitable for export. Antennas are shipped as standard in totally recyclable cardboard or wire-bound crates (dependent on product). For your convenience, Andrew offers heavy duty export packing options.
Return Loss	The figure that indicates the proportion of radio waves incident upon the antenna that are rejected as a ratio of those that are accepted.
Side Force (FS)	Maximum side force exerted on the mounting pipe as a result of wind from the most critical direction for this parameter. The individual maximums specified may not occur simultaneously. All forces are referenced to the mounting pipe.
Twisting Moment (MT)	Maximum forces exerted on a supporting structure as a result of wind from the most critical direction for this parameter. The individual maximums specified may not occur simultaneously. All forces are referenced to the mounting pipe.
VSWR	Maximum; is the guaranteed Peak Voltage-Standing-Wave-Ratio within the operating band.
Wind Velocity Operational	The wind speed where the antenna deflection is equal to or less than 0.1 degrees. In the case of ValuLine antennas, it is defined as a maximum deflection of 0.3 x the 3 dB beam width of the antenna.
Wind Velocity Survival Rating	The maximum wind speed the antenna, including mounts and radomes, where applicable, will withstand without permanent deformation. Realignment may be required. This wind speed is applicable to antenna with the specified amount of radial ice.



PAR12-105

3.7 m | 12 ft Parabolic Unshielded Antenna for Relocation-Category A, single-polarized, 10.500–10.700 GHz

General Specifications

Antenna Type	PAR - Parabolic Unshielded Antenna for Relocation-Category A, single-polarized
Diameter, nominal	3.7 m 12 ft
Polarization	Single

Electrical Specifications

Beamwidth, Horizontal	0.7 °
Beamwidth, Vertical	0.7 °
Cross Polarization Discrimination (XPD)	30 dB
Front-to-Back Ratio	65 dB
Gain, Low Band	49.2 dBi
Gain, Mid Band	49.3 dBi
Gain, Top Band	49.4 dBi
Operating Frequency Band	10.500 – 10.700 GHz
Return Loss	30.7 dB
VSWR	1.06

Mechanical Specifications

Fine Azimuth Adjustment	±5°
Fine Elevation Adjustment	±5°
Mounting Pipe Diameter	115 mm 4.5 in
Net Weight	245 kg 540 lb
Side Struts, Included	1 inboard 1 outboard
Side Struts, Optional	2 outboard
Wind Velocity Operational	110 km/h 68 mph
Wind Velocity Survival Rating	200 km/h 124 mph

Wind Forces At Wind Velocity Survival Rating

Angle α for MT Max	-125 °
Axial Force (FA)	34587 N 7775 lbf
Side Force (FS)	9441 N 2122 lbf
Twisting Moment (MT)	-15900 N•m
Weight with 1/2 in (12 mm) Radial Ice	528 kg 1164 lb
Zcg with 1/2 in (12 mm) Radial Ice	566 mm 22 in

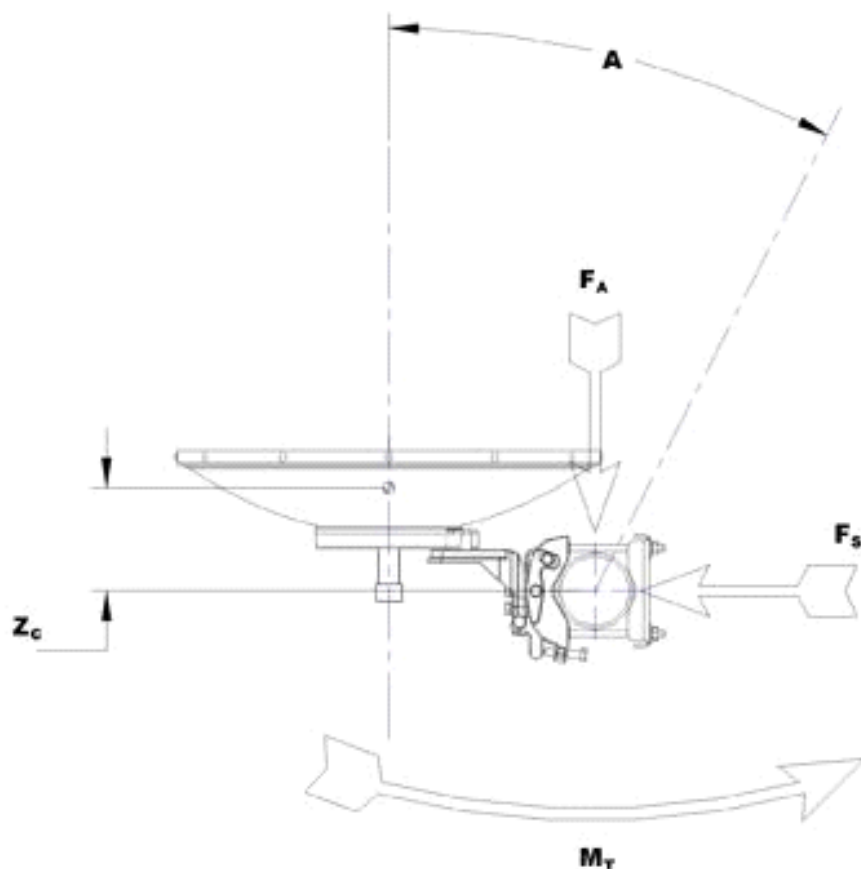
PAR12-105

Zcg without Ice

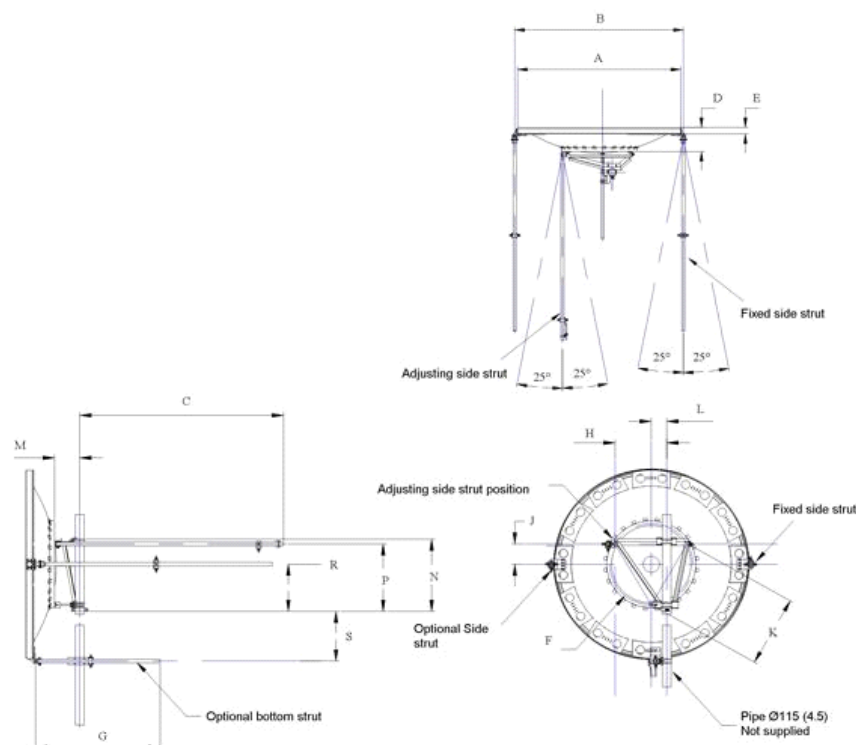
483 mm | 19 in

PAR12-105

Wind Forces At Wind Velocity Survival Rating Image



Antenna Dimensions And Mounting Information



ANTENNA DIMENSIONS			
All dimensions in mm (inches)			
A	3775 (148.5)	J	355 (14.0)
B	3915 (154.5)	K	1205 (47.5)
C	3050 (120)	L	215 (8.5)
D	685 (27.0)	M	330 (13)
E	145 (5.75)	N	1225 (48.25)
F	1430 (56.25)	P	1145 (45.0)
G	1525 (60)	R	790 (31.0)
H	835 (32.75)	S	1140 (44.75)

* Footnotes

Axial Force (FA)	Maximum forces exerted on a supporting structure as a result of wind from the most critical direction for this parameter. The individual maximums specified may not occur simultaneously. All forces are referenced to the mounting pipe.
Cross Polarization Discrimination (XPD)	The difference between the peak of the co-polarized main beam and the maximum cross-polarized signal over an angle twice the 3 dB beamwidth of the co-polarized main beam.
Front-to-Back Ratio	Denotes highest radiation relative to the main beam, at $180^\circ \pm 40^\circ$, across the band. Production antennas do not exceed rated values by more than 2 dB unless stated otherwise.
Gain, Mid Band	For a given frequency band, gain is primarily a function of antenna size. The gain of Andrew antennas is determined by either gain by comparison or by computer integration of the measured antenna patterns.
Operating Frequency Band	Bands correspond with CCIR recommendations or common allocations used

PAR12-105

	throughout the world. Other ranges can be accommodated on special order.
Return Loss	The figure that indicates the proportion of radio waves incident upon the antenna that are rejected as a ratio of those that are accepted.
Side Force (FS)	Maximum side force exerted on the mounting pipe as a result of wind from the most critical direction for this parameter. The individual maximums specified may not occur simultaneously. All forces are referenced to the mounting pipe.
Twisting Moment (MT)	Maximum forces exerted on a supporting structure as a result of wind from the most critical direction for this parameter. The individual maximums specified may not occur simultaneously. All forces are referenced to the mounting pipe.
VSWR	Maximum; is the guaranteed Peak Voltage-Standing-Wave-Ratio within the operating band.
Wind Velocity Operational	The wind speed where the antenna deflection is equal to or less than 0.1 degrees. In the case of ValuLine antennas, it is defined as a maximum deflection of 0.3 x the 3 dB beam width of the antenna.
Wind Velocity Survival Rating	The maximum wind speed the antenna, including mounts and radomes, where applicable, will withstand without permanent deformation. Realignment may be required. This wind speed is applicable to antenna with the specified amount of radial ice.