

Ceramic Monoblock Duplex Filter

CTS

WIRELESS COMPONENTS

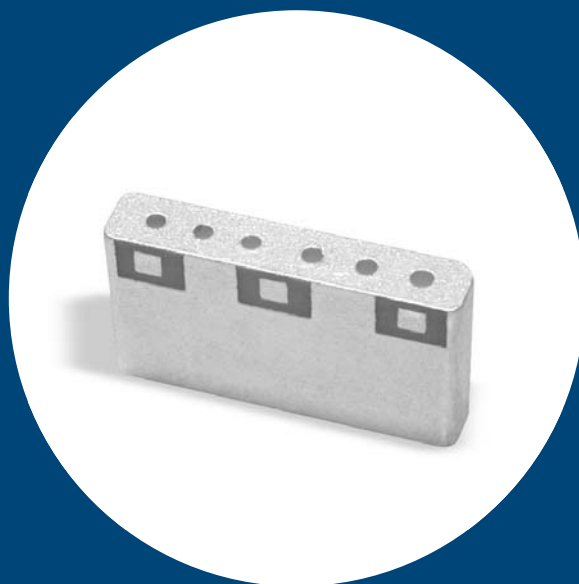
Model KFF6669A Technical Data

Features:

- Very Small Size
- High Performance
- SMD

Description and Applications:

This monoblock Duplex filter is designed for all W-CDMA applications at 1920 - 2170 MHz.



Electrical Specifications

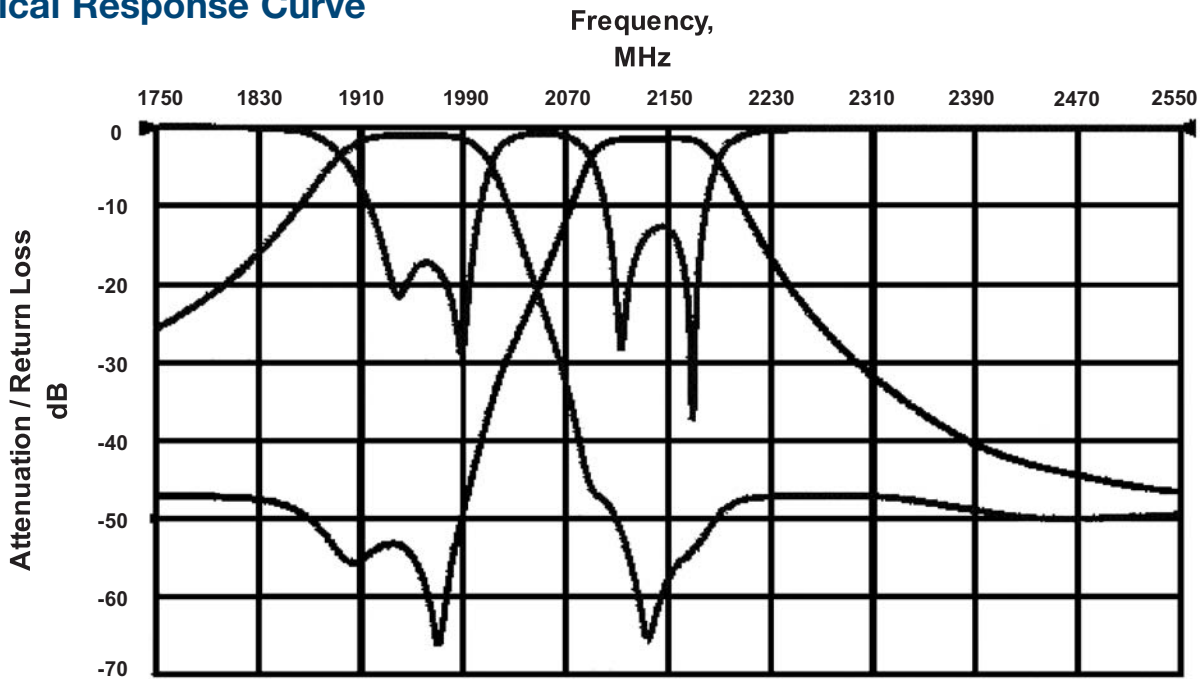
TX to Antenna Response	Frequency	Specifications @ 25° C
Insertion Loss	1920 MHz to 1980 MHz	1.4 dB max.
Return Loss @ TX		10.5 dB min.
Return Loss @ ANT		10.5 dB min.
Attenuation	2110 MHz to 2170 MHz	46.0 dB min.
Attenuation	2300 MHz to 2360 MHz	40.0 dB min.
Attenuation	3840 MHz to 3960 MHz	25.0 dB min.
Attenuation	5760 MHz to 5940 MHz	20.0 dB min.
Antenna to RX Response	Frequency	Specifications @ 25° C
Insertion Loss	2110 MHz to 2170 MHz	2.0 dB max.
Return Loss @ RX		10.5 dB min.
Return Loss @ ANT		10.5 dB min.
Attenuation	1920 MHz to 1980 MHz	51.0 dB min.
Attenuation	2300 MHz to 2360 MHz	25.0 dB min.
Attenuation	2490 MHz to 2550 MHz	42.0 dB min.
Attenuation	3840 MHz to 3960 MHz	20.0 dB min.
TX to RX Response	Frequency	Specifications @ 25° C
Rejection @ TX band	1920 MHz to 1980 MHz	51.0 dB min.
Rejection @ RX band	2110 MHz to 2170 MHz	48.0 dB min.
Power Rating		2W
Impedance		50Ω

NOTE: Supplier shall test each filter to the critical electrical specifications listed above or better. Any subsequent audits may deviate due to measurement repeatability among different test systems. Such deviations shall not exceed the following limits:

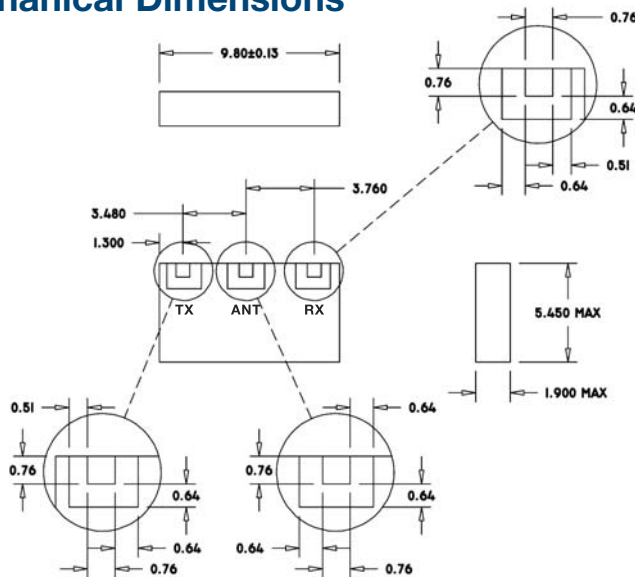
Specification	Typical Allowance
Insertion Loss	0.1dB
Return Loss	1.0dB
Stopbands	1.0dB

Rev. 1

Typical Response Curve

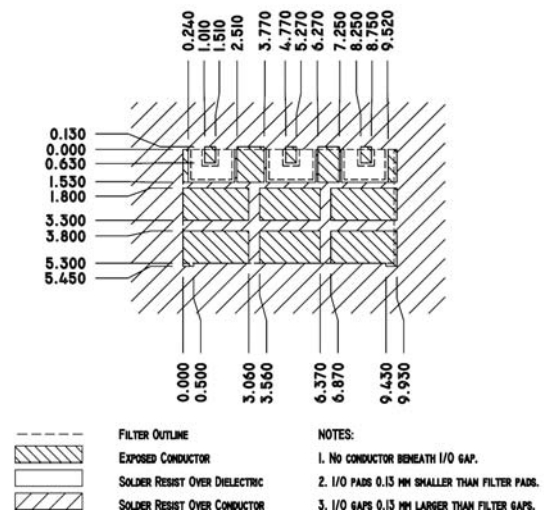


Mechanical Dimensions

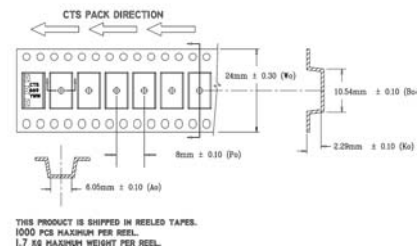


NOTE: TOLERANCES ARE ± 0.13 UNLESS NOTED OTHERWISE.
DIMENSIONS ARE IN MILLIMETERS.

PC Board Layout



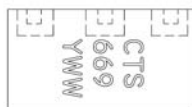
Packaging



THIS PRODUCT IS SHIPPED IN REELED TAPES.
1000 PCS MAXIMUM PER REEL.
1.7 KG MAXIMUM WEIGHT PER REEL.

Part Marking

Y = LAST DIGIT OF YEAR
WW = SEQUENTIAL WEEK NUMBER



Contact Information:

CTS WIRELESS COMPONENTS, INC. / 171 Covington Drive / Bloomingdale, IL 60108
PHONE: (800) 757-6686 / www.ctscorp.com

Document Control #6287091Y01 Rev 1

Date of Origin 07/23/01

Date of Revision 07/23/01

THIS DATA SHEET IS NOT AN OFFER FOR SALE AND SHALL NOT OBLIGATE CTS TO SELL THE PRODUCTS DESCRIBED HEREIN OR ANY OTHER PRODUCTS. CTS MAY, IN ITS SOLE DISCRETION, MODIFY OR DISCONTINUE THE SALE OF ITS PRODUCTS AT ANY TIME WITHOUT NOTICE. CTS MAKES NO WARRANTY, INCLUDING WARRANTIES OF MERCHANTABILITY OR FITNESS FOR A PARTICULAR PURPOSE, WITH RESPECT TO THE PRODUCTS REFERENCED OR INFORMATION PROVIDED HEREIN.

CTS® is a registered trademark of CTS Corporation.