

EMC Components

EMC Filters for AC Power Supply Inlet-Socket with Fuse

ZUB.U-H, ZUB.D-H Series

FEATURES

- Either single fuse filters(U type) or double fuse filters(D type).
- Superior attenuation of common-mode noise due to the use of a feed-through capacitor.
- Internal fuse simplifies maintenance(Without spare fuse).
- Leakage current is maintained below 0.5mA.
- Uses Faston® #250 output terminals, simplifying handling and maintenance, and permitting soldering.

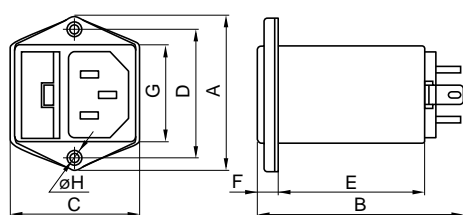
APPLICATIONS

Computer terminals, various types of office automation equipment, digital devices(ECRs, etc.), measurement equipment, medical equipment, etc.

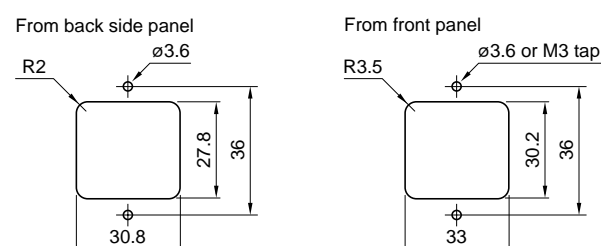
SAFETY STANDARDS

Part No.	UL(NRTL)	CSA	NEMKO
ZUB-H	2500008659	LR76849C	P01101441

SHAPES AND DIMENSIONS



Typical dimensions for installation



- Tighten the panel mounting M3 dia. bolt with the torque under $5.88 \times 10^{-1} \text{ N} \cdot \text{m}$.

Dimensions in mm								
Series	A	B	C	D	E	F	G	øH
ZUB-U-H	44	68	37	36	41	6	27	3.5
ZUB-D-H	44	77	37	36	41	15	27	3.5

- Case: metal, input terminal: inlet-socket(EN60320), output terminal: Faston® #250(t:0.8mm)

ELECTRICAL CHARACTERISTICS

Part No.	ZUB2203U-H	ZUB2206U-H	ZUB2210U-H
Rated voltage Eac (V)	250	250	250
Rated current (A)	3	6	10
Test voltage Eac (V) [Between terminal and ground terminal]	1500	1500	1500
Insulation resistance (MΩ)	100min.	100min.	100min.
[DC.500V, 1min/between terminal and ground terminal]			
Leakage current (mA) [250V • 60Hz]	0.5max.	0.5max.	0.5max.
DC resistance (mΩ)	150max.	100max.	70max.
Operating temperature range (°C)[Including self-temperature rise]	-25 to +85	-25 to +85	-25 to +85
With derating over(°C)	55	55	55
Temperature rise (°C)	30max.	30max.	30max.
Attenuation frequency range	Differential mode 30dB	3 to 1000	6 to 1000
(MHz) [+5 to +35°C]	Common-mode 30dB	1 to 1000	20 to 1000
Weight (g)	76	76	76

Part No.	ZUB2203D-H	ZUB2206D-H	ZUB2210D-H
Rated voltage Eac (V)	250	250	250
Rated current (A)	3	6	10
Test voltage Eac (V) [Between terminal and ground terminal]	1500	1500	1500
Insulation resistance (MΩ)	100min.	100min.	100min.
[DC.500V, 1min/between terminal and ground terminal]			
Leakage current (mA) [250V • 60Hz]	0.5max.	0.5max.	0.5max.
DC resistance (mΩ)	150max.	100max.	70max.
Operating temperature range (°C)[Including self-temperature rise]	-25 to +85	-25 to +85	-25 to +85
With derating over(°C)	55	55	55
Temperature rise (°C)	30max.	30max.	30max.
Attenuation frequency range	Differential mode 30dB	3 to 1000	6 to 1000
(MHz) [+5 to +35°C]	Common-mode 30dB	1 to 1000	20 to 1000
Weight (g)	80	80	80

- Faston® is a registered trademark of Tyco Electronics AMP Corp. Incorporated.

EMC Components

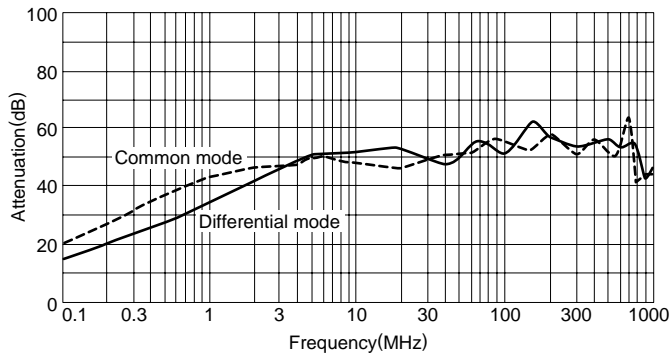
EMC Filters for AC Power Supply Inlet-Socket with Fuse

ZUB.U-H, ZUB.D-H Series

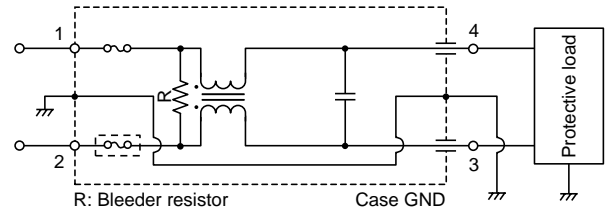
TYPICAL ELECTRICAL CHARACTERISTICS

ATTENUATION vs. FREQUENCY CHARACTERISTICS

ZUB2203U-H/D-H

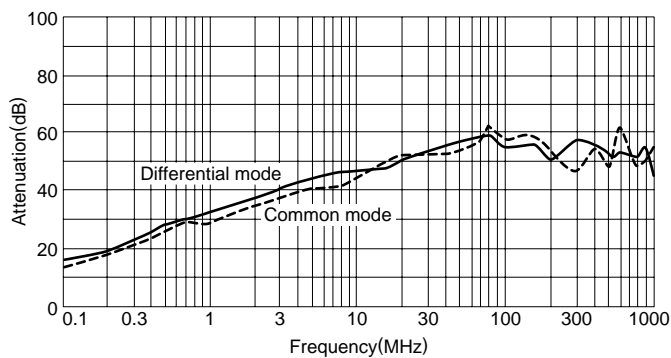


CIRCUIT DIAGRAM



- The U type lacks a fuse within the circuit region indicated by the dashed line.

ZUB2206U-H/D-H



ZUB2210U-H/D-H

