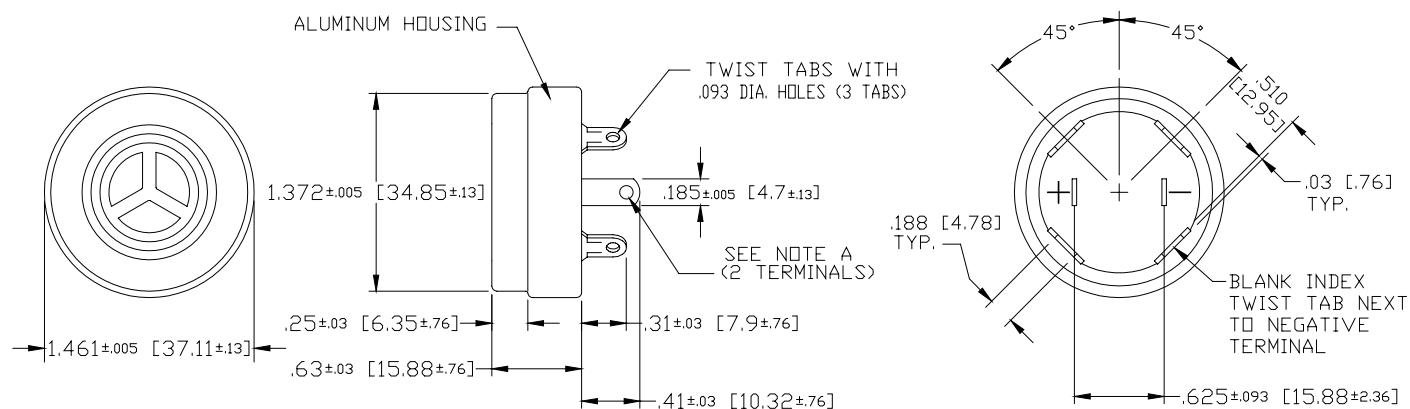


Sales Outline Drawing

OBSOLETE- No Direct Replacement. Substitutes Include: SBM428 & SC628
Specifications:

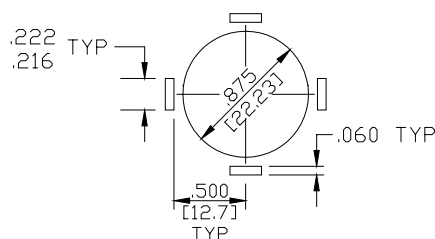
Sound level Category	Low Sound Level
Mode of Operation	Continuous
Mounting	Panel (see note B)
Voltage Rating	20 - 30 Vdc
Frequency	3500 Hz \pm 500 Hz
Loudness (Min. Voltage)	70 dB(A) min. @ 2 FT and 20 Vdc
Loudness (Max Voltage)	76 dB(A) min. @ 2FT and 30 Vdc
Current Draw	18 mA Max @ 20 Vdc
Current Draw	26 mA Max @ 30 Vdc
Storage Temperature	-40°C to +85°C
Operating Temperature	-30°C to +65°C
Weight (Typical)	0.6 oz (17 g)
Housing	Clear Aluminum
Options	For other options contact factory

Dimensions: Inches (mm)



NOTE A:
 TERMINALS - .032 STEEL, TIN PLATED WITH .093 DIA. WIRE HOLE, WILL ACCEPT STANDARD 3/16" QUICK CONNECT

NOTE B:
 MOUNTING - CHASSIS CUT-OUT FOR DIRECT MOUNTING - FOUR TWIST TABS PER EIA STD RS395 ARE PROVIDED. TERMINALS ARE ELECTRICALLY ISOLATED FROM CASE AND TWIST TABS.



Mouser Electronics

Authorized Distributor

Click to View Pricing, Inventory, Delivery & Lifecycle Information:

[Mallory Sonalert:](#)

[SC24](#)