

SPECIFICATIONS

Mechanical

Operating Force & Durability: 100±30gf 1000000 Cycles
 160±50gf 1000000 Cycles
 260±80gf 100000 Cycles

Travel: 0.25+0.2/-0.1mm

Return Force: 25gf min.

Electrical

Rating: 50mA max.

Contact Resistance: 100mW max.

Insulation Resistance: 100MW min.

Dielectric Withstanding Voltage: 250V AC for 1 Minute

Bounce: 5ms max.

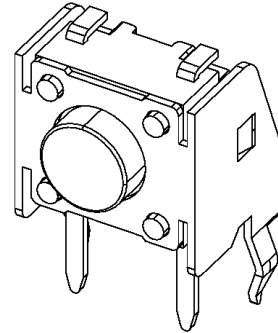
Physical

Operating Temperature: -20°C to +70°C

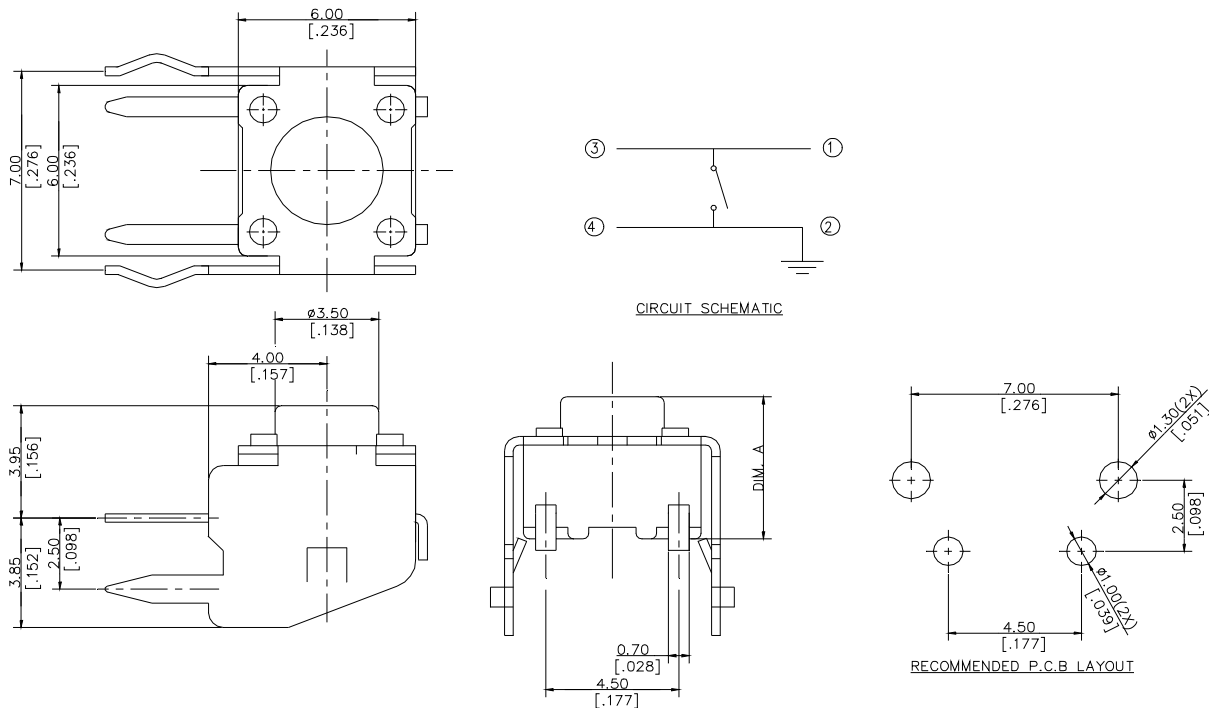
Tact Switch

1BT003 Series

Right Angle, T/H Type



DRAWING



ORDERING INFORMATION

PRODUCT NO.: 1BT003-2 * * 3 * - * * *

Switch Series
 Tact Type
 Product Series
 Prod. Size: 2=6.0mm*6.0mm
 Total Height
 5=4.3mm
 6=5.0mm
 7=7.0mm

Modification Code
 None=w/o Ground
 001=w/ Ground

Plating:
 0=Standard

Terminal:
 3=R/A T/H

Operating Force:
 1=100gf
 2=160gf

1BT003-25130	100±30gf	4.3
1BT003-25230	160±50gf	4.3
1BT003-25330	260±80gf	4.3
1BT003-25430	520±80gf	4.3
1BT003-26130	100±30gf	5.0
1BT003-26230	160±50gf	5.0
1BT003-26330	260±80gf	5.0
1BT003-26430	520±80gf	5.0
1BT003-27130	100±30gf	7.0
1BT003-27230	160±50gf	7.0
1BT003-27330	260±80gf	7.0
1BT003-27430	520±80gf	7.0
P/N	OPERATING FORCE	DIM. A