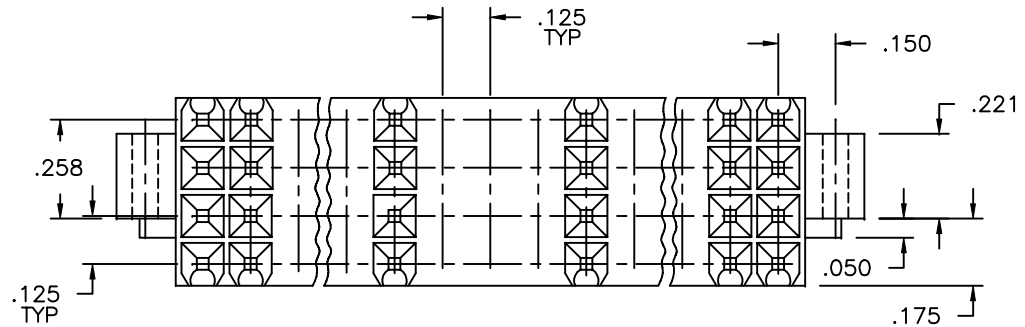
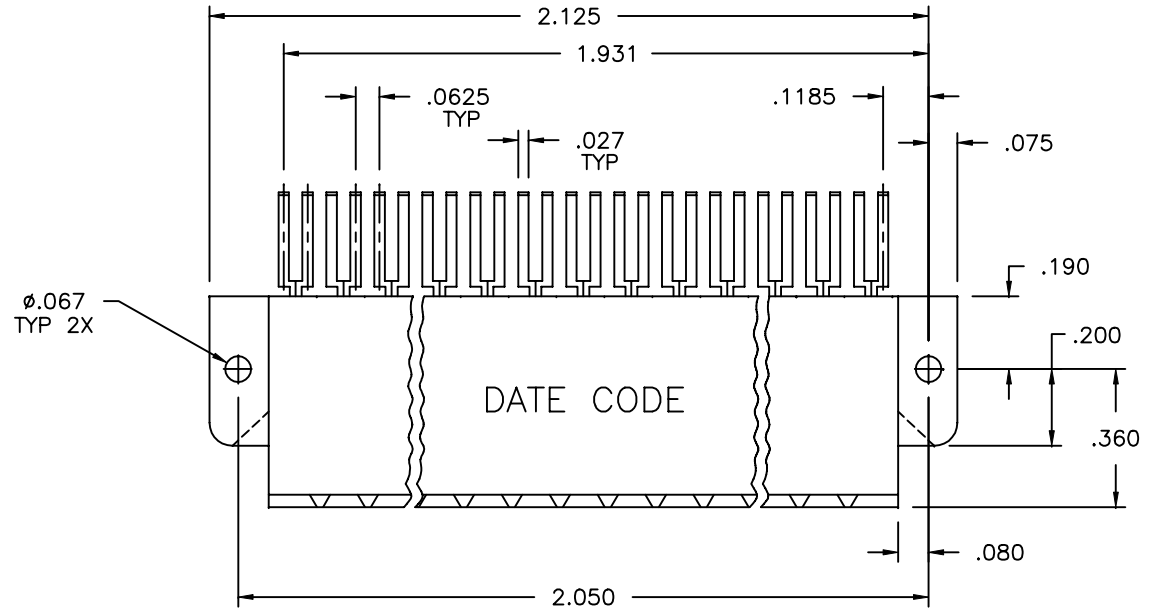
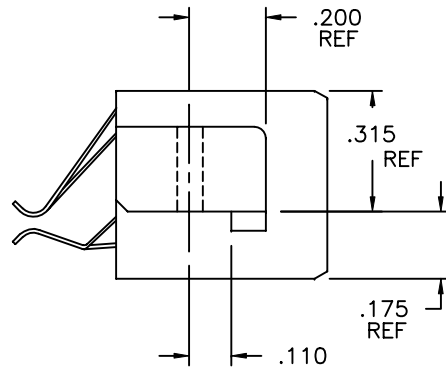



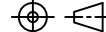

Tous droits strictement reserves. Reproduction ou communication a des tiers
interdite sous quelque forme que ce soit sans autorisation ecrite du proprietaire.
Propriete de c FCI. Droits de reproduction FCI.

All rights strictly reserved. Reproduction or issue to third parties in any
form whatever is not permitted without written authority from the proprietor.
Property of FCI. Copyright FCI.



PRODUCT NUMBER
73604-001



mat'l. code				tolerances unless otherwise specified			CUSTOMER COPY		 Electronics FCI www.fciconnect.com											
ltr	ecn no	dr	date	linear				projection 	title 963C2-60 CIRCUIT PACK CONNECTOR											
A	V71020	LSS	7/14/97																	
B	V20151	CGD	1/23/02	angles				INCH 	product family FASTECH										code	
									size dwg no										213	
				enrg	S. HEADER	3/14/97	scale 1:1	A	73604										sheet	
				chr	S. HEADER	3/14/97													1 of 3	
				appd	S. HEADER	3/14/97														
sheet index	revision sheet	B 1	B 2	B 3																

1 | 2

ACAD

PDM: Rev:B

3 |

STATUS: Released

cage code
22536
Printed Mar 05, 2003

4

CONN. CODE	CAVITIES EQUIPPED WITH CONTACTS
963C2-60	000-014, 100-114, 200-214, 300-314

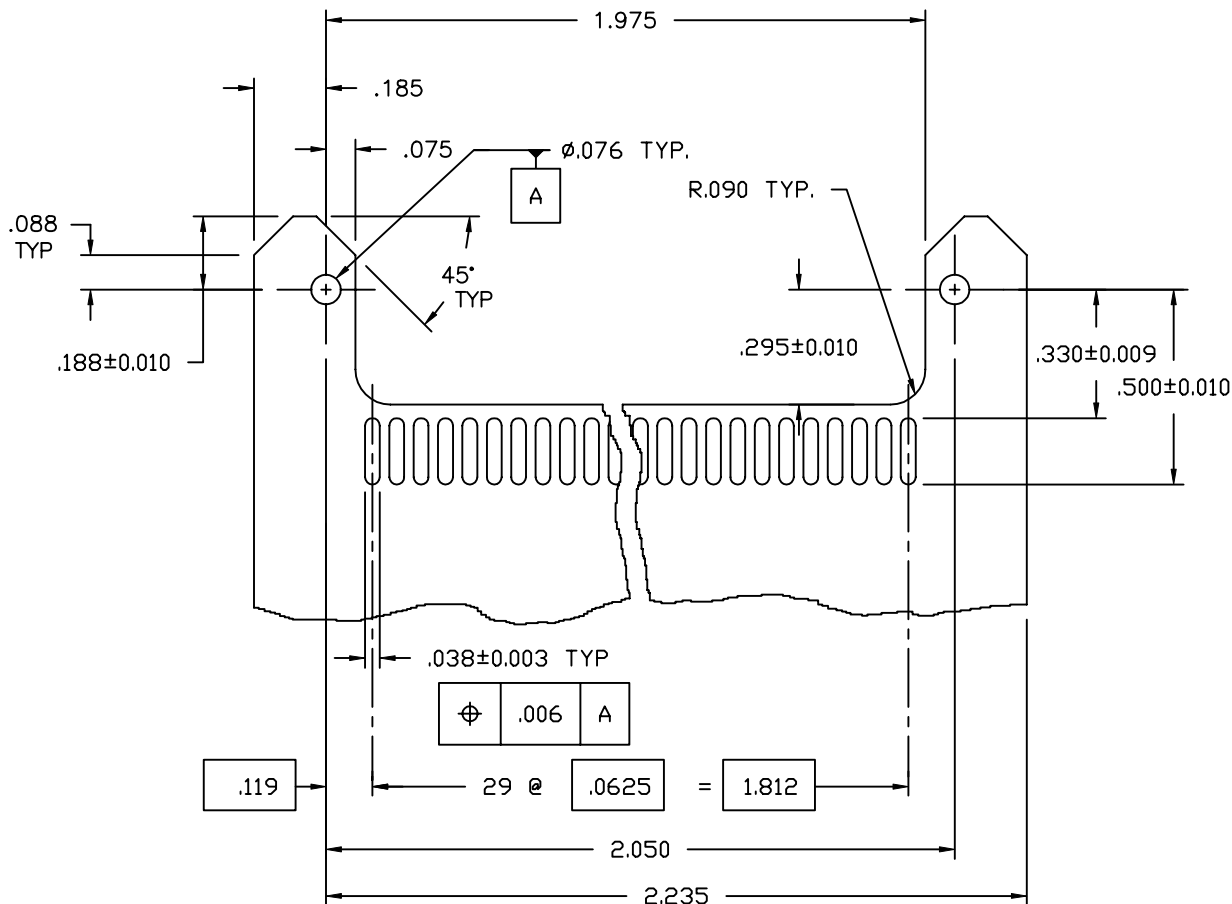


1. HOUSING MATERIAL : PPS - 40% GLASS FILLED.
2. CONTACT MATERIAL :
BASE : C72500, CONTACT : 25u" MIN DGR-156, TAIL : SOLDER DIPPED
3. TWO #1-32 X 5/16" SELF-THREADED (BF+) SCREWS REQUIRED FOR ASSEMBLY TO PCB.
4. AS VIEWED FROM THE MATING FACE OF THE CONNECTOR WITH THE CODE MARK UP, EACH CAVITY (EVEN IF NO CONTACT IS PRESENT) IS DESIGNATED BY A THREE DIGIT NUMBER. THE TOP ROW IS NUMBERED RIGHT TO LEFT FROM 000 TO 014, THE SECOND ROW FROM 100 TO 114, THE THIRD ROW FROM 200 TO 214, AND THE BOTTOM ROW FROM 300 TO 314.

[illegible]



PRODUCT NUMBER
73604-001



RECOMMENDED PC BOARD FOOTPRINT

NOTES :

1. THE CORRESPONDING CONNECTOR CONTACT POSITIONS FOR THE LANDS FROM LEFT TO RIGHT ON THE COMPONENT SIDE ARE AS FOLLOWS :
000, 100, 001, 101, 002, 102, ETC. FOR THE NON-COMPONENT SIDE LANDS
CORRESPONDING CONNECTOR CONTACT POSITIONS STARTING FROM THE
SAME END ARE AS FOLLOWS : 200, 300, 201, 301, 202, 302, ETC.

mat'l. code				tolerances unless otherwise specified				CUSTOMER COPY		Electronics www.fciconnect.com	
litr	ecr no	dr	date	linear				projection			
B											
				angles				INCH	title 963C2-60 CIRCUIT PACK CONNECTOR		
				dr	E. KROPIEWNICKI	3/14/97					
				enr	S. HEADER	3/14/97	product family FASTECH	code 213			
				chr	S. HEADER	3/14/97					
				appd	S. HEADER	3/14/97	size A	sheet 3 of -			
sheet index	revision sheet										