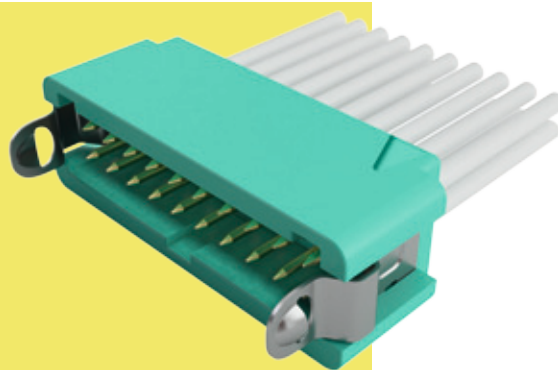
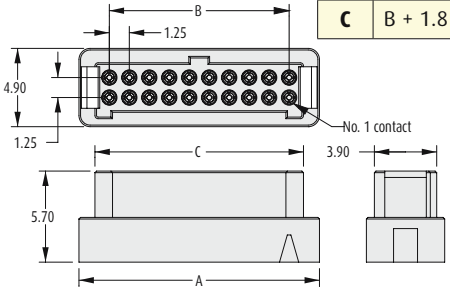
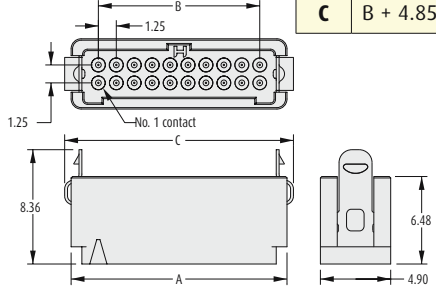

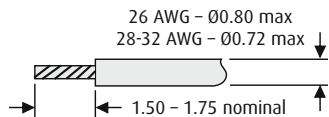


Gecko Connectors

Cable Connectors

- ❖ 4-finger Beryllium Copper contact on a female connector.
- ❖ Features potting wall for extra security.
- ❖ No. 1 position identified on moulding.
- ❖ Crimp barrel meets all crimp guidelines and standards.
- ❖ 2A current capacity, resists high vibration and shock.
- ❖ Withstands extremes of temperature: -65°C to +150°C.



FEMALE		CALCULATION		MALE		CALCULATION	
		A	$B + 3.8$			A	$B + 3.8$
		B	$0.625 \times (\text{Total no. of contacts} - 2)$			B	$0.625 \times (\text{Total no. of contacts} - 2)$
		C	$B + 1.8$			C	$B + 4.85$
CONTACTS		WIRE STRIPPING DETAILS					
							
TOOLS							
Recommended Crimp Tool – Z125-900 Positioner – Z125-901				Contact Insertion/Removal Tool – Z125-902 See page 12 ❖ Instruction sheets available at www.harwin.com/downloads/instructions			
HOW TO ORDER							
SERIES CODE		G125 - XXX XX XX XX		LATCHES			
TYPE				BLANK		Contacts	
				L0		No Latches (Housing)	
				L4		Latches (Male Housing)	
				FINISH			
				05		Gold	PG
		96		Housing	PG		
				TOTAL NO. OF CONTACTS			
				00		Contacts	
				06, 10, 12, 16, 20, 26, 34, 50		Housing	

All dimensions in mm.

Patent Pending – UK 1205109.0