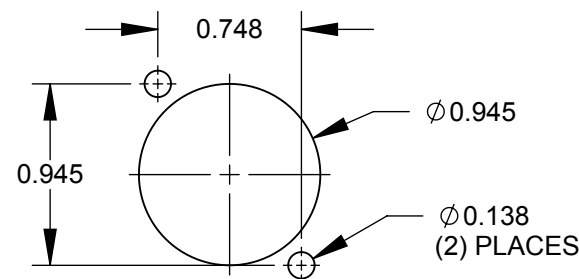
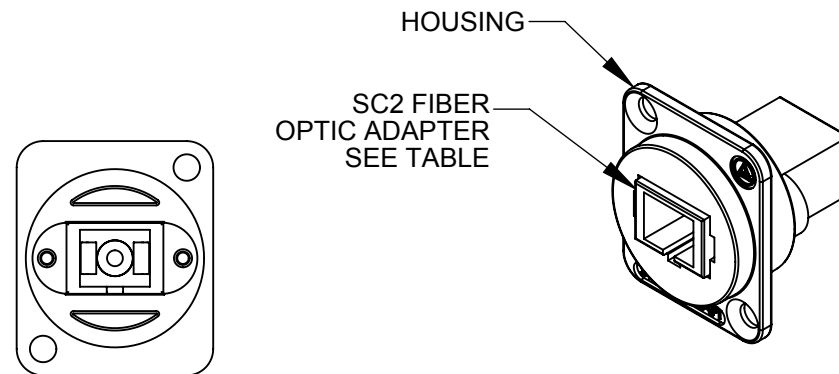


#### NOTES:

1. INSERTION LOSS: 0.75 dB MAX.
2. OPERATION TEMP: -20°C TO +70°C.
3. PRODUCT COMES WITH DUST CAPS. (NOT SHOWN)
4. MATERIALS:  
SLEEVE:  
SINGLE-MODE - CERAMIC (ZIRCONIA)  
MULTI-MODE - PHOSPHORUS BRONZE  
HOUSING - DELRIN, BLACK  
ADAPTER - THERMOPLASTIC  
ADAPTER MOUNTING CLIPS - STAINLESS STEEL
5. FOR MOUNTING SCREWS TO BE SHIPPED WITH ASSEMBLY AND INDIVIDUAL PACKAGING, ADD SUFFIX -PKG TO PART NUMBER.
6. WHEN MOUNTING ASSEMBLY, USE A SCREW TORQUE OF 10 INCH-POUNDS MAXIMUM.
7. THIS PRODUCT IS RoHS COMPLIANT.



RECOMMENDED  
PANEL CUT-OUT

PART NUMBER	SC2 ADAPTER	ADAPTER COLOR
EHSC2	SINGLE-MODE	BLUE
EHSC2M	MULTI-MODE	BEIGE

#### CUSTOMER DRAWING

					<div>UNLESS OTHERWISE SPECIFIED</div> <div>1. ALL DIMENSIONS IN INCHES</div> <div>- TWO PLACE DECIMALS     ±0.02</div> <div>- THREE PLACE DECIMALS   ±0.005</div>	THIS DRAWING DESCRIBES A DESIGN CONSIDERED PROPRIETARY IN NATURE, DEVELOPED AND MANUFACTURED BY SWITCHCRAFT INC. AND IS RELEASED ON A CONFIDENTIAL BASIS FOR IDENTIFICATION PURPOSES ONLY.											
						SIZE	WIDTH		MULT		LBS/M		TEMPER				
						FINISH						MATERIAL					
						SPEC No.						SPEC No.					
						FIRST USED ON				SCALE		<div>Switchcraft®</div>					
										1:1							
A	26348	2/27/29	RS	TJK		DATE DRAWN	BY	CHKD		APVD		<div>SHEET    1                      OF    1</div>					
						5/12/08	JGK	RS		TJK							
									5/21/09		7/16/09						
REV	ECO NUMBER	DATE	BY	APVD	<div>DO NOT SCALE DRAWING</div>	NAME            E SERIES SC/SC						PART No.		REV			
REVISIONS						FIBER OPTIC ADAPTER, RoHS						EHSC2 SERIES            A					