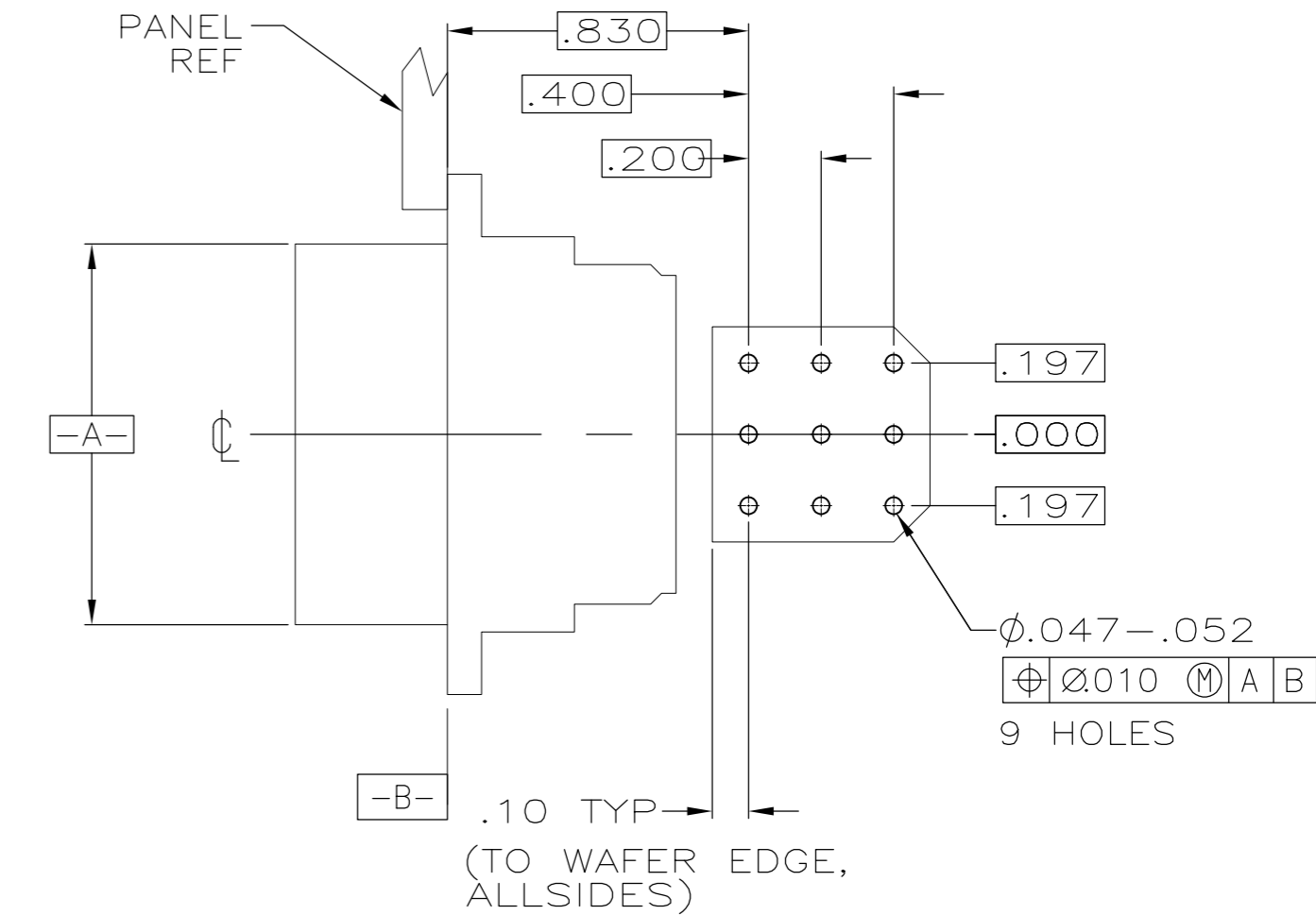
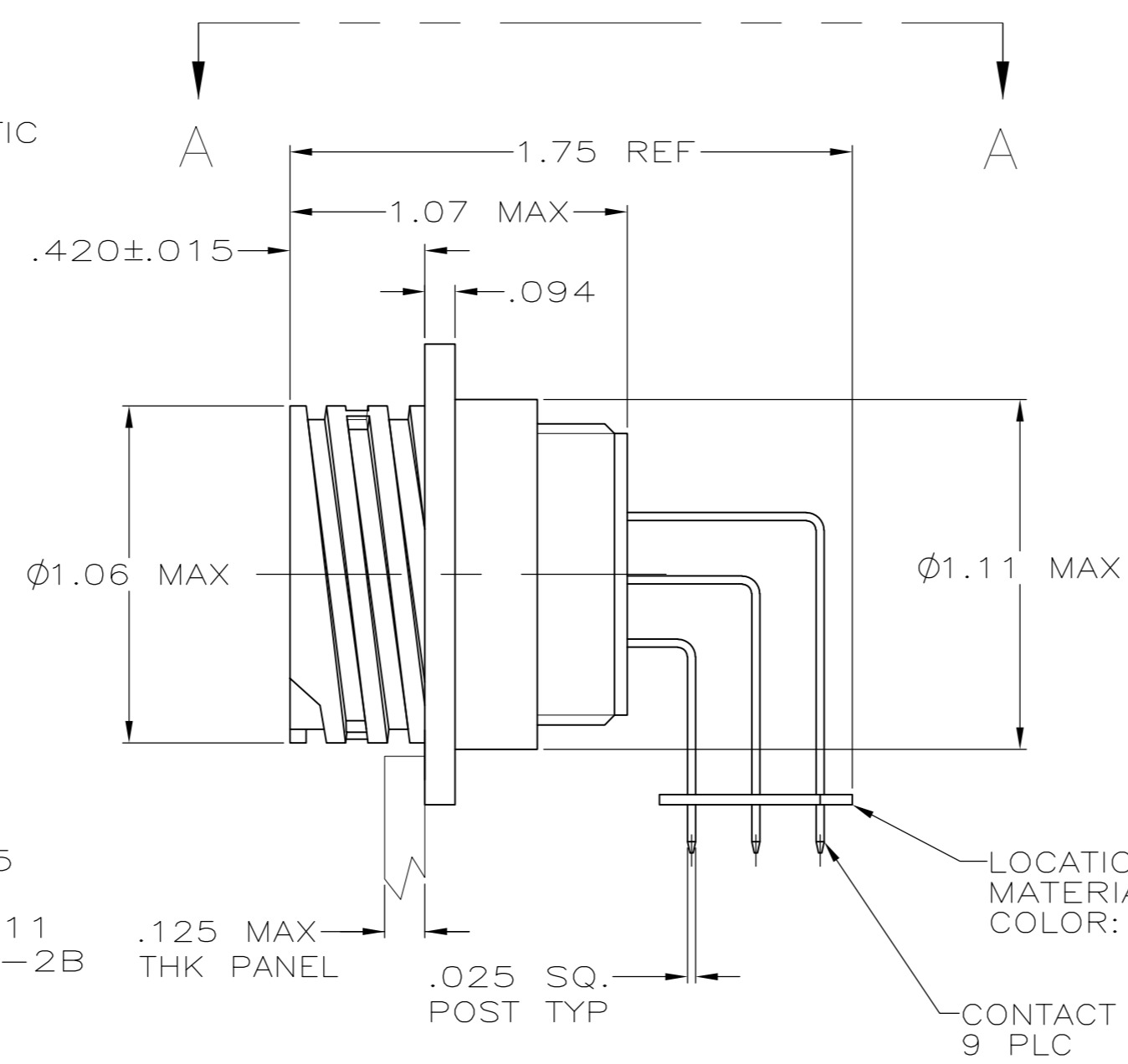
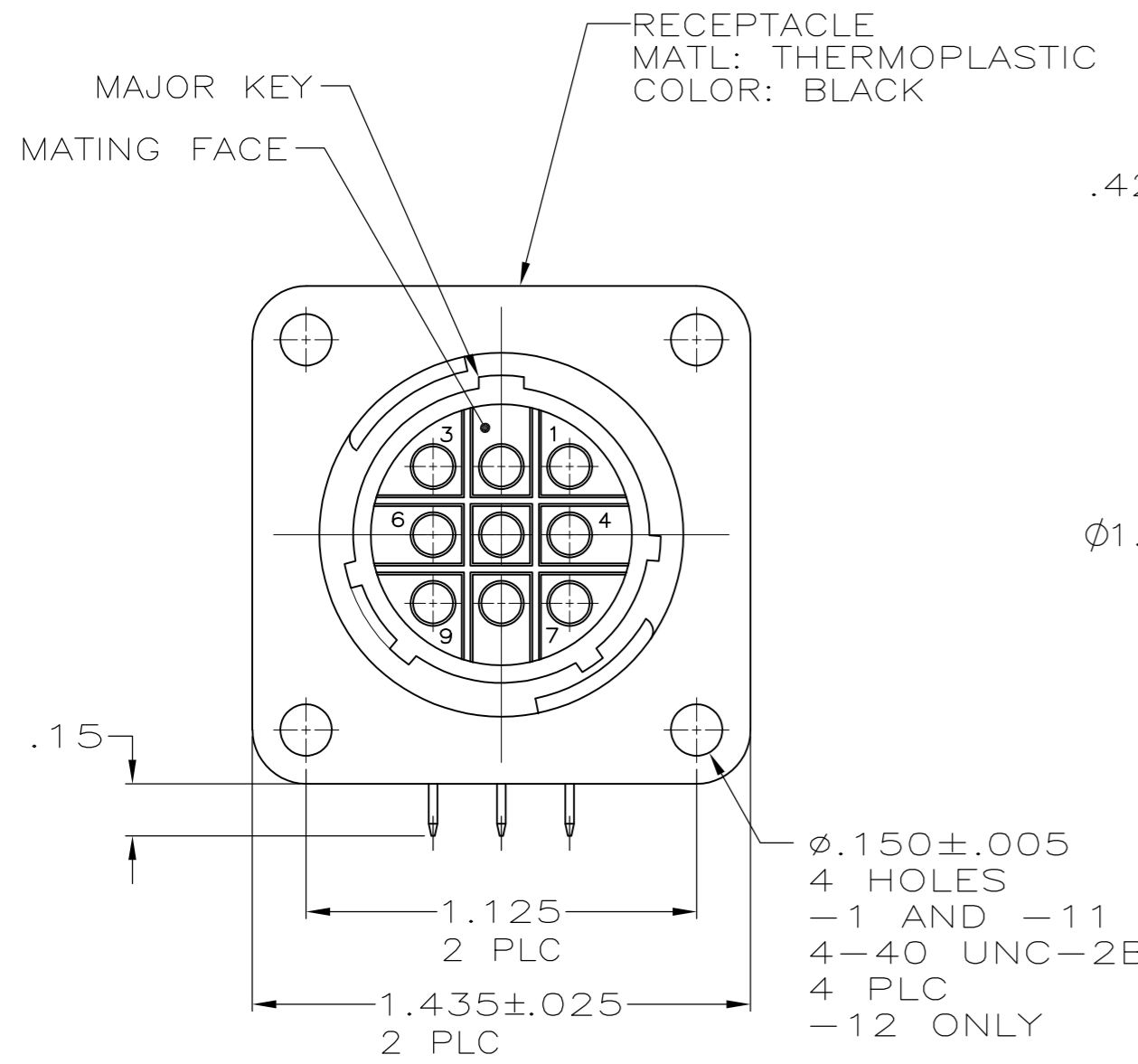
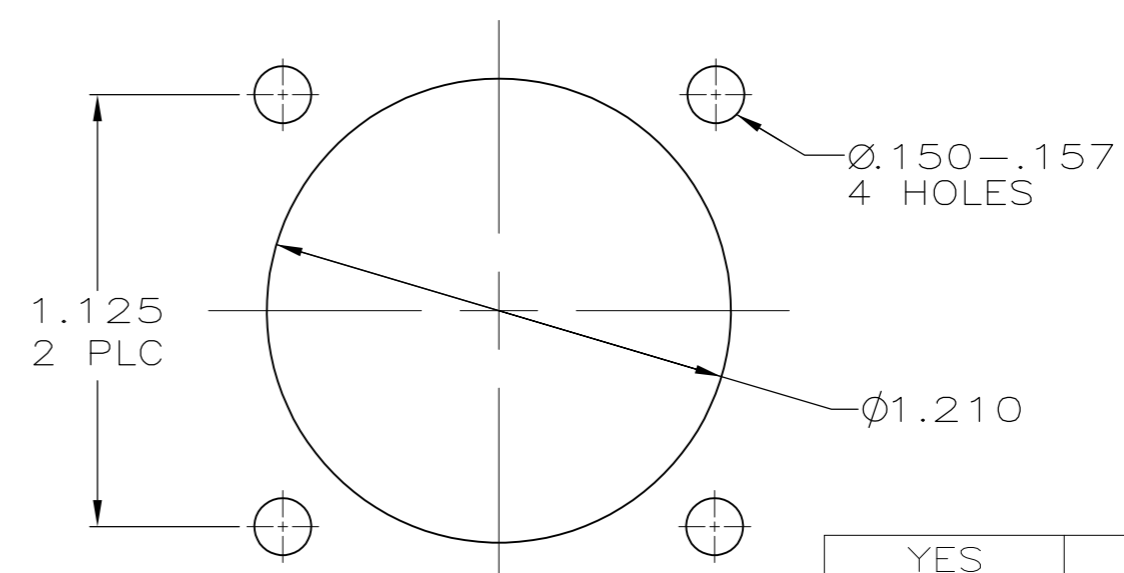


LOC	DIST	REVISIONS				
		P	LTR	DESCRIPTION	DATE	DWN APVD
FT	0		C	REVISED PER ECO-07-005852	3/14/07	SS SH
			C1	REVISED PER ECO-09-023313	09OCT09	KK AEG




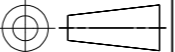
VIEW A-A  
RECOMMENDED PC BOARD LAYOUT

- CONTACT CAVITIES IDENTIFIED BY CHARACTERS ON FRONT AND REAR FACES OF CONNECTOR.
- #6 FASTENER RECOMMENDED FOR MOUNTING.
- CONTACT BODY: .000030 MIN GOLD FOR A LENGTH OF .200 MIN FROM MATING END, WITH REMAINDER TO BE GOLD FLASH, BOTH OVER .000050 MIN NICKEL.  
CONTACT POST: .000100 MIN TIN-LEAD OVER .000100 MIN COPPER.
- PC BOARD HOLE PATTERN IS DEFINED RELATIVE TO CONNECTOR C.L. AND PANEL MOUNTING FACE INDICATED.
- CONTACT BODY: .000030 MIN GOLD FOR A LENGTH OF .200 MIN FROM MATING END, WITH REMAINDER TO BE GOLD FLASH, BOTH OVER .000050 MIN NICKEL.  
CONTACT POST: .000100 MIN TIN OVER .000100 MIN COPPER.
- OBSOLETE PARTS: OBSOLETE CIS STREAMLINING PER D.RENAUD/D.SINISI



RECOMMENDED  
PANEL CUTOUT

YES	YES	5	1-796501-2
NO	NO	5	1-796501-1/6
NO	NO	3	796501-1/6
4-40 THREADED INSERTS	PERIPHERAL SEAL	CONTACT FINISH	PART NUMBER

THIS DRAWING IS A CONTROLLED DOCUMENT.		DWN HAMNER 4-13-00	 Tyco Electronics Corporation Harrisburg, Pa 17105-3608			
		CHK M.CHACKO 4-18-00				
DIMENSIONS: INCHES	TOLERANCES UNLESS OTHERWISE SPECIFIED:	APVD M.CHACKO 4-18-00	NAME  RECEPTACLE ASSY, POSTED, RT ANGLE, RVS SEX, SIZE 17-9, SERIES 1, CPC —			
	0 PLC ± —	PRODUCT SPEC —				
	1 PLC ± —	APPLICATION SPEC —				
	2 PLC ± .03	WEIGHT —	SIZE	CAGE CODE	DRAWING NO	RESTRICTED TO —
	3 PLC ± .010		A2	00779	C=796501	
	4 PLC ± —					
MATERIAL —	FINISH —	CUSTOMER DRAWING		SCALE 2:1	SHEET 1 OF 1	REV C1