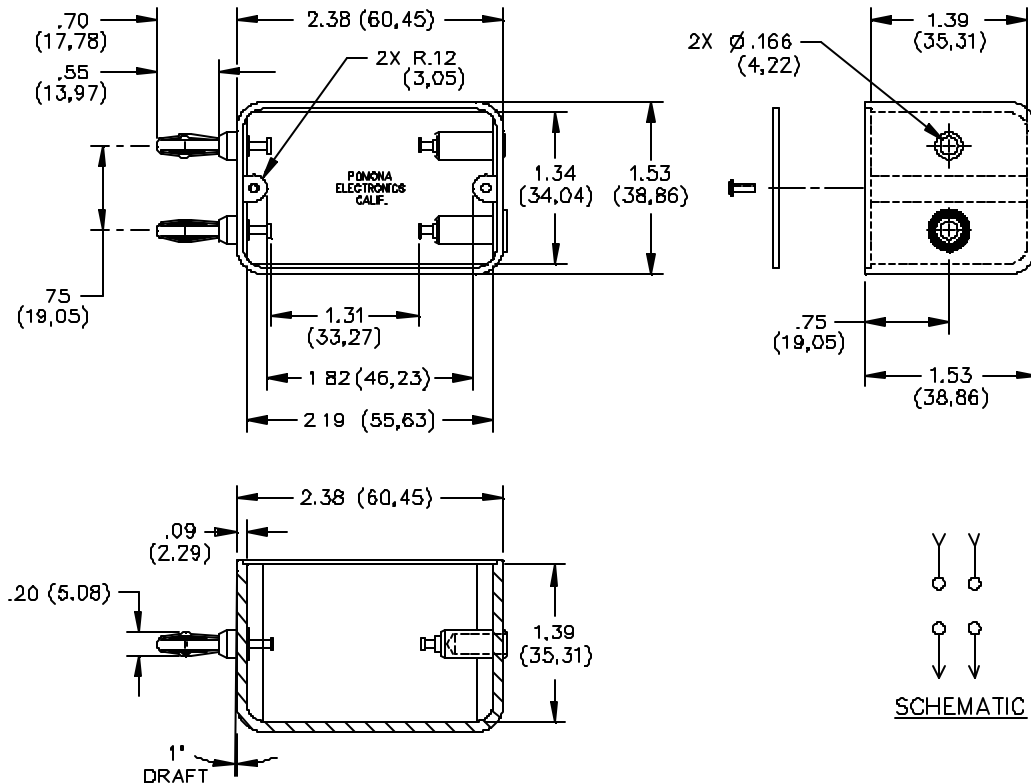


Model 2224 Phenolic Box Component Mounting Banana Jack To Double Plug

Operating Temperature: +150°C. (+302°F.) Max.



MATERIALS:

Banana Plug Springs: Beryllium Copper

Finish: Nickel plated

Polarity Marker: Color: Red

Banana Plug Bodies, Solder Turret Terminals and

Banana Jacks: Brass, Alloy 360 ½ Hard.

Finish: Bright tin plated

Molded Housing: Electrical grade phenolic. Color:

Black

Marking: "MODEL 2224 POMONA

ELECTRONICS CALIF."

Screws: 2 Ea.. #2-56 x (3/16") P. Head – Steel

Cover: Phenolic Plate. Color: Black

ORDERING INFORMATION: Model 2224

RATINGS:

All dimensions are in inches. Tolerances (except noted): .xx = ±.02" (.51 mm), .xxx = ± .005" (.127 mm).

All specifications are to the latest revisions. Specifications are subject to change without notice.

Registered trademarks are the property of their respective companies. Made in USA

Mouser Electronics

Authorized Distributor

Click to View Pricing, Inventory, Delivery & Lifecycle Information:

[Pomona:](#)

[2224](#)