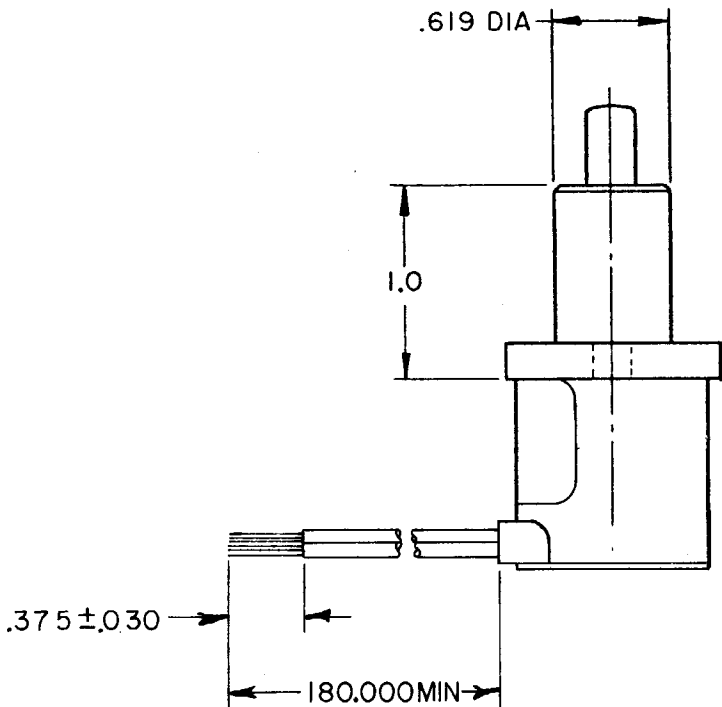
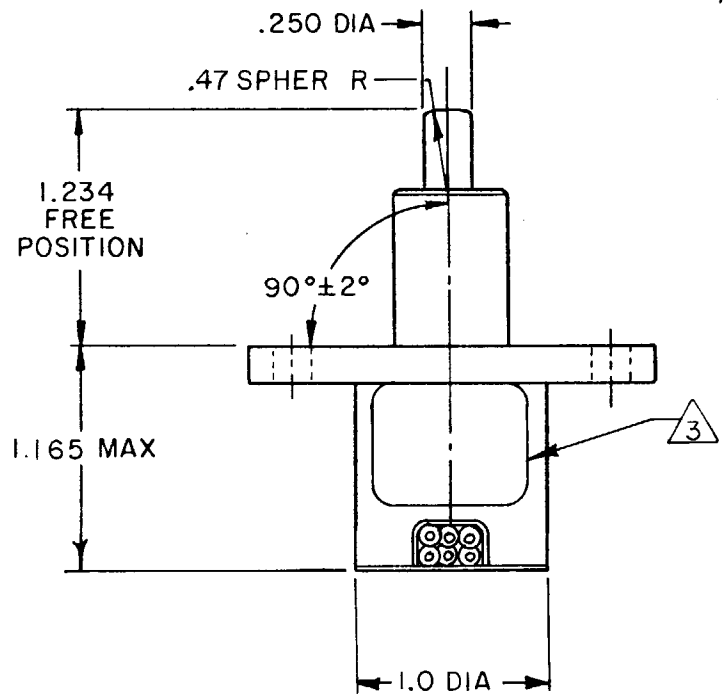
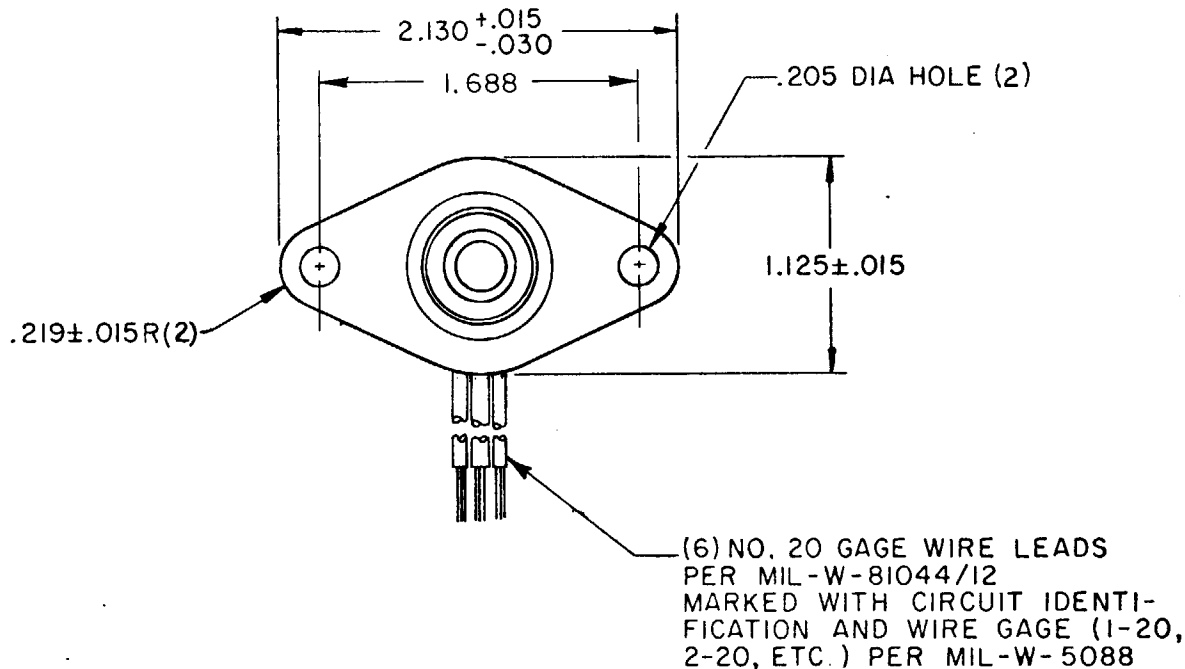
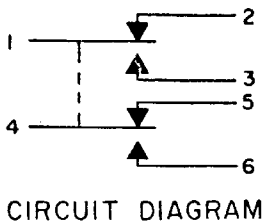


# SWITCH - ENCLOSED

CATALOG LISTING  
**1EN297-15**



THIS DRAWING COVERS A PROPRIETARY ITEM AND IS THE PROPERTY OF MICRO SWITCH, A DIVISION OF MINNEAPOLIS-HONEYWELL REGULATOR CO. THIS DRAWING IS NOT TO BE COPIED OR USED WITHOUT THE APPROVAL OF MICRO SWITCH.

CHARACTERISTICS		ELECTRICAL DATA		SCALE FULL	
OPERATING FORCE ----- 6-12 LB		CONTACT ARRANGEMENT		DO NOT SCALE PRINT	
FULL OVERTRAVEL FORCE -----30 LB MAX		S P D T (2)		UNLESS OTHERWISE NOTED	
RELEASE FORCE ----- 4 LB MIN		LOAD	28 VDC		DIMENSIONS ARE IN INCHES <b>TOLERANCES ARE:</b> ONE PLACE (.0) ±.030 TWO PLACE (.00) ±.015 THREE PLACE (.000) ±.005 ANGLES ±
PRETRAVEL ----- .040 MAX			SEA LEVEL	50,000 FT.	
DIFFERENTIAL TRAVEL ----- .020 MAX			RES	4 4	
OVERTRAVEL ----- .250 MIN			IND	2 2	
			MOTOR	4	
				WEIGHT 14.0 OZ MAX	

## NOTES

- 1 - CORROSION RESISTANT STEEL ENCLOSURE
- 2 - SWITCH SEALED PER MIL-S-8805 SYMBOL 4
- 3 - CIRCUIT DIAGRAM, CATALOG LISTING, AND DATE CODE ARE SHOWN ON NAMEPLATE
- 4 - COINCIDENCE OF OPERATING AND RELEASING POINTS: .010 OF PLUNGER TRAVEL

FO-50378-003  
DRAWN  
CSM 11 APR 79  
CHECK  
CEB 16 APR 79  
CHECK  
X12  
DRAWING NUMBER  
M 1EN297-15  
RELEASE NO. PR-1845  
REPLACES

# Mouser Electronics

Authorized Distributor

Click to View Pricing, Inventory, Delivery & Lifecycle Information:

[Honeywell:](#)

[1EN297-15](#)