

| DESCRIPTION   | APPROVED BY | DATE     | REV |
|---------------|-------------|----------|-----|
|               | C. Westerbe | 10-15-92 | 4   |
| ECO-09-026495 | AEG         | 11DEC09  | 5   |

SAFETY ORGANIZATION(S):  
THIS FILTER HAS BEEN FORMALLY RECOGNIZED, CERTIFIED OR APPROVED BY THE LISTED AGENCY. THEREFORE, ALL TEST/REQUIREMENTS SPECIFIED IN THE LATEST REVISION OF THE FOLLOWING AGENCY STANDARDS HAVE BEEN MET:

UL RECOGNIZED  
CSA CERTIFIED  
VDE APPROVED  
OPERATING SPECIFICATIONS:  
LINE VOLTAGE/CURRENT:  
LINE FREQUENCY:  
MAX. LEAKAGE CURRENT, EACH  
LINE TO GROUND  
OPERATING AMBIENT TEMP. RANGE:

UL 1283  
CSA 22.2, NO.0,0.4,8  
VDE 565-3  
6 AMP., 120/250 VAC  
5 AMP/40°C, 250VAC  
50-60Hz  
1.25mA @ 120V 60Hz  
2.10mA @ 250V 50Hz  
-10°C TO +40°C @ RATED CURRENT, I<sub>r</sub>

IN AN AMBIENT, T<sub>a</sub>, HIGHER THAN 40°C, THE MAXIMUM OPERATING CURRENT, I<sub>o</sub>, IS AS FOLLOWS:

$$I_o = I_r \sqrt{\frac{85-T_a}{45}}$$

RELIABILITY SPECIFICATIONS:  
STORAGE TEMPERATURE:  
HUMIDITY:  
CURRENT OVERLOAD TEST:

-25°C TO +85°C  
21 DAYS @ 40°C 95% RH  
6 TIMES RATED CURRENT FOR 8 SECONDS

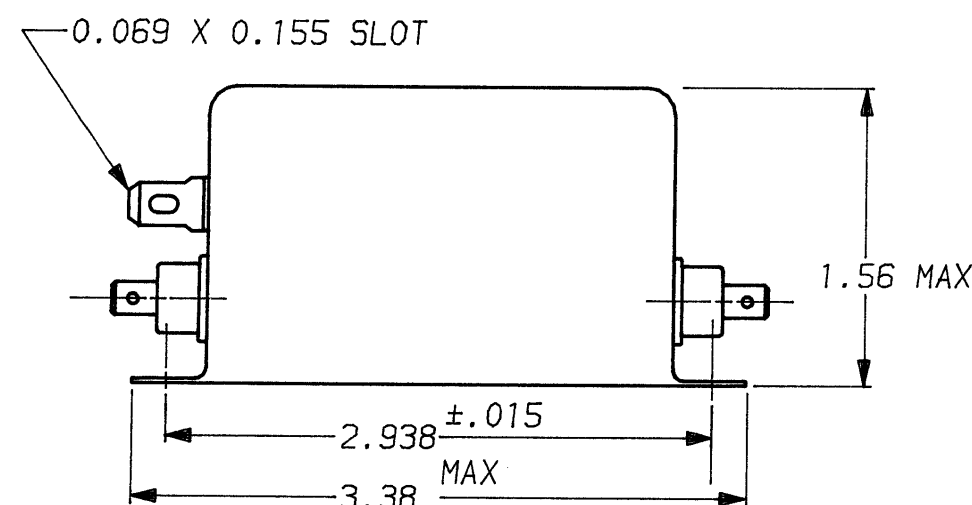
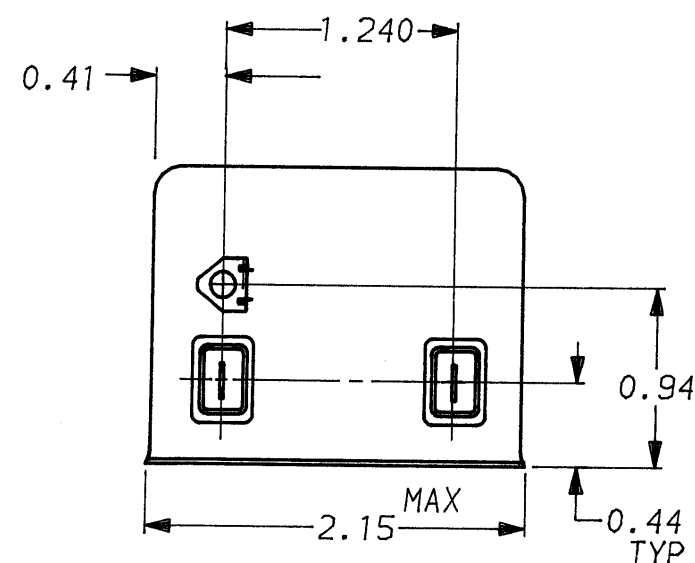
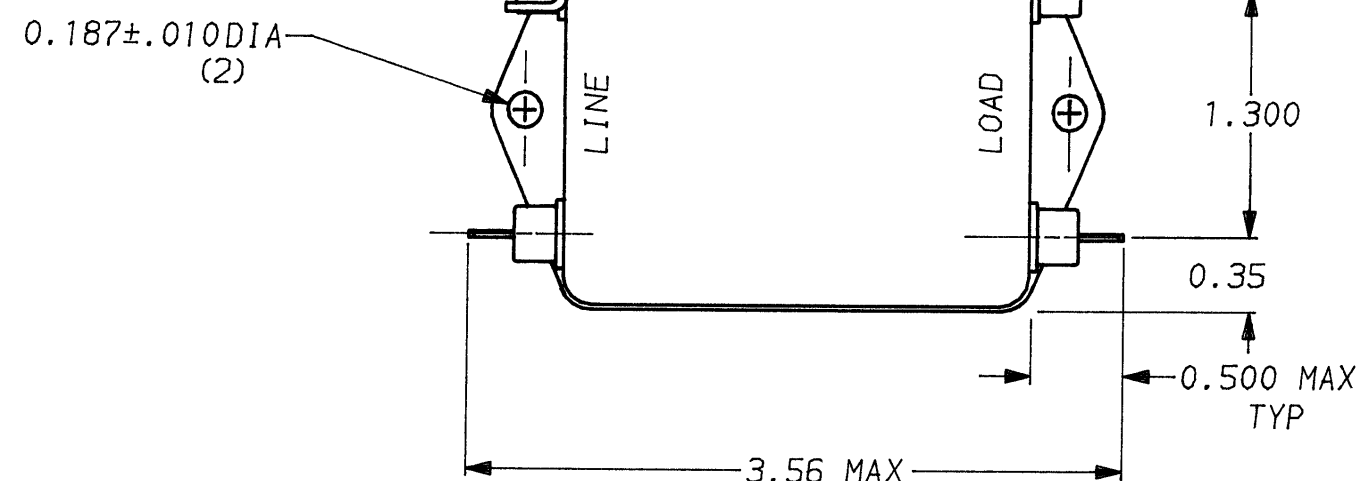
TEST SPECIFICATIONS:  
INDUCTANCE:  
CAPACITANCE: (MEASURED @ 1 KHz, 0.25 VAC MAX., 25°C ±1°C)  
LINE TO GROUND:  
LINE TO LINE:  
DISCHARGE RESISTOR:  
LINE/GROUND AND LINE/LINE  
INSULATION RESISTANCE  
(W/O DISCHARGE RESISTOR)

3.45mH NOMINAL  
0.015µF ±20%  
.57µF ±20%  
560KΩ  
6000 MΩ (MIN) AT 100 VDC  
20°C AND 50% RH

RECOMMENDED RECEIVING INSPECTION HIPOT:  
LINES TO GROUND:  
LINE TO LINE:

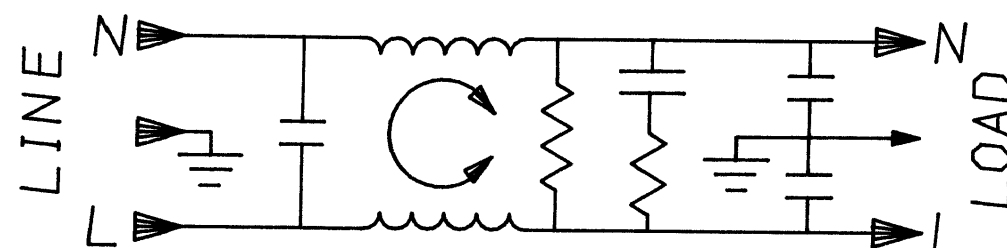
2250 VDC FOR 1 MINUTE  
1450 VDC FOR 1 MINUTE

FILTER APPROVAL:  
THE BEST WAY TO SELECT AND QUALIFY A FILTER IS FOR YOUR ENGINEERING TO TEST THE UNIT IN YOUR EQUIPMENT.



**1 OBSOLETE PARTS: OBSOLETE CIS STREAMLINING PER D.RENAUD/D.SINISI**


|           |          |   |
|-----------|----------|---|
| 4609051-1 | OBSOLETE | 1 |
| 6609051-1 |          |   |



| 50Ω - 50Ω (MINIMUM) INSERTION LOSS |     |     |     |    |     |    |    |    |    |    |    |  |
|------------------------------------|-----|-----|-----|----|-----|----|----|----|----|----|----|--|
| FREQUENCY MHz                      | .01 | .05 | .07 | .1 | .15 | .5 | 1  | 5  | 10 | 20 | 30 |  |
| COMMON dB                          | 4   | 18  | 21  | 25 | 30  | 56 | 55 | 53 | 53 | 45 | 45 |  |
| DIFF. dB                           | 4   | 7   | 7   | 26 | 39  | 67 | 75 | 68 | 60 | 55 | 55 |  |

This document is proprietary to CORCOM INC. and is not to be reproduced nor used for manufacturing purposes except on CORCOM's order or prior written consent.

TOLERANCE EXCEPT AS NOTED  
DECIMAL: .XXX .XX .X ANGLES ± 1°  
ENGLISH: ±.025  
METRIC: ± —  
MATERIAL: AS SUPPLIED  
FINISH:

|   |            |                        |      |
|---|------------|------------------------|------|
|  |            | <h1>corcom</h1>        |      |
|   |            | LIBERTYVILLE, IL 60048 |      |
| POWER LINE FILTER   |            |                        |      |
| SCALE   | DATE       | DRG. NO.               | REV. |
| NTS   | 5-12-88    | 6VG1.                  | 5    |
| DRW. BY   | ORIGINATOR |                        |      |
| TDL   | CW         |                        |      |