

MB13-SERIES

Three Phase Input Noise Filter with Block Terminal

LAMBDA
DENSEI-LAMBDA



Features

- (1) Block Terminal with Cover
Simple wire connection by block terminal.
High safety by terminal cover.
- (2) Three Phase Power Line Filter
Available for Star connection : 400Vac line-line
Available for Delta connection : 200Vac line-line
- (3) High Attenuation in Compact Package

Safety standard

- UL1283,
- CSA Std. C22. 2 No. 8
- EN133200 (New European Standard)

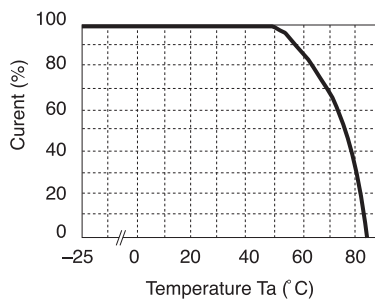
Specifications

| ITEMS | MODEL | MB1310 | MB1320 | MB1330 | MB1340 | MB1350 |
|-------------------------------|-----------|--|------------|------------|------------|-----------|
| 1 Rated Voltage (AC) | | 500V(50/60Hz) | | | | |
| 2 Rated Current (AC) (Note 1) | | 10A | 20A | 30A | 40A | 50A |
| 3 Test Voltage | | 2500VAC(20mA) Terminal to case, 1min. at 25°C, 70%RH | | | | |
| 4 Isolation Resistance | | 100MΩ min. Terminal to case, 500VDC at 25°C, 70%RH | | | | |
| 5 Leakage Current | 250V 60Hz | 1.0mA max. | | | | |
| | 500V 60Hz | 2.0mA max. | | | | |
| 6 DC Resistance | | 80m Ω max. | 30m Ω max. | 20m Ω max. | 11m Ω max. | 7m Ω max. |
| 7 Temperature Rise | | 35°C max. | | | | |
| 8 Operating Temperature | | -25°C~+85°C | | | | |
| 9 Operating Humidity | | 30%~95% RH (No Dewdrop) | | | | |
| 10 Storage Temperature | | -40°C~+85°C | | | | |
| 11 Storage Humidity | | 10%~95% RH (No Dewdrop) | | | | |
| 12 Vibration | | 10~55~10Hz, Amplitude (Sweep for 1min) 1.5mm(9G max.) X,Y,Z 2 hours each | | | | |
| 13 Safety Standard | | Built to meet : UL1283, CSA C22.2 No.8, EN133200 | | | | |
| 14 Weight (typ) | | 1800g | 1800g | 1800g | 2800g | 2800g |
| 15 MTBF(hours) (Note 2) | | 573,000 | 480,000 | 521,000 | 421,000 | 395,000 |

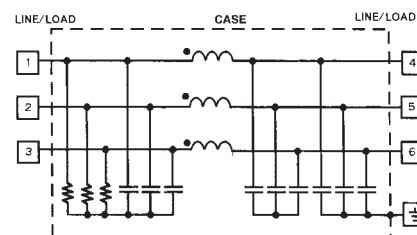
(Note1): Value for $T_a \leq 50^\circ\text{C}$. For $T_a > 50^\circ\text{C}$ derate according to the derating curve shown below.

(Note2): Calculated based on the part stress analysis prediction method as specified in MIL-HDBK-217F.

DERATING

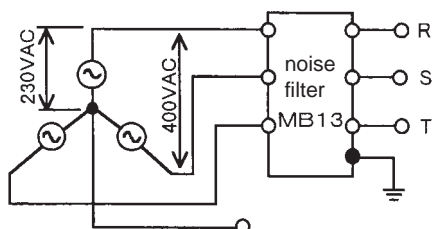


CIRCUIT

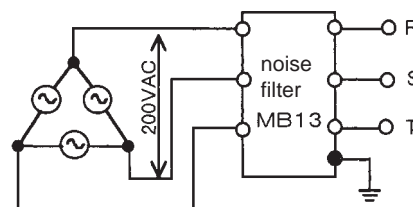


APPLICATIONS

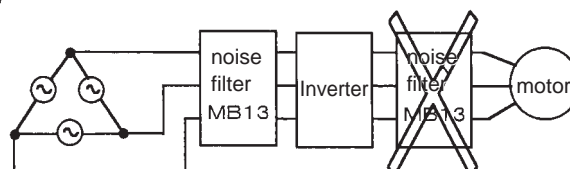
Star connection
3 Phase 4 Wires 400V line-line. Unused Neutral line



Delta Connection
3 Phase 3 Wires 200V line-line

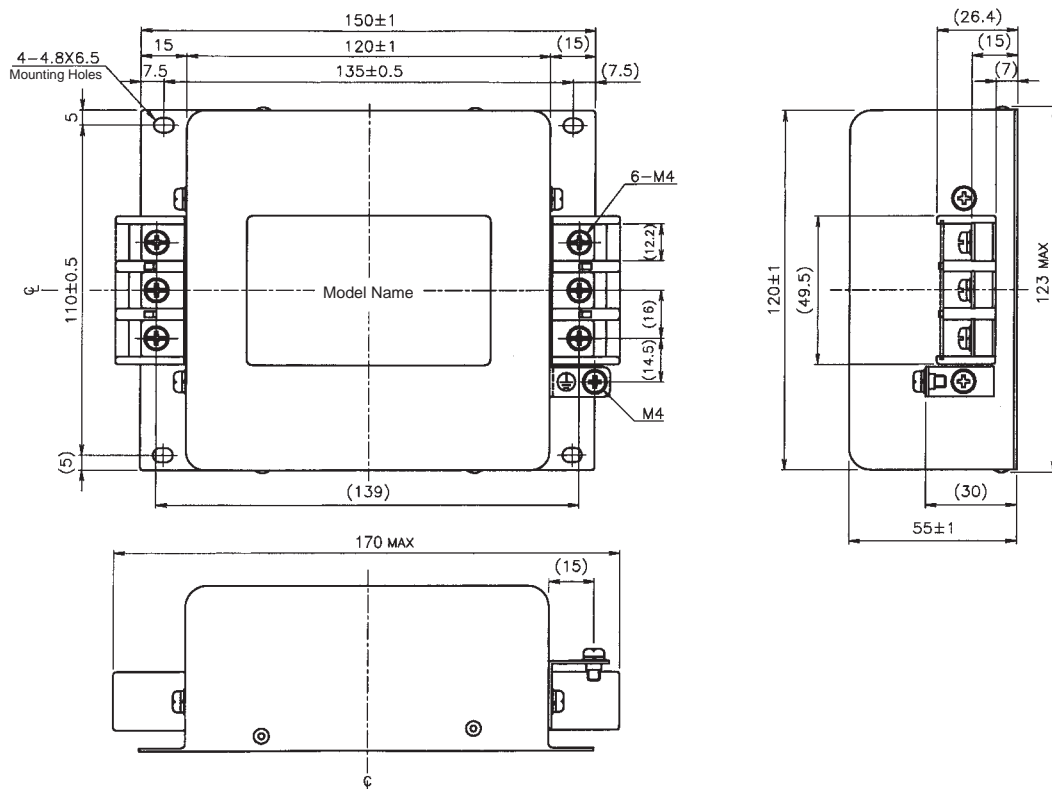


Note: For inverter application
Do not use MB series between
inverter and motor.

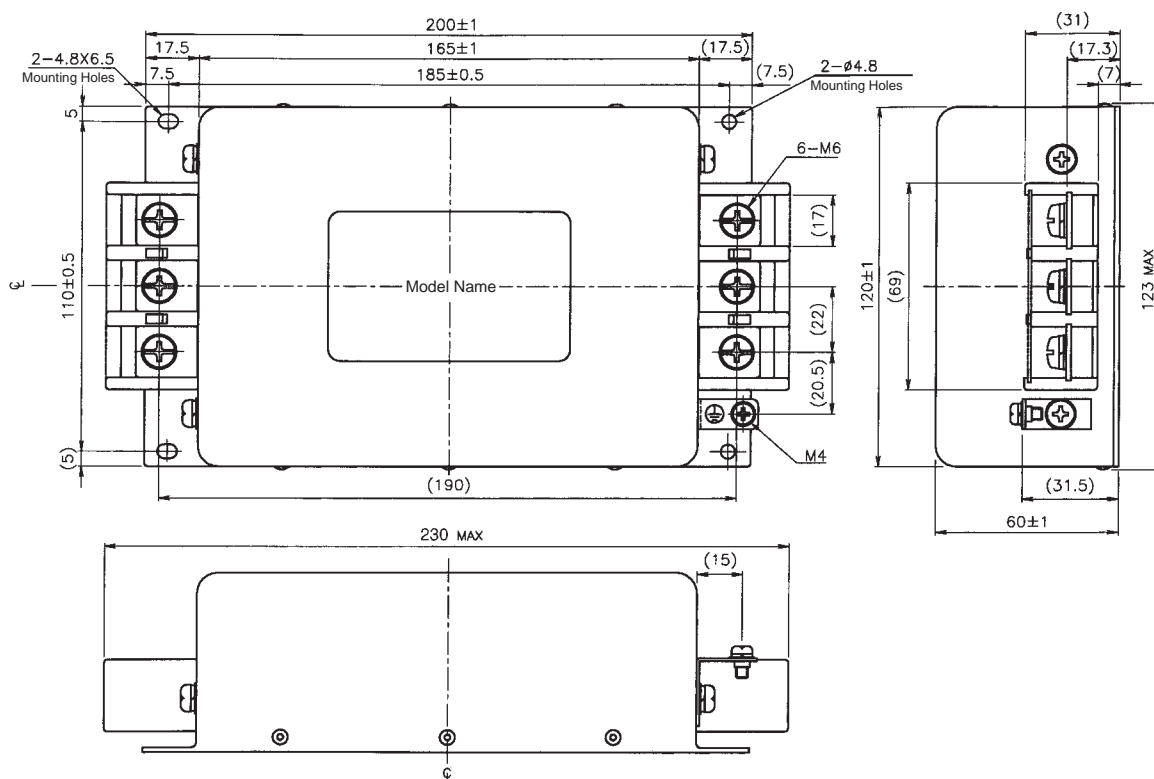


MB13-SERIES

- MB1310
- MB1320
- MB1330



- MB1340
- MB1350



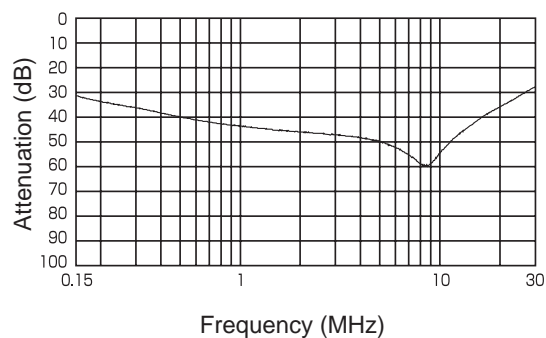
(Unit: mm)

CHARACTERISTICS

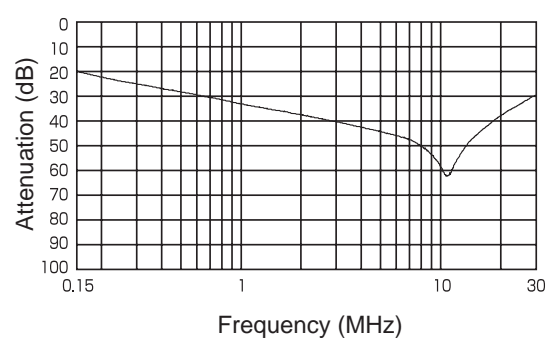
■ Typical Insertion Loss

(1) Asymmetrical

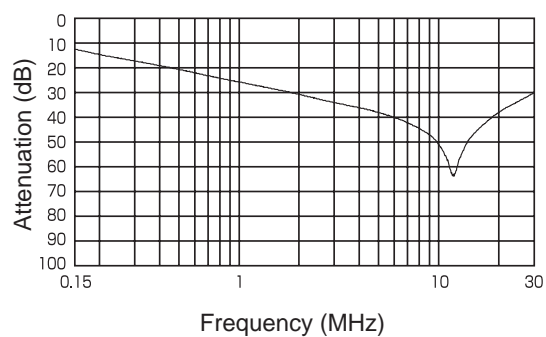
MB1310



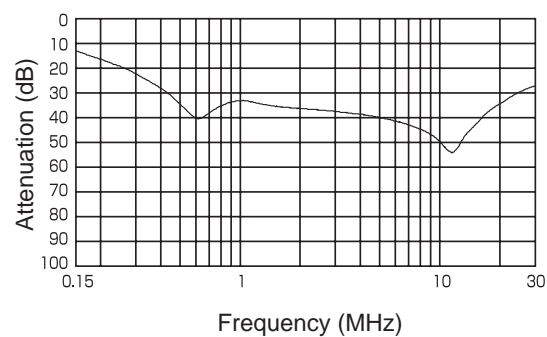
MB1320



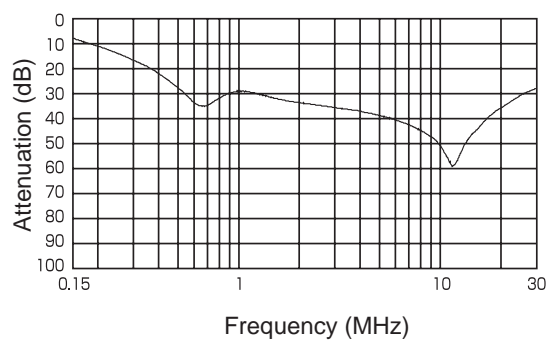
MB1330



MB1340



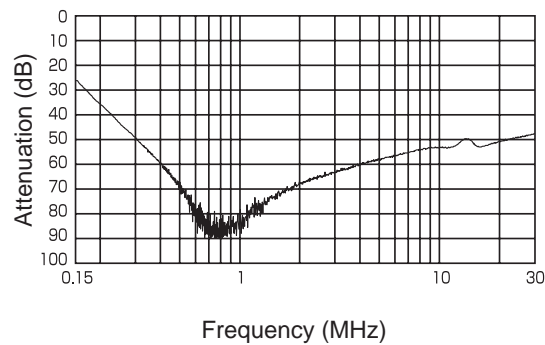
MB1350



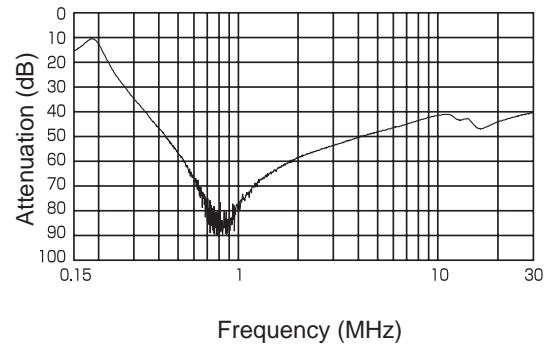
CHARACTERISTICS

■ Typical Insertion Loss
(2) Symmetrical

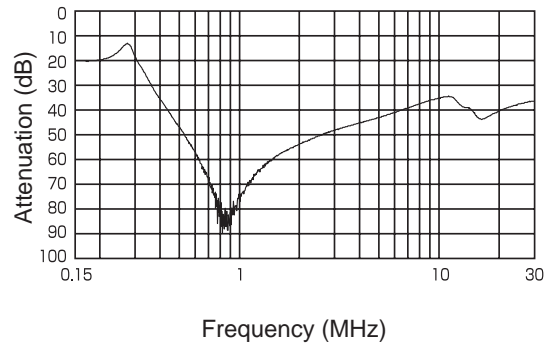
MB1310



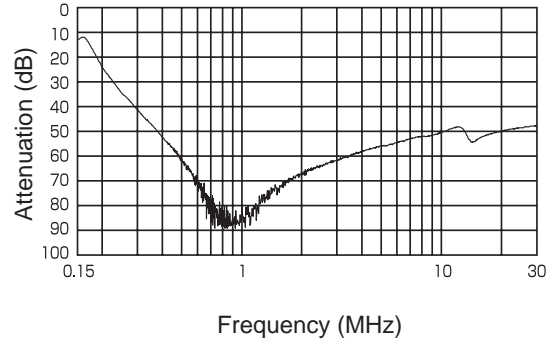
MB1320



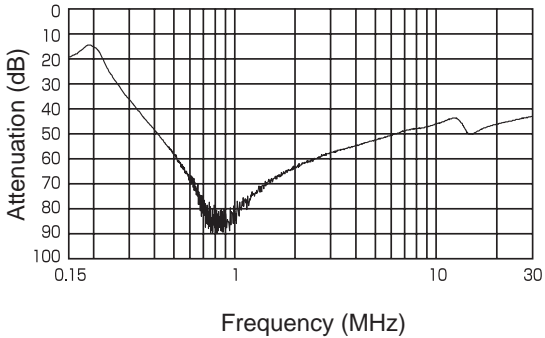
MB1330



MB1340



MB1350



Noise Filter