

## AS8510

### Data Acquisition Device for Battery Sensors



## 1 General Description

The AS8510 is a virtually offset free, low noise, two channel measurement device. It is tailored to accurately measure battery current from mA range up to kA range in conjunction with a 100  $\mu\Omega$  shunt resistor in series with the battery rail. Through the second measurement channel it enables capture of, either battery voltage synchronous with the current measurement, or, measure the analog output of an internal or external temperature sensor. Both channels are matched and can either measure small signals up to  $\pm 160$  mV versus ground, through programmable gain amplifier or larger signals in the 0 to 1V range without the amplifier.

After analog to digital conversion and digital filtering, the resulting 16-bit digital words are accessible through 4-wire standard serial interface. The device includes a number of additional features explained in the next section.

## 2 Key Features

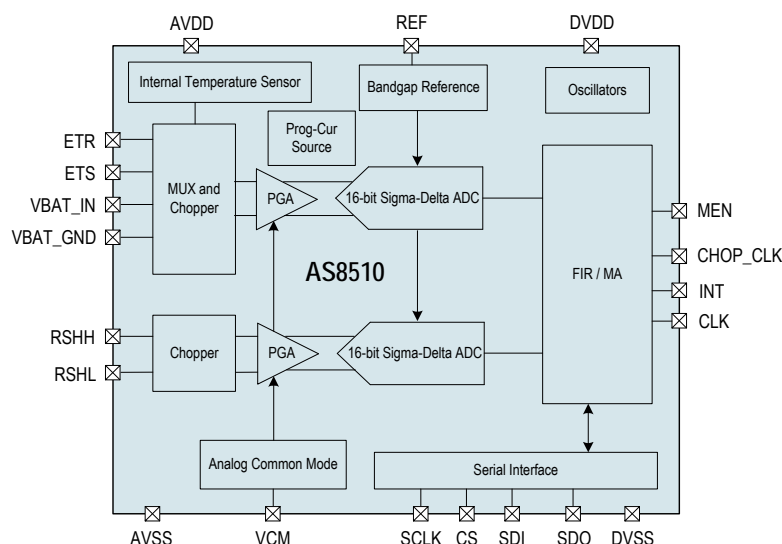
- 3.3V supply voltage
- Two High resolution 16 bit  $\Sigma-\Delta$  A/D converters
- Programmable sampling to enable data throughputs from less than 1Hz to 8kHz
- Zero Offset for both channels
- Independent control of data rate on both channels
- Precision, low noise, programmable gain amplifiers for both channels with gains 5, 25, 40, 100 to support wide dynamic ranges.

- Option for multiplexing either one differential input, or two single ended inputs or the internal temperature sensor on one channel
- Programmable current source for external temperature sensor connectable to any of the inputs
- High precision and high stability 1.2V reference voltage source
- Digital signal processing with filter options for both channels
- Four operating modes providing
  - Continuous data acquisition (or)
  - Periodic single-shot acquisition, (or)
  - Continuous acquisition on threshold crossing of programmed current levels (or)
  - A combination of the above
- On chip high-precision 4MHz RC oscillator or option for external clock
- -40°C to +125°C ambient operation
- AEC - Q100 automotive qualified
- Internal chip ID for full traceability
- SSOP-20 pin package

## 3 Applications

The AS8510 is ideal for shunt based batteries sensor. For high-side current sensing, the input signal may be conditioned using *austriamicrosystems* device AS8525 before applying to this device.

Figure 1. AS8510 Block Diagram



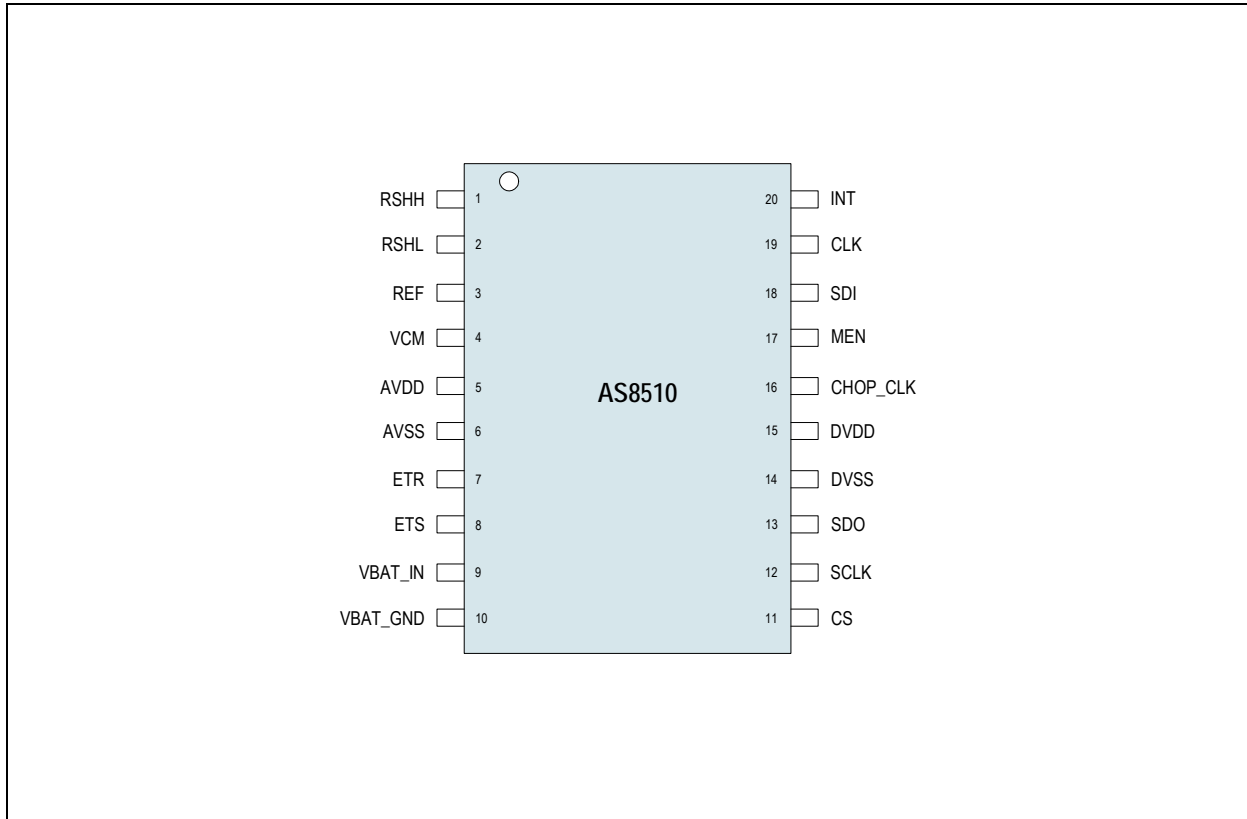
## Contents

|   |    |
|---|----|
| 1 General Description .....   | 1  |
| 2 Key Features.....   | 1  |
| 3 Applications.....   | 1  |
| 4 Pin Assignments .....   | 4  |
| 4.1 Pin Descriptions.....   | 4  |
| 5 Absolute Maximum Ratings .....  | 6  |
| 6 Electrical Characteristics.....   | 7  |
| 6.1 Operating Conditions.....   | 7  |
| 6.2 DC/AC Characteristics for Digital Inputs and Outputs .....                          | 7  |
| 6.3 Detailed System and Block Specifications .....                                      | 8  |
| 6.3.1 Electrical System Specifications .....  | 8  |
| 6.4 Current Measurement Ranges (across 100μΩ shunt resistor).....                       | 9  |
| 6.4.1 Differential Input Amplifier for Current Channel.....                             | 10 |
| 6.4.2 Differential Input Amplifier for Voltage Channel.....                             | 11 |
| 6.4.3 Sigma Delta Analog to Digital Converter .....                                     | 12 |
| 6.4.4 Bandgap Reference Voltage.....  | 12 |
| 6.4.5 Internal (Programmable) Current Source for External Temperature Measurement ..... | 13 |
| 6.4.6 CMREF Circuit (VCM) .....   | 14 |
| 6.4.7 Internal AVDD Power-on Reset .....  | 14 |
| 6.4.8 Internal DVDD Power-on Reset.....   | 14 |
| 6.4.9 Low Speed Oscillator .....  | 14 |
| 6.4.10 High Speed Oscillator .....  | 15 |
| 6.4.11 External Clock.....  | 15 |
| 6.4.12 Internal Temperature Sensor.....   | 15 |
| 6.5 System Specifications .....   | 16 |
| 7 Detailed Description.....   | 17 |
| 7.1 Current Measurement Channel .....   | 17 |
| 7.2 Voltage/Temperature Measurement Channel.....  | 17 |
| 7.3 Digital Implementation of Measurement Path.....                                     | 18 |
| 7.4 Modes of Operation .....  | 18 |
| 7.4.1 Normal Mode 1 (NOM1) .....  | 19 |
| 7.4.2 Normal Mode 2 (NOM2) .....  | 20 |
| 7.4.3 Standby Mode1 (SBM1) .....  | 21 |
| 7.4.4 Standby Mode2 (SBM2) .....  | 21 |
| 7.5 Reference-Voltage.....  | 22 |
| 7.6 Oscillators.....  | 22 |
| 7.7 Power-On Reset .....  | 22 |
| 7.8 4-Wire Serial Port Interface .....  | 22 |
| 7.8.1 SPI Frame.....  | 23 |
| 7.8.2 Write Command.....  | 23 |
| 7.8.3 Read Command.....   | 24 |
| 7.8.4 Timing .....  | 25 |
| 7.8.5 SPI Interface Timing .....  | 26 |

|   |    |
|---|----|
| 7.9 Control Register.....                                   | 27 |
| 7.9.1 Standby Mode - Power Consumption .....                | 38 |
| 7.9.2 Initialization Sequence at Power ON .....             | 38 |
| 7.9.3 Soft-reset Using Bit D[7] of Reset Register 0x09..... | 39 |
| 7.9.4 Reconfiguring Gain Setting of PGA .....               | 40 |
| 7.9.5 Configuring the Device During Normal Mode .....       | 40 |
| 7.10 Low Side Current Measurement Application .....         | 41 |
| 8 Package Drawings and Markings .....                       | 42 |
| 8.1 Recommended PCB Footprint.....                          | 43 |
| 9 Ordering Information .....                                | 45 |

## 4 Pin Assignments

Figure 2. Pin Assignments (Top View)



### 4.1 Pin Descriptions

Table 1. Pin Descriptions

| Pin Number | Pin Name | Pin Type                   | Description  |
|------------|----------|----------------------------|--|
| 1          | RSHH     | Analog input               | Positive Differential input for current channel  |
| 2          | RSHL     |                            | Negative differential input for current channel  |
| 3          | REF      | Analog output              | Internal reference voltage to sigma-delta ADC; connect 100nF to AVSS from this pin.        |
| 4          | VCM      |                            | Common Mode voltage to the internal measurement path; connect 100nF to AVSS from this pin. |
| 5          | AVDD     | Supply pad                 | +3.3V Analog Power-supply  |
| 6          | AVSS     |                            | 0V Power-supply analog   |
| 7          | ETR      | Analog input               | Voltage channel single ended input   |
| 8          | ETS      |                            |  |
| 9          | VBAT_IN  |                            | Battery voltage (high) input   |
| 10         | VBAT_GND |                            | Battery voltage (low) input  |
| 11         | CS       | Digital input with pull-up | Chip select with an internal pull-up resistor (SPI Interface)                              |
| 12         | SCLK     | Digital input              | Clock signal (SPI Interface)   |
| 13         | SDO      | Digital output             | Serial Data Input (SPI Interface)  |

Table 1. Pin Descriptions

| Pin Number | Pin Name | Pin Type       | Description   |
|------------|----------|----------------|---|
| 14         | DVSS     | Supply pad     | 0V Digital Ground   |
| 15         | DVDD     |                | +3.3V Digital Supply  |
| 16         | CHOP_CLK | Digital output | Chop Clock used in High side measurements to synchronize external chopper.<br>(As an example, when AS8525 is used to condition the input signal to the input range of AS8510, the chop clock is used by AS8525.)  |
| 17         | MEN      |                | Digital output issued during the Standby Mode (SBM) to signal the short duration of data sampling. This signal is useful in the case of a High Side Measurement application.<br>(For example: This signal is used by AS8525 device to wake-up and enable the measurement path.) |
| 18         | SDI      | Digital input  | Data signal (SPI Interface)   |
| 19         | CLK      | Digital I/O    | By default this pin is the internal clock output which can be used by a Microcontroller. The internal clock may also be disabled as an output by programming Register 08. To use an external Clock, Register 08 has to be programmed.   |
| 20         | INT      | Digital output | Active High Interrupt to indicate data is ready   |

## 5 Absolute Maximum Ratings

Stresses beyond those listed in [Table 2](#) may cause permanent damage to the device. These are stress ratings only. Functional operation of the device at these or any other conditions beyond those indicated in [Electrical Characteristics on page 7](#) is not implied. Exposure to absolute maximum rating conditions for extended periods may affect device reliability.

Table 2. Absolute Maximum Ratings

| Parameter   | Min  | Max                      | Units | Notes   |
|---|------|--------------------------|-------|---|
| <b>Electrical Parameters</b>                            |      |                          |       |   |
| DC supply voltage (AVDD and DVDD)                       | -0.3 | 5                        | V     |   |
| Input voltage (VIN)                                     | -0.3 | AVDD + 0.3<br>DVDD + 0.3 | V     |   |
| Input current (latchup immunity) (ISCR)                 | -100 | 100                      | mA    | AEC - Q100 - 004  |
| <b>Electrostatic Discharge</b>                          |      |                          |       |   |
| Electrostatic discharge (ESD) all pins                  |      | ±2                       | kV    | AEC - Q100 - 002  |
| <b>Continuous Power Dissipation</b>                     |      |                          |       |   |
| Total power dissipation (all supplies and outputs) (PT) |      | 50                       | mW    | SSOP20 in still air, soldered on JEDEC standard board @ 125° ambient, static operation with no time limit   |
| <b>Temperature Ranges and Storage Conditions</b>        |      |                          |       |   |
| Storage temperature (TSTRG)                             | -50  | 125                      | °C    |   |
| Junction temperature (TJ)                               |      | 130                      | °C    |   |
| Thermal resistance (RthJC)                              |      | 80                       | K/W   | JEDEC standard test board, 0 air velocity   |
| Package body temperature (TBDY)                         |      | 260                      | °C    | Norm: IPC/JEDEC J-STD-020<br>The reflow peak soldering temperature (body temperature) is specified according IPC/JEDEC J-STD-020 "Moisture/Reflow Sensitivity Classification for Nonhermetic Solid State Surface Mount Devices".<br>The lead finish for Pb-free leaded packages is matte tin (100% Sn). |
| Humidity non-condensing                                 | 5    | 85                       | %     |   |

## 6 Electrical Characteristics

### 6.1 Operating Conditions

Table 3. Operating Conditions

| Symbol            | Parameter                                 | Conditions | Min  | Max   | Units |
|-------------------|---|------------|------|-------|-------|
| AVDD              | Positive analog supply voltage            |            | 3.0  | 3.6   | V     |
| AVSS              | 0V Ground                                 |            | 0    | 0     | V     |
| A - D             | Difference in analog and digital supplies |            |      | 0.1   | V     |
| DVDD              | Positive digital supply                   |            | 2.97 | 3.63  | V     |
| DVSS              | 0V Digital Ground                         |            | 0    | 0     | V     |
| T <sub>AMB</sub>  | Ambient temperature                       |            | -40  | 125   | °C    |
| I <sub>SUPP</sub> | Supply current                            |            |      | 5.5   | mA    |
| f <sub>CLK</sub>  | System clock frequency <sup>1</sup>       |            |      | 4.096 | MHz   |

1. Nominal clock frequency from external or internal oscillator.

### 6.2 DC/AC Characteristics for Digital Inputs and Outputs

All pull-up and pull-down have been implemented with active devices. SDO has been measured with 10pF load.

Table 4. INT

| Symbol            | Parameter                 | Conditions | Min | Typ | Max | Units |
|-------------------|---------------------------|------------|-----|-----|-----|-------|
| I <sub>LEAK</sub> | Tri-state leakage current |            | -1  |     | +1  | μA    |
| V <sub>OH</sub>   | High level output voltage |            | 2.5 |     |     | V     |
| V <sub>OL</sub>   | Low level output voltage  |            |     |     | 0.4 | V     |
| I <sub>O</sub>    | Output Current            |            |     |     | 4   | mA    |

Table 5. CS Input

| Symbol            | Parameter                | Conditions               | Min  | Typ | Max | Units |
|-------------------|--------------------------|--------------------------|------|-----|-----|-------|
| V <sub>IH</sub>   | High level input voltage |                          | 2.0  |     |     | V     |
| V <sub>IL</sub>   | Low level input voltage  |                          |      |     | 0.8 | V     |
| I <sub>LEAK</sub> | Input leakage current    |                          | -1   |     | +1  | μA    |
| I <sub>pu</sub>   | Pull up current          | CS pulled to DVDD = 3.3V | -150 |     | -15 | μA    |

Table 6. SDI

| Symbol            | Parameter                | Conditions | Min | Typ | Max | Units |
|-------------------|--------------------------|------------|-----|-----|-----|-------|
| V <sub>IH</sub>   | High level input voltage |            | 2.0 |     |     | V     |
| V <sub>IL</sub>   | Low level input voltage  |            |     |     | 0.8 | V     |
| I <sub>LEAK</sub> | Input leakage current    |            | -1  |     | +1  | μA    |

Table 7. SDO Output

| Symbol          | Parameter                 | Conditions                | Min | Typ | Max | Units |
|-----------------|---------------------------|---------------------------|-----|-----|-----|-------|
| V <sub>OH</sub> | High level output voltage | I <sub>source</sub> = 8mA | 2.5 |     |     | V     |
| V <sub>OL</sub> | Low level output voltage  | I <sub>sink</sub> = 8mA   |     |     | 0.4 | V     |
| I <sub>o</sub>  | Output Current            |                           |     |     | 8   | mA    |

Table 8. CHOP\_CLK Output

| Symbol          | Parameter                 | Conditions | Min | Typ | Max | Units |
|-----------------|---------------------------|------------|-----|-----|-----|-------|
| V <sub>OH</sub> | High level output voltage |            | 2.5 |     |     | V     |
| V <sub>OL</sub> | Low level output voltage  |            |     |     | 0.4 | V     |
| I <sub>o</sub>  | Output Current            |            |     |     | 4   | mA    |

Table 9. CLK I/O with Input Schmitt Trigger and Output Buffer

| Symbol            | Parameter                 | Conditions         | Min | Typ | Max | Units |
|-------------------|---------------------------|--------------------|-----|-----|-----|-------|
| V <sub>IH</sub>   | High level input voltage  | DVDD = 3.3V        | 2.4 |     |     | V     |
| V <sub>IL</sub>   | Low level input voltage   | DVDD = 3.3V        |     |     | 1.0 | V     |
| I <sub>LEAK</sub> | Input leakage current     |                    | -1  |     | +1  | μA    |
| I <sub>PD</sub>   | Pull down current         | CLK pulled to DVSS | 10  |     | 100 | μA    |
| I <sub>o</sub>    | Output Current            |                    |     |     | 4   | mA    |
| V <sub>OH</sub>   | High level output voltage |                    | 2.5 |     |     | V     |
| V <sub>OL</sub>   | Low level output voltage  |                    |     |     | 0.4 | V     |

Table 10. SCLK with Input Schmitt Trigger

| Symbol            | Parameter                | Conditions  | Min | Typ | Max | Units |
|-------------------|--------------------------|-------------|-----|-----|-----|-------|
| V <sub>IH</sub>   | High level input voltage | DVDD = 3.3V | 2.4 |     |     | V     |
| V <sub>IL</sub>   | Low level input voltage  | DVDD = 3.3V |     |     | 1.0 | V     |
| I <sub>LEAK</sub> | Input leakage current    |             | -1  |     | +1  | μA    |

Table 11. MEN Output

| Symbol          | Parameter                 | Conditions | Min | Typ | Max | Units |
|-----------------|---------------------------|------------|-----|-----|-----|-------|
| V <sub>OH</sub> | High level output voltage |            | 2.5 |     |     | V     |
| V <sub>OL</sub> | Low level output voltage  |            |     |     | 0.4 | V     |
| I <sub>o</sub>  | Output Current            |            |     |     | 2   | mA    |



## 6.3 Detailed System and Block Specifications

### 6.3.1 Electrical System Specifications

Table 12. Electrical System Specifications

| Symbol             | Parameter                        | Min | Typ | Max | Units | Notes  |
|--------------------|----------------------------------|-----|-----|-----|-------|--|
| IDD <sub>NOM</sub> | Current consumption normal mode  |     | 3   | 5.5 | mA    |  |
| IDD <sub>SBM</sub> | Current consumption standby mode |     | 40  |     | μA    | Average of NORMAL Mode Power consumption over a period of 10sec when the device is in STANDBY Mode |

### 6.4 Current Measurement Ranges (across 100μΩ shunt resistor)

Table 13. Current Measurement Ranges

| Symbol | Parameter                                       | I <sub>max</sub><br>[A] | V <sub>sh</sub><br>[mV] | PGA<br>Gain<br>Nominal | Data Rate<br>(f <sub>OUT</sub> ) | V <sub>INADC</sub> <sup>1</sup><br>[mV] | PSR <sup>2</sup><br>[dB] |
|--------|---|-------------------------|-------------------------|------------------------|----------------------------------|---|--------------------------|
| I10    | Input current range of 10A in NOM               | ±10                     | ±1                      | 100                    | @ 1 kHz                          | ±100                                    | 60                       |
| I200   | Input current range of 200A in NOM              | ±200                    | ±20                     | 40                     | @ 1 kHz                          | ±800                                    | 60                       |
| I400   | Input current range of 400A in NOM              | ±400                    | ±40                     | 25                     | @ 1 kHz                          | ±1000                                   | 60                       |
| I1500  | Input current range of 1500A in NOM             | ±1500                   | ±150                    | 5                      | @ 1 kHz                          | ±750                                    | 60                       |
| I1     | Input current range of 1A in SBM <sup>3</sup>   | ±1                      | ±0.1                    | 100                    | @ 1 Hz                           | ±10                                     | 60                       |
| I10    | Input current range of 10A in SBM <sup>3</sup>  | ±10                     | ±1                      | 100                    | @ 1 Hz                           | ±100                                    | 60                       |
| I200   | Input current range of 200A in SBM <sup>3</sup> | ±200                    | ±20                     | 40                     | @ 1 Hz                           | ±800                                    | 60                       |

1. V<sub>INADC</sub> = V<sub>sh</sub> \* Gain, gain deviations to be considered according to [Table 15](#) and [Table 16](#).

2. AVDD, DVDD of 3.3V with ±5% variation.

3. For low power current monitoring, single shot measurement is performed with internal oscillator.

**Note:** The Data Rate at the output can be calculated according to the formula:

$$f_{\text{out}} = 2 * f_{\text{chop}} / R2 \text{ (R2 is down sampling ratio taking values 1, 2, 4 up to 32768 as powers of 2)}$$

Table 14. Valid Combinations of the Chopper Clock, Oversampling Clock and Decimation Ratios

| Over Sampling Frequency | Chopper Frequency | Decimation Ratio |
|-------------------------|-------------------|------------------|
| 1MHz                    | 2kHz              | 64               |
| 2MHz                    | 2kHz              | 64               |
| 2MHz                    | 2kHz              | 128              |
| 2MHz                    | 4kHz              | 64               |

### 6.4.1 Differential Input Amplifier for Current Channel

Table 15. Differential Input Amplifier for Current Channel

| Symbol               | Parameter                                      | Conditions   | Min      | Typ          | Max      | Units  |
|----------------------|--|--|----------|--------------|----------|--------|
| V <sub>IN_AMP</sub>  | Input voltage range                            | RSHH and RSHL  | -160     |              | +160     | mV     |
| I <sub>IN_AMP</sub>  | Input current <sup>1, 11</sup>                 | RSHH and RSHL @ +160mV input voltage at 125°C with PGA       | -50      | 2            | 50       | nA     |
| ICM                  | Absolute input voltage range <sup>2</sup>      |  |          | -160<br>+300 |          | mV     |
| G = G1               | Gain1 <sup>3, 4, 9</sup>                       | I10  |          | 100          |          |        |
| G = G2               | Gain2 <sup>3, 4, 9</sup>                       | I200   |          | 40           |          |        |
| G = G3               | Gain3 <sup>3, 4, 9</sup>                       | I400   |          | 25           |          |        |
| G = G4               | Gain4 <sup>3, 4, 9</sup>                       | I1500  |          | 5            |          |        |
| e                    | Gain deviation                                 | i = 1, 2, 3, 4   | 0.9 * Gi |              | 1.1 * Gi |        |
| f <sub>p_AMP</sub>   | Pole frequency <sup>4, 5</sup>                 |  | 15       |              |          | kHz    |
| ε <sub>T1</sub>      | Gain drift with temperature <sup>6</sup>       | -20°C to +65°C<br>Gain 5, 25, referenced to room temperature |          |              | ±0.3     | %      |
| V <sub>OSDRIFT</sub> | Offset drift with temperature <sup>7, 10</sup> |  |          | 350          |          | μV     |
| V <sub>os</sub>      | Input referred offset <sup>7, 10</sup>         | After trim,<br>for temperature range -20 to +65°C            |          |              | 350      | μV     |
| V <sub>os_ch</sub>   |  | Chopping enabled   |          | 0            |          | LSB    |
| V <sub>Ndin</sub>    | Noise density <sup>4, 8</sup>                  |  |          | 25           |          | nV/√Hz |
| THD                  | Total harmonic distortion                      | For 150 Hz input signal                                      |          | 70           |          | dB     |

#### Notes:

1. Leakage test accuracy is limited by tester resource accuracy and tester hardware.
2. For gain 100 PGA input common mode is 0V and the minimum supply is 3.15V.
3. The measurement ranges are referred only by the gain of input amplifier, while other parameters such as bandwidth etc. are programmed independently.
4. This parameter is not measured directly in production. It is measured indirectly via gain measurements of the whole path. It is guaranteed by design.
5. Pole frequency of input amplifier changes with GAIN. The number is valid for the gain at G1, while the bandwidth will be higher for other ranges. This parameter is not measured in production.
6. Based on device evaluation. Not tested.
7. These offsets are cancelled if chopping enabled (default).
8. Noise density calculated by taking system bandwidth as 150Hz.
9. Refer to Measurement Ranges shown in [Table 13](#).
10. No impact on the measurement path. If the chopping is enabled, both the offset and offset drift will be eliminated.
11. For negative input voltages up to -160mV below ground, Input leakage is typically -20nA @ 65°C due to forward conductance of protection diode.

### 6.4.2 Differential Input Amplifier for Voltage Channel

Table 16. Differential Input Amplifier for Voltage Channel

| Symbol    | Parameter                                  | Conditions   | Min      | Typ          | Max      | Units  |
|-----------|--|--|----------|--------------|----------|--------|
| VIN_AMP   | Input voltage range <sup>1, 10</sup>       |  | -160     |              | +160     | mV     |
| IIN_AMP   | Input current <sup>2, 10</sup>             | VBAT_IN, ETR, ETS @ +160mV input voltage at 125°C with PGA   | -50      | 2            | 50       | nA     |
| ICM       | Absolute input voltage range <sup>3</sup>  |  |          | -160<br>+300 |          | mV     |
| G = G1    | Gain1 <sup>4, 5</sup>                      |  |          | 100          |          |        |
| G = G2    | Gain2 <sup>4, 5</sup>                      |  |          | 40           |          |        |
| G = G3    | Gain3 <sup>4, 5</sup>                      |  |          | 25           |          |        |
| G = G4    | Gain4 <sup>4, 5</sup>                      |  |          | 5            |          |        |
| e         | Gain deviation                             | i = 1, 2, 3, 4   | 0.9 * Gi |              | 1.1 * Gi |        |
| fp_AMP    | Pole frequency <sup>5, 6</sup>             |  | 15       |              |          | kHz    |
| VNDIN     | Noise density <sup>5, 7</sup>              |  |          | 25           |          | nV/√Hz |
| THD       | Total harmonic distortion                  | For 150Hz input signal                                       |          | 70           |          | dB     |
| εT1       | Gain drift with temperature <sup>8</sup>   | -20°C to +65°C<br>Gain 5, 25, referenced to room temperature |          |              | ±0.3     | %      |
| VOS       | Input referred offset <sup>9</sup>         | After trim at +65°C  |          |              | 350      | μV     |
| Vos_ch    |  | Chopping enabled   |          | 0            |          | LSB    |
| VOUSDRIPT | Offset drift with temperature <sup>9</sup> |  |          | 350          |          | μV     |

#### Notes:

1. Input for the voltage channel can be as high as 1220mV, in this high input case PGA will be bypassed.
2. Leakage test accuracy is limited by tester resource accuracy and tester hardware, especially at low temperatures due to condensing moisture.
3. For gain 100 PGA input common mode is 0V and the minimum supply is 3.15V.
4. The measurement ranges are referred only by the gain of input amplifier, while other parameters such as bandwidth etc. are programmed independently.
5. This parameter is not measured directly in production. It is measured indirectly via gain measurements of the whole path. It is guaranteed by design.
6. Pole frequency of input amplifier changes with changing the GAIN. The number is valid for the gain at G1, while the bandwidth will be higher for other ranges. This parameter is not measured in production.
7. Noise density calculated by taking system bandwidth as 150Hz.
8. Based on device evaluation. Not tested.
9. No impact on the measurement path. If the chopping is enabled, both the offset and offset drift will be eliminated.
10. For negative input voltages up to -160mV below ground, Input leakage is typically -20nA @ 65°C due to forward conductance of protection diode.

### 6.4.3 Sigma Delta Analog to Digital Converter

Table 17. Sigma Delta Analog to Digital Converter

| Symbol              | Parameter  | Conditions      | Min | Typ           | Max   | Units |
|---------------------|--|-----------------|-----|---------------|-------|-------|
| VREF                | Reference voltage <sup>6</sup>                   |                 |     | 1.225         |       | V     |
| V <sub>IN</sub> ADC | Input range <sup>1</sup>                         | At Vref = 1.22V | 0   |               | ±1.22 | V     |
| R1                  | Oversampling ratio/Decimation Ratio <sup>2</sup> |                 | 64  | 128           | 128   |       |
| fovs                | Oversampling frequency <sup>3</sup>              |                 |     | 1024/<br>2048 |       | kHz   |
| RES                 | Number of bits                                   |                 |     |               | 16    | bits  |
| BW                  | Bandwidth <sup>4</sup>                           |                 | 1   |               | 500   | Hz    |
| S/N                 | Signal to noise ratio <sup>5</sup>               |                 |     | 90            |       | dB    |

**Notes:**

1. Production test at ±800mV. Maximum V<sub>IN</sub> can be 1.22V with VREF=1.225V.
2. Programmable. It is defined with respect to the first decimator in the ΣΔ ADC.
3. Programmable: Internal clock is 1024/2048 kHz; external clock max is 8192 kHz.
4. Dependent on f<sub>ovs</sub>, R1 and R2. The bandwidth is calculated according to the formula:  
 $BW = f_{ovs} / (2 \cdot R1 \cdot R2)$ ; the sampling frequency at the output of the A/D converter is  $2 \cdot BW$ .
5. Defined at maximum input signal, BW=500 Hz (1Hz to 500 Hz), f<sub>ovs</sub>=1024 kHz, R1=64, f<sub>chop</sub>=2 kHz and R2=2.
6. Reference voltage might be forced from external.

### 6.4.4 Bandgap Reference Voltage

Table 18. Bandgap Reference Voltage

| Symbol                | Parameter  | Conditions                                     | Min  | Typ           | Max  | Units  |
|-----------------------|--|--|------|---------------|------|--------|
| VREF <sub>TRIM</sub>  | Reference Voltage after trim <sup>1,2</sup>          | Trim at 65°C                                   |      | 1.225         |      | V      |
| VREF <sub>ACC</sub>   | Reference Voltage Initial Accuracy <sup>1,2</sup>    | At 65°C  |      |               | ±3.5 | mV     |
| VREF <sub>DRIFT</sub> | Reference Voltage Temperature drift                  | Temperature range<br>-20 to 65 °C (see note 4) |      |               | ±0.4 | %      |
|                       |  | Temperature range<br>-40 to 125 °C             |      | +0.4/<br>-0.6 |      | %      |
| PSRR <sub>REF</sub>   | PSR @ dc   |  |      | 80            |      | dB     |
| SUT <sub>AVDD</sub>   | Start Up Time with supply ramp <sup>3</sup>          |  |      | 5             |      | ms     |
| SUT <sub>PD</sub>     | Start Up Time from power down <sup>3</sup>           |  |      |               | 1    | ms     |
| RNDVREF               | Output resistance of band gap                        |  |      | 200           | 500  | Ω      |
| VNDVREF               | Bandgap reference thermal noise density <sup>3</sup> |  |      |               | 300  | nV/√Hz |
| CLVREF                | Output Capacitor (Ceramic)                           |  |      | 100           |      | nF     |
| ESRVREF               |  |  | 0.02 |               | 1    | Ω      |

**Notes:**

1. Accuracy at 65°C.
2. No DC current is allowed from this pin.
3. This is a design parameter and not production tested.

#### 6.4.5 Internal (Programmable) Current Source for External Temperature Measurement

Table 19. External Temperature Measurement

| Symbol     | Parameter   | Conditions                        | Min | Typ  | Max    | Units    |
|------------|---|-----------------------------------|-----|------|--------|----------|
| ICURON     | 5-bit current source enabled <sup>1</sup>                 | 5-bit programmable current source | 0   | 270  | 320    | μA       |
| ICUROFF    | 5-bit current source disabled                             | Limited by leakage                |     | 10   |        | nA       |
| Tk_CS      | Temperature coefficient of current source <sup>2</sup>    |                                   |     | 1000 |        | ppm / °K |
| VMAXETR    | Voltage on pin ETR <sup>3</sup>                           |                                   |     |      | 1000/G | mV       |
| VMAXETRMOD | Max voltage on pin ETR when PGA is bypassed <sup>4</sup>  |                                   |     |      | 1.22   | V        |
| VMAXETS    | Voltage on pin ETS for resistor sensor <sup>3</sup>       |                                   |     |      | 1000/G | V        |
| VMAXETSMOD | Max. Voltage on pin ETS when PGA is bypassed <sup>5</sup> |                                   |     |      | 1.22   | V        |

**Notes:**

1. Current value can be programmed in steps of 8mAmps from 0 to 256 mA with a process error of 30%.
2. Temperature coefficient is not important since external temperature measurement is a 2 step measurement. The value specified is guaranteed by design and will not be tested in production.
3. Maximum voltage on pin ETR (reference) can be calculated by given formula, where G is the gain of PGA (G=100).
4. Maximum voltage on pin ETR, if PGA is bypassed.
5. Maximum voltage on pin ETS, if PGA is bypassed.

#### 6.4.6 CMREF Circuit (VCM)

Table 20. CMREF Circuit

| Symbol           | Parameter        | Min | Typ | Max | Units |
|------------------|------------------|-----|-----|-----|-------|
| V <sub>VCM</sub> | Output voltage   | 1.6 | 1.7 | 1.8 | V     |
| C <sub>L</sub>   | Load capacitance |     | 100 |     | nF    |

#### 6.4.7 Internal AVDD Power-on Reset

Table 21. Internal AVDD Power-on Reset

| Symbol              | Parameter  | Min | Typ | Max | Units |
|---------------------|--|-----|-----|-----|-------|
| V <sub>PORHIA</sub> | Power On Reset Threshold   | 2.2 | 2.4 | 2.6 | V     |
| t <sub>PORA</sub>   | POR time - The duration from Power ON till the time, internal Power On Reset signal goes HIGH <sup>1</sup> | 1   |     |     | μs    |
| I <sub>PORA</sub>   | Current consumption in POR block <sup>2</sup>  |     | 1.5 |     | μA    |

1. POR pulse is always longer than t<sub>PORA</sub> whatever the slope of the supply.

2. I<sub>PORA</sub> can not be switched off.

#### 6.4.8 Internal DVDD Power-on Reset

Table 22. Internal DVDD Power-on Reset

| Symbol              | Parameter  | Min | Typ  | Max | Units |
|---------------------|--|-----|------|-----|-------|
| V <sub>PORHID</sub> | Power On Reset Threshold   | 2.2 | 2.4  | 2.7 | V     |
| V <sub>HYST</sub>   | Hysteresis <sup>1</sup>  | 0.2 | 0.25 | 0.4 | V     |
| t <sub>PORD</sub>   | POR time - The duration from Power ON till the time, internal Power On Reset signal goes HIGH <sup>2</sup> | 1   |      |     | μs    |
| I <sub>PORD</sub>   | Current <sup>3</sup>   |     | 1.5  |     | μA    |

1. V<sub>PORLO</sub> = V<sub>PORHI</sub> - V<sub>HYST</sub> where V<sub>PORLO</sub> is the lower threshold of POR.

2. V<sub>PORLO</sub> = V<sub>PORHI</sub> - V<sub>HYST</sub> where V<sub>PORLO</sub> is the lower threshold of POR.

3. I<sub>PORD</sub> can not be switched off.

#### 6.4.9 Low Speed Oscillator

Table 23. Low Speed Oscillator

| Symbol              | Parameter      | Min | Typ     | Max | Units |
|---------------------|----------------|-----|---------|-----|-------|
| f <sub>LS</sub>     | Frequency      |     | 262.144 |     | kHz   |
| f <sub>LS_ACC</sub> | Accuracy       |     | ± 7     |     | %     |
| I <sub>LS</sub>     | Supply current |     | 5       |     | μA    |

#### 6.4.10 High Speed Oscillator

Table 24. High Speed Oscillator

| Symbol      | Parameter               | Min | Typ     | Max | Units   |
|-------------|-------------------------|-----|---------|-----|---------|
| $f_{HS}$    | Frequency               |     | 4.096   |     | MHz     |
| $f_{HSACC}$ | Accuracy <sup>1,2</sup> |     | $\pm 4$ |     | %       |
| $I_{HS}$    | Supply current          |     | 300     |     | $\mu A$ |

**Notes:**

1. Accuracy after trimming.
2. Accuracy for limited temperature range of -20 to 65 °C.

#### 6.4.11 External Clock

Table 25. External Clock

| Symbol         | Parameter                    | Conditions   | Min | Typ                    | Max | Units |
|----------------|------------------------------|--|-----|------------------------|-----|-------|
| $f_{CLKEXT}$   | Clock frequency              |  |     | 2048/<br>4096/<br>8192 |     | kHz   |
| $DIV_{CLKEXT}$ | Clock division factor        | to be programmed in Register 08<br>CLK_REG through the serial bus SPI. |     | 2/4/8                  |     |       |
| $DC_{CLKEXT}$  | Duty Cycle of external clock |  | 40  |                        | 60  | %     |

#### 6.4.12 Internal Temperature Sensor

Table 26. Internal Temperature Sensor

| Symbol          | Parameter                           | Conditions  | Min   | Typ   | Max   | Units    |
|-----------------|-------------------------------------|---|-------|-------|-------|----------|
| $T_{INTRNG}$    | Temperature sensor range            |   | -40   |       | 125   | °C       |
| $\Delta T_{IN}$ | Temperature measurement accuracy    |   |       | 3     |       | °C       |
| $T_{INTSLP}$    | Temperature sensor slope            | Guaranteed by design; at PGA gain 5<br>which is the recommended Gain for<br>internal temperature measurement. |       | 27    |       | Digits/C |
| $T_{INT65G5}$   | Temperature sensor output at gain 5 |   | 40660 | 41807 | 43012 | Digits   |

## 6.5 System Specifications

Table 27. System Specifications

| Symbol         | Parameter  | Min | Typ | Max | Units |
|----------------|--|-----|-----|-----|-------|
| I <sub>s</sub> | Channel to channel isolation <sup>1</sup>                                    |     |     | -90 | dB    |
| A <sub>t</sub> | Difference in channel to channel attenuation<br>@600Hz <sup>1, 2</sup>       |     |     | 3   | dB    |
| Ph             | Difference in phase shift between the two<br>channels @600Hz <sup>1, 2</sup> |     |     | 5   | Deg   |

### System Measurement Error Budget for Voltage and Current Channel.

Temperature Range: -20°C to +65°C; Output data rate is 1kHz, VCC = 3.3V, chopping enabled.

Table 28. System Measurement Error Budget for Gains 5 and 25

| Symbol | Parameter  | Conditions                        | Min | Typ  | Max    | Units |
|--------|--|-----------------------------------|-----|------|--------|-------|
| Err    | System measurement error <sup>3, 4</sup>         |                                   |     | ±0.5 | ±0.8   | %     |
|        | Measurement error due to PGA gain drift          | From device evaluation            |     |      | ±0.3   | %     |
|        | Measurement error due to VREF drift <sup>6</sup> |                                   |     |      | ±0.4   | %     |
|        | Measurement error due to non-linearity of PG     | Tested by distortion measurements |     |      | ±0.025 | %     |

#### Notes:

1. These specifications are defined by taking one channel as reference and measured on the other channel.
2. Guaranteed by design.
3. System measurement error due to noise, individual block parameter drifts and non linearity. Based on evaluation, not tested.
4. System error due to offset is neglected because of chopper architecture.



## 7 Detailed Description

The AS8510 consists of two independent high resolution 16-bit SD analog to digital conversion channels. The measurement path of these two channels integrates a programmable gain amplifier, chopper and de-chopper, sigma-delta modulator, decimator and a digital filter for simultaneous measurement of Current and Voltage/Temperature.

The two measurement channels, namely the Current and Voltage/Temperature measurement channels have identical data path.

The input signal is amplified in the Programmable Gain Amplifier (PGA) with any of the selected gains of 1, 5, 25, 40 and 100 facilitating measurement of a wide range of Current, voltage and temperature levels. Gain Settings for different input ranges and any associated restrictions are explained in the [Table 13](#).

Offset in the measurement path is minimized with the use of a chopper and a de-chopper at appropriate stages in the data path. By default the chopper/de-chopper is ON in the measurement path. It may be disabled by programming the appropriate register.

The amplified input signal is converted into a single-bit pulse-density modulated stream by the  $\Sigma$ - $\Delta$  Modulator. A decimator acting as a low-pass filter filters out the quantization noise and generates 16-bit data corresponding to the input signal. The decimation ratios of 64, 128 may be selected in the first filter stage. For reducing data rate further, the second stage decimation can be used.

An optional FIR Filter is provided to offer matched low pass filter response typically required in lead acid battery sensor systems.

### 7.1 Current Measurement Channel

The voltage across a Shunt Resistor, connected in series with the Battery negative terminal, forms the input signal to the Current Measurement channel. RSHH and RSHL are the Current measurement input pins. Offset in the input signal is nullified with the use of a chopper and a de-chopper at appropriate stages in the data path. The programmable gain amplifier in the data path with programmable settings of 1, 5, 25, 40 and 100 enables measurement of current ranges from  $\pm 1\text{A}$  to  $\pm 1500\text{A}$ . The sampled input signal is converted into a single-bit pulse-density modulated stream by the  $\Sigma$ - $\Delta$  Modulator. A decimator acting as a low-pass filter filters out the quantization noise and generates 16-bit data equivalent to the input current signal. The programmable input sampling rate and the decimation ratio determine the output data rates. The data path can be programmed to provide 1Hz to 2 kHz rates in the various modes available. An optional FIR filter is provided to offer matched low pass filter response typically required in lead acid battery sensor systems.

After enabling the current measurement channel, the delay for the availability of the first sample is two conversion cycles.

### 7.2 Voltage/Temperature Measurement Channel

The other two parameters of the Battery for measurement are Voltage and its Temperature. The second channel accepts signals from four independent sources through a Multiplexer as listed below:

- An attenuated battery voltage obtained through appropriate external resistor divider, (or)
- A signal from the external temperature sensor, (or)
- A signal from external reference, (or)
- A signal from the internal temperature sensor.

Apart from this difference in the multiplexing of four input signals, the rest of the data path is identical to the Current measurement channel. RSHH and RSHL are the Current measurement input pins

The Battery Voltage which can go up to 18V is attenuated through a Resistor Divider externally and is applied to the Voltage Channel. For Automotive Battery measurement, the Gain of the PGA should be restricted to 5 and 25. The latency for the first result from the voltage measurement channel is two conversion cycles.

A second option on this measurement channel is to measure Temperature. Internally generated constant current is pumped through the Temperature Sensor with positive temperature coefficient, and, a high-precision resistor. The voltages across the sensor and the resistor form the inputs to the measurement channel one at a time. The difference between the two voltages which is independent of the magnitude of the current is used to determine the temperature accurately. The Voltage across the sensor is applied between the ETS and VSS pins and, the voltage across the high-precision resistor is applied between ETR and VSS. External Temperature measurement involves the acquisition of two signals one after the other using the same constant current source. The latency for the first result from the temperature measurement channel is two conversion cycles.

A third option on the measurement channel is to measure the internal temperature. Hence, one of the three options for measurement of Battery Voltage, External Temperature and, internal temperature may be carried out by selection of appropriate inputs through the internal multiplexer selection.

## 7.3 Digital Implementation of Measurement Path

Figure 3. Block Diagram of Digital Implementation

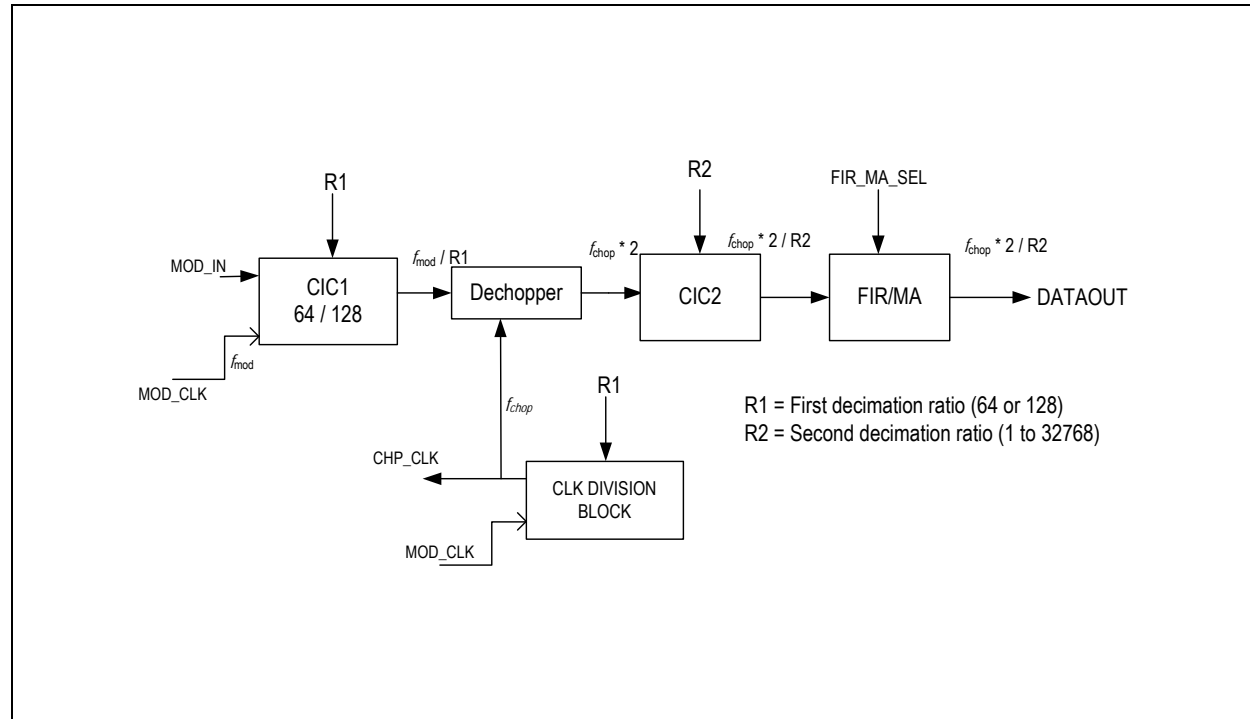


Figure 3 shows the digital implementation of the decimator and filter to process the 1-bit output of the Modulator. This block receives a 1-bit pulse density modulated output (MOD\_IN) from the second order sigma delta modulator along with the oversampling frequency clock (MOD\_CLK). The MOD\_CLK directly goes to a clock division block, which generates chopper clock (CHOP\_CLK). The CHOP\_CLK can be one of 2kHz or 4kHz selected by Register CLK\_REG in Table 33. The MOD\_CLK can be either 1MHz or 2MHz. The Decimation is a two phase process. In the first phase, the R1 down sampling rate can be obtained by selecting either 64 or 128 in Registers DECREG\_R1\_I, DECREG\_R1\_V in Table 33. The 16-bit CIC1 output is dechopped with respect to CHOP\_CLK. The output of Dechopper is passed through the CIC2 filter with a decimation ratio of 1 to 32768 in steps of power of 2. This output is then processed through a FIR or Moving Average (MA) filter. FIR Filter is provided to offer matched low pass filter response typically required in lead acid battery sensor systems. MA filter is used to provide averaged output and the number of samples for averaging can be any integer value from 1 to 15.

## 7.4 Modes of Operation

The device operates in four different modes, namely,

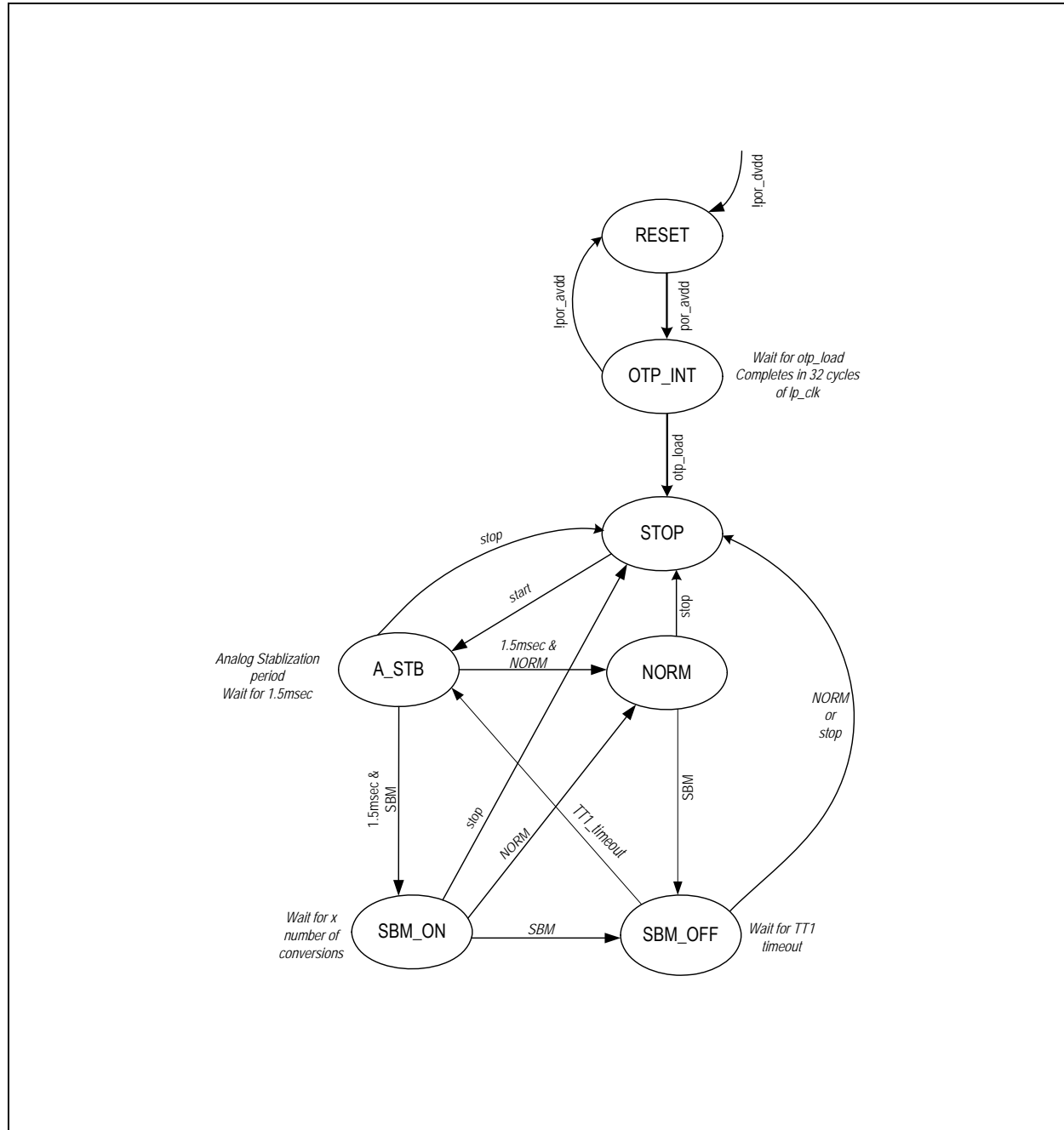
- Normal Mode 1 (NOM1),
- Normal Mode 2 (NOM2),
- Standby Mode 1 (SBY1), and,
- Standby Mode 2 (SBY2).

The Normal Modes are full-power modes with the exception that in Normal Mode 2, sampling is normally at a programmed lower frequency and is increased to a higher rate only when a measured input signal level crosses the programmed threshold in the current measurement channel.

The Standby Modes are lower power modes. Sampling is normally at a very low frequency interval. In Standby Mode 2, data sampling can be carried out only when the internal comparator detects the input current to be greater than the programmed threshold and it generates interrupt on the INT pin.

The device enters into the "Stop" state on Power On. This is a state where in the data path is inactive and can be entered into from any of the four Modes. The State transition Diagram involving the state of Stop and the four Modes is illustrated in the Figure 4.

Figure 4. State Transition Diagram



#### 7.4.1 Normal Mode 1 (NOM1)

On Power-on-reset of the device, AS8510 goes into STOP State.

Transition to Normal mode1 (NOM1) occurs when the "START BIT" D0 of Mode Control Register MOD\_CTL\_REG in Table 33 is set to "1" through the serial port SPI. Data Rate of voltage and current channels can be independently programmed and both the channels generate interrupts for every output available from ADC. The interrupt signal is generated on the INT pin. The width of the interrupt pulse is eight cycles of lp\_clk. The data is stable up to the next interrupt. If the data rate is different for the two channels, the interrupt rate would follow the higher rate among the two channels. Data update can be known by reading the status register. The functionality is explained in the waveform shown in Figure 5. When the device is configured to NOM1 Mode from any mode the configuration should be through the STOP state only.

The diagram illustrates the timing of the AD\_CONVERTER module. It shows three main data streams over time  $t$ :

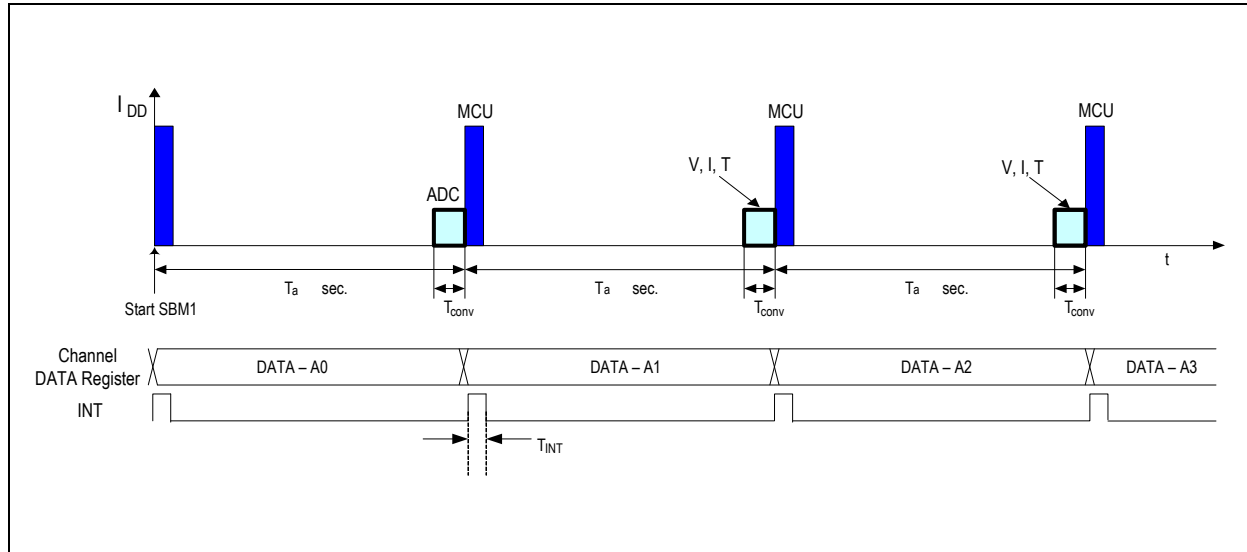
- $I_{DATA}$  (Current Channel):** Labeled "Sampling with  $f_1$ ", it shows a high-frequency series of samples. A specific sample is labeled  $I$ .
- $V,T_{DATA}$  (Voltage Channel):** Labeled "Sampling with  $f_2$ ", it shows a lower-frequency series of samples. A specific sample is labeled  $V,T$ .
- Control and Interrupt Signals:**
  - A **STOP** signal followed by a **START** signal initiates the conversion.
  - The **Current Channel DATA Register** is filled with samples at rate  $f_1$ .
  - The **Voltage Channel DATA Register** is filled with samples at rate  $f_2$ .
  - An **INT at  $f_1$  rate from current channel** signal is shown as a high-frequency pulse train. A note states: "Interrupt from the current channel is at  $f_1$  rate which is integer multiple of  $f_2$  rate from voltage channel".
  - The period of the interrupt signal is labeled  $T_{INT}$ .

Transition to NOM2 occurs when the “START BIT” D0 of Mode Control register MOD\_CTL\_REG in [Table 33](#) is set to 1 and mode control bits to 01 through SPI. In this mode the data rate should be programmed with the time of  $T_{MC}$ . An interrupt signal is generated on INT at the rate of  $T_{MC}$  secs with a pulse width of eight cycles of  $lp\_clk$ . The data is stable up to the next interrupt. The data sample is compared against the programmed threshold and when it is exceeded, the data sampling rate is changed to provide data at the data rate of NOM1 mode. However, as soon as the data sample amplitude falls below the programmed threshold, the sampling rate is restored to provide data at the rate of  $T_{MC}$ . The functionality is illustrated in the waveform [Figure 6](#).

### 7.4.3 Standby Mode1 (SBM1)

The low-power Standby Mode can be entered only through the STOP state. Transition to SBM1 mode occurs when the "START BIT" D0 of Mode Control register MOD\_CTL\_REG in Table 33 is set to "1" and Mode Control Bits to "10" through SPI. In this mode the data rate is programmable with the time of  $T_a$ . An interrupt signal is generated on INT at the rate of  $T_a$  secs., and with a pulse width of eight cycles of  $I_p\_clk$ . The data is stable up to the next interrupt. The functionality is illustrated in Figure. During the period of  $T_a$ , only one data sample is made available and, during the rest of the period, the device is maintained in STOP state to reduce power consumption. The microcontroller which receives the data on the Interrupt, is also expected to be processing the data for a short time as shown clearly in the Figure 7 to ensure the overall low-power consumption of the data acquisition and processing system.

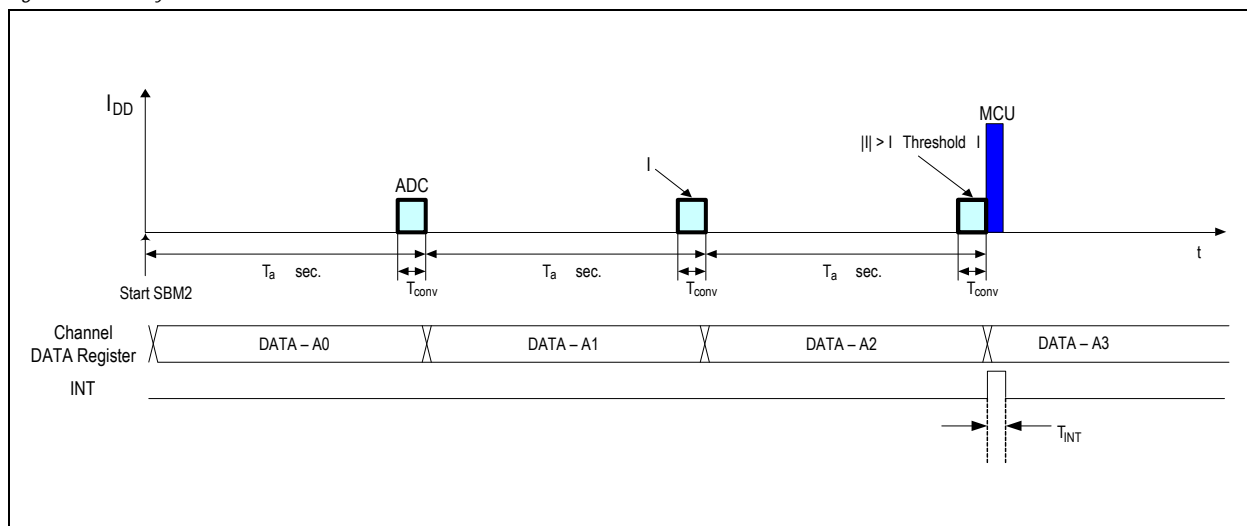
Figure 7. Standby Mode 1



### 7.4.4 Standby Mode2 (SBM2)

Standby Mode 2 is an extension of the Standby Mode1 to achieve even a lower power in the data acquisition system by providing interrupt to the microcontroller only when the data sample exceeds the set current threshold. The Standby Mode can be entered only through the STOP state. Transition to SBM2 mode occurs when the "START BIT" D0 of Mode Control register MOD\_CTL\_REG in Table 33 is set to "1" and Mode Control Bits D7,D6 to "1,1" through SPI. In this mode the data rate is programmable with the time of  $T_a$  in the  $T_a$  control registers B, C. The data sample is made available and an interrupt signal is generated on INT pin only when the input signal exceeds the threshold set in Current Threshold Registers D,E. It should be noted here that the data is stable for  $T_a$  secs. The functionality is illustrated in Figure 8.

Figure 8. Standby Mode 2



## 7.5 Reference-Voltage

Band gap-reference voltage is used for the ADC as a reference and for the generation of the current for external temperature measurement.

## 7.6 Oscillators

A High-speed oscillator (HS) generates the oversampling clock. For internal state machine and Interrupt generation, a low-speed Oscillator (LS) is also available.

## 7.7 Power-On Reset

The AS8510 has PORs, APOR and DPOR on analog and digital power supplies respectively. On PORs of both supplies, initialization sequence happens and the system status is shown in state diagram (see Figure 4).

As shown in the state diagram, the system is in RESET state until DPOR output goes to logic HIGH and subsequently until APOR output goes to logic HIGH. Once analog power supply is available, the system goes into OTP\_INT state and loads the default values into the control and data registers and goes into STOP state. If analog POR, APOR goes low at any time, the system goes into RESET state. In the STOP state, the AS8510 can be programmed and by giving start command it starts working following the state machine.

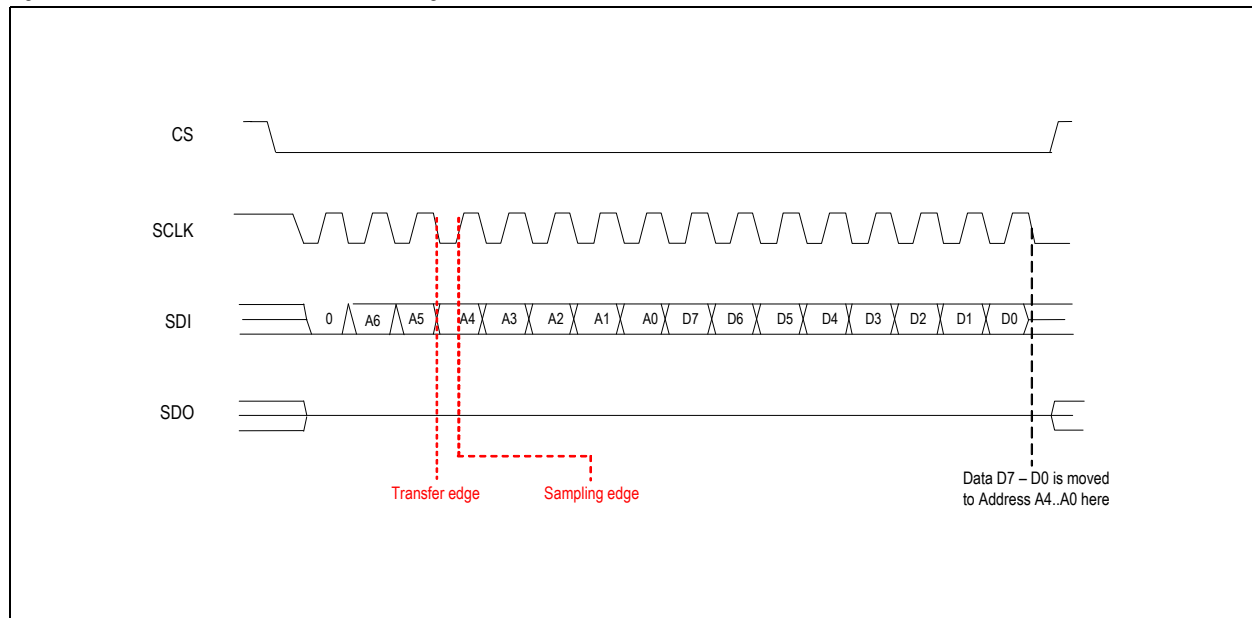
## 7.8 4-Wire Serial Port Interface

The SPI interface is used as interface between the AS8510 and an external micro-controller to configure the device and access the status information. The micro-controller begins communication with the SPI which is configured as a slave. The SPI protocol is simple and the length of each frame is an integer multiple of bytes except when a transmission is started. Each frame has 1 command bit, 7 address/configuration bits, and one or more data bytes. The edge of CS and the level of SCLK during the start of a SPI transaction, determine the edge on which the data is transferred from the SPI and the edge on which the data is sampled by the slave. Table 29 describes the setting of the transfer and sampling edges of SCLK. Figure 9 shows the falling edge and rising edge for data transfer and data sampling respectively, when SCLK is HIGH on the falling edge of CS.

Table 29. CS and SCLK

| CS   | SCLK | Description  |
|------|------|--|
| FALL | LOW  | Serial data transferred on rising edge of SPI clock. Sampled at falling edge of SPI clock. |
| FALL | HIGH | Serial data transferred on falling edge of SPI clock. Sampled at rising edge of SPI clock. |
| ANY  | ANY  | Serial data transfer edge is unchanged.  |

Figure 9. Protocol for Serial Data Write with Length = 1



### 7.8.1 SPI Frame

A frame is formed by a first byte for command and address/configuration and a following bit stream that can be formed by an integer number of bytes. Command is coded on the 1 first bit, while address is given on LSB 7 bits (see Table 30).

Table 30. Command Bits

| Command Bits | Register Address or Transmission Configuration |    |    |    |    |    |    |
|--------------|--|----|----|----|----|----|----|
| C0           | A6   | A5 | A4 | A3 | A2 | A1 | A0 |

Table 31. Command Bits

| C0 | Command | <A6:A0> | Description                                     |
|----|---------|---------|---|
| 0  | WRITE   | ADDRESS | Writes data byte on the given starting address. |
| 1  | READ    | ADDRESS | Read data byte from the given starting address. |

If the command is read or write, one or more bytes follow. When the micro-controller sends more bytes (keeping CS LOW and SCLK toggling), the SPI interface increments the address of the previous data byte and writes/reads data to/from consecutive addresses.

### 7.8.2 Write Command

For write command, C0=0. After the command code C0 is transferred, the address of register to be written is provided from MSB to LSB. Subsequently one or more data bytes can be transferred from MSB to LSB. For each data byte following the first one, used address is the incremented value of the previously written address. Each bit of the frame has to be driven by the SPI master on the SPI clock transfer edge. The SPI slave samples it on the next clock edge. These edges are determined by the level of SCLK as shown in Table 29. Figure 10 and Figure 11 are examples of write command without and with address self-increment.

Figure 10. Protocol for Serial Data Write with Length = 1

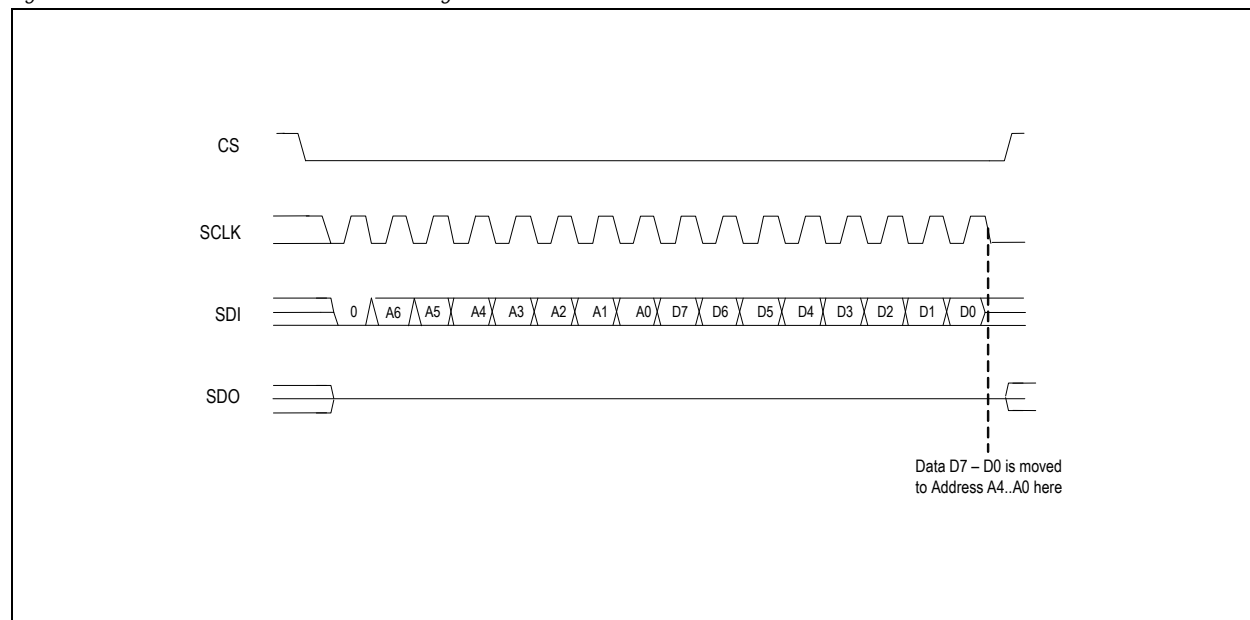
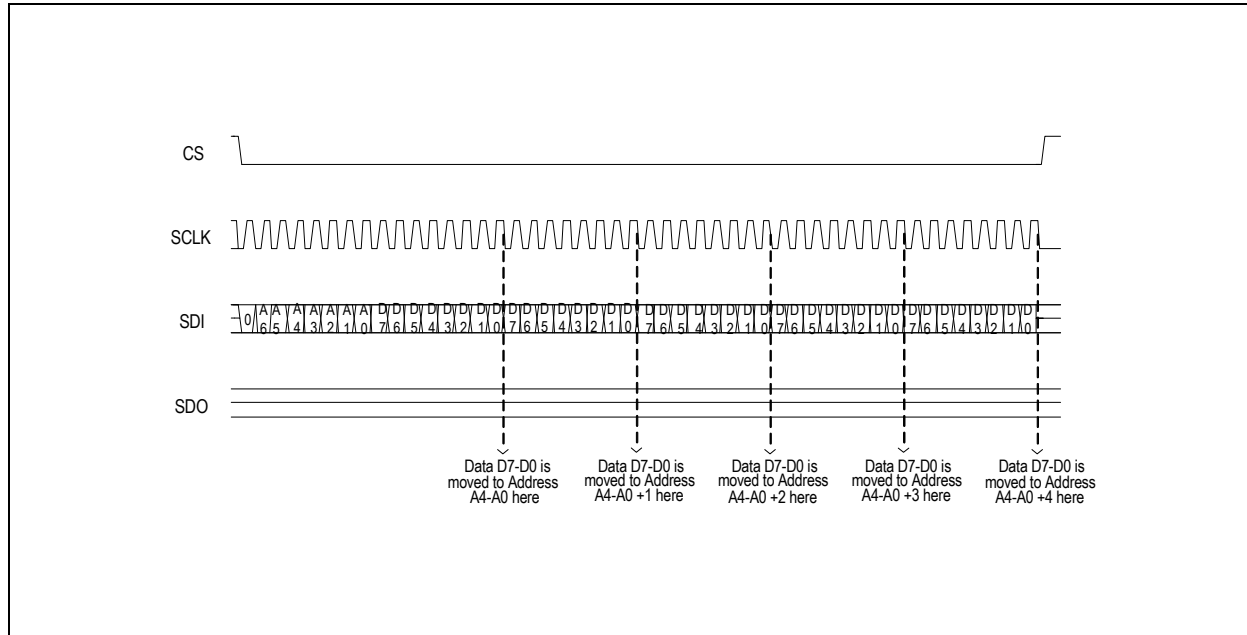


Figure 11. Protocol for Serial Data Write with Length = 4



### 7.8.3 Read Command

For Read command  $C0=1$ . After the command code  $C0$ , the address of register to be read is provided from MSB to LSB. Then one or more data bytes can be transferred from the SPI slave to the master, always from MSB to LSB. To transfer more bytes from consecutive addresses, SPI master keeps CS signal LOW and SPI clock active as long as it desires to read data from the slave. Each bit of the command and address of the frame is to be driven by the SPI master on the SPI clock transfer edge where SPI slave samples it on the next SPI clock edge.

Each bit of the data section of the frame is driven by the SPI slave on the SPI clock transfer edge and SPI master samples it on the next SPI clock edge. These edges are determined as per Table 29 and examples of read command without and with address self-increment.

Figure 12. Protocol for Serial Data Read with Length = 1

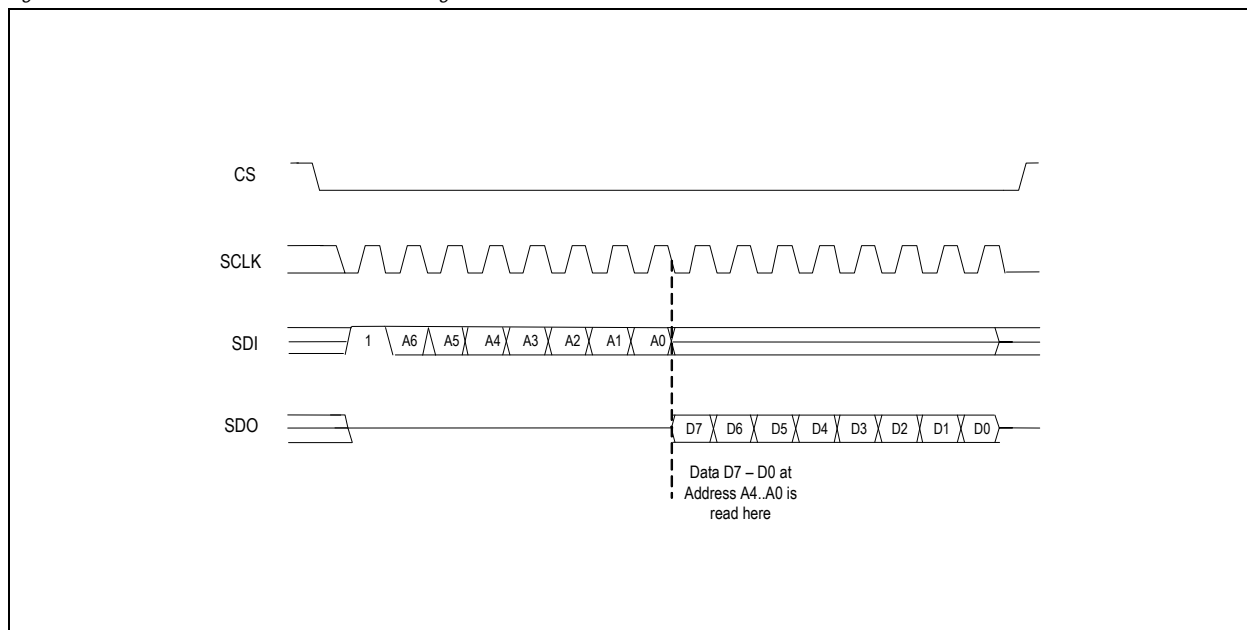
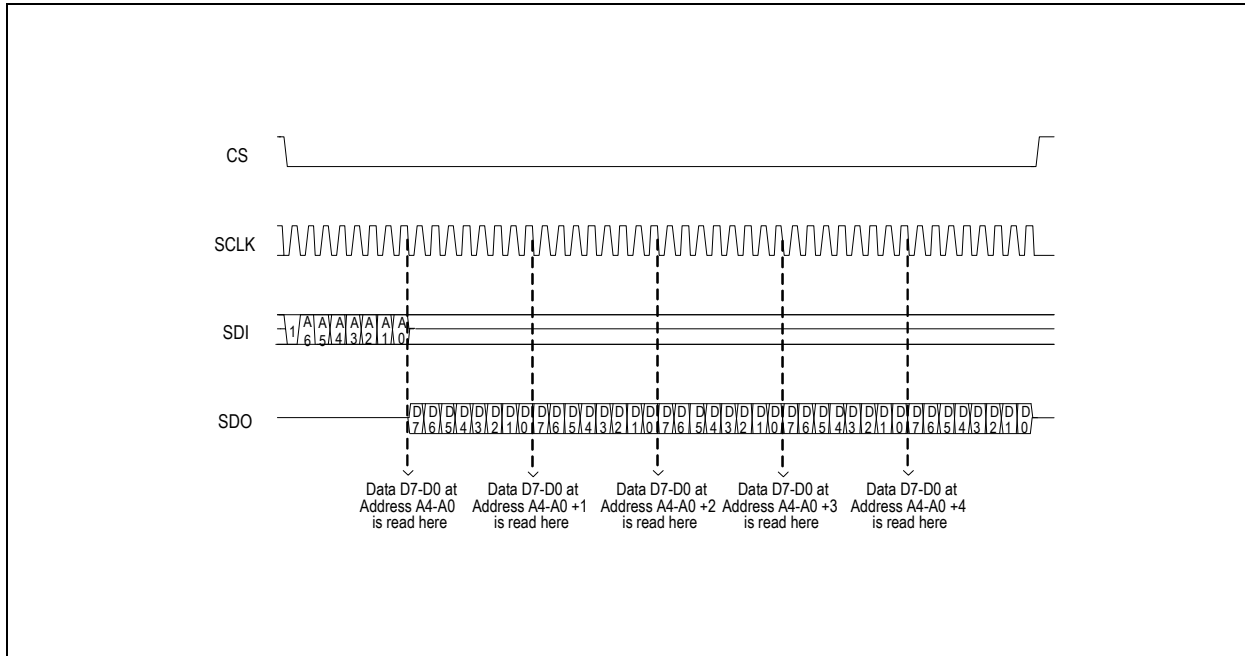




Figure 13. Protocol for Serial Data Read with Length = 4



#### 7.8.4 Timing

In the following timing waveforms and parameters are exposed.

Figure 14. Write Timing for Writing

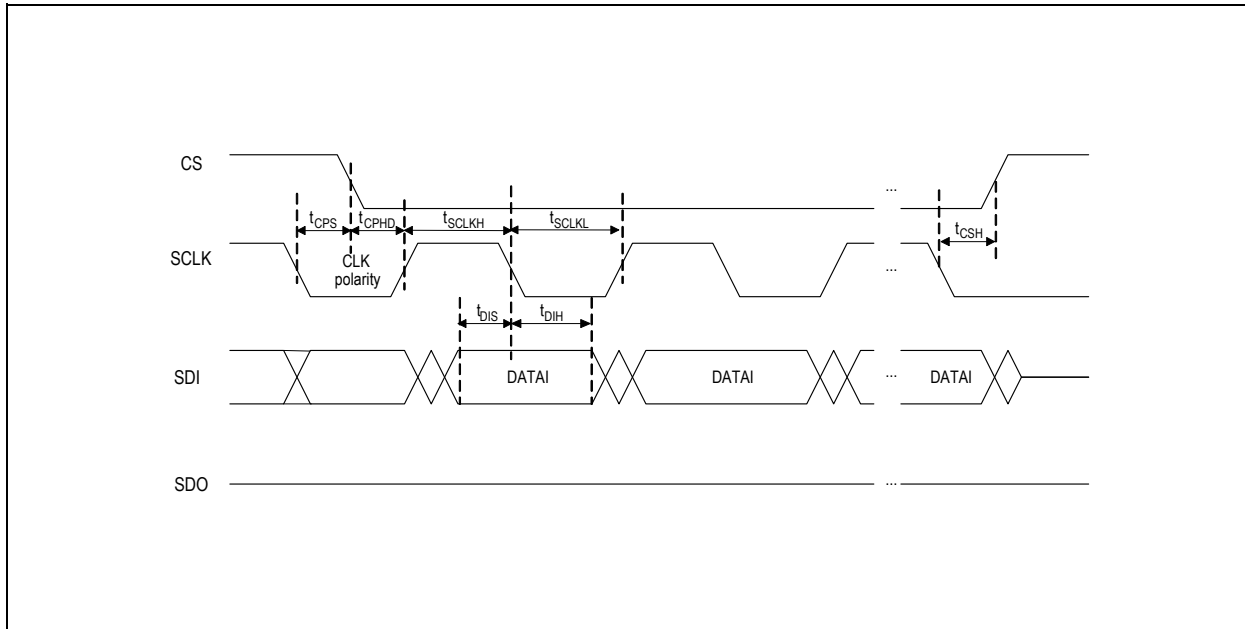
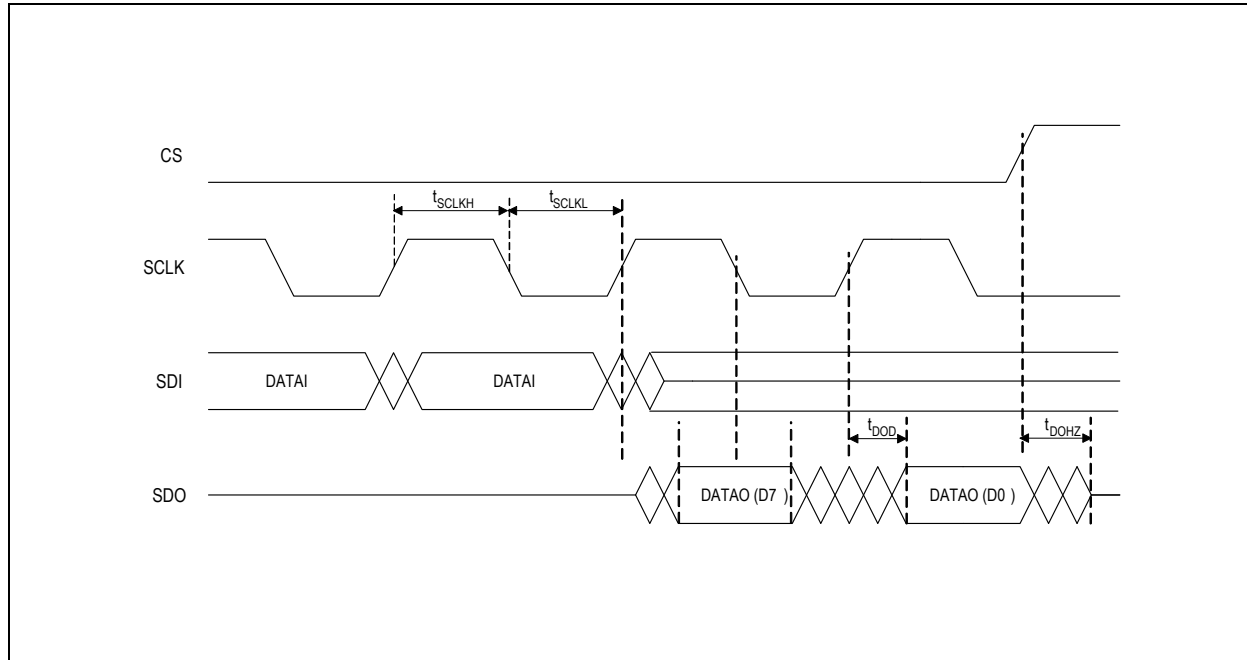


Figure 15. Read Timing for Reading



### 7.8.5 SPI Interface Timing

Table 32. SPI Interface Timing

| Symbol   | Parameter                        | Conditions   | Min | Typ | Max | Units |
|--|----------------------------------|--|-----|-----|-----|-------|
| <b>General</b>   |                                  |  |     |     |     |       |
| $BR_{SPI}$   | Bit rate                         |  |     |     | 1   | Mbps  |
| $T_{SCLKH}$  | Clock high time                  |  | 400 |     |     | ns    |
| $T_{SCLKL}$  | Clock low time                   |  | 400 |     |     | ns    |
| <b>Write timing</b>  |                                  |  |     |     |     |       |
| $t_{DIS}$  | Data in setup time               |  | 20  |     |     | ns    |
| $t_{DIH}$  | Data in hold time                |  | 20  |     |     | ns    |
| $T_{CSH}$  | CS hold time                     |  | 20  |     |     | ns    |
| <b>Read timing</b>   |                                  |  |     |     |     |       |
| $t_{DOD}$  | Data out delay                   |  |     |     | 80  | ns    |
| $t_{DOHZ}$   | Data out to high impedance delay | Time for the SPI to release the SDO bus            |     |     | 80  | ns    |
| <b>Timing parameters when entering 4-Wire SPI mode (for determination of CLK polarity)</b> |                                  |  |     |     |     |       |
| $t_{CPS}$  | Clock setup time (CLK polarity)  | Setup time of SCLK with respect to CS falling edge | 20  |     |     | ns    |
| $t_{CPHD}$   | Clock hold time (CLK polarity)   | Hold time of SCLK with respect to CS falling edge  | 20  |     |     | ns    |

## 7.9 Control Register

This section describes the control registers used in AS8510. Registers can be broadly classified into the following categories.

- Data access registers
- Status Registers
- Digital signal path control registers
- Digital Control registers
- Analog Control Registers

Table 33. Control Registers

| Addr in HEX           | Register Name                              | POR Value | R/W | 8-bit Control / Status Data |  |
|-----------------------|--|-----------|-----|-----------------------------|--|
| Data Access Registers |  |           |     |                             |  |
| 00                    | DREG_I1<br>(ADC Data Register for Current) | 0000_0000 | R   | D[7:0]                      | Denotes the Current ADC MSB Byte (ADC_I[15:8]) |
| 01                    | DREG_I2<br>(ADC Data Register for Current) | 0000_0000 | R   | D[7:0]                      | Denotes the Current ADC LSB Byte (ADC_I[7:0])  |
| 02                    | DREG_V1<br>(ADC Data Register for Voltage) | 0000_0000 | R   | D[7:0]                      | Denotes the Voltage ADC MSB Byte (ADC_V[15:8]) |
| 03                    | DREG_V2<br>(ADC Data Register for Voltage) | 0000_0000 | R   | D[7:0]                      | Denotes the Voltage ADC LSB Byte (ADC_V[7:0])  |
| Status Registers      |  |           |     |                             |  |
| 04                    | STATUS_REG                                 | 0000_0000 | R   | D[7]                        | NOM1/NOM2 Data Ready                           |
|                       |  |           |     | D[6]                        | NOM2 Threshold Crossover                       |
|                       |  |           |     | D[5]                        | SBM1 Data Ready                                |
|                       |  |           |     | D[4]                        | SBM2 Threshold Crossover                       |
|                       |  |           |     | D[3]                        | APOR status                                    |
|                       |  |           |     | D[2]                        | Data from current channel updated              |
|                       |  |           |     | D[1]                        | Data from voltage channel updated              |
|                       |  |           |     | D[0]                        | Reserved                                       |

Table 33. Control Registers

| Addr in HEX   | Register Name | POR Value | R/W | 8-bit Control / Status Data |   |                           |
|---|---------------|-----------|-----|-----------------------------|---|---------------------------|
| Digital Signal Path Control Registers for Current Channel |               |           |     |                             |   |                           |
| 05  | DEC_REG_R1_I  | 0100_0101 | R/W | D[7]                        | This bit selects decimation rate is used for current channel. Default is 0 (Down Sampling Rate is 64)   |                           |
|   |               |           |     |                             | 0   | Down Sampling Rate is 64  |
|   |               |           |     |                             | 1   | Down Sampling Rate is 128 |
|   |               |           |     | D[6:5]                      | These two bits select division ratio of oversampling frequency clock MOD_CLK to be used as chopper clock, CHOP_CLK. Default is "10" (divide by 512) |                           |
|   |               |           |     |                             | 00  | Chopper Clock Always High |
|   |               |           |     |                             | 01  | Divide by 256             |
|   |               |           |     |                             | 10  | Divide by 512             |
|   |               |           |     |                             | 11  | Divide by 1024            |
|   |               |           |     | D[4:1]                      | These four bits select the decimation ratio of second CIC stage. Default is "0010" (equal to 4)   |                           |
|   |               |           |     |                             | 0000  | 1                         |
|   |               |           |     |                             | 0001  | 2                         |
|   |               |           |     |                             | 0010  | 4                         |
|   |               |           |     |                             | 0011  | 8                         |
|   |               |           |     |                             | 0100  | 16                        |
|   |               |           |     |                             | 0101  | 32                        |
|   |               |           |     |                             | 0110  | 64                        |
|   |               |           |     |                             | 0111  | 128                       |
|   |               |           |     |                             | 1000  | 256                       |
|   |               |           |     |                             | 1001  | 512                       |
|   |               |           |     |                             | 1010  | 1024                      |
|   |               |           |     |                             | 1011  | 2048                      |
|   |               |           |     |                             | 1100  | 4096                      |
|   |               |           |     |                             | 1101  | 8192                      |
|   |               |           |     |                             | 1110  | 16384                     |
|   |               |           |     |                             | 1111  | 32768                     |
|   |               |           |     | D[0]                        | CIC1 Saturation Interrupt Mask Control. Default is 1  |                           |
|   |               |           |     |                             | 0   | Unmask                    |
|   |               |           |     |                             | 1   | Mask                      |

Table 33. Control Registers

| Addr in HEX | Register Name | POR Value | R/W | 8-bit Control / Status Data |   |
|-------------|---------------|-----------|-----|-----------------------------|---|
| 06          | DEC_REG_R2_I  | 1100_0101 | R/W | D[7]                        | I-Channel Enable, Default 1=enable  |
|             |               |           |     | D[6]                        | V-Channel Enable, Default 1=enable  |
|             |               |           |     | Interrupt polarity          |   |
|             |               |           |     | D[5]                        | 0 Active high   |
|             |               |           |     |                             | 1 Active low  |
|             |               |           |     | D[4]                        | . Interrupt Mask Control for Current Channel Data Ready Interrupt on INT pin (Default is 0)               |
|             |               |           |     |                             | 0 Unmasked  |
|             |               |           |     |                             | 1 Masked  |
|             |               |           |     | D[3:2]                      | These two bits select the source of output 16-bit data in Normal mode from Current channel. Default is 01 |
|             |               |           |     |                             | 00 FIR / MA Output  |
|             |               |           |     |                             | 01 CIC2 Output  |
|             |               |           |     |                             | 10 Dechop/Demod Output  |
|             |               |           |     |                             | 11 CIC1 Output  |
|             |               |           |     | D[1:0]                      | These two bits select the source of output 16-bit data in SBM mode from Current channel. Default is 01    |
|             |               |           |     |                             | 00 FIR / MA Output  |
|             |               |           |     |                             | 01 CIC2 Output  |
|             |               |           |     |                             | 10 Dechop/Demod Output  |
|             |               |           |     |                             | 11 CIC1 Output  |

Table 33. Control Registers

| Addr in HEX | Register Name | POR Value | R/W | 8-bit Control / Status Data |   |
|-------------|---------------|-----------|-----|-----------------------------|---|
| 07          | FIR CTL_REG_I | 0000_0100 | R/W | D[7]                        | This bit selects FIR / MA Filter in Current channel. Default is 0 (FIR)   |
|             |               |           |     |                             | 0      FIR  |
|             |               |           |     |                             | 1      MA Filter  |
|             |               |           |     | D[6:3]                      | These bits select the number of data samples for averaging in MA filter in Current channel. Default is 0000 (bypass)              |
|             |               |           |     |                             | 0000      bypass  |
|             |               |           |     |                             | 0001      1   |
|             |               |           |     |                             | 0011      3   |
|             |               |           |     |                             | 0111      7   |
|             |               |           |     |                             | 1111      15  |
|             |               |           |     | D[2:1]                      | These two bits select the Measurement Path architecture in both Current and Voltage channels. Default is 10 (Dechopper after CIC) |
|             |               |           |     |                             | 00      Demodulator after CIC1  |
|             |               |           |     |                             | 01      Demodulator before CIC1   |
|             |               |           |     |                             | 10      Dechopper after CIC1 (preferred and suggested)  |
|             |               |           |     |                             | 11      Demodulator before CIC1 with settled sample   |
|             |               |           |     | D[0]                        | Reserved. Default 0. Do not change  |

Table 33. Control Registers

| Addr in HEX               | Register Name                         | POR Value | R/W | 8-bit Control / Status Data |   |  |
|---------------------------|---------------------------------------|-----------|-----|-----------------------------|---|--|
| Digital Control Registers |                                       |           |     |                             |   |  |
| 08                        | CLK_REG<br>(Clock Control Register)   | 0010_0000 | R/W | D[7:6]                      | Oversampling frequency clock selection. Default is 00 (high speed (HS) internal Clock)  |  |
|                           |                                       |           |     |                             | 00  | Internal HS Clock with No Clock Output |
|                           |                                       |           |     |                             | 01  | Internal HS Clock with Clock Output    |
|                           |                                       |           |     |                             | 10  | External Clock                         |
|                           |                                       |           |     | D[5:4]                      | These two bits select the division ratio for HS clock/ external clock. Default is 10 (division by 4)  |  |
|                           |                                       |           |     |                             | 00  | No division                            |
|                           |                                       |           |     |                             | 01  | Divide by 2                            |
|                           |                                       |           |     |                             | 10  | Divide by 4                            |
|                           |                                       |           |     | D[3:2]                      | These two bits select the division ratio of HS clock, by which it should be divided before providing it on CLK pin. Default is 00 (No Division) |  |
|                           |                                       |           |     |                             | 00  | No Division                            |
|                           |                                       |           |     |                             | 01  | Divide by 2                            |
|                           |                                       |           |     |                             | 10  | Divide by 4                            |
|                           |                                       |           |     | D[1]                        | This bit selects the division ratio of LS clock   |  |
|                           |                                       |           |     |                             | 0   | LS _CLK undivided (Low Speed clock)    |
| 1                         | LS _CLK divide by 2                   |           |     |                             |   |  |
| D[0]                      | Reserved                              |           |     |                             |   |  |
| 09                        | RESET_REG<br>(Reset Control Register) | 1100_0000 | R/W | D[7]                        | Entire device can be soft reset by writing "0" into this register bit. This bit will take a default 1 value on coming out of Reset              |  |
|                           |                                       |           |     | D[6]                        | Measurement Path can be soft reset by writing "0" into this register bit. This bit will take a default 1 value after Measurement Path is reset. |  |
|                           |                                       |           |     | D[5:0]                      | Reserved  |  |

Table 33. Control Registers

| Addr in HEX | Register Name                                | POR Value | R/W | 8-bit Control / Status Data |  |
|-------------|--|-----------|-----|-----------------------------|--|
| 0A          | MOD_CTL_REG<br>(Mode Control Registers)      | 0000_0000 | R/W | D[7:6]                      | These two bits select the operating mode of the Device.<br>Default is 00 (Normal Mode 1)   |
|             |  |           |     |                             | 00      Normal Mode 1  |
|             |  |           |     |                             | 01      Normal Mode 2  |
|             |  |           |     |                             | 10      Standby Mode 1   |
|             |  |           |     |                             | 11      Standby Mode 2   |
|             |  |           |     | D[5:3]                      | These three bits select the number of cycles to be ignored before comparison with the set threshold in Standby Mode. Default is 000 (3 cycles of data) |
|             |  |           |     |                             | 000      3 cycles of data  |
|             |  |           |     |                             | 001      4 cycles of data  |
|             |  |           |     |                             | 010      5 cycles of data  |
|             |  |           |     |                             | 011      6cycles of data   |
|             |  |           |     |                             | 100      7 cycles of data  |
|             |  |           |     |                             | 101      8 cycles of data  |
|             |  |           |     |                             | 110      9 cycles of data  |
|             |  |           |     |                             | 111      10 cycles of data   |
|             |  |           |     | D[2]                        | This bit controls the CHOP_CLK availability on CHOP_CLK pin.<br>Default is 0   |
|             |  |           |     |                             | 0      Disabled  |
|             |  |           |     |                             | 1      Enabled   |
|             |  |           |     | D[1]                        | Enabling the MEN pin to indicate transition from Standby to Normal Mode.   |
|             |  |           |     |                             | 0      Disabled  |
|             |  |           |     |                             | 1      Enabled   |
|             |  |           |     | D[0]                        | This bit is used to take the device from STOP state to any of the Modes based on D[7:6] selection of this register.                                    |
|             |  |           |     |                             | 0      Retain in STOP state  |
|             |  |           |     |                             | 1      Enables transition to Normal or Standby Modes.  |
| 0B          | MOD_Ta_REG1<br>(Ta Control Register)         | 1000_0000 |     | D[7]                        | Unit of Ta in SBM1/SBM2. Default is 1  |
|             |  |           |     |                             | 0      Unit is in milliseconds   |
|             |  |           |     |                             | 1      Unit is in seconds  |
|             |  |           |     | D[6:0]                      | MSB value of Ta  |
| 0C          | MOD_Ta_REG2<br>(Ta Control Register)         | 0000_0000 | R/W | D[7:0]                      | Unit of Ta in SBM1/SBM2<br>LSB value of Ta   |
| 0D          | MOD_ITH_REG1<br>(Current Threshold Register) | 0000_0000 | R/W | D[7:0]                      | MSB bits of 16 bits SBM2 threshold register  |
| 0E          | MOD_ITH_REG2<br>(Current Threshold Register) | 0000_0000 | R/W | D[7:0]                      | LSB bits of 16 bits SBM2 threshold register  |



Table 33. Control Registers

| Addr in HEX              | Register Name                                 | POR Value | R/W | 8-bit Control / Status Data |   |
|--------------------------|---|-----------|-----|-----------------------------|---|
| 0F                       | MOD_TMC_REG1<br>(TMC Control Registers)       | 0000_0000 | R/W | D[7:0]                      | MSB value of number of data samples to be dropped from ADC before sending Interrupt in NOM2 |
| 10                       | MOD_TMC_REG2<br>(TMC Control Register)        | 0000_0000 | R/W | D[7:0]                      | LSB value of number of data samples to be dropped from ADC before sending Interrupt in NOM2 |
| 11                       | NOM_ITH_REG1                                  | 0000_0000 | R/W | D[7:0]                      | Eight MSB bits of NOM2 current threshold register   |
| 12                       | NOM_ITH_REG2                                  | 0000_0000 | R/W | D[7:0]                      | Eight LSB bits of NOM2 current threshold register   |
| Analog Control Registers |   |           |     |                             |   |
| 13                       | PGA_CTL_REG<br>(PGA Control Registers)        | 0101_0000 | R/W | D[7:6]                      | Setting of Gain G of Current Channel PGA. Default is 01 (G = 25)                            |
|                          |   |           |     |                             | 00 5  |
|                          |   |           |     |                             | 01 25   |
|                          |   |           |     |                             | 10 40   |
|                          |   |           |     |                             | 11 100  |
|                          |   |           |     | D[5:4]                      | Setting of Gain G in Voltage channel. Default is 01 (G = 25)                                |
|                          |   |           |     |                             | 00 5  |
|                          |   |           |     |                             | 01 25   |
|                          |   |           |     |                             | 10 40   |
|                          |   |           |     |                             | 11 100  |
|                          |   |           |     | D[3:0]                      | Reserved  |
| 14                       | PD_CTL_REG_1<br>(Power Down Control Register) | 1100_1111 | R/W | D[7]                        | 0 Disable Chopper clock to Current channel  |
|                          |   |           |     |                             | 1 Enable Chopper clock to Current channel   |
|                          |   |           |     | D[6]                        | 0 Disable Chopper clock to Voltage channel  |
|                          |   |           |     |                             | 1 Enable Chopper clock to Voltage channel   |
|                          |   |           |     | D[5]                        | Reserved  |
|                          |   |           |     | D[4]                        | Reserved  |
|                          |   |           |     | D[3]                        | 0 Disable Current channel PGA   |
|                          |   |           |     |                             | 1 Enable Current channel PGA  |
|                          |   |           |     | D[2]                        | 0 Disable Current channel $\Sigma\Delta$ Modulator  |
|                          |   |           |     |                             | 1 Enable Current channel $\Sigma\Delta$ Modulator   |
|                          |   |           |     | D[1]                        | 0 Disable Voltage channel PGA   |
|                          |   |           |     |                             | 1 Enable Voltage channel PGA  |
|                          |   |           |     | D[0]                        | 0 Disable Voltage channel $\Sigma\Delta$ Modulator  |
|                          |   |           |     |                             | 1 Enable Voltage channel $\Sigma\Delta$ Modulator   |

Table 33. Control Registers

| Addr in HEX | Register Name                                 | POR Value | R/W | 8-bit Control / Status Data |                                     |   |
|-------------|---|-----------|-----|-----------------------------|-------------------------------------|---|
| 15          | PD_CTL_REG_2<br>(Power Down Control Register) | 1111_0011 | R/W | D[7]                        | 0                                   | Disable CIC1 of both channels                     |
|             |   |           |     |                             | 1                                   | Enable CIC1 of both channels                      |
|             |   |           |     | D[6]                        | 0                                   | Disable CIC2 of both channels                     |
|             |   |           |     |                             | 1                                   | Enable CIC2 of both channels                      |
|             |   |           |     | D[5]                        | 0                                   | Disable Dechopper in both channels                |
|             |   |           |     |                             | 1                                   | Enable Dechopper in both channels                 |
|             |   |           |     | D[4]                        | 0                                   | Disable FIR in both channels                      |
|             |   |           |     |                             | 1                                   | Enable FIR in both channels                       |
|             |   |           |     | D[3]                        | 0                                   | Do not bypass PGA in Current Channel<br>Default 0 |
|             |   |           |     |                             | 1                                   | Bypass PGA in Current Channel                     |
|             |   |           |     | D[2]                        | 0                                   | Do not bypass PGA in Voltage Channel<br>Default 0 |
|             |   |           |     |                             | 1                                   | Bypass PGA in Voltage Channel                     |
|             |   |           |     | D[1]                        | 0                                   | Disable Current Channel Chopper                   |
|             |   |           |     |                             | 1                                   | Enable Current Channel Chopper                    |
|             |   |           |     | D[0]                        | 0                                   | Disable Voltage Channel Chopper                   |
|             |   |           |     |                             | 1                                   | Enable Voltage Channel Chopper                    |
| 16          | PD_CTL_REG_3<br>(Power Down Control Register) | 1111_1000 |     | D[7]                        | 0                                   | Disable Common Mode Reference                     |
|             |   |           |     |                             | 1                                   | Enable Common Mode Reference                      |
|             |   |           |     | D[6]                        | 0                                   | Disable Internal Current Source                   |
|             |   |           |     |                             | 1                                   | Enable Internal Current Source                    |
|             |   |           |     | D[5]                        | 0                                   | Disable Internal temperature sensor               |
|             |   |           |     |                             | 1                                   | Enable Internal temperature sensor                |
|             |   |           |     | D[4]                        | Reserved. (Default 1) Do not change |   |
|             |   |           |     | D[3]                        | Reserved. (Default 1) Do not change |   |
|             |   |           |     | D[2]                        | 0                                   | Data Output in binary numbering system            |
|             |   |           |     |                             | 1                                   | Data Output in 2's complement numbering system    |
|             |   |           |     | D[1]                        | Reserved. (Default 0) Do not change |   |
|             |   |           |     | D[0]                        | Reserved                            |   |

Table 33. Control Registers

| Addr in HEX | Register Name                                      | POR Value | R/W | 8-bit Control / Status Data |   |
|-------------|--|-----------|-----|-----------------------------|---|
| 17          | ACH_CTL_REG<br>(Analog Channel Selection Register) | 0000_0000 | R/W | D[7:6]                      | These bits specify the selection of voltage/temperature in Voltage Channel<br>Default is 00 (Voltage Channel)   |
|             |  |           |     |                             | 00 Voltage Channel  |
|             |  |           |     |                             | 01 External Temperature Channel ETR   |
|             |  |           |     |                             | 10 External Temperature Channel ETS   |
|             |  |           |     |                             | 11 Internal Temperature Channel   |
|             |  |           |     | D[5]                        | Reserved. (Default 0) Do not change   |
|             |  |           |     | D[4]                        | Internal current source switch enable. Default is 0<br><b>Note:</b> D4 bit is used for Enabling current source to the channel selected by bits D[7,6] of this register. |
|             |  |           |     |                             | 0 Disabled  |
|             |  |           |     |                             | 1 Enabled   |
|             |  |           |     | D[3]                        | Enable/disable Internal current source to RSHH pin of Current channel   |
|             |  |           |     |                             | 0 Disabled  |
|             |  |           |     |                             | 1 Enabled   |
|             |  |           |     | D[2]                        | Enable/disable current source switch to RSHL pin of Current channel   |
|             |  |           |     |                             | 0 Disabled  |
|             |  |           |     |                             | 1 Enabled   |
|             |  |           |     | D[1:0]                      | Reserved  |
| 18          | ISC_CTL_REG<br>(Current Source Setting Register)   | 0000_0000 | R/W | D[7:3]                      | These three bits specify the selection of magnitude of current from the Internal current source. Default is 00000 (0μA).  |
|             |  |           |     |                             | 00000 0μA   |
|             |  |           |     |                             | 00001 8.5μA   |
|             |  |           |     |                             | 00010 17μA  |
|             |  |           |     |                             | 00100 34.5μA  |
|             |  |           |     |                             | 01000 68μA  |
|             |  |           |     |                             | 10000 135μA   |
|             |  |           |     |                             | 11111 270μA   |
|             |  |           |     | D[2:0]                      | Reserved  |
| 19          | OTP_EN_REG   | 0000_0000 | R/W | D[7]                        | 1 Reserved (default = 1) Do not change  |
|             |  |           |     | D[6:0]                      | Reserved  |
| 44          | STATUS_REG_2                                       | 0000_0000 | R   | D[7]                        | Status indicating data saturation in Current channel  |
|             |  |           |     | D[6]                        | Status indicating data saturation in Voltage channel  |
|             |  |           |     | D[5:0]                      | Reserved  |

Table 33. Control Registers

| Addr in HEX   | Register Name | POR Value | R/W | 8-bit Control / Status Data |   |                           |
|---|---------------|-----------|-----|-----------------------------|---|---------------------------|
| Digital Signal path control registers for Voltage Channel |               |           |     |                             |   |                           |
| 45  | DEC_REG_R1_V  | 0100_0101 | R/W | D[7]                        | Selection of Decimation ratio for Voltage/Temperature channel.<br>Default is 0 (Down Sampling Rate is 64) |                           |
|   |               |           |     |                             | 0   | Down Sampling Rate is 64  |
|   |               |           |     |                             | 1   | Down Sampling Rate is 128 |
|   |               |           |     | D[6:5]                      | Division of oversampling clock, which is used as Chopper Clock. Default is 10 (divide by 512)             |                           |
|   |               |           |     |                             | 00  | Chopper Clock Always High |
|   |               |           |     |                             | 01  | Divide by 256             |
|   |               |           |     |                             | 10  | Divide by 512             |
|   |               |           |     |                             | 11  | Divide by 1024            |
|   |               |           |     | D[4:1]                      | Decimation ratio of CIC2. Default is 0010 (4)   |                           |
|   |               |           |     |                             | 0000  | 1                         |
|   |               |           |     |                             | 0001  | 2                         |
|   |               |           |     |                             | 0010  | 4                         |
|   |               |           |     |                             | 0011  | 8                         |
|   |               |           |     |                             | 0100  | 16                        |
|   |               |           |     |                             | 0101  | 32                        |
|   |               |           |     |                             | 0110  | 64                        |
|   |               |           |     |                             | 0111  | 128                       |
|   |               |           |     |                             | 1000  | 256                       |
|   |               |           |     |                             | 1001  | 512                       |
|   |               |           |     |                             | 1010  | 1024                      |
|   |               |           |     |                             | 1011  | 2048                      |
|   |               |           |     |                             | 1100  | 4096                      |
|   |               |           |     |                             | 1101  | 8192                      |
|   |               |           |     |                             | 1110  | 16384                     |
|   |               |           |     |                             | 1111  | 32768                     |
|   |               |           |     | D[0]                        | CIC1 Saturation Interrupt Mask Control.<br>Default is 1   |                           |
|   |               |           |     |                             | 0   | Unmasked                  |
|   |               |           |     |                             | 1   | Masked                    |

Table 33. Control Registers

| Addr in HEX | Register Name | POR Value | R/W | 8-bit Control / Status Data |  |                     |
|-------------|---------------|-----------|-----|-----------------------------|--|---------------------|
| 46          | DEC_REG_R2_V  | 0000_0100 | R/W | D[7:5]                      | Reserved   |                     |
|             |               |           |     | D[4]                        | Interrupt Mask Control for Voltage channel data Ready<br>Interrupt on INT pin (Default is 0)                               |                     |
|             |               |           |     |                             | 0  | Unmasked            |
|             |               |           |     |                             | 1  | Masked              |
|             |               |           |     | D[3:2]                      | These two bits select the source of output 16-bit data in<br>Normal mode from Voltage channel. Default is 01               |                     |
|             |               |           |     |                             | 00   | FIR / MA Output     |
|             |               |           |     |                             | 01   | CIC2 Output         |
|             |               |           |     |                             | 10   | Dechop/Demod Output |
|             |               |           |     |                             | 11   | CIC Output          |
|             |               |           |     | D[1:0]                      | Reserved   |                     |
| 47          | FIR_CTL_REG_V | 0000_0000 | R/W | D[7]                        | This bit selects FIR / MA Filter in Voltage channel.<br>Default is 0 (FIR)   |                     |
|             |               |           |     |                             | 0  | FIR                 |
|             |               |           |     |                             | 1  | MA Filter           |
|             |               |           |     | D[6:3]                      | These bits select the number of data samples for<br>averaging in MA filter in Voltage channel.<br>Default is 0000 (bypass) |                     |
|             |               |           |     |                             | 0000   | bypass              |
|             |               |           |     |                             | 0001   | 1                   |
|             |               |           |     |                             | 0011   | 3                   |
|             |               |           |     |                             | 0111   | 7                   |
|             |               |           |     |                             | 1111   | 15                  |
|             |               |           |     | D[2:0]                      | Reserved   |                     |

**Note:** All the registers from address 0x19 to 0x2C are read-only.

### 7.9.1 Standby Mode - Power Consumption

In Standby Mode 1 there is a timer based accurate measurement every  $T_a$  seconds. The device itself stays in idle-mode as long as it does not get a different command from the SPI interface. Internal oscillator frequency is typically  $f_{oscint}=262$  kHz to reduce power consumption as long as the timer runs. After every time out of  $T_a$  secs, it performs accurate measurement of current, voltage/ temperature. Data ready is signaled to microcontroller through an interrupt signal on INT and goes into STOP state.

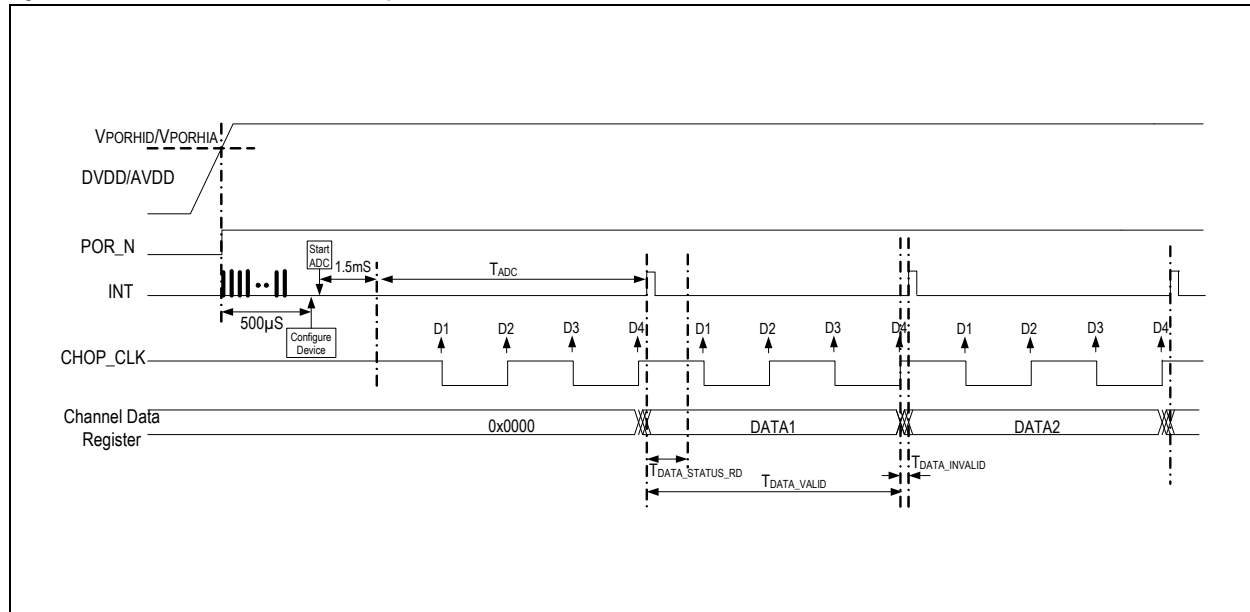
In the SBM the following equations hold:

- $T_{sbm1} = T_a = 10s$  (default value is 10secs); the power consumption is valid for this setting. This is the period of the repetition rate in SBM 1 and SBM2.
- $T_{sett} \approx 2ms$  (depending on external capacitors). This is the time required by the analog part to settle when the new measuring period is started. Any measurements performed during  $T_{sett}$  produce invalid results.
- $T_1 = 3ms$  (by default setting, every third measurement is sent to microcontroller in the SBM mode 1) is the time needed to perform the first measurement.
- $T_{meas} = T_{sett} + T_1$  is the total active time needed to get a valid result.
- $DR_{SBM} = T_{meas}/T_{sbm} \approx 5ms/10s$ . This is the ratio of repetition time versus the active time (Device in NOM mode).

Power consumption =  $(DR_{SBM} \cdot \text{NOM mode power consumption}) + ((10s-5ms)/10s) \cdot \text{Stop mode power consumption}$

## 7.9.2 Initialization Sequence at Power ON

Figure 16. AS8510 Device Initialization Sequence at Power ON



Device initialization starts if the DVDD and AVDD supplies are switched ON and DVDD > VPORHID. The duration period of Initialization is 500µsec, and, during this period, INT pin toggles at the rate of internal low power oscillator. Toggling on INT during the period of initialization should be ignored in the system. Device configuration and activation should be carried out only after the initialization period.

On ADC start, device enters into analog stabilization state and takes 1.5msec for oscillator and Reference to settle. After this 1.5msec period, the first interrupt will occur after a time period of T<sub>ADC</sub>.

T<sub>DATA\_STATUS\_RD</sub> is the time period during which the micro-controller should complete reading of data and status from the device. If reading is carried out beyond this time period, then, ADC performance will degrade for next sample generation. Status register gets cleared automatically only when micro-controller reads this register. Data in the channel registers is changed after T<sub>DATA\_VALID</sub> duration. Ensure that data channel registers and status registers are not read during the T<sub>DATA\_INVALID</sub> duration.

### Example:

Configuration registers are set as follows:

CLK\_REG = 8'b0010\_0000

DEC\_REG\_R1\_I = 0100\_0101

DEC\_REG\_R2\_I = 1100\_0101

FIR\_CTL\_REG\_I = 0000\_0100

ADC is configured to a data rate of 1KHz, CHOP\_CLK to 2KHz, and Modulator clock to 1MHz, Decimation ratio of CIC1 = 64, and Decimation ratio of CIC2 = 4. With these settings the various time periods as shown in the Figure 16 are as follows:

T<sub>DATA\_STATUS\_RD</sub> = 100 µsec

$(T_{DATA\_STATUS\_RD} = (1/mod\_clk) * R1 * [((mod\_clk/(2*chop\_clk))*(1/R1)) - 2.5])$

T<sub>DATA\_INVALID</sub> = 8 µsec

T<sub>ADC</sub> = 1msec

T<sub>DATA\_VALID</sub> = T<sub>ADC</sub> - T<sub>DATA\_INVALID</sub> = 1msec - 8 µsec

CHOP\_CLK and POR\_N are internal signals of the device.

Table 34 provides valid combinations of Modulator clock, Chopper clock and Decimation R1 and the corresponding values of TDATA\_STATUS\_RD and TADC.

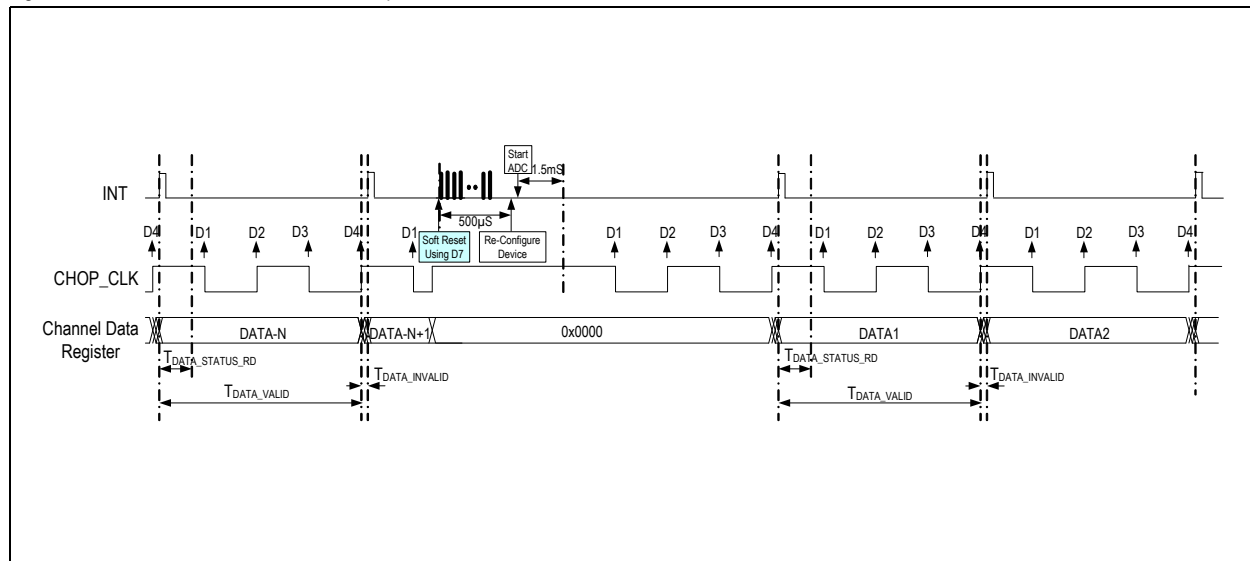
Table 34. Valid Combinations of Modulator Clock, Chopper Clock and Decimation Ratio R1

| Modulator Clock | Chopper Frequency<br>CHOP_CLK | Decimation Ratio R1 | TDATA_STATUS_RD                                    | TADC<br>R2/(2*CHOP_CLK)<br>for R2=4 |
|-----------------|-------------------------------|---------------------|--|-------------------------------------|
| 1MHz            | 2KHz                          | 64                  | $1\text{usec} * 64 * [4 - 2.5] = 96\text{usec}$    | 1mSec                               |
| 2MHz            | 2KHz                          | 64                  | $0.5\text{usec} * 64 * [8 - 2.5] = 176\text{usec}$ | 1mSec                               |
| 2MHz            | 2KHz                          | 128                 | $0.5\text{usec} * 128 * [4 - 2.5] = 96\text{usec}$ | 1mSec                               |
| 2MHz            | 4KHz                          | 64                  | $0.5\text{usec} * 64 * [4 - 2.5] = 48\text{usec}$  | 0.5mSec                             |

### 7.9.3 Soft-reset Using Bit D[7] of Reset Register 0x09

It is possible to soft-reset the device by writing "0" into D[7] bit of Reset Register at 0x09. On applying soft-reset, the device enters into initialization state and D[7] bit changes back to "1". The duration period of Initialization is 500 $\mu$ sec, and, during this period, INT pin toggles at the rate of internal low power oscillator. Toggling on INT during the period of initialization should be ignored in the system. Device configuration and activation should be carried out only after the initialization period. See Figure 17 for the timing details of the sequence of device initialization on soft-reset.

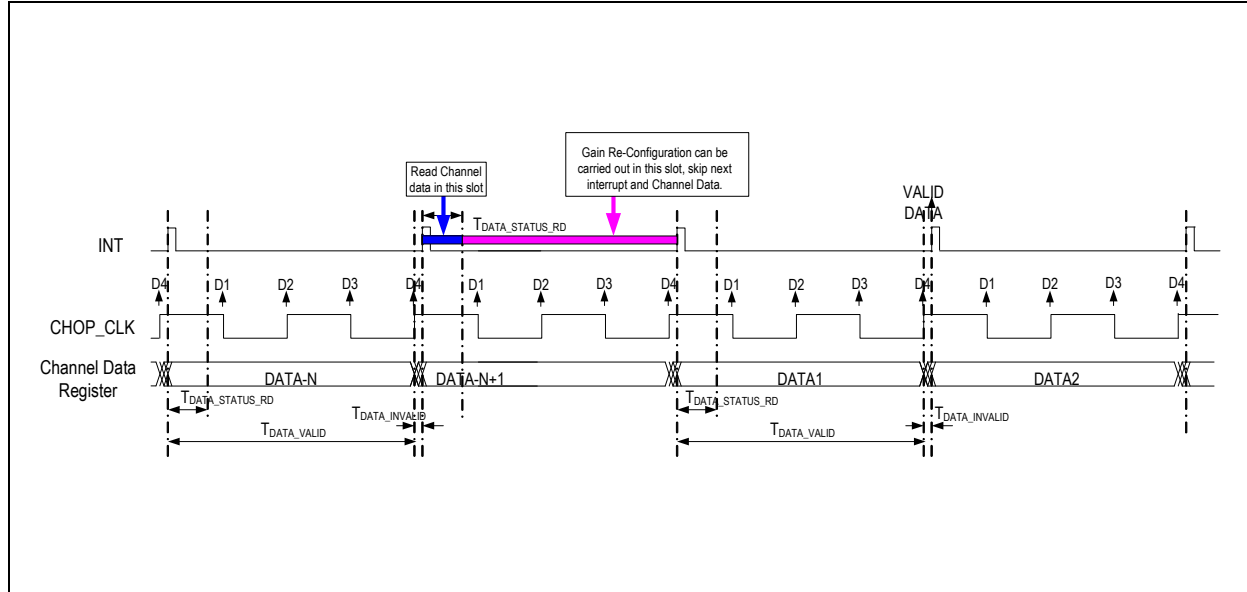
Figure 17. AS8510 Device Initialization Sequence at Soft-reset



#### 7.9.4 Reconfiguring Gain Setting of PGA

Only PGA gain settings can be changed dynamically while ADC conversions are in progress. When PGA gain settings are changed, the first sample from the ADC is invalid. Ignore the first interrupt after the gain re-configuration. Valid data starts from the second interrupt onwards.

Figure 18. AS8510 - Reconfiguration of Gain Setting of PGA



#### 7.9.5 Configuring the Device During Normal Mode

Following registers can be programmed dynamically when the device is in operational mode (Normal mode).

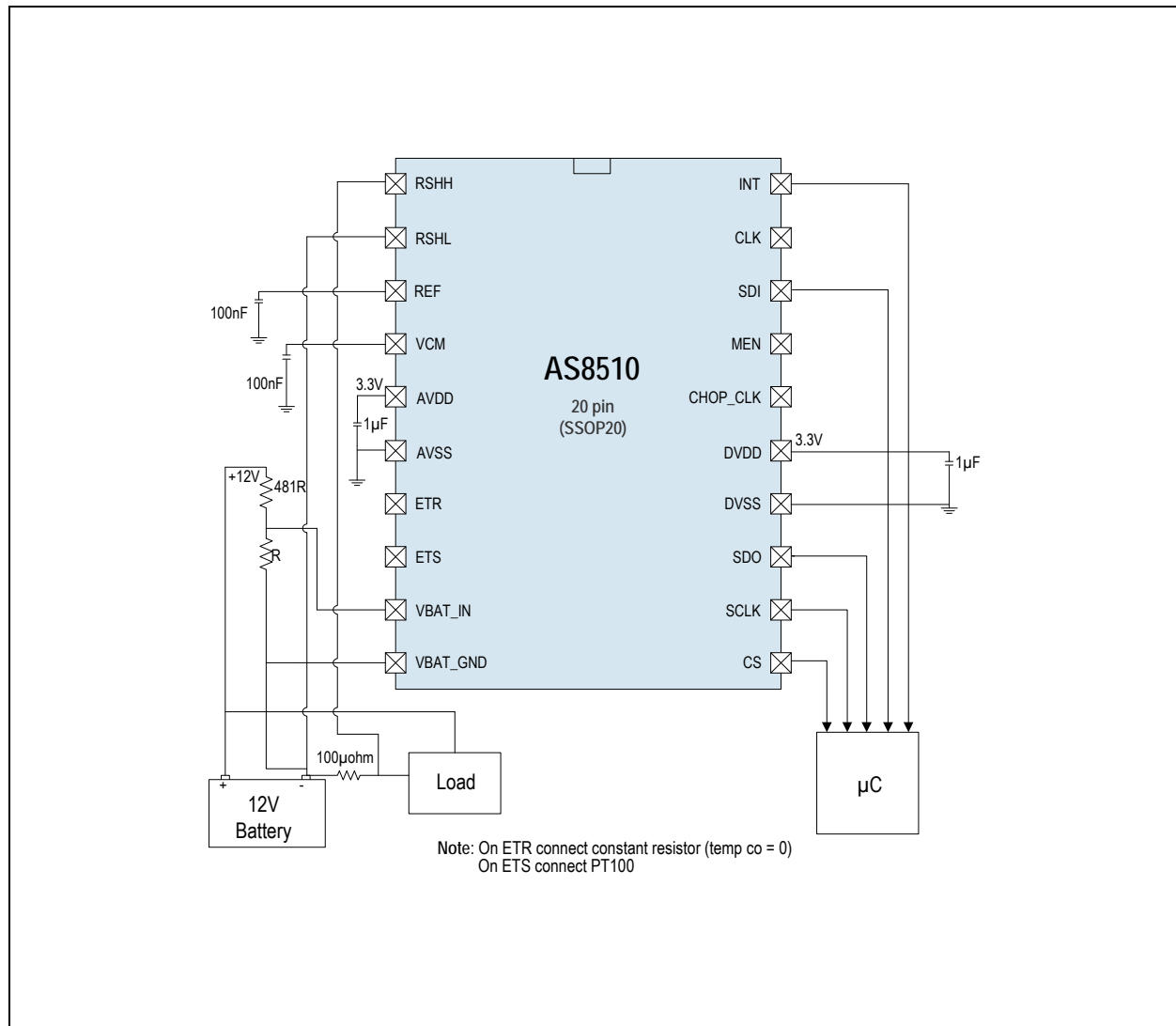
- ACH\_CTL\_REG address is 0x17
- PGA\_CTL\_REG address is 0x03

During the operation (Normal mode) of the device, if any of the registers need to be programmed or changed other than the above mentioned registers, then it is required to STOP the device by writing into MOD\_CTL\_REG "STOP" bit and configure the device as per the requirements and start the device.



## 7.10 Low Side Current Measurement Application

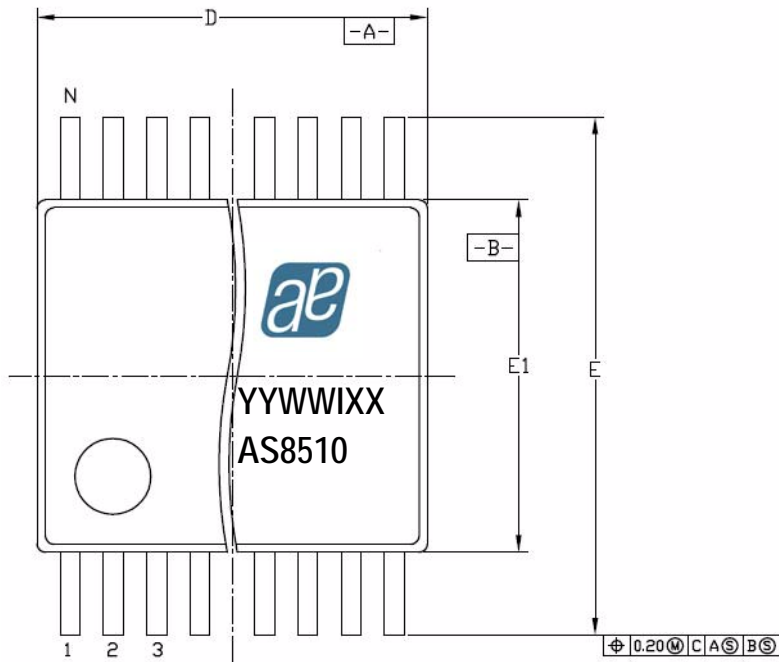
Figure 19. Application Diagram



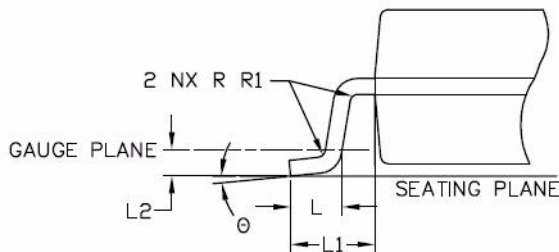
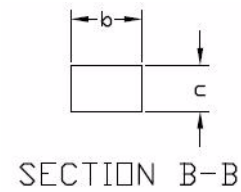
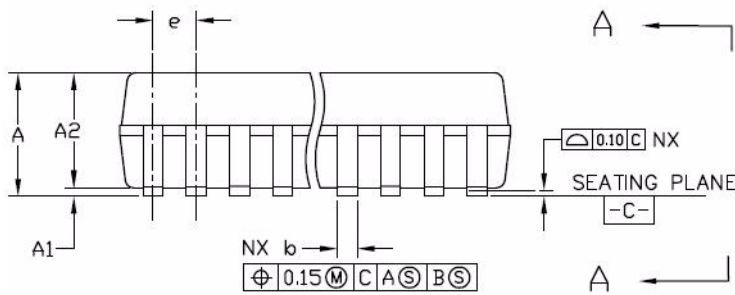
## 8 Package Drawings and Markings

The product is available in a 20-pin SSOP package.

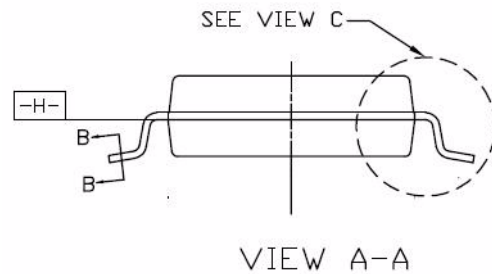
Figure 20. Drawings and Dimensions



| Symbol | Min  | Nom      | Max  |
|--------|------|----------|------|
| A      | -    | -        | 2.00 |
| A1     | 0.05 | -        | -    |
| A2     | 1.65 | 1.75     | 1.85 |
| b      | 0.22 | -        | 0.38 |
| c      | 0.09 | -        | 0.25 |
| D      | 6.90 | 7.20     | 7.50 |
| E      | 7.40 | 7.80     | 8.20 |
| E1     | 5.00 | 5.30     | 5.60 |
| e      | -    | 0.65 BSC | -    |
| L      | 0.55 | 0.75     | 0.95 |
| L1     | -    | 1.25 REF | -    |
| L2     | -    | 0.25 BSC | -    |
| R      | 0.09 | -        | -    |
| θ      | 0°   | 4°       | 8°   |
| N      | 20   |          |      |



VIEW C



**Notes:**

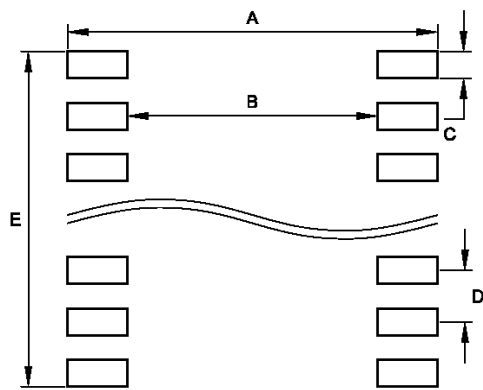
1. Dimensions & tolerancing conform to *ASME Y14.5M-1994*.
2. All dimensions are in millimeters. Angles are in degrees.

**Marking:** YYWWIXX.

| YY                                  | WW                 | I                         | XX                         |
|-------------------------------------|--------------------|---------------------------|----------------------------|
| Last two digits of the current year | Manufacturing week | Assembly plant identifier | Assembly traceability code |

## 8.1 Recommended PCB Footprint

Figure 21. PCB Footprint



| Recommended Footprint Data |      |
|----------------------------|------|
| Symbol                     | mm   |
| A                          | 9.02 |
| B                          | 6.16 |
| C                          | 0.46 |
| D                          | 0.65 |
| E                          | 6.31 |

## Revision History

| Revision | Date          | Owner     | Description   |
|----------|---------------|-----------|---|
| 1.1      | Jun 22, 2009  | mbr       | Initial version   |
| 1.2      | Dec 02, 2009  | ss2, rad  | Updated the datasheet according to 1.8 specification  |
|          | Dec 08, 2009  | ss2       | Following modifications carried out in <a href="#">Table 27</a> :<br>1) Deleted Max value for parameter 'Temperature upper limit'<br>2) Added Footnote 2<br>3) Added new parameter 'Temperature Sensor Output (without gain calibration)'   |
| 1.3      | Feb 19, 2010  | mbr       | Updated <a href="#">Table 15</a> with PGA information   |
|          |               |           | Updated Voltage Measurement   |
|          |               |           | Updated VREF and VIN values in <a href="#">Table 17</a> and VREF in <a href="#">Table 18</a>  |
|          |               |           | Inserted new <a href="#">Table 28</a> - System Measurement Error Budget   |
| 2.0      | June 01, 2010 | mbr       | Changed the pin name AGND to VCM  |
|          |               |           | Current source added in the block diagram   |
|          |               |           | Added application diagram   |
|          |               |           | Updated <a href="#">Electrical Characteristics on page 7</a>  |
|          |               |           | Updated <a href="#">Detailed System and Block Specifications on page 9</a>  |
|          |               |           | Updated <a href="#">Standby Mode - Power Consumption on page 37</a>   |
| 3.0      | Oct 29, 2010  | ss2       | Updates carried out across the datasheet  |
| 3.1      | Nov 02, 2010  | ss2       | Updated Ref Voltage Offset in <a href="#">Table 18</a>  |
| 3.2      | Nov 14, 2010  | ss2       | Added sections 7.9.2, 7.9.3, 7.9.4  |
| 3.3      | Nov 26, 2010  | vel       | Formatted figures 17, 18 in portrait mode. Index modified from page 39  |
|          | Dec 03, 2010  | ss2       | Added <a href="#">Configuring the Device During Normal Mode on page 40</a>  |
| 3.4      | Mar 01, 2011  | mbr / ss2 | Updated <a href="#">General Description</a> , <a href="#">Key Features</a> , <a href="#">Applications</a> , <a href="#">Pin Descriptions</a> , <a href="#">Current Measurement Ranges</a> , <a href="#">Differential Input Amplifier for Current Channel</a> , <a href="#">Differential Input Amplifier for Voltage Channel</a> , <a href="#">Sigma Delta Analog to Digital Converter</a> , <a href="#">Bandgap Reference Voltage</a> , <a href="#">System Measurement Error Budget for Gains 5 and 25</a> , <a href="#">Package Drawings and Markings</a> . Deleted Voltage Measurement. |

**Note:** Typos may not be explicitly mentioned under revision history.

## 9 Ordering Information

The devices are available as the standard products shown in [Table 35](#).

*Table 35. Ordering Information*

| Ordering Code | Description                                 | Delivery Form | Package     |
|---------------|---|---------------|-------------|
| AS8510-ASST   | Data Acquisition Device for Battery Sensors | Tape and Reel | 20-pin SSOP |

**Note:** All products are RoHS compliant and Pb-free.

Buy our products or get free samples online at ICdirect: <http://www.austriamicrosystems.com/ICdirect>

Technical Support is available at <http://www.austriamicrosystems.com/Technical-Support>

For further information and requests, please contact us [mailto: sales@austriamicrosystems.com](mailto:sales@austriamicrosystems.com)  
or find your local distributor at <http://www.austriamicrosystems.com/distributor>

## Copyrights

Copyright © 1997-2011, austriamicrosystems AG, Tobelbaderstrasse 30, 8141 Unterpremstaetten, Austria-Europe. Trademarks Registered ®. All rights reserved. The material herein may not be reproduced, adapted, merged, translated, stored, or used without the prior written consent of the copyright owner.

All products and companies mentioned are trademarks or registered trademarks of their respective companies.

## Disclaimer

Devices sold by austriamicrosystems AG are covered by the warranty and patent indemnification provisions appearing in its Term of Sale. austriamicrosystems AG makes no warranty, express, statutory, implied, or by description regarding the information set forth herein or regarding the freedom of the described devices from patent infringement. austriamicrosystems AG reserves the right to change specifications and prices at any time and without notice. Therefore, prior to designing this product into a system, it is necessary to check with austriamicrosystems AG for current information. This product is intended for use in normal commercial applications. Applications requiring extended temperature range, unusual environmental requirements, or high reliability applications, such as military, medical life-support or life-sustaining equipment are specifically not recommended without additional processing by austriamicrosystems AG for each application. For shipments of less than 100 parts the manufacturing flow might show deviations from the standard production flow, such as test flow or test location.

The information furnished here by austriamicrosystems AG is believed to be correct and accurate. However, austriamicrosystems AG shall not be liable to recipient or any third party for any damages, including but not limited to personal injury, property damage, loss of profits, loss of use, interruption of business or indirect, special, incidental or consequential damages, of any kind, in connection with or arising out of the furnishing, performance or use of the technical data herein. No obligation or liability to recipient or any third party shall arise or flow out of austriamicrosystems AG rendering of technical or other services.



## Contact Information

### Headquarters

austriamicrosystems AG  
Tobelbaderstrasse 30  
A-8141 Unterpremstaetten, Austria

Tel: +43 (0) 3136 500 0  
Fax: +43 (0) 3136 525 01

For Sales Offices, Distributors and Representatives, please visit:

<http://www.austriamicrosystems.com/contact>