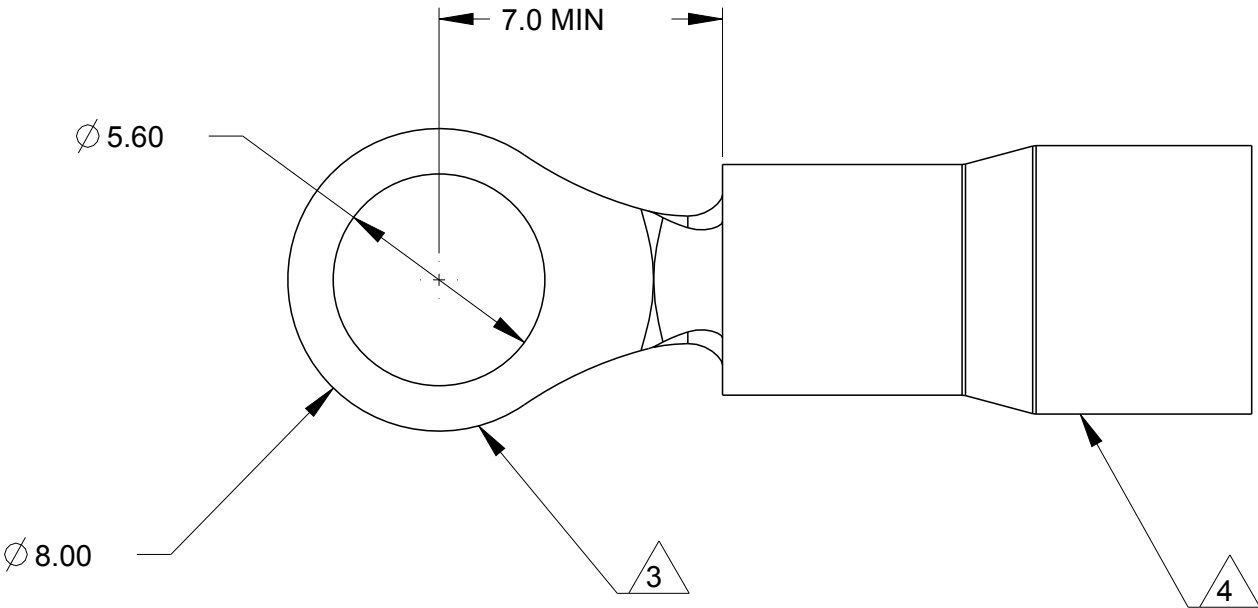


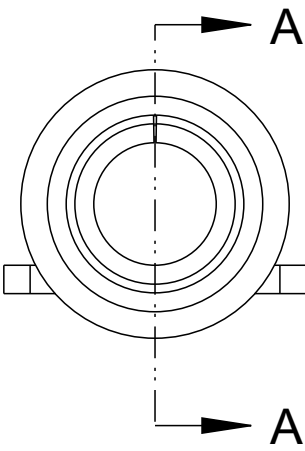
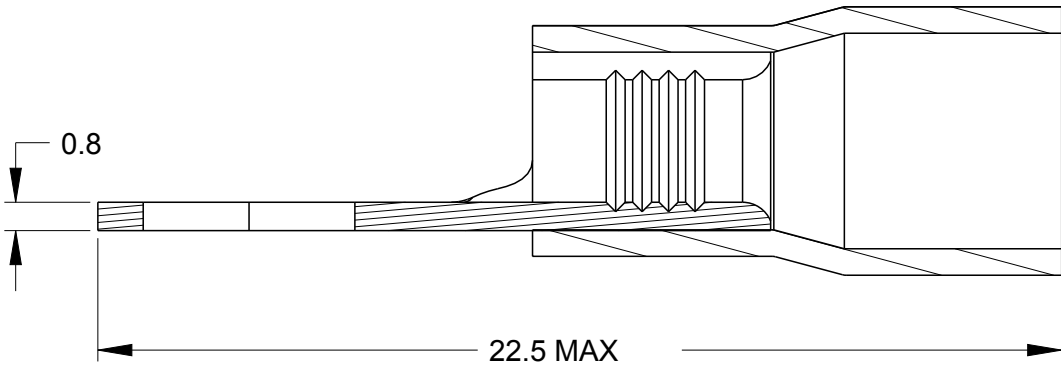
2		1				
LOC	DIST	REVISIONS				
B	E	P	LTR	DESCRIPTION	DATE	APVD
			A	FIRST ISSUE	06-Sep-10	MJG



1. WIRE SIZE 22 - 16 AWG
2. WIRE INSULATION 3.6 DIA MAX
- 3

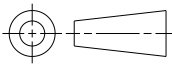
BODY: MATERIAL, COPPER  
FINISH, ELECTRO TIN PLATE
- 4

SLEEVE: MATERIAL PVC



SECTION **A-A**  
SCALE 5:1

TAPE MOUNTED & REEL	5000	344382-2
PLASTIC BAG	100	344282-1
PACKAGING	QTY	PART NO

THIS DRAWING IS A CONTROLLED DOCUMENT FOR TYCO ELECTRONICS CORPORATION IT IS SUBJECT TO CHANGE AND THE CONTROLLING ENGINEERING ORGANIZATION SHOULD BE CONTACTED FOR THE LATEST REVISION.			DWN M.GREENER 06SEP2010		<div><div><div></div><div>Tyco Electronics</div></div><div>Tyco Electronics UK Ltd. Bideford, North Devon, EX39 4HE</div></div>						
			CHK J.AMBROSE 06SEP2010								
DIMENSIONS:  mm			TOLERANCES UNLESS OTHERWISE SPECIFIED:  0 PLC ± 0.5 1 PLC ± 0.5 2 PLC ± 0.5 3 PLC ± 0.5 4 PLC ± 0.5 ANGLES ± 0.5		APVD J.AMBROSE 06SEP2010		NAME				
					PRODUCT SPEC  -		TERMINAL RING TONGUE PLASTIGRIP				
			APPLICATION SPEC  -		SIZE				CAGE CODE	DRAWING NO	RESTRICTED TO
MATERIAL  SEE NOTES			FINISH  -		WEIGHT  -		A300779		C-344382		-
CUSTOMER DRAWING							SCALE NTS		SHEET 1 OF 1		REV A