

4

3

2

1

THIS DRAWING IS UNPUBLISHED.

RELEASED FOR PUBLICATION

© COPYRIGHT

ALL RIGHTS RESERVED.

LOC

DIST


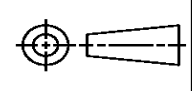
REVISIONS

P	LTR	DESCRIPTION	DATE	DWN	APVD
	A1	ECR-14-007044	21MAY2014	GK	HMR


REPLACED BY OCEAN STYLE APPLICATOR PART  
NUMBER 2150429-1

FOR REPLACEMENT PARTS FOR APPLICATOR 1339799  
REFER TO ADDITIONAL PAGE(S). SPARE PARTS KIT (IF LISTED)  
WILL REMAIN AVAILABLE.

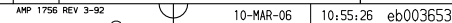
THE REPLACEMENT OCEAN STYLE APPLICATOR HAS THE  
SAME TERMINATOR/PRESS INTERFACE AS APPLICATOR  
1339799

THIS DRAWING IS A CONTROLLED DOCUMENT.		DWN	GOPALAKRISHNA HV		 TE Connectivity	
		CHK	RAGHAVENDRA			
DIMENSIONS:		TOLERANCES UNLESS OTHERWISE SPECIFIED:		APVD	RAGHAVENDRA	
		0 PLC ±		NAME END FEED HD-I APPLICATOR		
		1 PLC ±				
		2 PLC ±				
		3 PLC ±				
4 PLC ±		4 PLC ±		SIZE A3		
ANGLES ±		FINISH				
MATERIAL				RESTRICTED TO		
				SCALE		
				REV A1		

					73
-	1	1	1339799	PRINT, APPLICATOR LOG SHEET	72
-	1	1	1338705-2	DOCUMENTATION PACKAGE	71
					70
					69
					68
-	1	1	461264-1	PLATE, IDENTIFICATION	67
-	2	2	21017-2	SCR,DRIVE (#2X.19) ID PLATE	66
					65
-	1	1	986950-1	WASHER, FLAT PRECISION	64
-	1	1	3-18031-0	SCR,SKT SET (M6X6) RAM	63
-	1	1	18023-9	SCR,SKT CAP (M4X6) CP DSC	62
					61
-	1	1	18024-7	SCR,BHC (M4X10) ANVIL	60
					59
-	2	2	1-18023-3	SCR,SHC (M4X16) HOLD DOWN	58
-	5	5	1-18023-0	SCR,SHC (M4X8) STRIP GUIDE	57
-	2	2	9-18023-6	SCR,SHC (M4X14) SLUG BLADE	56
					55
-	2	2	18029-1	NUT, HEX (M3) DRAG	54
-	2	2	986965-1	NUT, HEX SL (M4) DRAG STUD	53
-	2	2	2-18032-2	SCR,SKT SET (M3X10) DRAG	52
					51
					50
-	1	1	18024-3	SCR,BHC (M3X10) CAM	49
					48
-	1	1	1338676-1	CAM, POST-FEED 30 & 40 mm ST	47
-	1	1	1338662-1	APPLICATOR, BASIC (SUBASSY)	46
-	1	1	690191-1	PLUG, NYLON	45
-	1	1	1320998-1	RAM	44
-	1	1	690125-1	WASHER, LAMINATED	43
-	1	1	690124-1	WASHER, RAM	42
-	1	1	2-18024-6	SCREW,BHC (M8X25) CRIMPER	41
-	1	1	23241-1	BALL, STEEL	40
-	1	1	2-22278-7	SPRING, COMPRESSION	39
-	1	1	1-1320922-0	DISC, INSULATION	38
-	1	1	354777-1	WIRE DISC, PLASTIC	37
-	1	1	22480-5	WASHER, SPRING	36
-	1	1	690212-1	POST, RAM	35
					34
					33
-	9	9	18025-2	WASHER, LOCK (M4) SHEAR BL	32
-	2	2	1-18024-0	SCR,BHC (M4X20) SHEAR PL	31
					30
-	2	2	18024-8	SCR,BHC (M4X12) STRIPPER	29
-	1	1	3-690451-2	SPACER, STRIPPER	28
-	1	1	240639-1	STRIPPER	27
					26
-	2	2	1320906-1	DRAG, STUD	25
-	1	1	1320995-3	PLATE, STRIP GUIDE	24
-	1	1	240825-1	PLATE, STRIP HOLD DOWN	23
-	2	2	4-22281-1	SPRING, DRAG	22
					21
-	1	1	1338665-1	DRAG, STOCK	20
					19
-	2	2	1338663-4	GUIDE, LOWER STRIP	18
-	4	4	1-18024-8	SCR,BHC (M6X12) STRIP GD PL	17
-	1	1	1338708-1	SPACER, SLUG BLADE	16
					15
					14
-	1	1	690481-2	SPACER, HOLD DOWN	13
-	1	1	23846-1	SPRING, HOLD DOWN	12
-	1	1	240833-2	PLATE, REAR SHEAR	11
					10
-	1	1	690482-4	PLATE, FRONT SHEAR	9
1	2	1	2-1333216-8	ANVIL	8
-	1	1	690474-4	BLADE, SLUG	7
-	1	1	2-455892-1	HOLD DOWN, TERMINAL	6
-	1	1	2-240641-0	SPACER, SLUG BLADE	5
-	1	1	238009-1	SPACER, BLOCK CRIMPER	4
1	2	1	1-456134-5	CRIMPER, INSULATION	3
-	1	1	455888-8	SPACER, CRIMPER	2
1	2	1	1-456405-3	CRIMPER, WIRE	1



1. RECOMMENDED SPARE PARTS.
2. GREASE RAM, CAM, CAM FOLLOWER AND FEED ROD LIGHTLY.
3. LUBRICATE DAILY PER THE APPLICATOR INSTRUCTION SHEET SUPPLIED WITH THE APPLICATOR.
4. CERTAIN TERMINALS REQUIRE LUBRICATION. REFER TO THE APPLICATOR INSTRUCTION SHEET FOR MORE INFORMATION.
5. ALL CRIMP DATA CALCULATED BY TYCO ELECTRONICS UK LTD.
6. CUT TO LENGTH AT ASSEMBLY.
7. INSULATION RANGE SHOWN IS THAT OF THE APPLICATOR AND NOT THAT OF THE TERMINAL.



CAGE CODE 00779	CUSTOMER AND ASSEMBLY DRAWING
--------------------	-------------------------------