

Product Data Sheet



143X561

Replace "X" with 1, 2 or 3 for number of poles

Power Stud Block

230 Amps, 600 Volts (AC/DC)



Wire Range:

Line side: (1) 3/8 – 16 X 1 3/8" Stud

Load Side: (1) 1/4 – 20 X 1 3/8" Stud

Electrical Ratings:

- 230A Copper wire,
- 600 Volts AC/DC (UL 1059 Class C, User Group - General Industrial)

Mechanical Ratings:

- Maximum insulator base temperature: 150°C (302°F) UL RTI
- Storage and transportation temperature range: -35°C to 125°C (-31°F to 257°F)
- Flammability rating of insulator base: UL 94 V-0
- * Use outside these ratings needs to be judged in the end-use application

Materials:

- Connector: High conductivity aluminum, tin plated
- Insulator base: phenolic
- Threaded Studs: Brass, tin plated
- Connector mounting screws: Steel, zinc plated
- Nuts: Brass, nickel plated (supplied loose – one 3/8 nut and one 1/4 nut per line)

Agency Approvals:

- UL Recognized, UL 1059 Terminal Block Standard, File No. XCFR2.E62806
- CSA Certified, CSA C22.2 No. 158, File No. LR19766 (Wire Classes B & C only)
- CE compliant to IEC 60947-7-1
- RoHS Compliant

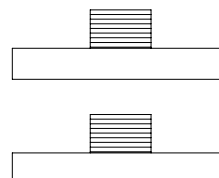
Torque:

Line Side Torque:

3/8 – 16 Stud: 192 in. lbs.

Load Side Torque:

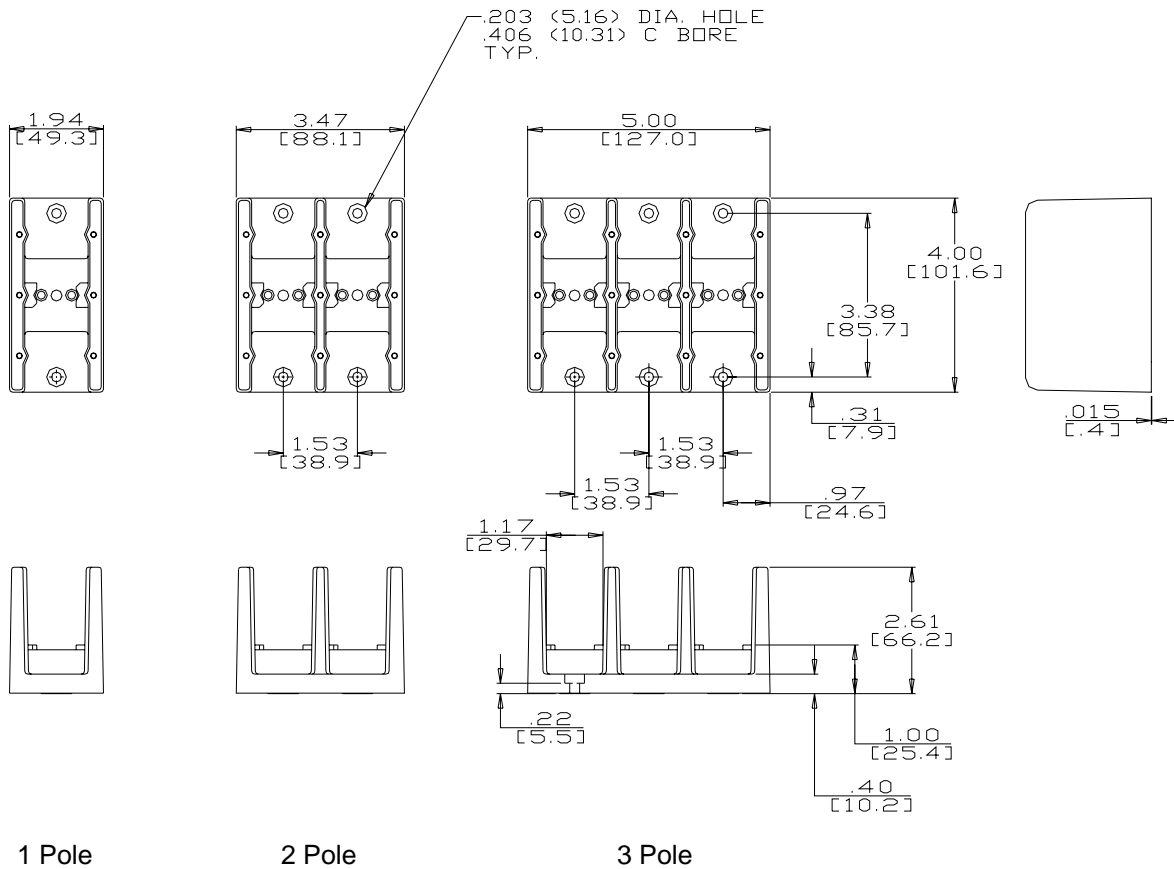
1/4 – 20 Stud: 61 in. lbs.



- Panel mountable: #10 fastener, torque to 25-30 in. lbs.

Accessories:

- Cover: Clear protective plastic cover. Catalog description CC143X ("X" numbers of poles: 1,2 or 3)
- Marking strip: White vinyl strip to mark circuits. Supplied with mounting screws.
- Printing available. Consult factory.



WWW.MARATHONSP.COM
1-419-352-8441

PDS 0330 REV A 10/07/08