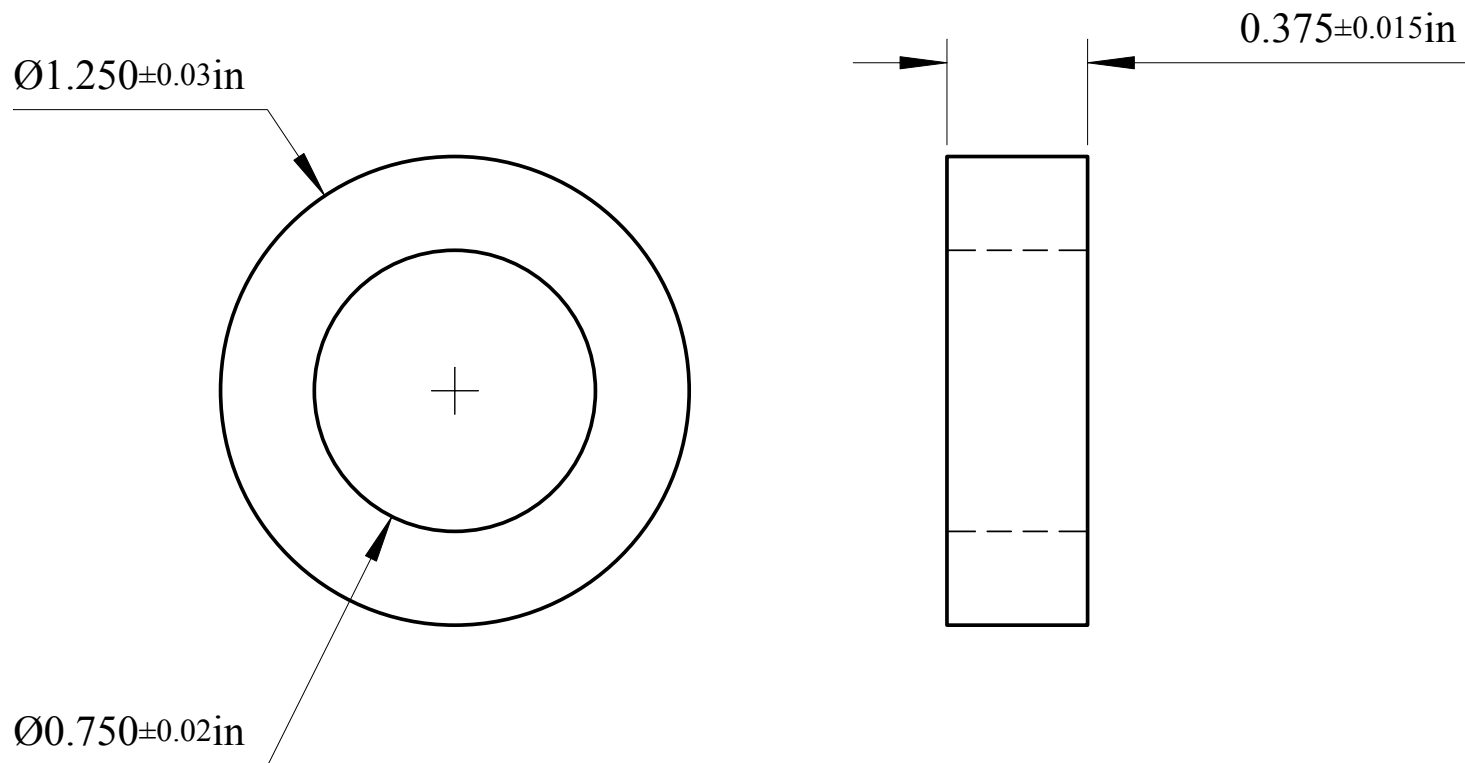


Reference: MKS 11449



NOTES

- 1 MATERIAL: 'M2', Initial Permeability = 40; PHYSICAL: Tumbled Edges; , Color Code: White (one side)
- 2 ELECTRICAL TEST: Instrument = HP4342A @ 13.6 MHz, Fixture = 8 turns (13", #20 wire),
- 2 ELECTRICAL TEST SPECIFICATION: Cap = 70.2 pF max (Ls = 1.95 microHenry min), Q = 350 min.



NATIONAL MAGNETICS GROUP, INC.
1210 Win Drive
Bethlehem, PA 18017 - 7061
Tel: 610 - 867 -7600 Fax: 610 - 867 -0200
Subsidiary: TCI Ceramics

Rev.	Description	Approved	Date	DESCRIPTION: FERRITE TOROID
1	Reference part file	RMZ	07Sep2005	FSCM: 94312 P/N: M2-665C