

# HP12-57W-P3M



3.7 m | 12 ft High Performance Parabolic Shielded Antenna, single-polarized, 5.725–6.425 GHz, CPR137G, gray antenna, enhanced white radome with flash, standard pack—two-piece reflector

## Product Classification

### Product Type

Microwave antenna

## General Specifications

### Antenna Type

HP - High Performance Parabolic Shielded Antenna, single-polarized

### Diameter, nominal

3.7 m | 12 ft

### Packing

Standard pack

### Radome Color

White

### Radome Material

Enhanced

### Reflector Construction

Two-piece reflector

### Antenna Input

CPR137G

### Antenna Color

Gray

### Antenna Type

HP - High Performance Parabolic Shielded Antenna, single-polarized

### Diameter, nominal

3.7 m | 12 ft

### Flash Included

Yes

### Polarization

Single

## Electrical Specifications

### Operating Frequency Band

5.725 – 6.425 GHz

### Beamwidth, Horizontal

1.0 °

### Beamwidth, Vertical

1.0 °

### Boresite Cross Polarization Discrimination (XPD)

30 dB

### Electrical Compliance

ETSI Class 2 | US FCC Part 101A

### Front-to-Back Ratio

70 dB

### Gain, Low Band

44.2 dBi

### Gain, Mid Band

44.6 dBi

### Gain, Top Band

45.0 dBi

### Operating Frequency Band

5.725 – 6.425 GHz

### Radiation Pattern Envelope Reference (RPE)

4277

### Return Loss

30.7 dB

|      |      |
|------|------|
| VSWR | 1.06 |
|------|------|

## Mechanical Specifications

|                               |                        |
|-------------------------------|------------------------|
| Fine Azimuth Adjustment       | $\pm 5^\circ$          |
| Fine Elevation Adjustment     | $\pm 5^\circ$          |
| Mounting Pipe Diameter        | 115 mm   4.5 in        |
| Net Weight                    | 431 kg   950 lb        |
| Side Struts, Included         | 1 inboard   1 outboard |
| Side Struts, Optional         | 2 outboard             |
| Wind Velocity Operational     | 110 km/h   68 mph      |
| Wind Velocity Survival Rating | 200 km/h   125 mph     |

## Wind Forces At Wind Velocity Survival Rating

|                                       |                           |
|---------------------------------------|---------------------------|
| Angle $\alpha$ for MT Max             | -110 °                    |
| Axial Force (FA)                      | 25390 N   5708 lbf        |
| Force on Inboard Strut Side           | 8000 N   1798 lbf         |
| Force on Outboard Strut Side          | 11500 N   2585 lbf        |
| Side Force (FS)                       | 12577 N   2827 lbf        |
| Twisting Moment (MT)                  | -14132 N-m   -10423 ft lb |
| Weight with 1/2 in (12 mm) Radial Ice | 895 kg   1973 lb          |
| Zcg with 1/2 in (12 mm) Radial Ice    | 914 mm   36 in            |
| Zcg without Ice                       | 808 mm   32 in            |

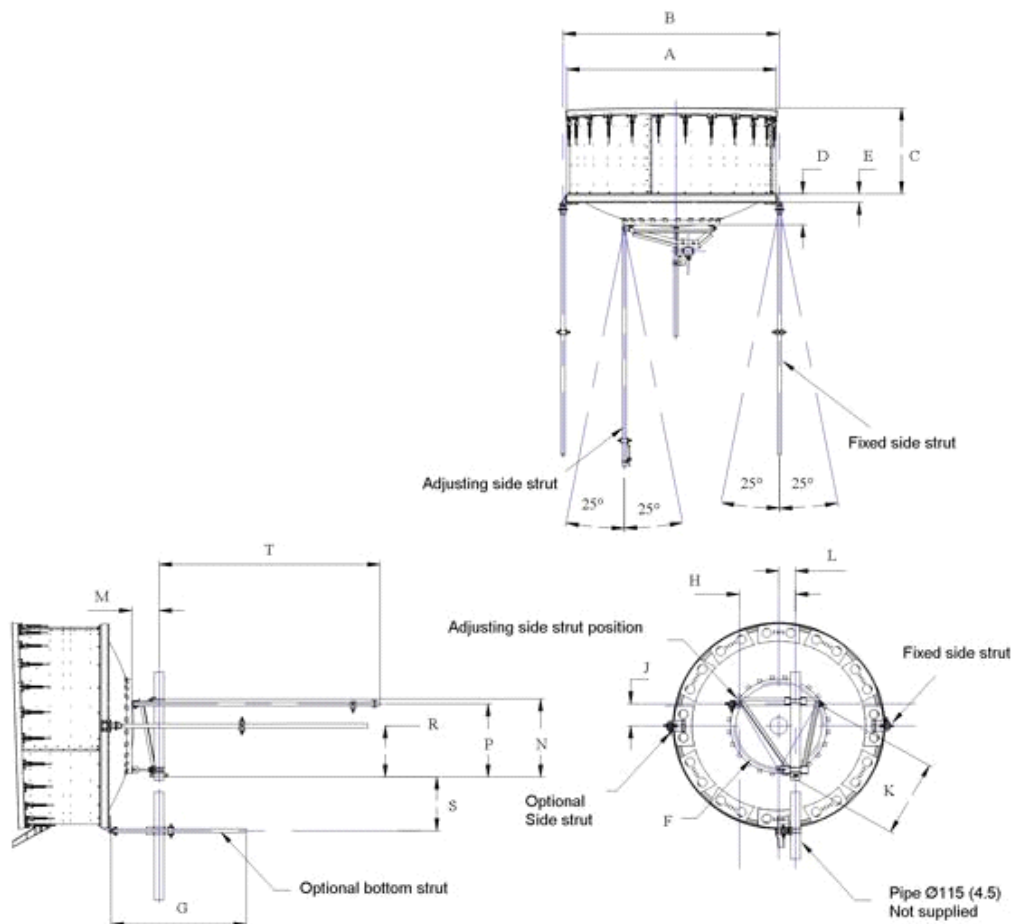
## Wind Forces At Wind Velocity Survival Rating Image



## Packed Dimensions

|                                     |                      |
|-------------------------------------|----------------------|
| <b>Gross Weight, Packed Antenna</b> | 730.0 kg   1609.4 lb |
| <b>Height</b>                       | 2140.0 mm   84.3 in  |
| <b>Length</b>                       | 3990.0 mm   157.1 in |
| <b>Volume</b>                       | 13.1 m <sup>3</sup>  |
| <b>Width</b>                        | 1530.0 mm   60.2 in  |

## Antenna Dimensions And Mounting Information



| ANTENNA DIMENSIONS            |              |   |              |
|-------------------------------|--------------|---|--------------|
| All dimensions in mm (inches) |              |   |              |
| A                             | 3775 (148.5) | K | 1205 (47.5)  |
| B                             | 3915 (154.5) | L | 215 (8.5)    |
| C                             | 1090 (43.0)  | M | 330 (13)     |
| D                             | 685 (27.0)   | N | 1225 (48.25) |
| E                             | 145 (5.75)   | P | 1145 (45.0)  |
| F                             | 1430 (56.25) | R | 790 (31.0)   |
| G                             | 1525 (60)    | S | 1140 (44.75) |
| H                             | 835 (32.75)  | T | 3050 (120)   |
| J                             | 355 (14.0)   |   |              |

## Regulatory Compliance/Certifications

**Agency**

ISO 9001:2015

**Classification**

Designed, manufactured and/or distributed under this quality management system



## \* Footnotes

**Axial Force (FA)**

Maximum forces exerted on a supporting structure as a result of wind from the most critical direction for this parameter. The individual maximums specified may not occur simultaneously. All forces are referenced to the mounting pipe.

**Boresite Cross Polarization Discrimination (XPD)**

The difference between the peak of the co-polarized main beam and the maximum cross-polarized signal over an angle twice the 3 dB beamwidth of the co-polarized main beam.

**Front-to-Back Ratio**

Denotes highest radiation relative to the main beam, at  $180^\circ \pm 40^\circ$ , across the band. Production antennas do not exceed rated values by more than 2 dB unless stated otherwise.

**Gain, Mid Band**

For a given frequency band, gain is primarily a function of antenna size. The gain of Andrew antennas is determined by either gain by comparison or by computer integration of the measured antenna patterns.

**Operating Frequency Band**

Bands correspond with CCIR recommendations or common allocations used throughout the world. Other ranges can be accommodated on special order.

**Packing**

Andrew standard packing is suitable for export. Antennas are shipped as standard in totally recyclable cardboard or wire-bound crates (dependent on product). For your convenience, Andrew offers heavy duty export packing options.

**Radiation Pattern Envelope Reference (RPE)**

Radiation patterns define an antenna's ability to discriminate against unwanted signals. Under still dry conditions, production antennas will not have any peak exceeding the current RPE by more than 3dB, maintaining an angular accuracy of  $\pm 1^\circ$  throughout

**Return Loss**

The figure that indicates the proportion of radio waves incident upon the antenna that are rejected as a ratio of those that are accepted.

**Side Force (FS)**

Maximum side force exerted on the mounting pipe as a result of wind from the most critical direction for this parameter. The individual maximums specified may not occur simultaneously. All forces are referenced to the mounting pipe.

**Twisting Moment (MT)**

Maximum forces exerted on a supporting structure as a result of wind from the most critical direction for this parameter. The individual maximums specified may not occur simultaneously. All forces are referenced to the mounting pipe.

**VSWR**

Maximum; is the guaranteed Peak Voltage-Standing-Wave-Ratio within the operating band.

**Wind Velocity Operational**

For VHLP(X), SHP(X), HX and USX antennas, the wind speed where the maximum antenna deflection is 0.3 x the 3 dB beam width of the antenna. For other antennas, it is defined as a deflection is equal to or less than 0.1 degrees.

**Wind Velocity Survival Rating**

The maximum wind speed the antenna, including mounts and radomes, where applicable, will withstand without permanent deformation. Realignment may be

required. This wind speed is applicable to antenna with the specified amount of radial ice.