

**ALPS  
GREEN  
DEVICES**

Revised 2013/02/04

# **GLMH Series Liquealloy™**

## **Power Inductor**

### **Technical Data Sheet**

## Specification

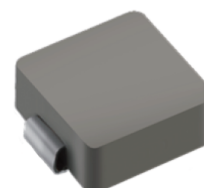
### Liquialloy™ Power Inductor GLMH Series

#### Features

- 7.5X6.5mm square and 3.0mm height
- Adopt Liquialloy™, a low-loss material developed by Alps
- Low core loss even in high-frequency switching operations
- Narrow DCR tolerance
- Optimized for high currents (low DCR)
- Contributes to smaller and more efficient power supplies
- Operating Temperature : -20 ~ +125°C (Including self temperature rise)
- RoHS compliant

#### Application

- DC/DC converters for notebook PCs and servers, etc.
- POL (Point of Load) power supplies



Outer Appearance of Liquialloy™ Inductor

Part No.	Inductance ( $\mu$ H) at 100kHz	DC Resistance* (m $\Omega$ )	Rated Current	
			Saturation Current $\Delta L/L=30\%$ (A) Max. (Typ.)	Heat Rating Current $\Delta T=40^{\circ}\text{C}$ (A) Max. (Typ.)
GLMHR1103A	0.11 $\pm$ 20%	0.57 $\pm$ 5%	25 (28)	28 (30)
GLMHR2303A	0.23 $\pm$ 20%	1.10 $\pm$ 5%	18 (20)	22 (24)

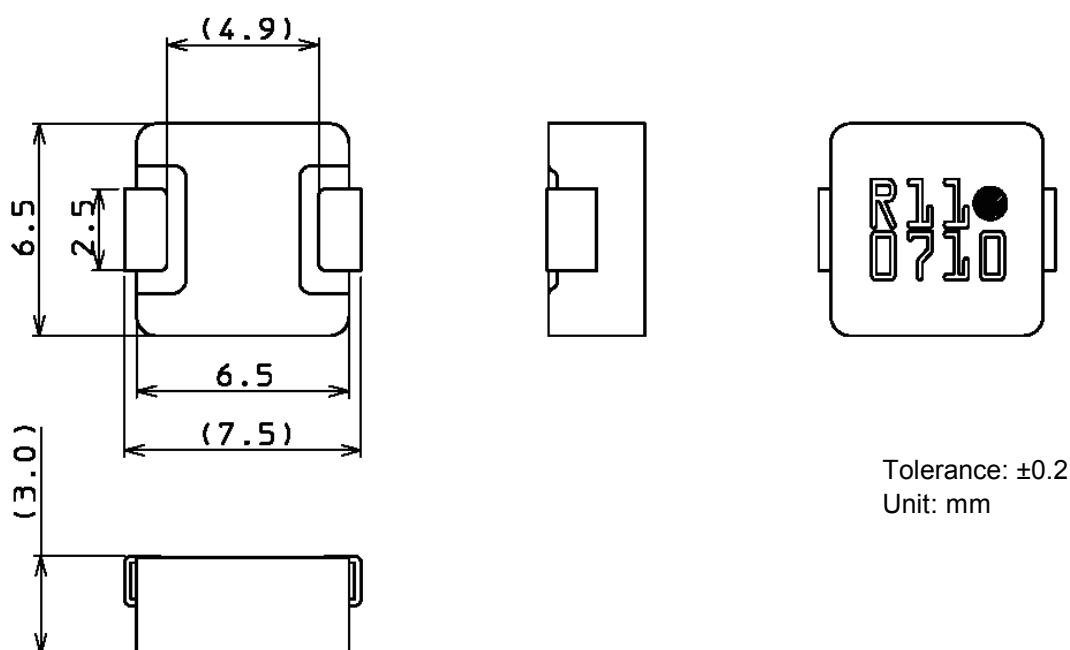
\* : measured under 20°C.



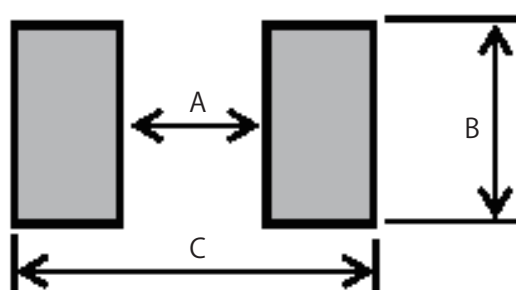
## Specification

### Liquialloy™ Power Inductor GLMH Series

#### Outline Dimensions and Schematics



#### Recommend Land Pattern Dimensions



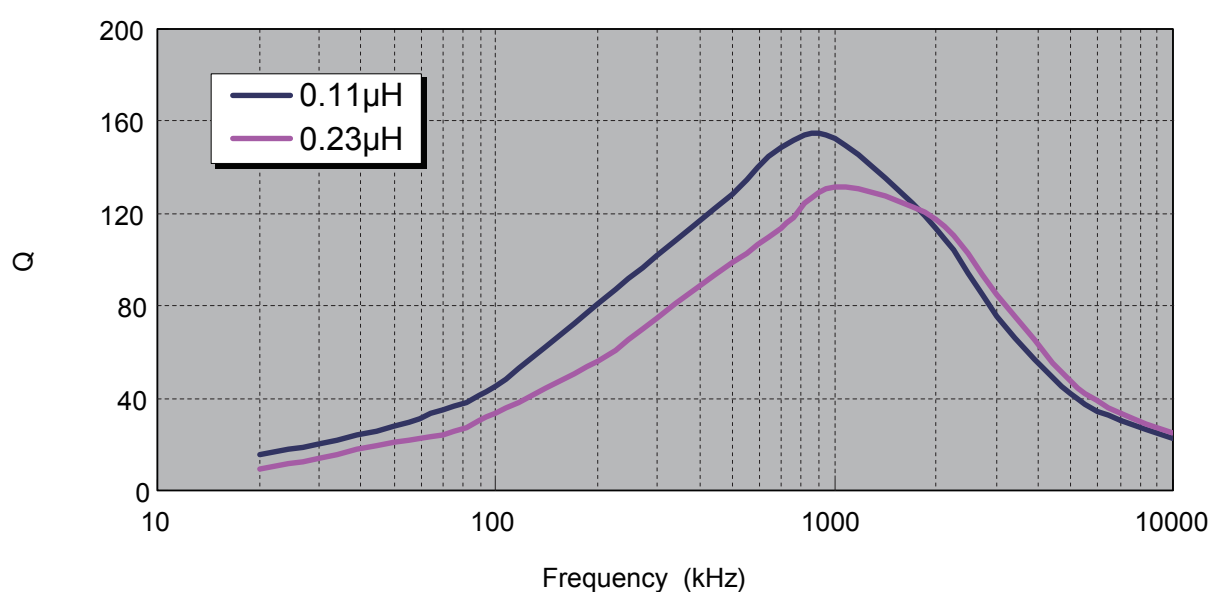
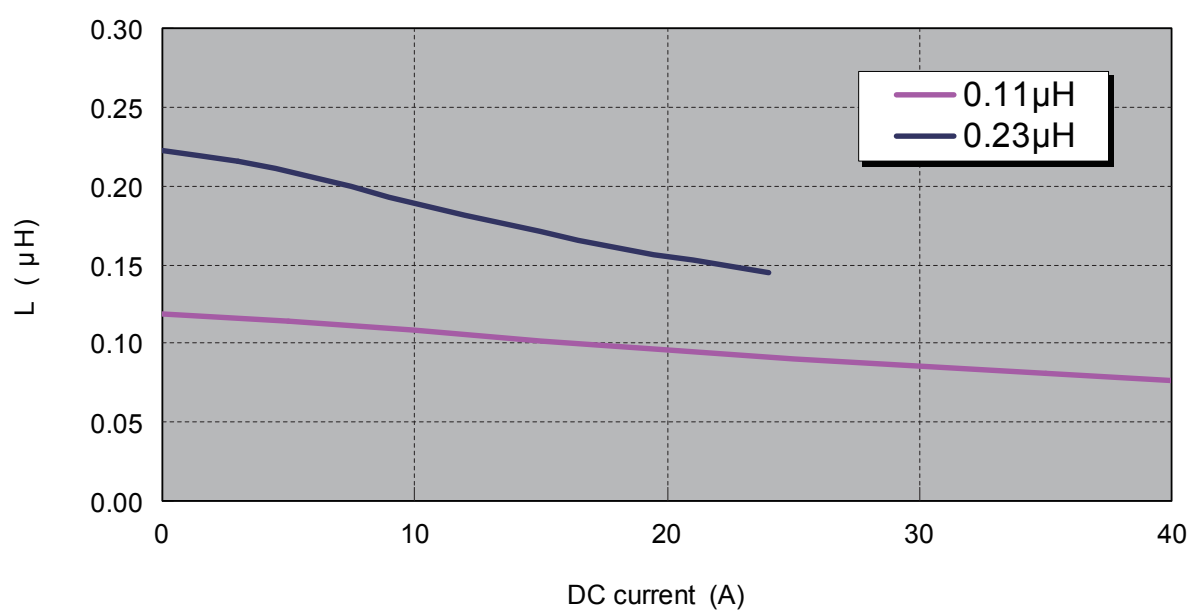
A	4
B	3.5
C	8

Unit: mm



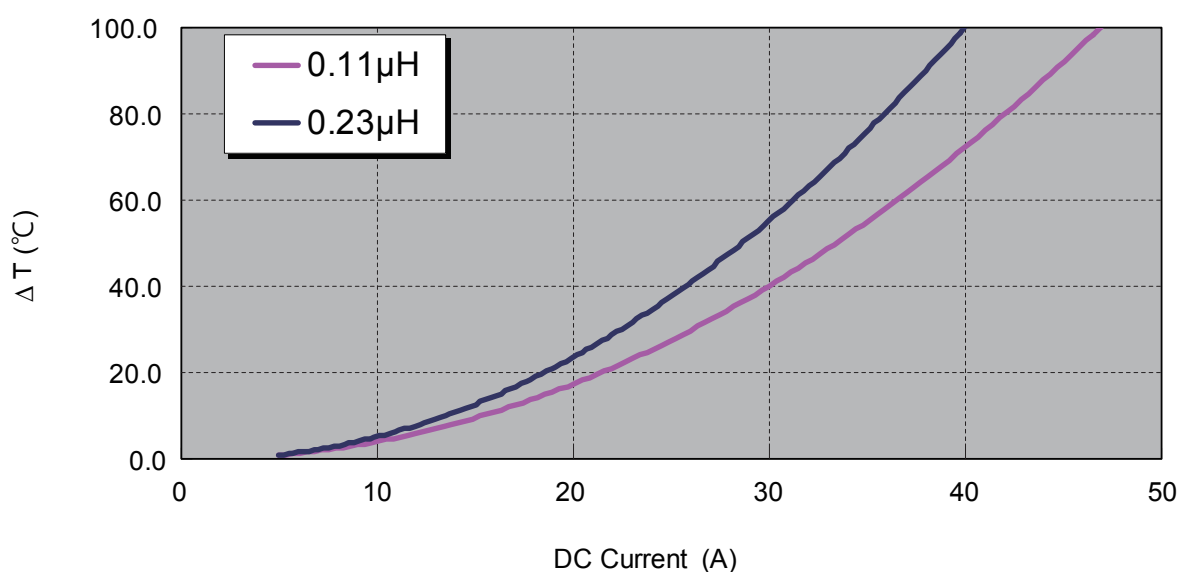
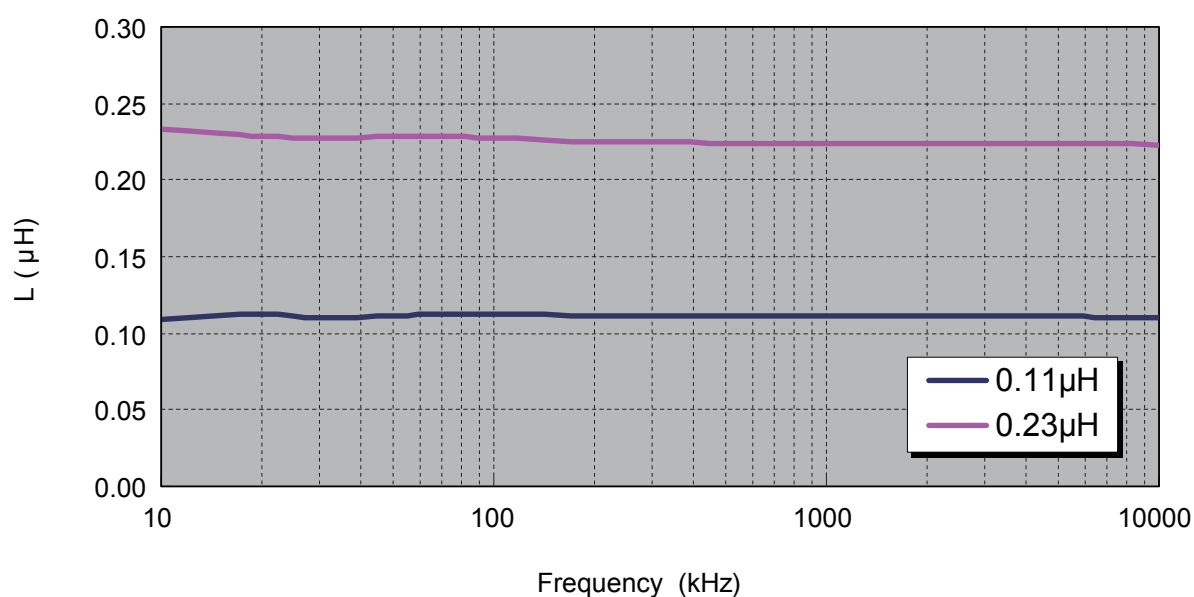
## DC bias & Q-f Characteristics

### Liquialloy™ Power Inductor GLMH Series

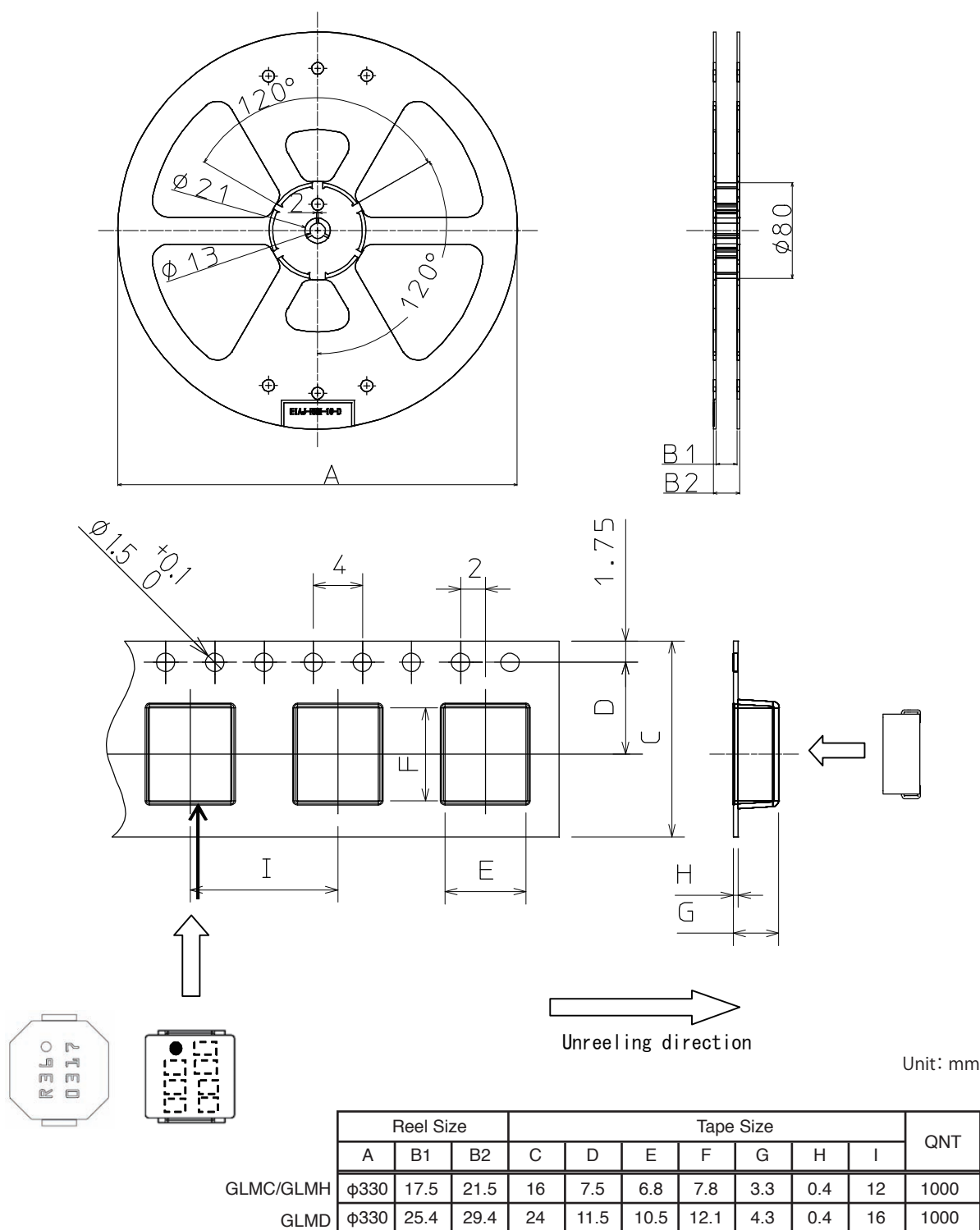


## L-f characteristics & Temperature rise ( $\Delta T$ ) dependence on Load Current

### Liquialloy™ Power Inductor GLMH Series



## Packing



## Attention

### Precautions when handling our products

1. For the export of products which are controlled items subject to foreign and domestic export laws and regulations, you must obtain approval and/or follow the formalities of such laws and regulations.
2. Products must not be used for military and/or antisocial purposes such as terrorism, and shall not be supplied to any party intending to use the products for such purposes.
3. Unless provided for otherwise, the products have been designed and manufactured for application in equipment and devices which are sold to end users in the market, including audio-visual (AV) equipment, electrical home appliances, office machines, information and communication equipment, and amusement equipment. The products are not intended for use in, and must not be used for, any application for nuclear equipment, driving equipment for aerospace or any other unauthorized use. With the exception of the abovementioned prohibited applications, please contact an Alps sales representative and/or evaluate the total system regarding applicability for applications involving high levels of safety and liability such as medical equipment, burglar alarm equipment, disaster prevention equipment and undersea equipment. Please also incorporate fail-safe design, protection and redundant circuitry, malfunction protection, and/or fire protection into the complete system to ensure safety and reliability of the total system.
4. Before using products which were not specifically designed for use in automotive applications, please contact an Alps sales representative.

### Cautions regarding this technical data sheet

1. The specifications herein are an overview of the specifications. Obtain official specifications before use.
2. The colors of the products this technical data sheet may slightly differ from those of the actual products.
3. The external appearance, functions and other specifications herein may be discontinued without prior notice.

### ■Inquiries about Products

Products Information Center

+81 (3) 5499-8154

Products Information Site

[Http://www.alps.com/products/e/](http://www.alps.com/products/e/)

Development, Production

**ALPS GREEN DEVICES CO., LTD.**

Sales

**ALPS ELECTRIC CO., LTD.**

1-7, Yukigaya-otsukamachi, Ota-ku, Tokyo, Japan 145-8501



# Mouser Electronics

Authorized Distributor

Click to View Pricing, Inventory, Delivery & Lifecycle Information:

ALPS:

[GLMHR2303A](#) [GLMHR1103A](#) [GLMCR4701B](#)