

11

11

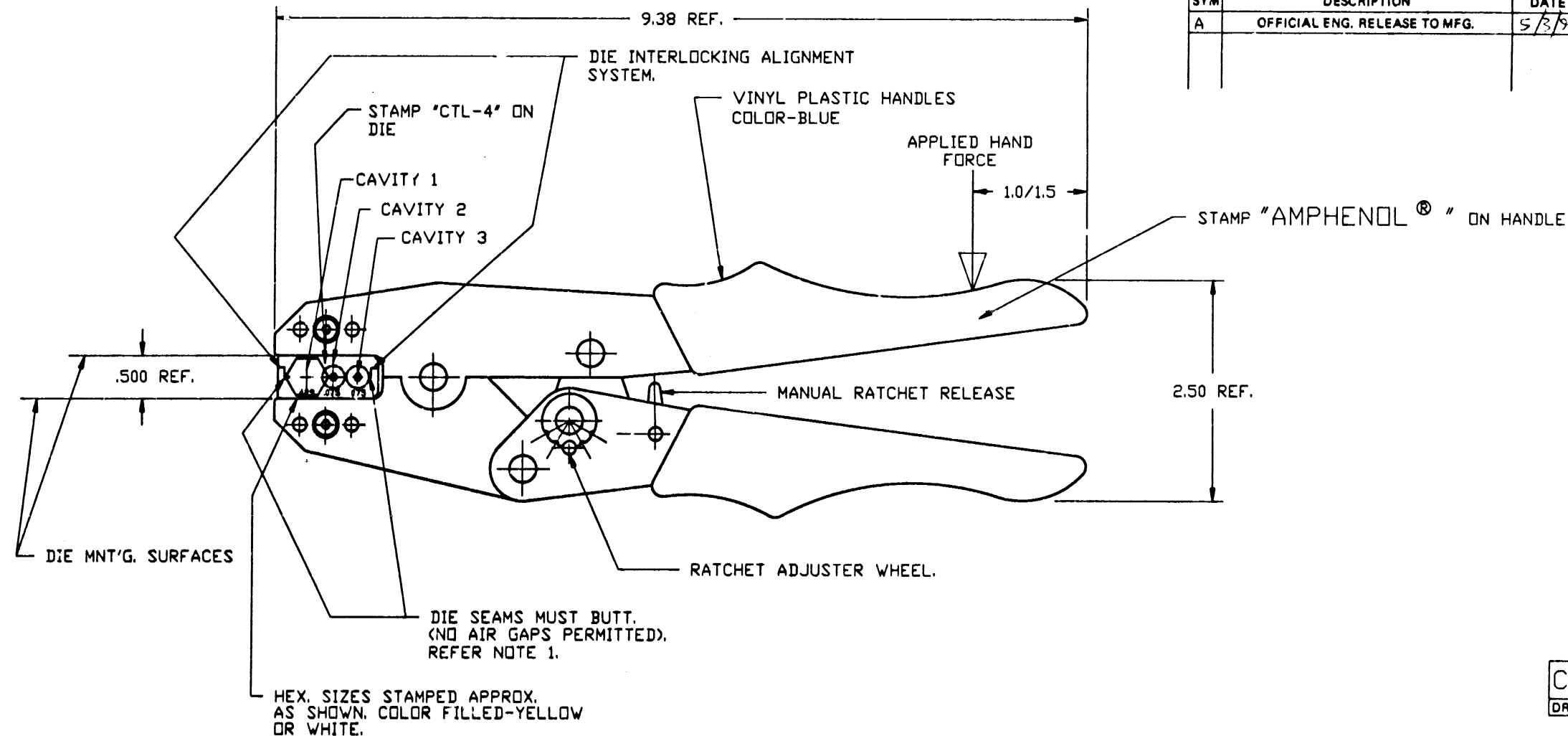
98

8.5

11

17

DO NOT SCALE THIS DRAWING



REVISIONS				
SYM	DESCRIPTION	DATE	E.C.O. NO.	APPR.
A	OFFICIAL ENG. RELEASE TO MFG.	5/3/91	38063	DR

CTL-4
DRAWING NUMBER
ISSUE
A

NOTES:

1. INITIAL TOOL SETTING REQUIRMENTS:

WITH DIES FIRMLY AFFIXED IN TOOL ON THE DIE MNT'G. SURFACES, CLOSE THE TOOL FULLY (UNTIL THE RATCHET RELEASES) WITH 25-35 LBS. HAND FORCE. THE DIES MUST BE 'BUTTED' (TOUCHING BOTH FRONT & REAR SURFACES). THE RATCHET ADJUSTER WHEEL SHOULD BE POSITIONED IN THE CENTER INDENT (+/- ONE INDENT POSITION).

2. NOTE: LABEL 999-309 MUST BE AFFIXED TO TOOL CONTAINER BOX.

CAVITY NO.	DIM. ACROSS HEX FLATS	GROOVE ACCOMMODATIONS
1	.429 +/- .003	BELDEN 8227 9207, 89207, IBM 7362211
2	.075 +/- .003	CENTER CONTACT
3	.075 +/- .003	CENTER CONTACT

RFX PROGRAM

PART NO.	QUAN	UOM	REV	DESCRIPTION	CODE	FINISH
----------	------	-----	-----	-------------	------	--------

LIST OF MATERIAL

REMOVE ALL BURRS, BREAK CORNERS AND SHARP EDGES TO MAXIMUM UNLESS OTHERWISE SPECIFIED		UNLESS OTHERWISE SPECIFIED DIMENSIONS ARE IN INCHES. TOLERANCES NOT OTHERWISE SPECIFIED ARE:		DRAWN BY TERRI ALBERA DATE 4-30-91		TITLE QUICK CRIMP TOOL FOR TWINAX PLUGS		Amphenol Corporation	
NOTICE - These drawings, specifications, or other data (1) are, and remain the property of Amphenol Corp. (2) must be returned upon request, and (3) are confidential and are not to be disclosed to any person other than those to whom they are given by Amphenol Corp. The furnishing of these drawings, specifications, or other data by Amphenol Corp. or by any other person to anyone for any purpose is not to be regarded by implication or otherwise as in any manner licensing, granting rights or permitting such holder or any other person to manufacture, use or sell any product, process or design, patented or otherwise, that may in any way be related to or disclosed by said drawings, specifications or other data.		3 PLACE DECIMAL 1.015 (0.381 mm)		CHECKED D. ROYCE DATE 5-1-91		ENGINEER D. ROYCE DATE 5-1-91		RF/Microwave Operations Danbury, Conn. U.S.A.	
NEXT ASSY		USED ON		QUALITY ASSURANCE DATE 5-3-91		MFG. AND DATE 5/3/91		SCALE 1=1	
MATERIAL AS PURCHASED		REFERENCE DRAWING NO. EAR 962370-0		CODE IDENTIFICATION 74868		DRAWING SIZE C		DRAWING NO. CTL-4	
SPECIFICATION		FINISH AS PURCHASED		SHEET 1		OF 1		ISSUE A	

Mouser Electronics

Authorized Distributor

Click to View Pricing, Inventory, Delivery & Lifecycle Information:

[Amphenol:](#)

[CTL-4](#)