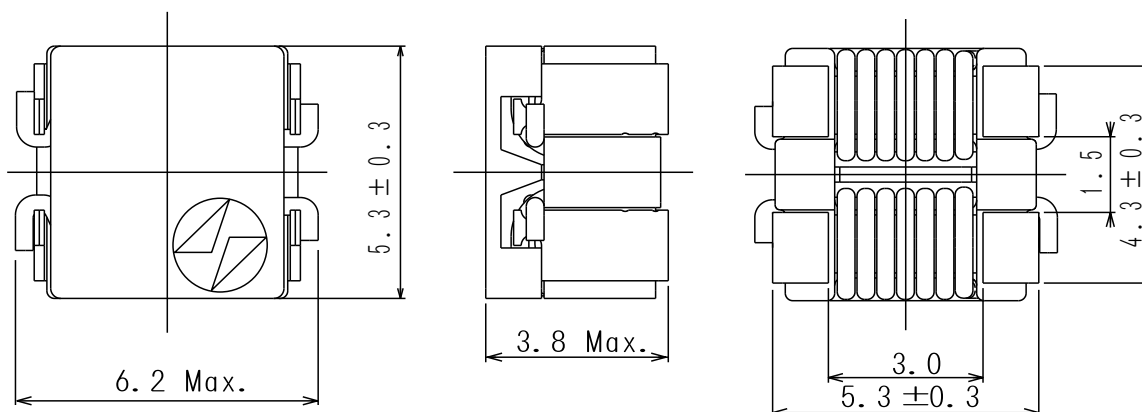
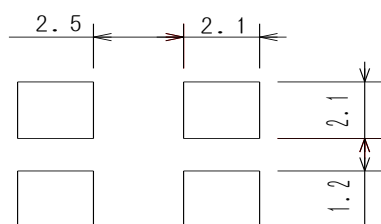
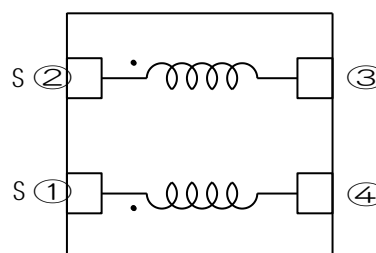


**Type: CPFC6D36**
**◆ Product Description**

- 6.2×5.6mm Max.(L×W), 3.8mm Max. Height .

**◆ Feature**

- High impedance in wide range of frequency.
- Ideally used in DC line noise for LCD TV and PC.
- RoHS Compliance


**◆ Dimensions (mm)**

**◆ Land Pattern (mm)**

**◆ Schematics (Bottom)**


\* Winding start is #1,#2 or #4,#3.

\* #1 and #4,#2 and #3 : should be same polarity.

**◆ Specification**

Part Name	Stamp	Impedance (Ω )<Min.> (1,2-3,4) 100MHz	D.C.R. (mΩ )<Max.> (1-4),(2-3)	Rated current (1-2)(A) ※1 (3-4) shorted
CPFC6D36NP-1ØØMØ6	060	600	20	2.5

※ Rated current: The DC current at which the temperature rise is  $\Delta t=30^{\circ}\text{C}$ . ( $T_a=20^{\circ}\text{C}$ ).