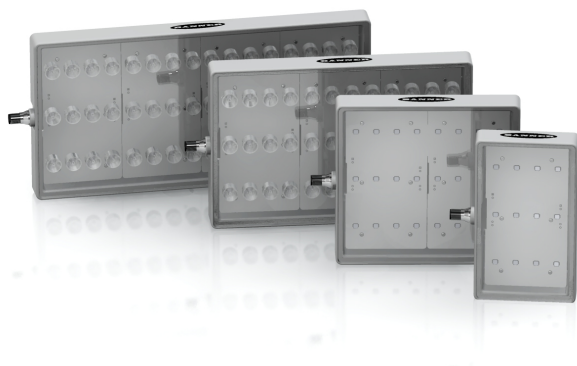


WLA Series Work Light

General-Purpose LED Work Light

For the latest technical information about this product, including specifications, dimensions, and wiring, see www.BannerEngineering.com/IL_WLA



- High power solid state LED array with cool white light
- Illuminates a large area with an even pattern of light and no shadows
- Designed for area and machine lighting
- Rugged thermoplastic housing rated to IP69K
- Lensed models provide a concentrated, more intense, beam pattern
- Available in four sizes
- Cabled and Quick Disconnect models available

Lensed models shown at left;
non-lensed models shown at right

Models

Non-Lensed Models	Lensed Models	Housing Length "L ₁ " †	Connection*	LED Color	Environmental Rating	Input Voltage
WLAW105X180Q	WLAW105X180L11Q	105 mm	4-pin Euro integral QD connector	Cool white	IP69K	12 to 30V dc
WLAW190X180Q	WLAW190X180L11Q	190 mm				
WLAW275X180Q	WLAW275X180L11Q	275 mm				
WLAW360X180Q	WLAW360X180L11Q	360 mm				

† See [Dimensions](#) on page 3.

* Integral QD models only are listed.

- For integral 2 m (6.5') PVC cable, omit suffix **Q** from model number (example, "**WLAW105X180**").
- A model with a QD requires a mating cordset (see [4-Pin Euro-Style Cordsets](#) on page 3).



WARNING: Not To Be Used for Personnel Protection

Never use this product as a sensing device for personnel protection. Doing so could lead to serious injury or death. This product does NOT include the self-checking redundant circuitry necessary to allow its use in personnel safety applications. A sensor failure or malfunction can cause either an energized or de-energized sensor output condition.



Specifications

Supply Voltage and Current

12 to 30V dc (10% max. ripple)

Max current per length:

Light Length	12V dc	24V dc	30V dc	Watts	Lumens (Typical)
105 mm	1.0A	0.5A	0.4A	12	450
190 mm	2.0A	1.0A	0.8A	24	900
275 mm	3.0A	1.5A	1.2A	36	1350
360 mm	4.0A	2.0A	1.6A	48	1800

Light Characteristics

Color Temperature (CCT): 5000 - 8300K

Color: Cool White

Useful Life

When operating within specifications, output will decrease less than 30% after 50,000 hours.

Construction

PBT housing; acrylic window; nickel-plated brass connector or PVC-jacketed cable

Mounting

Flat-mount or accessory bracket

Environmental Rating

Rated IEC IP67 and IP69K, per DIN 40050

Connections

Integral 4-pin Euro style QD, or 2 m (6.5') integral cable

Operating Temperature

-20° to +50° C (-4° to +122° F)

Storage Temperature

-40° to +70° C (-40° to +158° F)

Vibration and Mechanical Shock

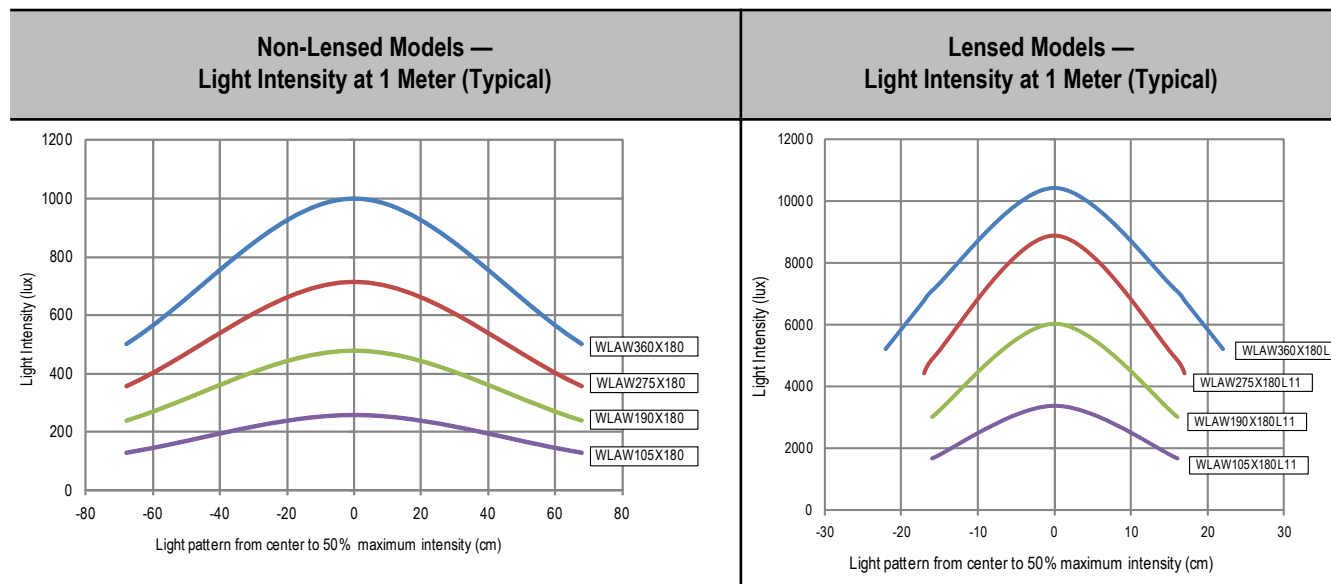
All models meet Mil. Std. 202F requirements method 201A (vibration: 10 to 60 Hz max., double amplitude 0.06", maximum acceleration 10G). Also meets IEC 947-5-2; 30G 11 ms duration, half sine wave.

Certifications



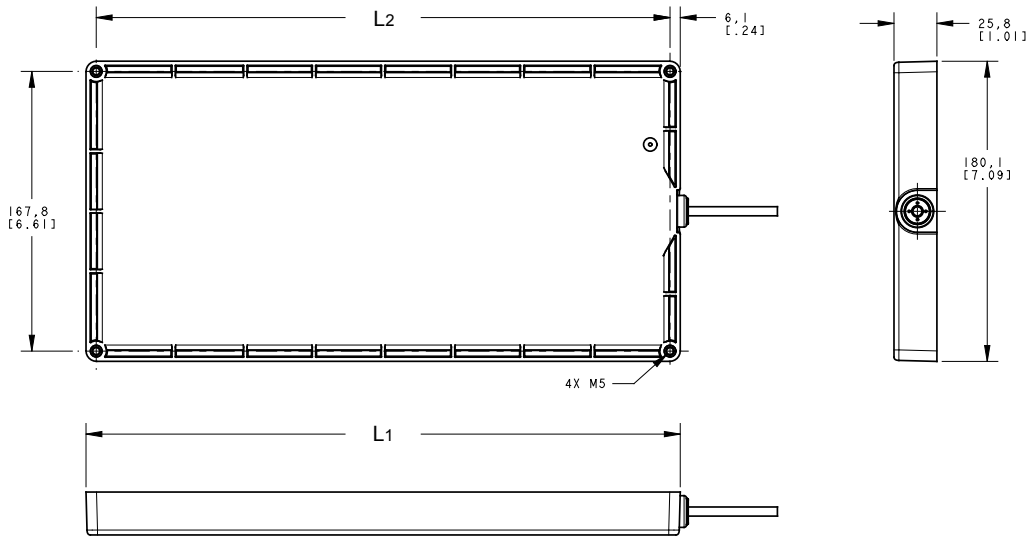
NOTE: Do not spray cable with high-pressure sprayer, or cable damage will result.

Beam Patterns



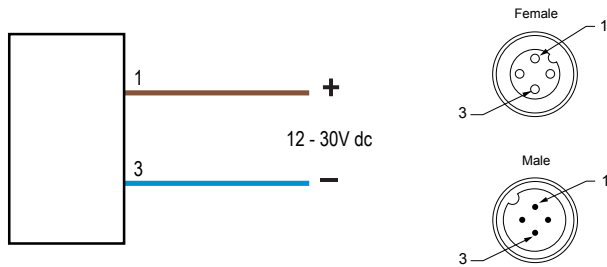
Dimensions

Measurements in mm [in]



Model	L_1	L_2
WLAW105X..	105.1 mm (4.14")	92.8 mm (3.66")
WLAW190X..	180.1 mm (7.09")	167.8 mm (6.61")
WLAW275X..	272.7 mm (10.74")	260.3 mm (10.25")
WLAW360X..	356.6 mm (14.04")	344.3 mm (13.55")

Wiring



Wiring Key:

1 = Brown
3 = Blue

4-Pin Euro-Style Cordsets

4-Pin M12/Euro-Style Cordsets (straight connector)

MQDC-406, 2 m (6.5')
MQDC-415, 5 m (15')
MQDC-430, 9 m (30')

4-Pin M12/Euro-Style Cordsets (right-angle connector)

MQDC-406RA, 2 m (6.5')
MQDC-415RA, 5 m (15')
MQDC-430RA, 9 m (30')

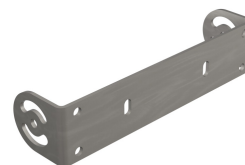
Accessory Brackets

SMBBSSM



- 316 stainless steel bracket and hardware
- Includes 2 brackets; four M5 socket drive, button head screws to attach to light

SMBBSRA



- 316 stainless steel bracket and hardware
- Right-angle swivel bracket for versatile orientation

Contact Us

For more information: Contact your local Banner representative or Banner Corporate Offices around the world.

Corporate Headquarters: Banner Engineering Corp. 9714 Tenth Ave. North, Mpls., MN 55441, Tel: 763-544-3164, www.bannerengineering.com, sensors@bannerengineering.com

Europe: Banner Engineering Europe Park Lane, Culliganlaan 2F, Diegem B-1831 BELGIUM, Tel: 32-2 456 07 80, Fax: 32-2 456 07 89, www.bannereurope.com, mail@bannereurope.com

Latin America: Contact Banner Engineering Corp. (US) or e-mail **Mexico:** mexico@bannerengineering.com; or **Brazil:** brasil@bannerengineering.com

Asia:

Banner Engineering China Shanghai Rep Office Rm. G/H/I, 28th Flr. Cross Region Plaza No. 899, Lingling Road, Shanghai 200030 CHINA, Tel: 86-21-54894500, Fax: 86-21-54894511, www.bannerengineering.com.cn, sensors@bannerengineering.com.cn

Banner Engineering Japan Cent-Urban Building 305 3-23-15, Nishi-Nakajima Yodogawa-Ku, Osaka 532-0011 JAPAN, Tel: 81-6-6309-0411, Fax: 81-6-6309-0416, www.bannerengineering.co.jp, mail@bannerengineering.co.jp

Banner Engineering Int'l Incorporated Taiwan Rep. Office 8F-2, No. 308, Sec. 1, Neihu Rd. Taipei, Taiwan 114 Phone: +886 2 8751 9966 #15 | Fax: +886 2 8751 2966, www.bannerengineering.com.tw, info@bannerengineering.com.tw

Banner Engineering India Pune Head Quarters Office, No. 1001 Sai Capital, Opp. ICC Senapati Bapat Road, Pune 411016 INDIA, Tel: 91-20-66405624, Fax: 91-20-66405623, www.bannerengineering.co.in, india@bannerengineering.com