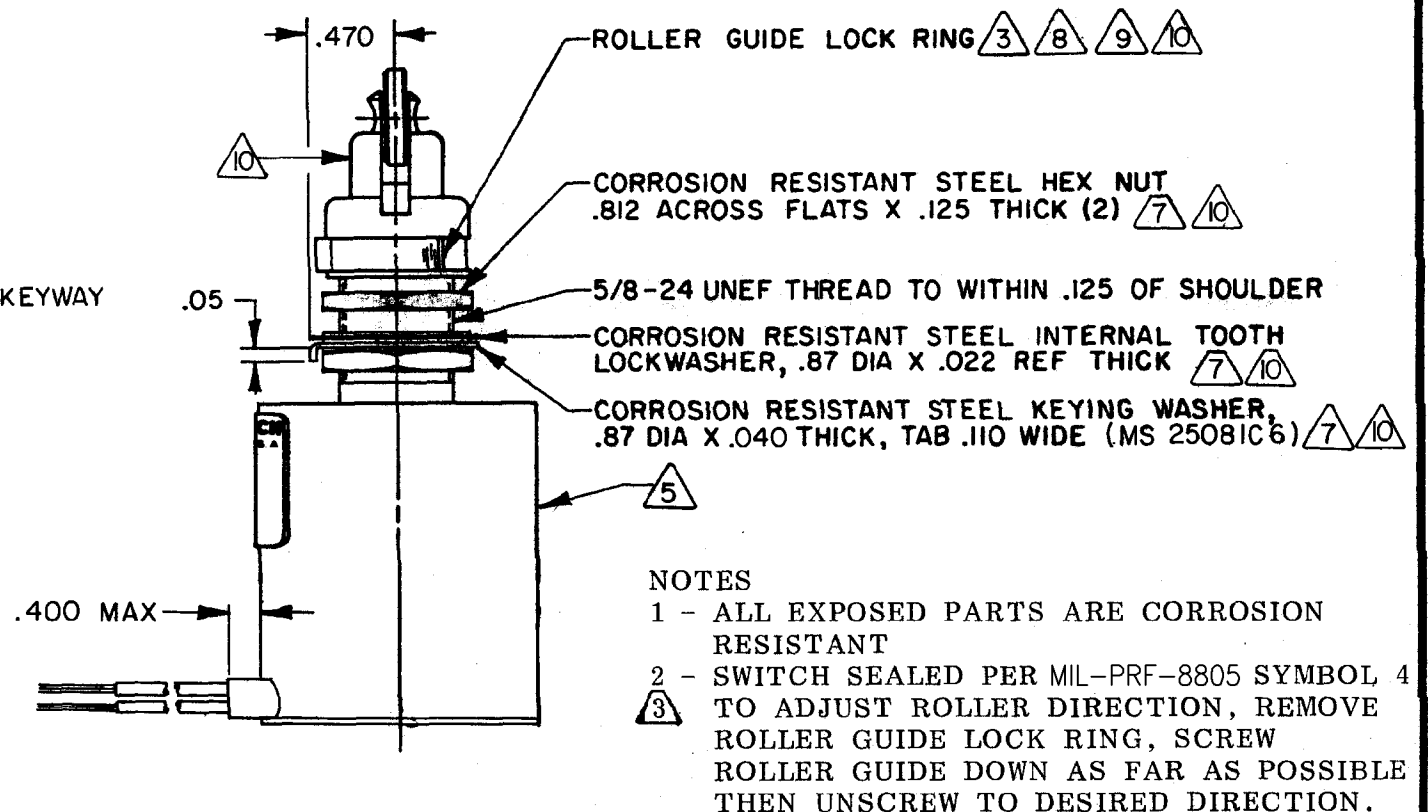
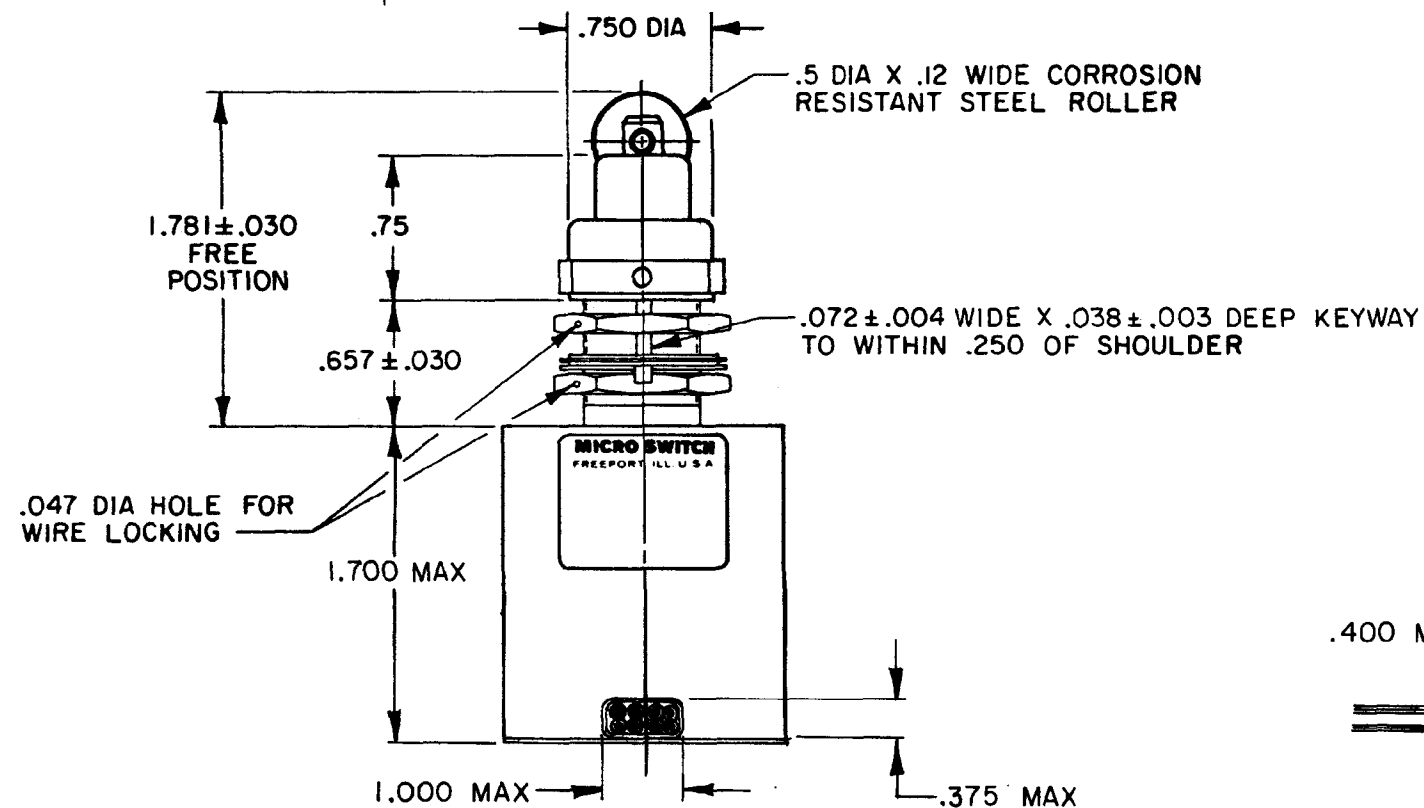
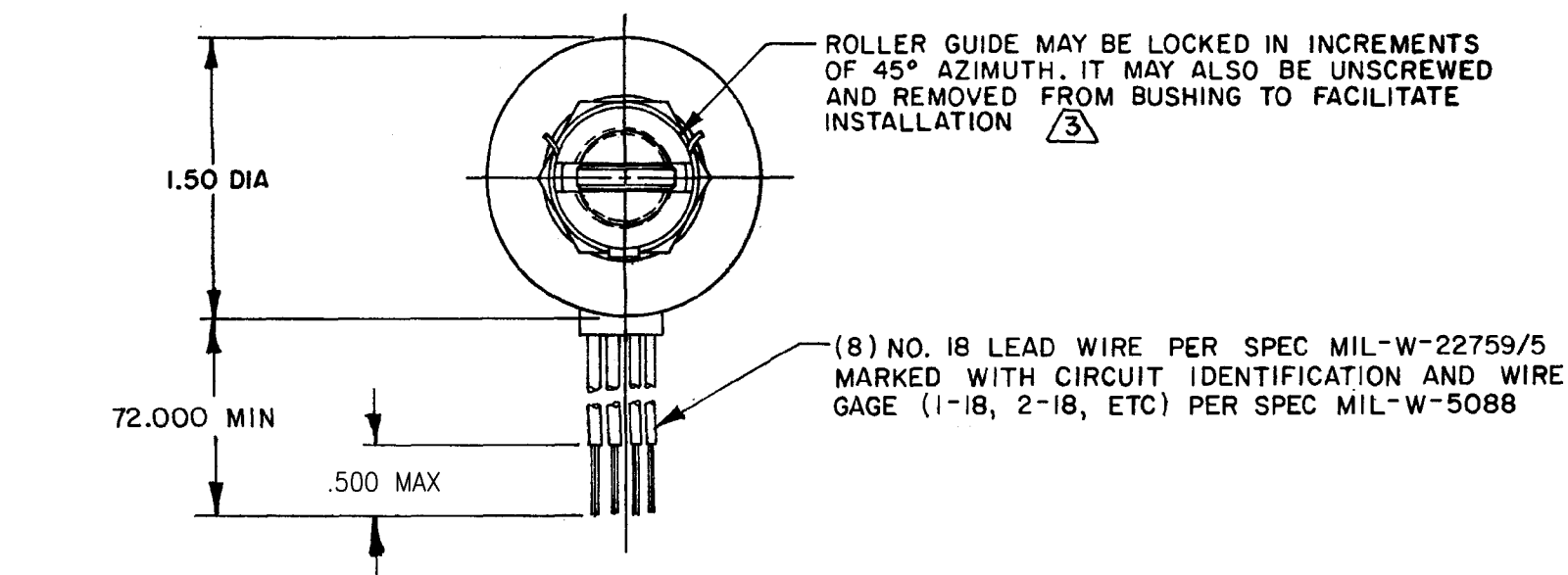
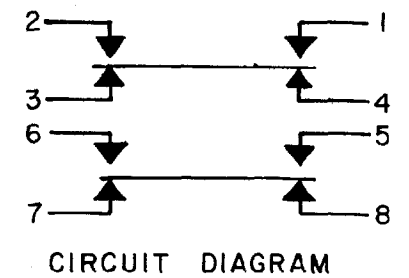


## FED. MFG. CODE 91929

CATALOG LISTING  
124EN186-6



## NOTES

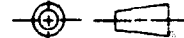
- 1 - ALL EXPOSED PARTS ARE CORROSION RESISTANT
- 2 - SWITCH SEALED PER MIL-PRF-8805 SYMBOL 4
- ③ TO ADJUST ROLLER DIRECTION, REMOVE ROLLER GUIDE LOCK RING, SCREW ROLLER GUIDE DOWN AS FAR AS POSSIBLE THEN UNSCREW TO DESIRED DIRECTION.

SECURE BY REPLACING ROLLER GUIDE LOCK RING

- 4 - COINCIDENCE OF OPERATING AND RELEASING POINTS: .010 PLUNGER TRAVEL
- 5 - CIRCUITRY, MICRO IDENT., CAT. LIST., MCDONNELL DOUGLAS NUMBER-5M1020-30 AND DATE CODE PERMANENTLY MARKED ON SIDE OF HOUSING
- 6 - NOTED ELECTRICAL RATINGS APPLY AS SPECIFIED IN MIL-PRF-8805/40-4 UP TO 185°F
- 7 - REPLACEMENT MOUNTING HARDWARE: PACKET 19PA8
- 8 - REPLACEMENT ROLLER GUIDE AND LOCK RING PACKET 15PA104
- 9 - REPLACEMENT LOCK RING PACKET 15PA137
- 10 - HARDWARE MAY BE PACKAGED UNASSEMBLED PER MIL-PRF-8805

THIS DRAWING COVERS A PROPRIETARY ITEM AND IS THE PROPERTY OF MICRO SWITCH, A DIVISION OF HONEYWELL. THIS DRAWING IS NOT TO BE COPIED OR USED WITHOUT THE APPROVAL OF MICRO SWITCH.

### THIRD ANGLE PROJECTION



SCALE FULL

DO NOT SCALE PRINT

**TOLERANCES**  
APPLY TO DESIGN UNITS. CONVERSIONS ARE ONLY FOR  
REFERENCE. UNLESS NOTED, TOLERANCES ARE ±

CHARACTERISTICS		ELECTRICAL DATA		
OPERATING FORCE ----- 6-12 LB		CONTACT ARRANGEMENT		
FULL OVERTRAVEL FORCE ---- 30 LB MAX		SEE CIRCUIT DIAGRAM		
RELEASE FORCE ----- 5 LB MIN		LOAD	28 VDC	
PRETRAVEL ----- .070 MAX			SEA LEVEL	50,000 FT.
DIFFERENTIAL TRAVEL ---- .045 MAX			RES	15
OVERTRAVEL ----- .250 MIN			IND	10
			MOTOR	5

TOLERANCES			
APPLY TO DESIGN UNITS. CONVERSIONS ARE ONLY FOR REFERENCE. UNLESS NOTED, TOLERANCES ARE 2			
	DIM. mm	TOL. mm/in	
NO PLACES	X	1/64	
ONE PLACE	X,X	0.01/01	X,X 0.01/01
TWO PLACES	X,XX	0.161/008	X,XX 0.001/01
THREE PLACES			X,XXX 0.131/008
ANGLES			
	SI METRIC		US CUSTOMARY
DESIGN UNITS	<input type="checkbox"/>		<input checked="" type="checkbox"/>
RAW MATERIAL—COMMERCIAL STANDARD			
MICRO SWITCH STANDARDS APPLY			
DIMENSIONS ARE TO BE MET BEFORE PROTECTIVE COATINGS ARE APPLIED			
WEIGHT	16.5 OZ MAX		

# Mouser Electronics

Authorized Distributor

Click to View Pricing, Inventory, Delivery & Lifecycle Information:

[Honeywell:](#)

[124EN186-6](#)