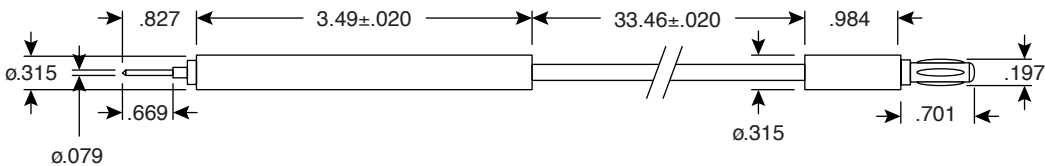
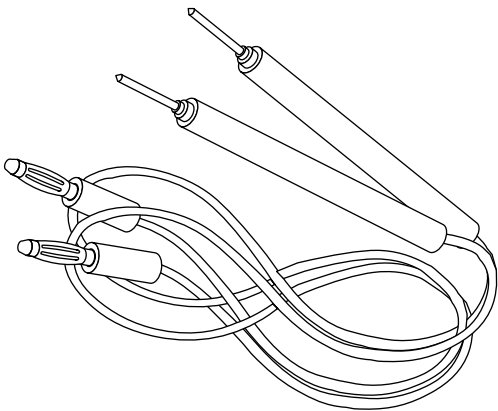


# Test Leads

13PN071-EX



Test Leads



Dimensions: In.

SPECIFICATIONS	
Type:	test prod to banana plug
Withstand voltage:	500VAC for 1 minute
Insulation resistance:	50MΩ min. @ 500VDC
Lead wire:	24AWG
Banana plug handle:	polypropylene
Banana plug tip:	nickel plated brass / phosphor bronze
Test prod handle:	ABS
Test prod tip:	nickel plated brass
Colors:	red, black
RoHS Compliant by Exemption	

Date Last Revised: 12-26-05

Available from Mouser Electronics  
1-800-346-6873  
www.mouser.com

KC- 300874

13PN071-EX

# Mouser Electronics

Authorized Distributor

Click to View Pricing, Inventory, Delivery & Lifecycle Information:

[Kobiconn:](#)

[13PN071-EX](#)