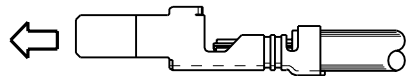
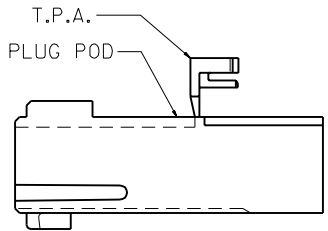
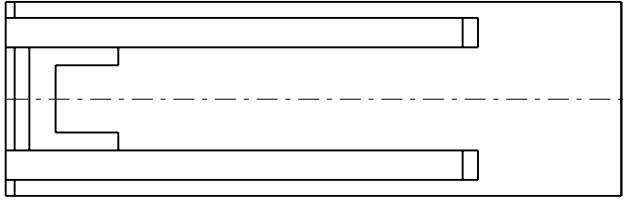
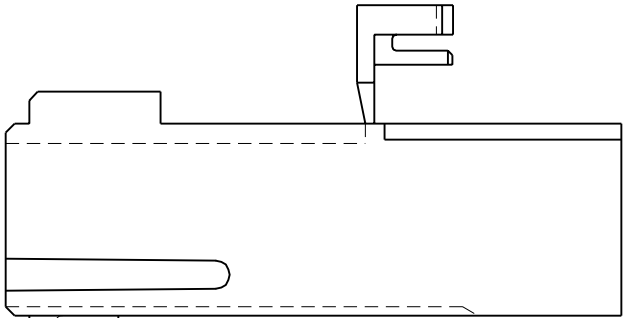
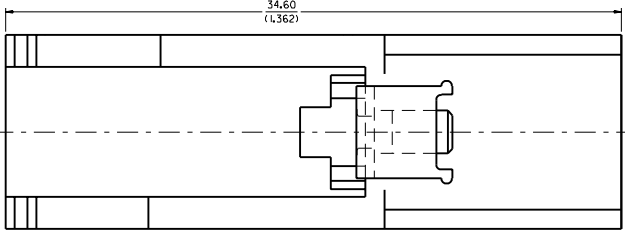
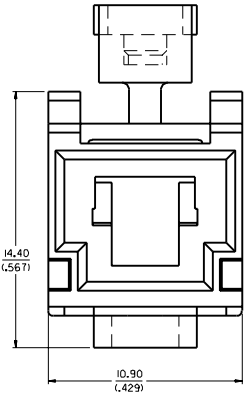
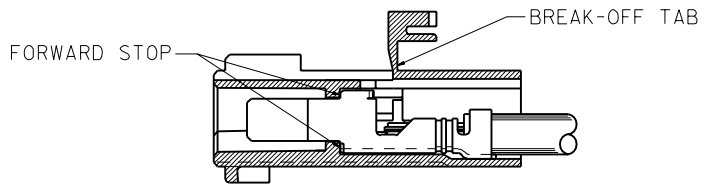


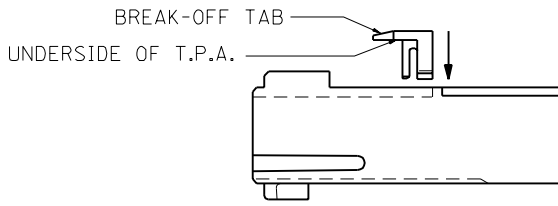
THIS PRODUCT MUST NEVER BE USED WITHOUT THE T.P.A.



1. TERMINALS ARE TO BE ORIENTATED AND LOADED INTO HOUSING AS SHOWN.



2. TERMINALS ARE LOADED WHEN SEATED AGAINST THE FORWARD STOP.



3. AFTER THE TERMINALS ARE LOADED INTO THE HOUSING, THE T.P.A. IS TO BE "BROKEN OFF". WITH THE BREAK-OFF TAB FACING FORWARD AS SHOWN, INSERT THE T.P.A. THRU THE HOLE IN TOP OF HOUSING UNTIL THE UNDERSIDE OF THE T.P.A. CONTACTS THE TOP SURFACE OF THE HOUSING. THIS RETAINS THE TERMINAL IN THE HOUSING UNTIL IT IS LOADED INTO THE SHROUD.

- NOTES:
1. MATERIAL: POLYESTER (PBT), UN-FILLED, UL 94V-0. COLOR: BLACK
 2. FINISH: NONE
 3. PRODUCT SPEC: PS-43510-002.
 4. ALL DIMENSIONS SHOWN FOR REFERENCE ONLY.
 5. USES STANDARD 42817 MINI-FIT SR, MALE CRIMP TERMINALS.
 6. MATES WITH 43510-0001 RECEPTACLE POD.
 7. PART TO BE USED WITH 43839-0*** PLUG SHROUD. (SEE SHROUD DRAWING FOR ASSEMBLY INFORMATION)

| ADD TERM. INSTRU. | | QUALITY SYMBOLS | | GENERAL TOLERANCES: (UNLESS SPECIFIED) | | SCALE | | DESIGN UNITS | | THIRD ANGLE PROJECTION | | DIMENSIONS: | | SHT | | REV | |
|------------------------|--|-----------------|--|--|--|--|--|--------------------|--|------------------------|--|-------------|--|-----------|--|-----|--|
| SEC NO. UCR2000-0468 | | MAJOR | | mm | | 8 : 1 | | mm | | mm | | mm | | mm | | mm | |
| DRAWING POLAR 0000/01 | | CRITICAL | | INCH | | DRAWN BY & DATE | | mm | | mm | | mm | | mm | | mm | |
| CIRCUIT COMERC 0000/03 | | | | 4 PLACES ±0.--- ±.--- | | COMERC1 97/10/06 | | CHECKED BY & DATE | | mm | | mm | | mm | | mm | |
| APPR. COMERC1 0000/03 | | | | 3 PLACES ±0.--- ±.--- | | COMERC1 97/10/06 | | APPROVED BY & DATE | | mm | | mm | | mm | | mm | |
| | | | | 2 PLACES ±0.--- ±.--- | | APPROVED BY & DATE | | FRY 97/10/10 | | mm | | mm | | mm | | mm | |
| | | | | 1 PLACE ±0.--- ±.--- | | CAD FILENAME | | S4351301.DGN | | MATERIAL NO. | | DRAWING NO. | | SHEET NO. | | REV | |
| | | | | ANGULAR: ± 0 | | THIS DRAWING CONTAINS INFORMATION THAT IS PROPRIETARY TO MOLEX INCORPORATED AND SHOULD NOT BE USED WITHOUT WRITTEN PERMISSION. | | 43513-0001 | | SD-43513-001 | | 1 OF 1 | | D | | | |
| B | | REV | | DRAFT WHERE APPLICABLE MUST REMAIN WITHIN DIMENSIONS | | | | | | | | | | | | | |