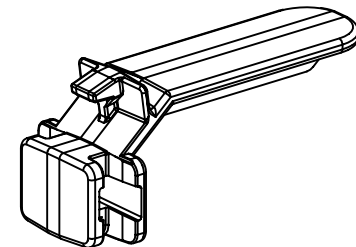
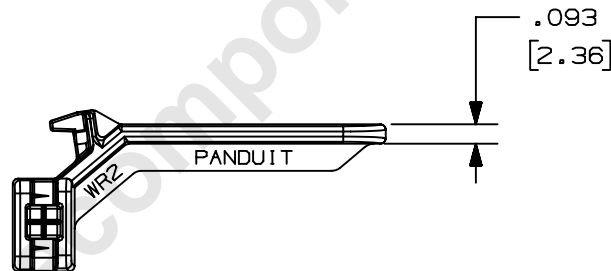
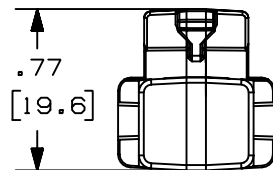
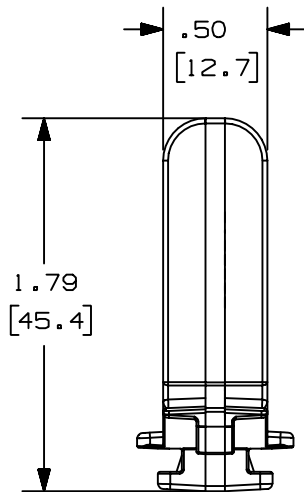


THIS COPY IS PROVIDED ON A RESTRICTED BASIS AND IS NOT TO BE USED IN ANY WAY DETRIMENTAL TO THE INTERESTS OF PANDUIT CORP.



PANDUIT P/N	WEIGHT
WR2	.506 LB/ 100PCS. (230g/ 100PCS.)



#### NOTES:



1. SEE CURRENT CATALOG FOR ADDITIONAL PART SUFFIXES TO INDICATE COLOR AND OR PACKAGE QUANTITY.
2. THIS WIRE RETAINER IS TO BE USED TO RETAIN WIRES IN "G" DUCT SIZES 2" X 1" THRU 2" X 4".
3. DIMENSIONS IN PARENTHESIS ARE METRIC.

CAD FILENAME/LAYERS

D35541DH\_DC\_WR2\_03C.PRT

**PANDUIT**

CORP. TINLEY PARK, ILLINOIS

WIRING DUCT AND CABLE MANAGEMENT  
WIRE RETAINER (WR2)

FOR USE WITH TYPE "G" DUCT - CUSTOMER DRAWING

UNLESS OTHERWISE SPECIFIED,  
DIMENSIONAL TOLERANCES ARE:  
(.X) ± (.XXX) ±  
(.XX) ±.03(.8) ANGLES ±

UNLESS OTHERWISE SPECIFIED,  
ALL DIMENSIONS ARE GIVEN  
IN INCHES, THIRD ANGLE PROJECTION.

2	3/9/04	JCST	JKG	C. CHANGED NOTES B. CHANGED TITLE	35541-60	HIW	HIW		
1	8-29-00	JHNL	HIW	A. REVISED AND REDRAWN.	35541-60	HIW	HIW		
R	3-13-97	RCA	CEF	RELEASED TO PRODUCTION	35541-60	CEF	CEF		
REV	DATE	BY	CHK	DESCRIPTION	ECN	R	CUST	SUP	

DRAWN BY  
RCA

DATE  
3-13-97

CHK'D  
CEF

MAT'L:

ABS

SCALE

NONE

DRAWING NO.

35541-60

DWG  
A  
SIZE