

REVISION V

DO NOT
SCALE FROM
THIS PRINT

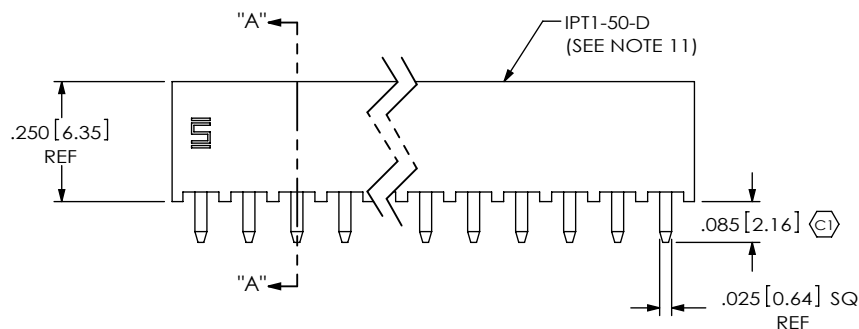
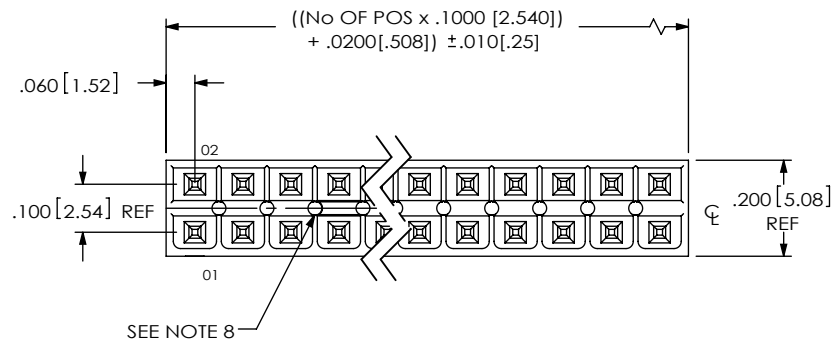


FIG 1
(IPT1-125-01-XX-D-XXX SHOWN)

IPT1-1XX-XX-XX-D-XX

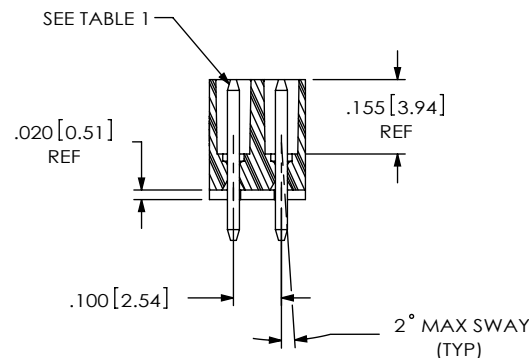
No OF POS PER ROW
-02 THRU -25

LEAD STYLE
SEE TABLE 1, SHEET 2

OPTION
(SEE NOTE 11)
-PL: POSITION #1 REMOVED
(USE IPT1-XX-D-P)
(SEE NOTE 12)
-FL: FRICTION LOCK [POS -05 THRU -25]
(USE IPT1-XX-D-FL-X & T-1S64-XX-X)

ROW SPECIFICATION
(SEE NOTE 11)
-D: DOUBLE (USE IPT1-XX-D-XX-X)

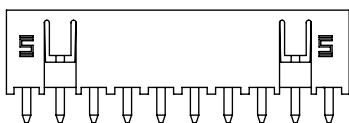
PLATING SPECIFICATION
-S: SELECTIVE, 30 Au / 50 Ni MIN ON CONTACT,
MATTE TIN TAIL
-SM: SELECTIVE, 30 Au / 50 Ni MIN ON CONTACT,
MATTE TIN TAIL
-L: LIGHT SELECTIVE, 10 Au / 50 Ni MIN ON CONTACT,
MATTE TIN TAIL



NOTES: SECTION "A"- "A"

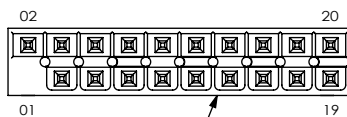
1. C REPRESENTS A CRITICAL DIMENSION.
2. MAXIMUM ALLOWABLE CUT FLASH: .010 [.25].
3. MINIMUM TERMINAL PUSH OUT FORCE: 2 lbs.
4. MAXIMUM VARIATION BETWEEN PIN ROWS: .005 [.13].
5. "END WALLS" AFTER CUTTING SHOULD BE .010+/- .003 [.25+/- .08].
6. PARTS TO BE BULK PACKAGED.
7. ALL DIMENSIONS TO BE ABOUT CENTERLINE WITHIN +/- .005 [.13].
8. PRESENCE OF VOIDS IS OPTIONAL AND PATTERN TO WHICH THEY OCCUR IS VARIABLE.
9. -T PLATING OPTION AVAILABLE FOR EXISTING CUSTOMERS ONLY.
10. NOTE DELETED.
11. STANDARD BODIES CAN BE CUT TO POSITION.
FOR -PL & -FL OPTIONS, BODIES MUST BE MOLDED TO POSITION.
12. FOR EXISTING CUSTOMERS ONLY, -POL CAN BE SUBSTITUTED FOR -PL.

-FL: FRICTION LOCK OPTION
(IPT1-110-01-X-D-FL SHOWN)



T-1S64-06-X

-PL: POLARIZED OPTION
(IPT1-110-01-X-D-PL SHOWN)



IPT1-XX-D-P

UNLESS OTHERWISE SPECIFIED,
DIMENSIONS ARE IN INCHES.
TOLERANCES ARE:
DECIMALS ANGLES
.XX: ± .01 [.3] ± 2°
.XXX: ± .005 [.13]
.XXXX: ± .0020 [.051]

PROPRIETARY NOTE
THIS DOCUMENT CONTAINS CONFIDENTIAL AND
PROPRIETARY INFORMATION AND ALL DESIGN,
MANUFACTURING, REPRODUCTION, USE, PATENT RIGHTS
AND SALES RIGHTS ARE EXPRESSLY RESERVED BY SAMTEC,
INC. THIS DOCUMENT SHALL NOT BE DISCLOSED, IN WHOLE
OR PART, TO ANY UNAUTHORIZED PERSON OR ENTITY NOR
REPRODUCED, TRANSFERRED OR INCORPORATED IN ANY
OTHER PROJECT IN ANY MANNER WITHOUT THE EXPRESS
WRITTEN CONSENT OF SAMTEC, INC.

MATERIAL: DO NOT SCALE DRAWING
INSULATOR: LCP, UL 94 VO, COLOR: BLACK
CONTACT: PHOS BRONZE, 510, 3/4 HARD

F:\DWG\WISC\WKTG\IPT1-1XX-XX-XX-D-XX-MKT.SLDDRW

samtec

520 PARK EAST BLVD, NEW ALBANY, IN 47150
PHONE: 812-944-6733 FAX: 812-948-5047
e-Mail: info@SAMTEC.com code 55322

DESCRIPTION:
.100 DOUBLE ROW SHROUDED TERMINAL ASSEMBLY

DWG. NO.
IPT1-1XX-XX-XX-D-XX

BY: DEAN P 11-05-2002 SHEET 1 OF 2

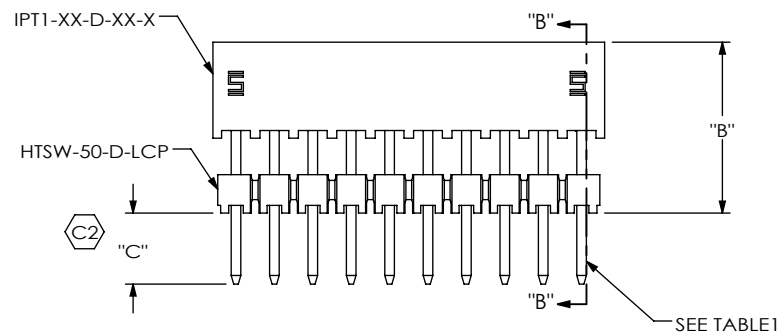


FIG 2
(IPT1-1 10-02-XX-D-XXX SHOWN)

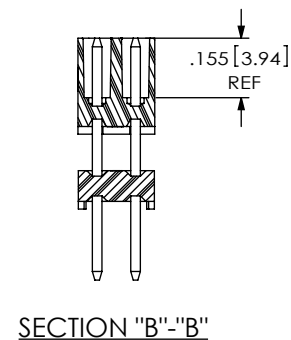



TABLE 1		BOARD STACK HEIGHT WHEN MATED WITH IPS1	TERMINAL	"C"
LEADSTYLE	"B"			
-01	N/A	N/A	T-1S6-21-X-2	
-02	.366[9.30]	.551[14.00]	T-1S6-26-X-2	.104[2.64]
-03	.445[11.30]	.630[16.00]	T-1S6-08-X-2	.085[2.16]
-04	.484[12.30]	.669[17.00]	T-1S6-24-X-2	.106[2.69]
-05	.563[14.30]	.748[19.00]	T-1S6-27-X-2	.097[2.46]
-06	.602[15.30]	.787[20.00]	T-1S6-23-X-2	.093[2.35]
-07	.799[20.30]	.984[25.00]	T-1S6-28-X-2	.091[2.31]
-08	.996[25.30]	1.181[30.00]	T-1S6-29-X-2	.094[2.39]
-09	1.193[30.30]	1.378[35.00]	T-1S6-30-X-2	.097[2.46]

<p>* PROPRIETARY NOTE *</p> <p>THIS DOCUMENT CONTAINS CONFIDENTIAL AND PROPRIETARY INFORMATION AND ALL DESIGN, MANUFACTURING, REPRODUCTION, USE, PATENT RIGHTS AND SALES RIGHTS ARE EXPRESSLY RESERVED BY SAMTEC, INC. THIS DOCUMENT SHALL NOT BE DISCLOSED, IN WHOLE OR PART, TO ANY UNAUTHORIZED PERSON OR ENTITY NOR REPRODUCED, TRANSFERRED OR INCORPORATED IN ANY OTHER PROJECT IN ANY MANNER WITHOUT THE EXPRESS WRITTEN CONSENT OF SAMTEC, INC.</p> <p>DO NOT SCALE DRAWING</p> <p>SHEET SCALE: 2:1</p>	 <p>520 PARK EAST BLVD, NEW ALBANY, IN 47150 PHONE: 812-944-6733 FAX: 812-948-5047 e-Mail info@SAMTEC.com code 55322</p>	
	DESCRIPTION: .100 DOUBLE ROW SHROUDED TERMINAL ASSEMBLY	
	DWG. NO. IPT1-1XX-XX-XX-D-XX	
	BY: DEAN P	11-05-2002
		SHEET 2 OF 2