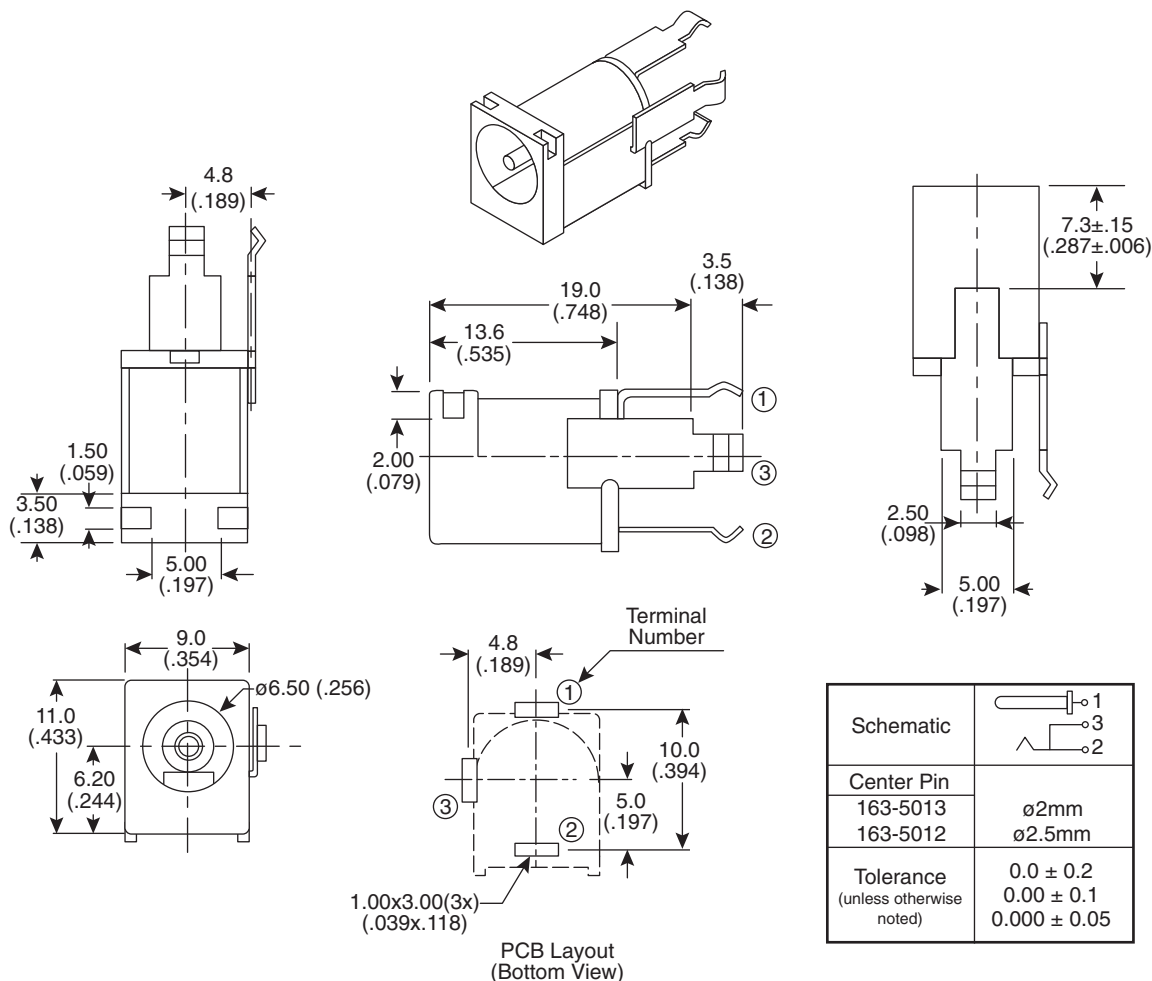


# Jacks

163-5012, 163-5013

KOBI CONN

Jacks



DIMENSIONS: mm (in.)

## SPECIFICATIONS

|                        |   |
|------------------------|---|
| Type:                  | PC mount DC power, DIP  |
| Contact resistance:    | Normally closed terminals shall not exceed 0.03 $\Omega$ when measured at a current of one Ampere by Voltage drop method.   |
| Insulation resistance: | Adjacent open terminals shall not be less than 50M $\Omega$ when measured w/ 500V resistance meter  |
| Connector:             | Withstands 500VRMS between adjacent open terminal for 1 minute. Shall Withstand 5,000 cycles of insertions and withdrawal with testing plug, contact resistance shall not exceed 0.1 $\Omega$ |
| Rated voltage:         | 16V DC max.   |
| Rated current:         | 2.5 A   |

## MATERIALS

|             |              |
|-------------|--------------|
| Center Pin: | Copper       |
| Terminal 1: | Brass        |
| Terminal 2: | Copper Alloy |
| Terminal 3: | Brass        |
| Housing:    | PBT          |
| Cover:      | PBT          |

Date Last Revised: 3-25-10

Available from Mouser Electronics  
1-800-346-6873 / [www.mouser.com](http://www.mouser.com)

KC-300386

Specifications are subject to change without notice. No liability or warranty implied by this information. Environmental compliance based on producer documentation.

163-5012, 163-5013

# Mouser Electronics

Authorized Distributor

Click to View Pricing, Inventory, Delivery & Lifecycle Information:

[Kobiconn:](#)

[163-5013](#) [163-5012](#)