

Industry Standard Compact PCI Power Supplies

Features

- ◆ AC or DC input versions in same package size
- ◆ Universal Range Input Voltage with PFC
- ◆ Hot swap capable power supplies
- ◆ Active current share for paralleling power supplies
- ◆ P47 Connector for use in PICMG 2.11 compatible systems
- ◆ High Quality Components
- ◆ High Efficiency



Specifications

Model		CPCI175P47				CPCI175HP47				CPCI175MP47				
		V1	V2	V3	V4	V1	V2	V3	V4	V1	V2	V3	V4	
Output Voltage	(2)	V	+5	+3.3	+12	-12	+5	+3.3	+12	-12	+5	+3.3	+12	-12
Minimum load		A	2	0	0	0	2	0	0	0	2	0	0	0
Output Current with air	(1)	A	25	25	3	1	25	25	3	1	25	25	3	1
Maximum Power		W	175				175				175			
Efficiency (typical)		-	75% @ 240VAC, 75% @ 48VDC, 72% @ 24VDC											
Input Voltage		V	90-264VAC (47-63Hz)				36-72VDC				18-36VDC			
Connector		-	P47 Style											
Inrush Current		A	<40											
Hold up Time, AC Input Only		ms	>16											
Rise time		-	<500ms from AC power up. All output voltages come up within 10 ms of ea. other											
Output Power (maximum)		-	175W, Combined current on +5 & +3.3V outputs not to exceed 27A.											
Output Voltage Adjustment		-	±10% on 5V & 3.3V using pins 29 & 32											
Remote Sense		-	5 & 3.3V outputs											
Load Regulation		-	+5V: ±1%; +3.3V, +12V & -12V: ±3% (10% - 100% load)											
Line Regulation		-	±0.3%											
EMI		-	EN55022 Class A Radiated and Conducted											
Overvoltage protection		-	120% of nominal, recycle AC to reset											
Operating Temperature Range		-	Full power from 0°C-40°C w/ 15 CFM forced air flow, derate linearly to 50% load at 70°C Shutdown when internal heatsink temperature reaches 95°C, automatic recovery.											
Over Current Protection		-	All outputs protected against overload and short circuit.											
Indicators		-	Green LED indicating Input O.K. Red LED indicating power supply fault.											
Safety Agency Approvals		-	UL1950, CSA C22.2 No. 950, EN60950, CE Mark											
Size and Weight		-	3U, 8HP; 0.85kg											

1: Combined current on +5 & +3.3V outputs not to exceed 27A @ 15 CFM

2: Remote adjustable ±10% sing appropriate VADJ pins. Pull to + output for -10%, - output for +10

OBSOLETE

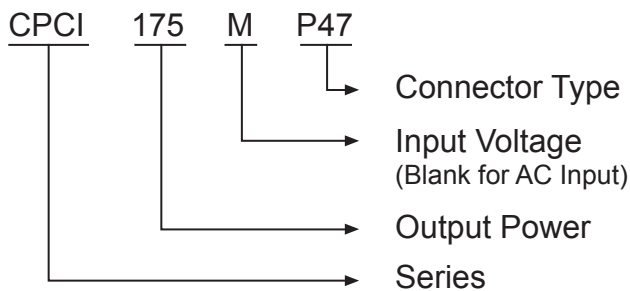
CPCI Pinouts

Pin	Designation	Pin	Designation
1	+5V	25	GA 0
2	+5V	26	Not Used
3	+5V	27*	Enable
4	+5V	28	GA 1
5	5V & 3.3V RTN	29	5V ADJ
6	5V & 3.3V RTN	30	+5V Sense
7	5V & 3.3V RTN	31	GA 2
8	5V & 3.3V RTN	32	3.3V ADJ
9	5V & 3.3V RTN	33	+3.3V Sense
10	5V & 3.3V RTN	34	Sense Return
11	5V & 3.3V RTN	35	5V Share
12	5V & 3.3V RTN	36	Not Used
13	+3.3V	37	Not Used
14	+3.3V	38	DEG#
15	+3.3V	39	Inhibit
16	+3.3V	40	Not Used
17	+3.3V	41	3.3V Share
18	+3.3V	42	Fail#
19	+12V RTN	43	Not Used
20	+12V	44	Not Used
21	-12V	45**	Safety Ground
22	Signal RTN	46	AC Neutral / +DC In
23	Not Used	47	AC Line / -DC In
24	-12V RTN		

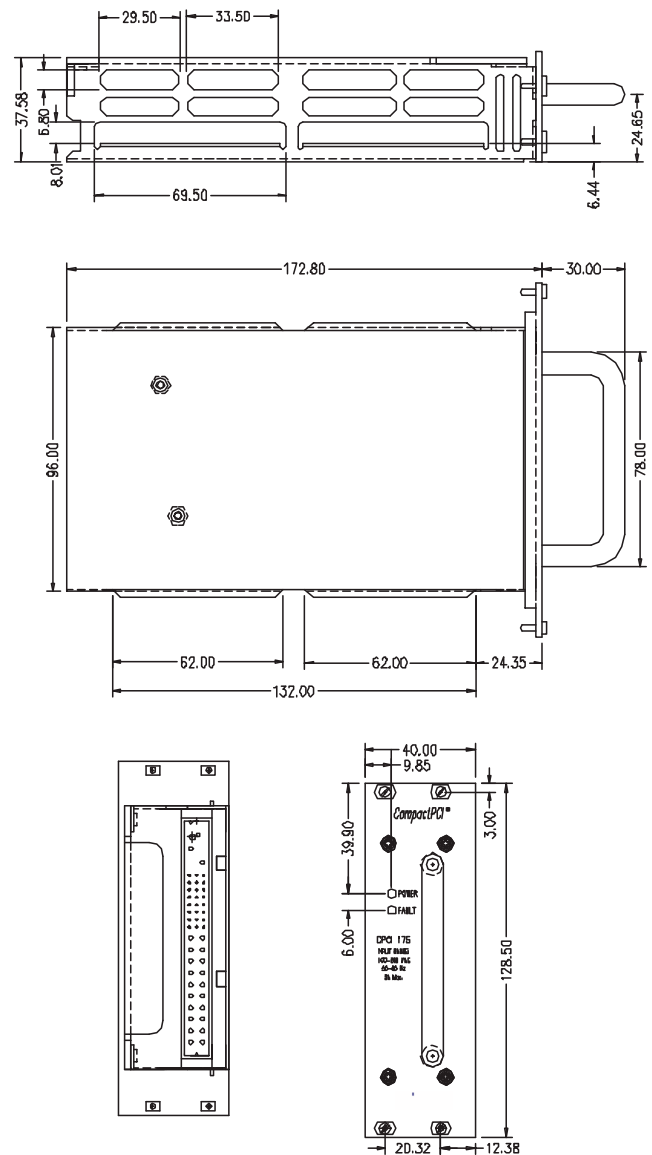
* Pin 27 is a last mate, first break pin.

** Pin 45 is a first mate, last break pin.

CPCI Series Model Number Example



Outline Drawing



For Additional Information, please visit
us.tdk-lambda.com/lp/products/compact-pci-ac.htm



OBSOLETE