

## Evaluation Board User's Manual for High Frequency TSSOP 20



ON Semiconductor®

<http://onsemi.com>

### EVAL BOARD USER'S MANUAL

#### INTRODUCTION

ON Semiconductor has developed an evaluation board for the devices in 20-lead TSSOP package. These evaluation boards are offered as a convenience for the customers interested in performing their own engineering assessment on the general performance of the 20-lead TSSOP device samples. The board provides a high bandwidth 50  $\Omega$  controlled impedance environment. Figures 1 and 2 show the top and bottom view of the evaluation board, which can be configured in several different ways, depending on device under test (see Table 1. Configuration List).

This evaluation board manual contains:

- Information on 20-lead TSSOP Evaluation Board
- Assembly Instructions
- Appropriate Lab Setup
- Bill of Materials

This manual should be used in conjunction with the device data sheet, which contains full technical details on the device specifications and operation.

#### Board Lay-Up

The 20-lead TSSOP evaluation board is implemented in four layers with split (dual) power supplies (see Figure 3. Evaluation Board Lay-Up). For standard ECL lab setup and test, a split (dual) power supply is essential to enable the 50  $\Omega$  internal impedance in the oscilloscope as a termination for ECL devices. The first layer or primary trace layer is 0.008" thick Rogers RO4003 material, which is designed to have equal electrical length on all signal traces from the device under the test (DUT) to the sense output. The second layer is the 1.0 oz copper ground. The FR4 dielectric material is placed between second and third layer and between third and fourth layer. The third layer is the power plane ( $V_{CC}$  &  $V_{EE}$ ) and a portion of this layer is a ground plane. The fourth layer is the secondary trace layer.

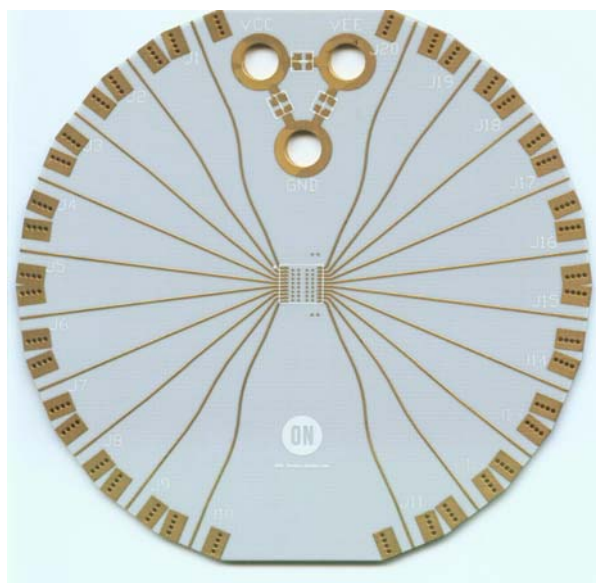
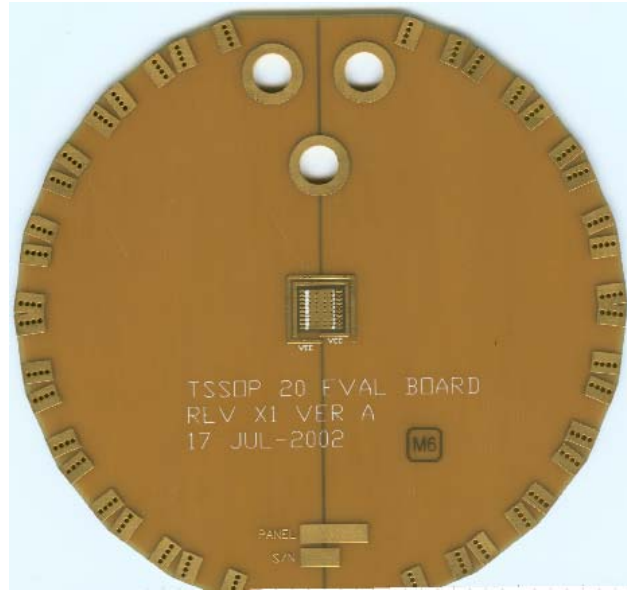
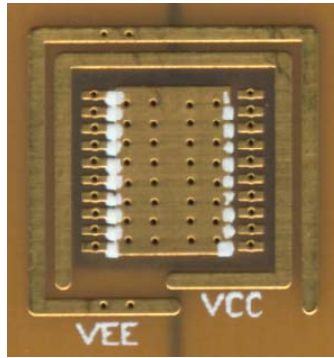


Figure 1. Top View of the 20-lead TSSOP Evaluation Board

## ECLTSSOP20EVB

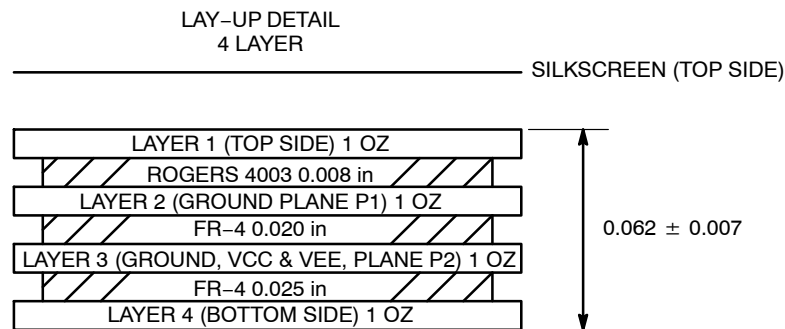


Bottom View



Expanded Bottom View

**Figure 2. Bottom View of the 20-lead TSSOP Evaluation Board**



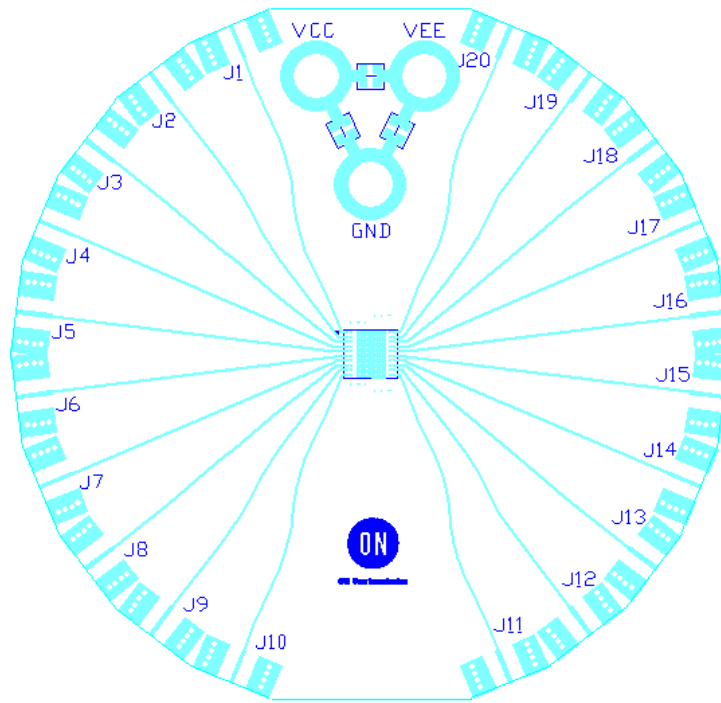
**Figure 3. Evaluation Board Lay-up**

### Board Layout

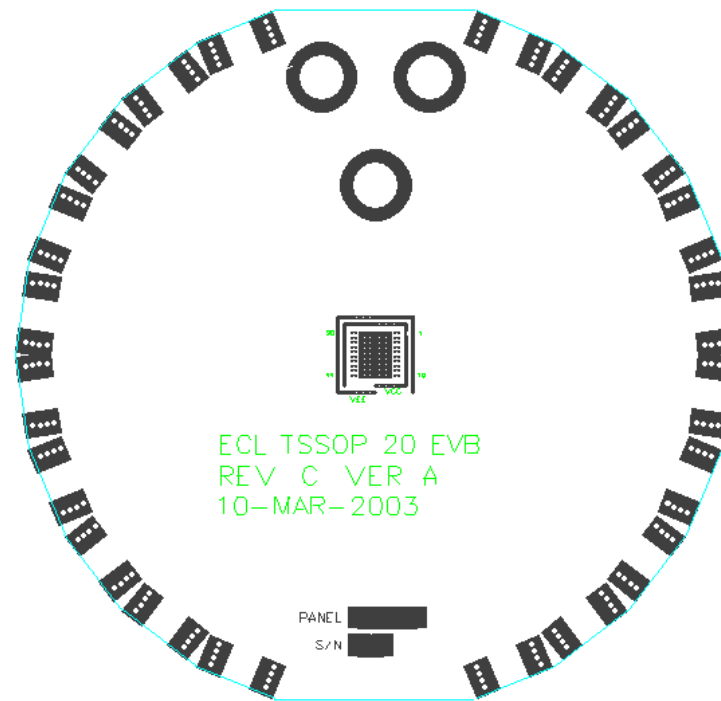
The 20-lead TSSOP evaluation board was designed to be versatile and accommodate several different configurations. The input, output, and power pin layout of the evaluation board is shown in Figures 4 and 5. The evaluation board has at least eight possible configurable options. Table 1, list the devices and the relevant configuration that utilizes this PCB

board. Lists of components and simple schematics are located in Figures 6 through 12. Place SMA connectors on J1 through J20, 50  $\Omega$  chip resistors between ground pad and Pin 1 pad through Pin 20 pad, and chip capacitors C1 through C5 according to configuration figures. (C4 and C5 are 0.01  $\mu$ F and C1, C2, and C3 are 0.1  $\mu$ F); (See Figure 5).

## ECLTSSOP20EVB



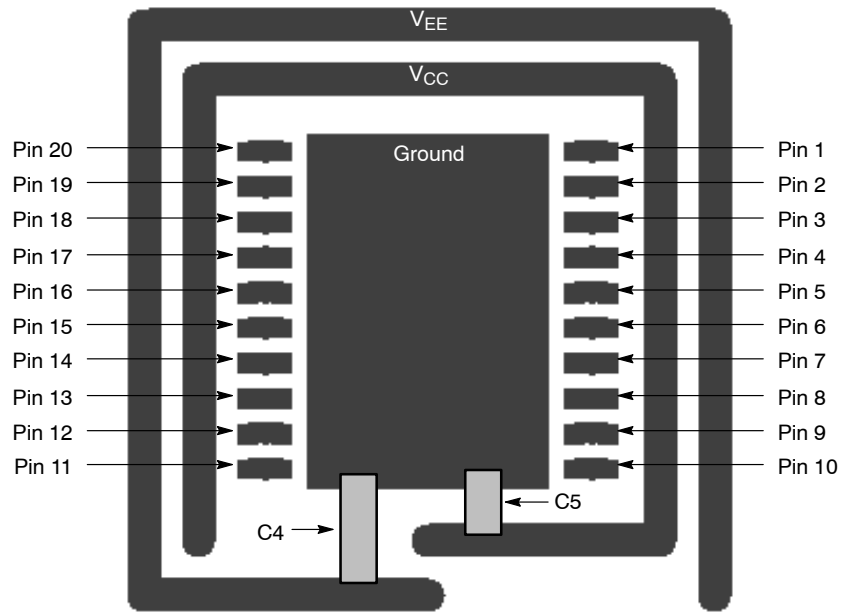
Top View



Bottom View

Figure 4. Evaluation Board Layout

# ECLTSSOP20EVB



**Figure 5. Enlarged Bottom View of the Evaluation Board**

**Table 1. Configuration List**

Configuration	Comments	Device
1	See Figure 6	EP14, LVEP14
2	See Figure 7	EP17, LVEP17
3	See Figure 8	EP29
4	See Figure 9	EP40
5	See Figure 10	EP56, LVEP56
6	See Figure 11	EP57
7	See Figure 12	EP139

### Evaluation Board Assembly Instructions

The 20-lead TSSOP evaluation board is designed for characterizing devices in a 50  $\Omega$  laboratory environment using high bandwidth equipment. Each signal trace on the board has a via, which has an option of placing a termination resistor depending on the input/output configuration (see Table 1, Configuration List). Table 11 contains the Bill of Materials for this evaluation board.

### Solder the Device on the Evaluation Board

The soldering can be accomplished by hand soldering or soldering re-flow techniques. Make sure pin 1 of the device is located next to the white dotted mark and all the pins are aligned to the footprint pads. Solder the 20-lead TSSOP device to the evaluation board.

### Connecting Power and Ground Planes

For standard ECL lab setup and test, a split (dual) power supply is required enabling the 50  $\Omega$  internal impedance in the oscilloscope to be used as a termination of the ECL signals ( $V_{TT} = V_{CC} - 2.0$  V, in split power supply setup,  $V_{TT}$  is the system ground,  $V_{CC}$  is 2.0 V, and  $V_{EE}$  is  $-3.0$  V or  $-1.3$  V; see Table 2, Power Supply Levels).

**Table 2. Power Supply Levels**

Power Supply	$V_{CC}$	$V_{EE}$	GND
5.0 V	2.0 V	$-3.0$ V	0.0 V
3.3 V	2.0 V	$-1.3$ V	0.0 V
2.5 V	2.0 V	$-0.5$ V	0.0 V

Connect three banana jack sockets to  $V_{CC}$ ,  $V_{EE}$ , and GND labeled holes. Wire bond the appropriate device pin pad on the bottom side of the board to  $V_{CC}$  and  $V_{EE}$  power stripes. (Device specific, please see configuration for each desired device. See Figure 5)

It is recommended to solder 0.01  $\mu$ F capacitors to C4 and C5 to reduce the unwanted noise from the power supplies. C1, C2, and C3 pads are provided for 0.1  $\mu$ F capacitor to further diminish the noise from the power supplies. Adding capacitors can improve edge rates, reduce overshoot and undershoot.

### Termination

All ECL outputs need to be terminated to  $V_{TT}$  ( $V_{TT} = V_{CC} - 2.0$  V = GND) via a 50  $\Omega$  resistor. 0402 chip resistor pads are provided on the bottom side of the evaluation board to terminate the ECL driver (More information on termination is provided in AN8020). Solder the chip resistors to the bottom side of the board between the appropriate input of the device pin pads and the ground pads. For ease of assembly, it is advised to place and solder termination resistors on its vertical (side) position, instead of its original or flat position.

### Installing the SMA Connectors

Each configuration indicates the number of SMA connectors needed to populate an evaluation board for a given configuration. Each input and output requires one SMA connector. Attach all the required SMA connectors onto the board and solder the connectors to the board on J1 through J20. Please note that alignment of the signal connector pin of the SMA can influence the lab results. The reflection and launch of the signals are largely influenced by imperfect alignment and soldering of the SMA connector.

### Validating the Assembled Board

After assembling the evaluation board, it is recommended to perform continuity checks on all soldered areas before commencing with the evaluation process. Time Domain Reflectometry (TDR) is another highly recommended validation test.

# ECLTSSOP20EVB

## CONFIGURATIONS

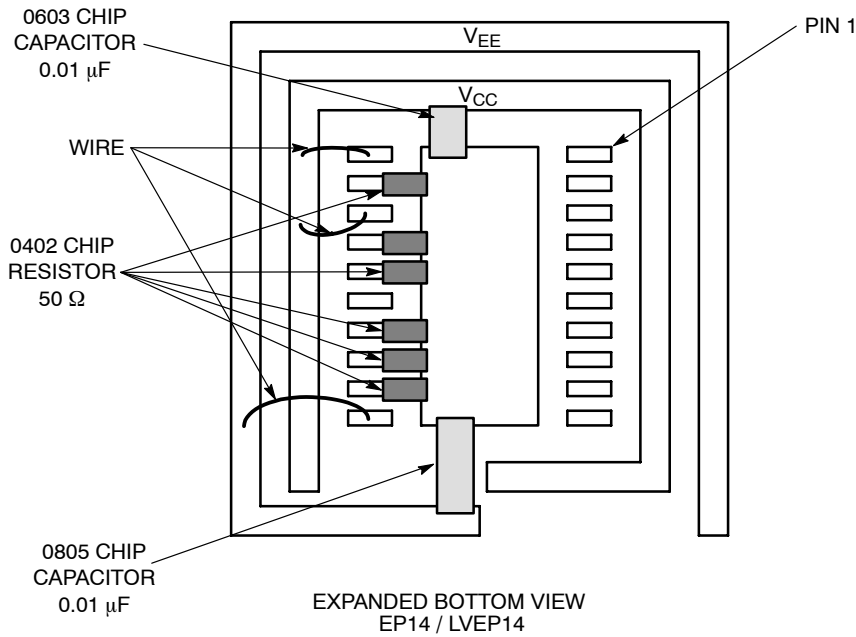
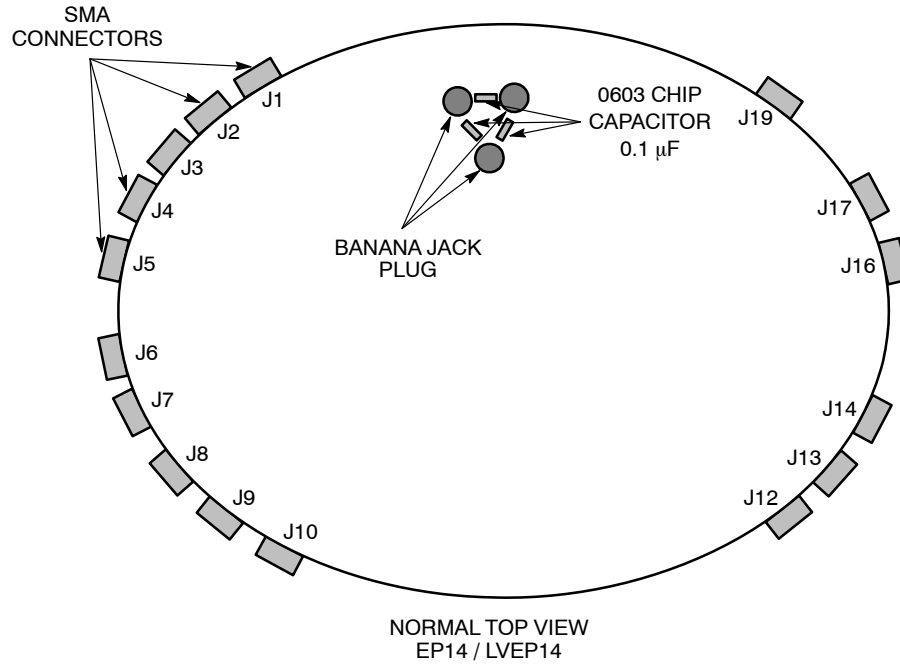
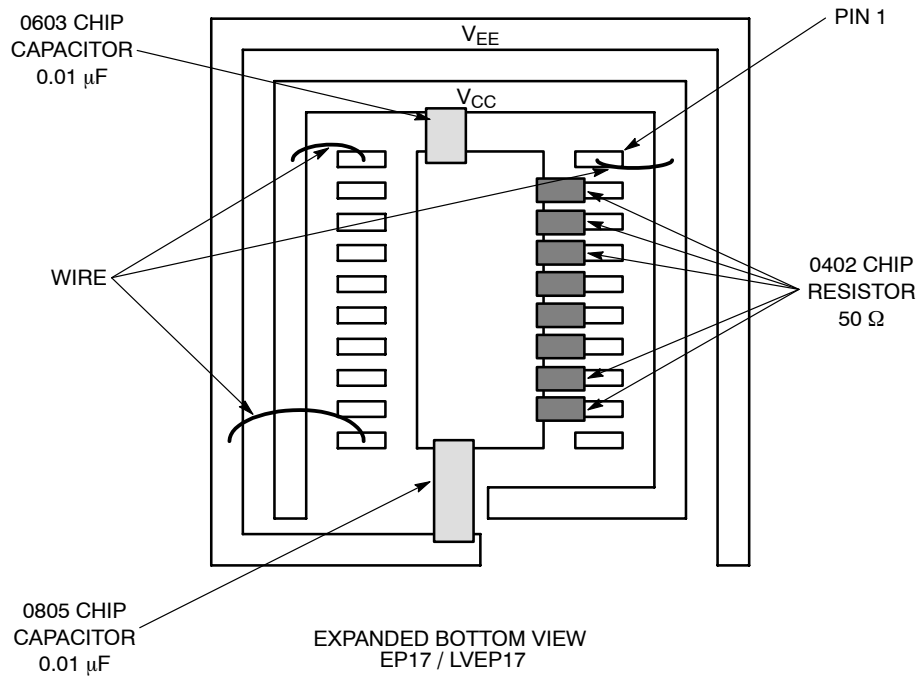
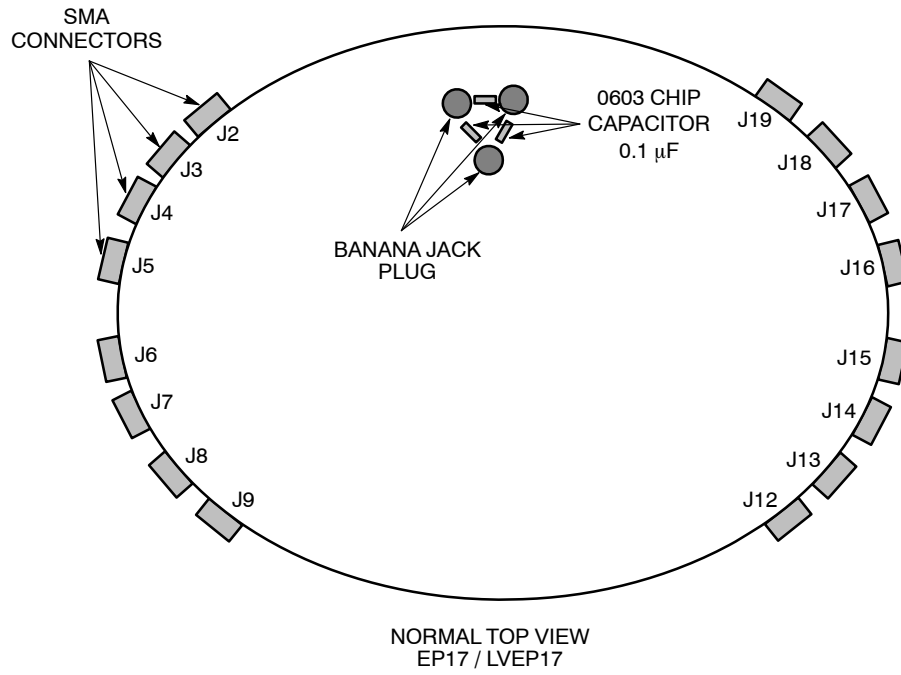


Figure 6. Configuration 1

Table 3. Configuration 1 (Device EP14 and LVEP14)

Device	J1	J2	J3	J4	J5	J6	J7	J8	J9	J10	J11	J12	J13	J14	J15	J16	J17	J18	J19	J20
Pin #	1	2	3	4	5	6	7	8	9	10	11	12	13	14	15	16	17	18	19	20
Connector	Yes	Yes	Yes	Yes	Yes	Yes	Yes	Yes	Yes	Yes	No	Yes	Yes	Yes	Yes	Yes	Yes	No	Yes	No
Resistor	No	No	No	No	No	No	No	No	No	No	No	Yes	Yes	Yes	No	Yes	Yes	No	Yes	No
Power	No	No	No	No	No	No	No	No	No	No	V <sub>EE</sub>	No	No	No	No	No	No	V <sub>CC</sub>	No	V <sub>CC</sub>

# ECLTSSOP20EVB

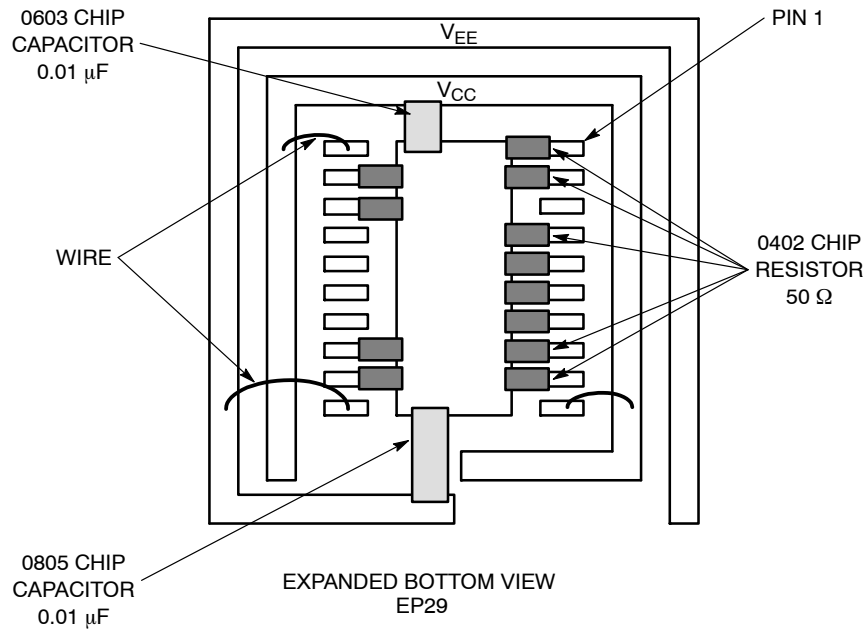
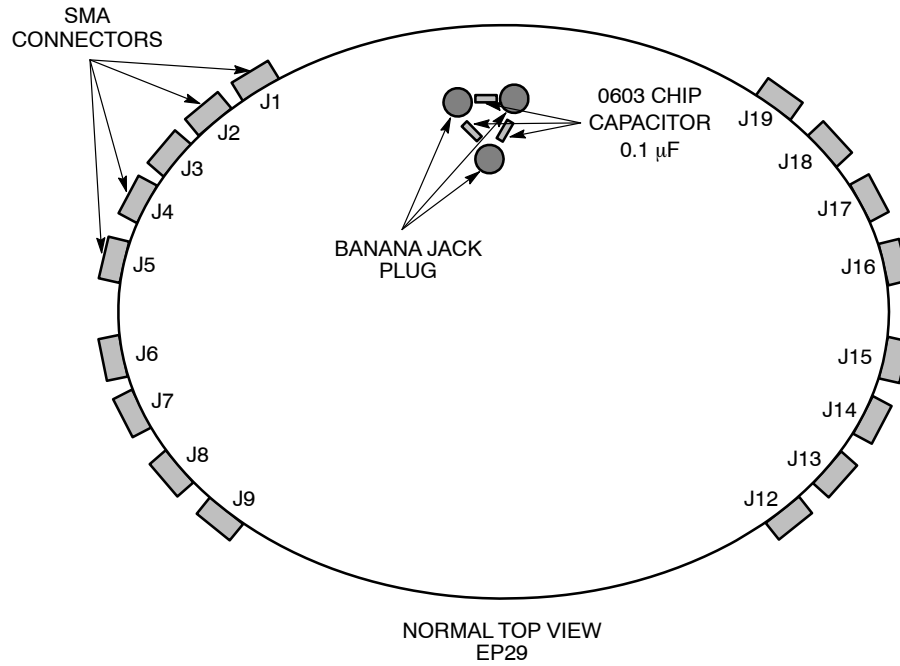


**Figure 7. Configuration 2**

**Table 4. Configuration 2 (Device EP17 and LVEP17)**

Device	J1	J2	J3	J4	J5	J6	J7	J8	J9	J10	J11	J12	J13	J14	J15	J16	J17	J18	J19	J20
Pin #	1	2	3	4	5	6	7	8	9	10	11	12	13	14	15	16	17	18	19	20
Connector	No	Yes	Yes	Yes	Yes	Yes	Yes	Yes	Yes	Yes	No	Yes	Yes	Yes	Yes	Yes	Yes	Yes	Yes	No
Resistor	No	Yes	Yes	Yes	Yes	Yes	Yes	Yes	Yes	No	No	No	No	No	No	No	No	No	No	No
Power	V <sub>CC</sub>	No	No	No	No	No	No	No	No	No	V <sub>EE</sub>	No	No	No	No	No	No	No	No	V <sub>CC</sub>

# ECLTSSOP20EVB



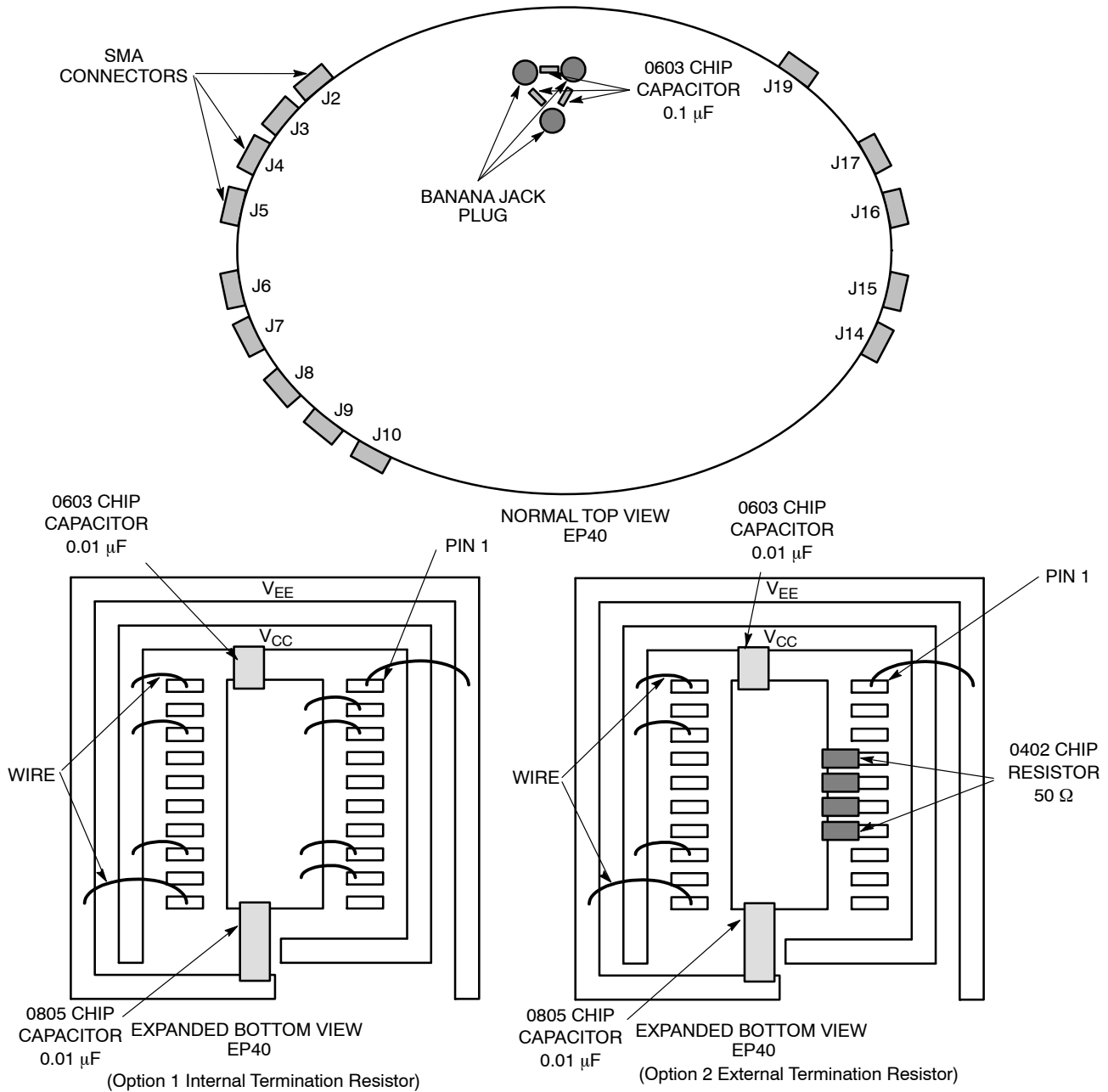
**Figure 8. Configuration 3**

**Table 5. Configuration 3 (Device EP29)**

Device	J1	J2	J3	J4	J5	J6	J7	J8	J9	J10	J11	J12	J13	J14	J15	J16	J17	J18	J19	J20
Pin #	1	2	3	4	5	6	7	8	9	10	11	12	13	14	15	16	17	18	19	20
Connector	Yes	Yes	Yes	Yes	Yes	Yes	Yes	Yes	Yes	No	No	Yes	Yes	Yes	Yes	Yes	Yes	Yes	Yes	No
Resistor	Yes	No	Yes	Yes	Yes	Yes	Yes	Yes	Yes	No	No	Yes	Yes	No	No	No	No	Yes	Yes	No
Power	No	No	No	No	No	No	No	No	No	V <sub>CC</sub>	V <sub>EE</sub>	No	No	No	No	No	No	No	No	V <sub>CC</sub>



# ECLTSSOP20EVB

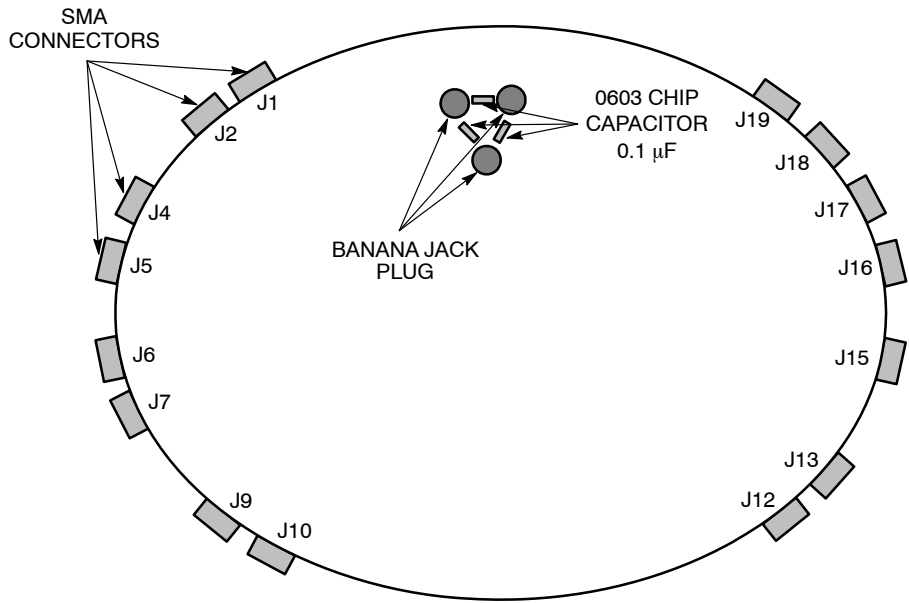


**Figure 9. Configuration 4**

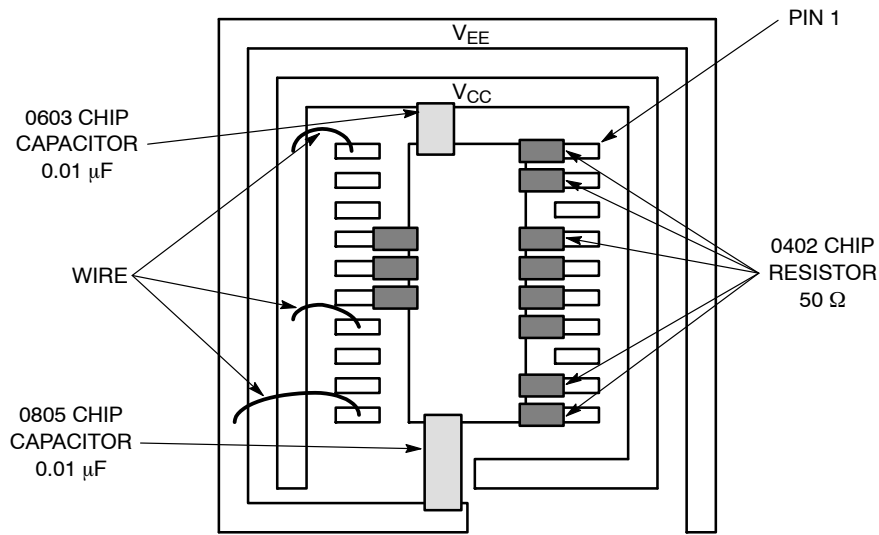
**Table 6. Configuration 4 (Device EP40) (Options 1 & 2)**

Device	J1	J2	J3	J4	J5	J6	J7	J8	J9	J10	J11	J12	J13	J14	J15	J16	J17	J18	J19	J20
Pin #	1	2	3	4	5	6	7	8	9	10	11	12	13	14	15	16	17	18	19	20
Option 1 Internal Termination Resistor Configuration																				
Connector	No	Yes	Yes	Yes	Yes	Yes	Yes	Yes	Yes	Yes	No	No	No	Yes	Yes	Yes	Yes	No	Yes	No
Resistor	No	No	No	No	No	No	No	No	No	No	No	No	No	No	No	No	No	No	No	No
Power	V <sub>EE</sub>	Gnd	Gnd	No	No	No	No	Gnd	Gnd	No	V <sub>EE</sub>	No	V <sub>CC</sub>	No	No	No	No	V <sub>CC</sub>	No	V <sub>CC</sub>
Option 2 External Termination Resistor Configuration																				
Connector	No	Yes	Yes	Yes	Yes	Yes	Yes	Yes	Yes	Yes	No	No	No	Yes	Yes	Yes	Yes	No	Yes	No
Resistor	No	No	No	Yes	Yes	Yes	Yes	No	No	No	No	No	No	No	No	No	No	No	No	No
Power	V <sub>EE</sub>	No	No	No	No	No	No	No	No	No	V <sub>EE</sub>	No	V <sub>CC</sub>	No	No	No	No	V <sub>CC</sub>	No	V <sub>CC</sub>

# ECLTSSOP20EVB



NORMAL TOP VIEW  
EP56 / LVEP56



EXPANDED BOTTOM VIEW  
EP56 / LVEP56

Figure 10. Configuration 5

Table 7. Configuration 5 (Device EP56 and LVEP56)

Device	J1	J2	J3	J4	J5	J6	J7	J8	J9	J10	J11	J12	J13	J14	J15	J16	J17	J18	J19	J20
Pin #	1	2	3	4	5	6	7	8	9	10	11	12	13	14	15	16	17	18	19	20
Connector	Yes	Yes	Yes	Yes	Yes	Yes	Yes	Yes	Yes	Yes	No	Yes	Yes	No	Yes	Yes	Yes	Yes	Yes	No
Resistor	Yes	Yes	No	Yes	Yes	Yes	Yes	No	Yes	Yes	No	No	No	No	Yes	Yes	Yes	No	No	No
Power	No	No	No	No	No	No	No	No	No	No	V <sub>EE</sub>	No	No	V <sub>CC</sub>	No	No	No	No	No	V <sub>CC</sub>

# ECLTSSOP20EVB

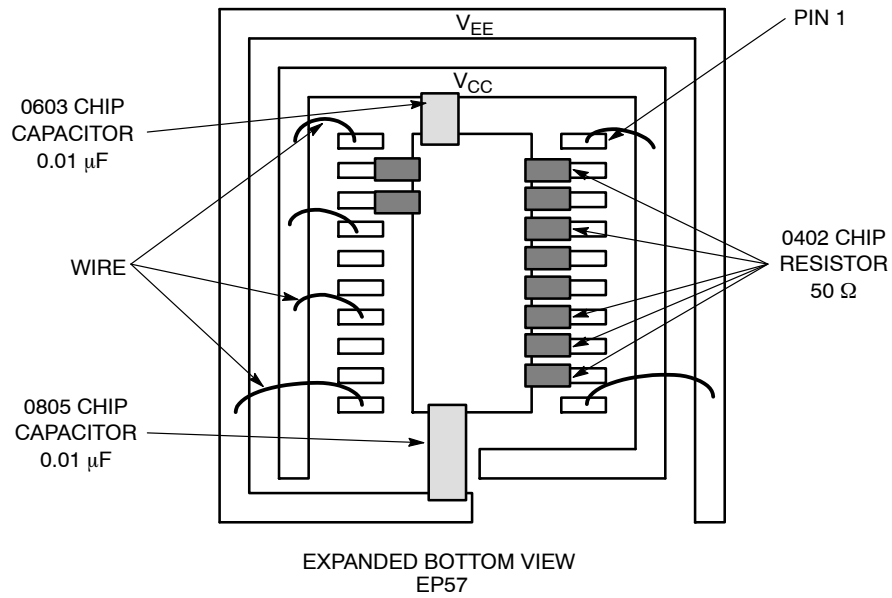
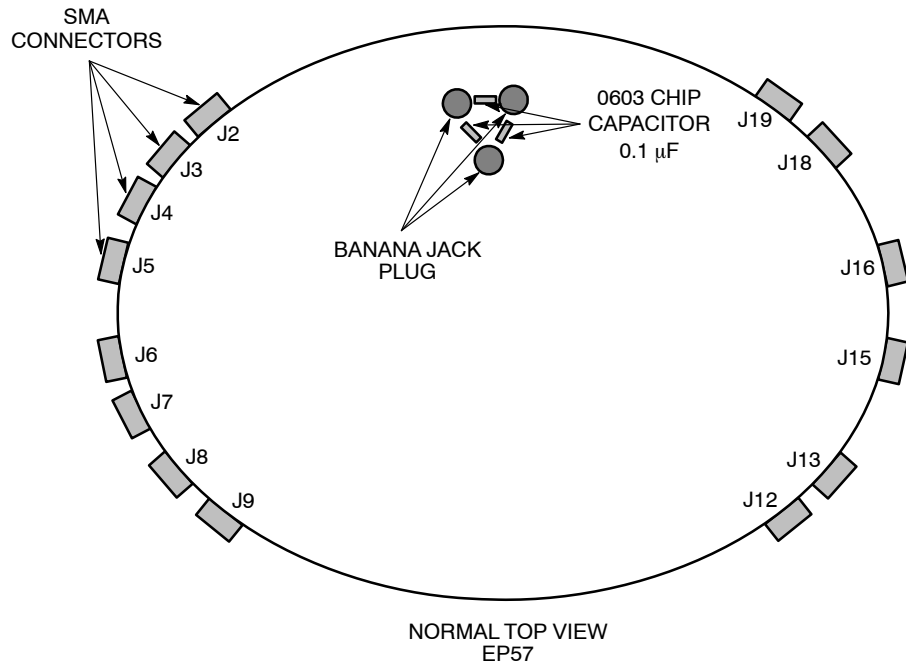


Figure 11. Configuration 6

Table 8. Configuration 6 (Device EP57)

Device	J1	J2	J3	J4	J5	J6	J7	J8	J9	J10	J11	J12	J13	J14	J15	J16	J17	J18	J19	J20
Pin #	1	2	3	4	5	6	7	8	9	10	11	12	13	14	15	16	17	18	19	20
Connector	No	Yes	Yes	Yes	Yes	Yes	Yes	Yes	Yes	No	No	Yes	Yes	No	Yes	Yes	No	Yes	Yes	No
Resistor	No	Yes	Yes	Yes	Yes	Yes	Yes	Yes	Yes	No	No	No	No	No	No	No	No	Yes	Yes	No
Power	$V_{CC}$	No	No	No	No	No	No	No	No	$V_{EE}$	$V_{EE}$	No	No	$V_{CC}$	No	No	$V_{CC}$	No	No	$V_{CC}$

ECLTSSOP20EVB

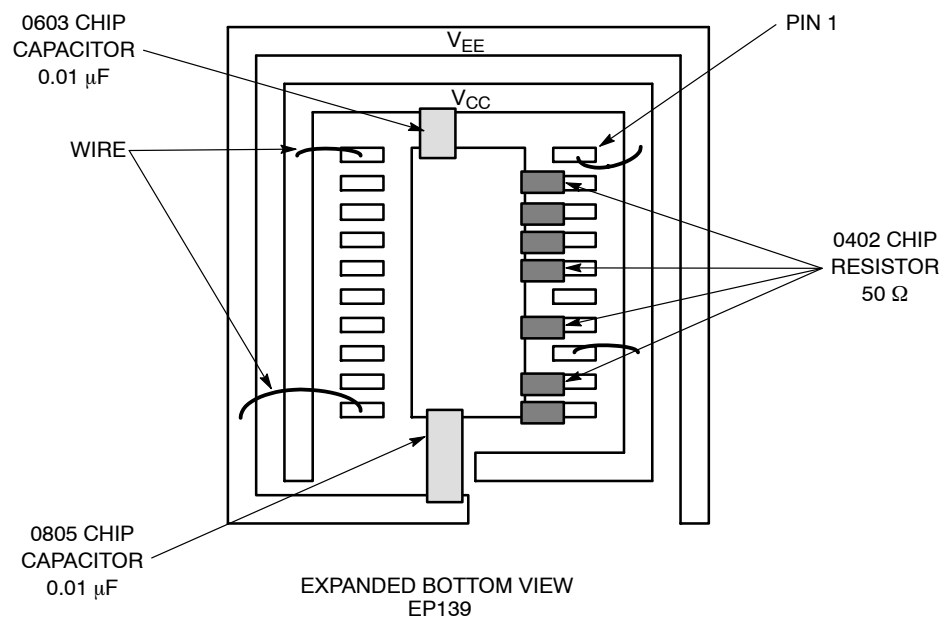
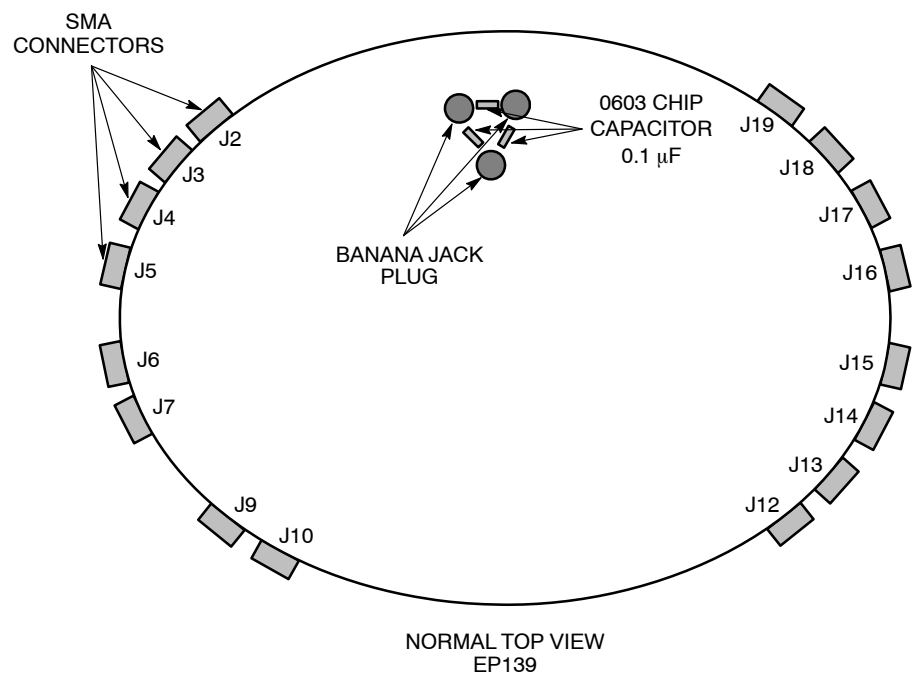
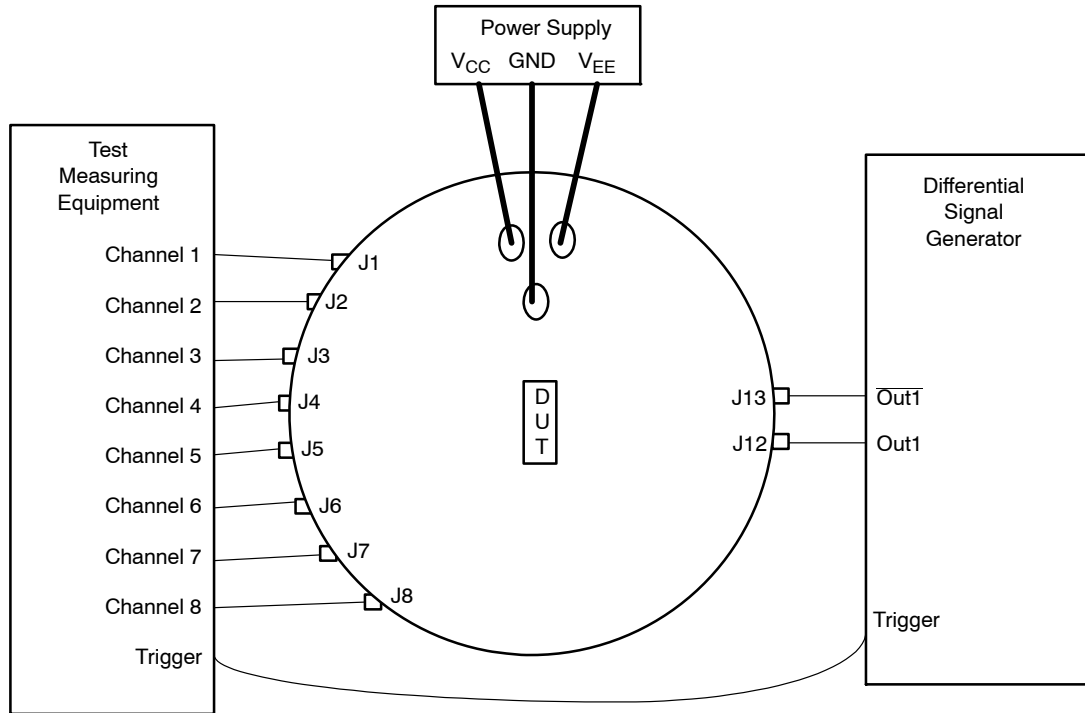


Figure 12. Configuration 7

Table 9. Configuration 7 (Device EP139)

Device	J1	J2	J3	J4	J5	J6	J7	J8	J9	J10	J11	J12	J13	J14	J15	J16	J17	J18	J19	J20
Pin #	1	2	3	4	5	6	7	8	9	10	11	12	13	14	15	16	17	18	19	20
Connector	No	Yes	Yes	Yes	Yes	Yes	Yes	No	Yes	Yes	No	Yes	Yes	Yes	Yes	Yes	Yes	Yes	Yes	No
Resistor	No	Yes	Yes	Yes	Yes	No	Yes	No	Yes	Yes	No	No	No	No	No	No	No	No	No	No
Power	V <sub>CC</sub>	No	No	No	No	No	No	V <sub>CC</sub>	No	No	V <sub>EE</sub>	No	No	No	No	No	No	No	No	V <sub>CC</sub>

## LAB SETUP



**Figure 13. Example of Standard Lab Setup (Configuration 1)**

1. Connect appropriate power supplies to  $V_{CC}$ ,  $V_{EE}$ , and GND.  
For standard ECL lab setup and test, a split (dual) power supply is required enabling the  $50\ \Omega$  internal impedance in the oscilloscope to be used as a termination of the ECL signals ( $V_{TT} = V_{CC} - 2.0\text{ V}$ , in split power supply setup,  $V_{TT}$  is the system ground,  $V_{CC}$  is 2.0 V, and  $V_{EE}$  is  $-3.0\text{ V}$  or  $-1.3\text{ V}$ ; see Table 10).

2. Connect a signal generator to the input SMA connectors. Setup input signal according to the device data sheet.
3. Connect a test measurement device on the device output SMA connectors.

NOTE: The test measurement device must contain  $50\ \Omega$  termination.

**Table 10. Power Supply Levels**

Power Supply	$V_{CC}$	$V_{EE}$	GND
5.0 V	2.0 V	$-3.0\text{ V}$	0.0 V
3.3 V	2.0 V	$-1.3\text{ V}$	0.0 V
2.5 V	2.0 V	$-0.5\text{ V}$	0.0 V

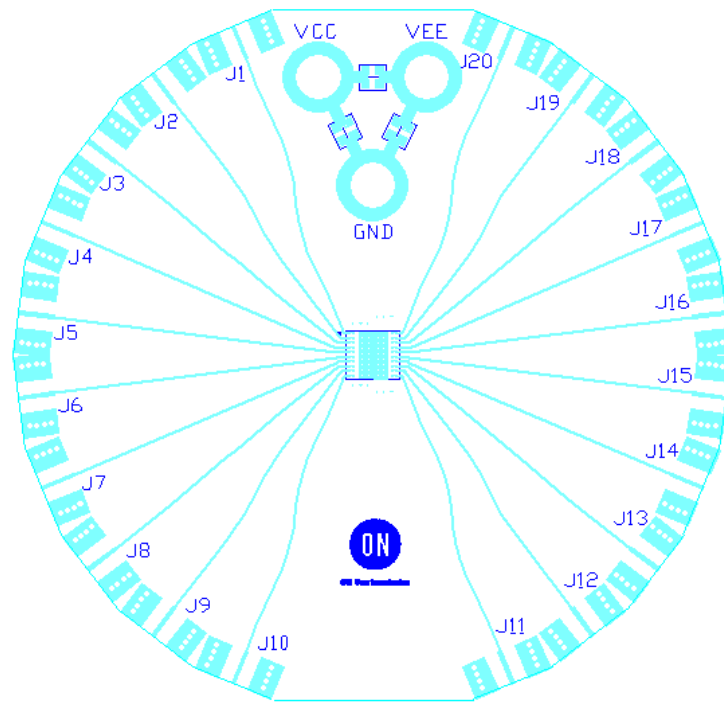
## ECLTSSOP20EVB

**Table 11. Bill of Materials**

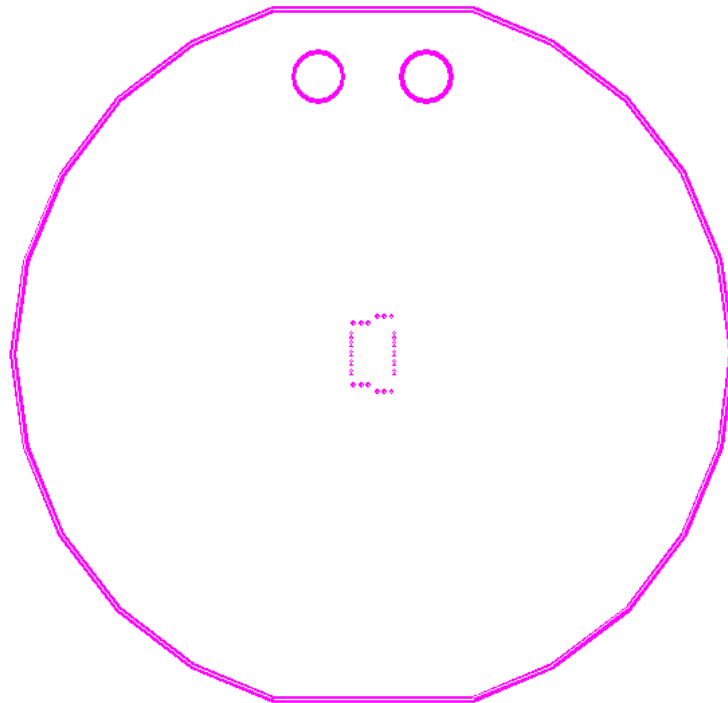
Components	Manufacturer	Description	Part Number	Web Site
SMA Connector	Johnson Components*	SMA Connector, Side Launch, Gold Plated	142-0701-851	<a href="http://www.johnsoncomponents.com">http://www.johnsoncomponents.com</a>
Banana Jack	Keystone*	Standard Jack	6096	<a href="http://www.keyelco.com">http://www.keyelco.com</a>
		Miniature Jack	6090	
Chip Capacitor	Johanson Dielectric*	0603 0.01 $\mu$ F	500R14Z100MV4E	<a href="http://www.johansondielectrics.com">http://www.johansondielectrics.com</a>
		0805 0.01 $\mu$ F	500R15Z100MV4E	
		0603 0.1 $\mu$ F	250R14Z101MV4E	
Chip Resistor	Panasonic*	0402 50 $\Omega$ $\pm$ 1% Precision Thick Film Chip Resistor	ERJ-2RKF49R9X	<a href="http://www.panasonic.com">http://www.panasonic.com</a>
Evaluation Board	ON Semiconductor	TSSOP 20 Evaluation Board	ECLTSSOP20EVB	<a href="http://www.onsemi.com">http://www.onsemi.com</a>
Device Samples	ON Semiconductor	TSSOP 20 Package Device	Various	<a href="http://www.onsemi.com">http://www.onsemi.com</a>

\*Components are available through most distributors, i.e. [www.newark.com](http://www.newark.com), [www.digikey.com](http://www.digikey.com).

## ECLTSSOP20EVB



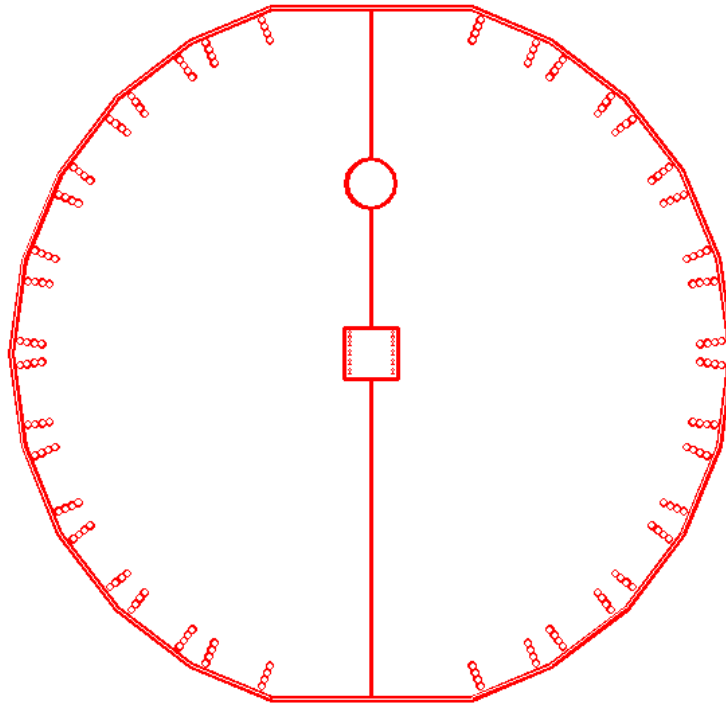
Top View



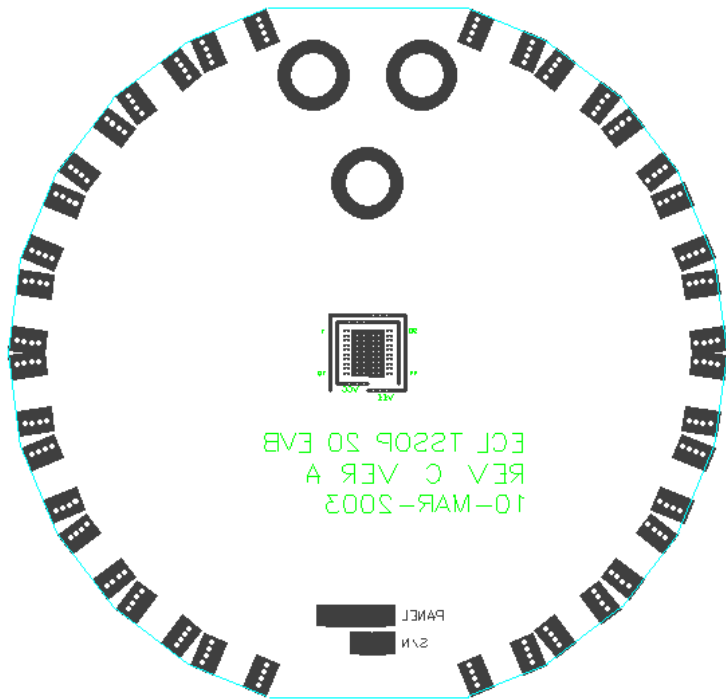
Second Layer (Ground Plane)

**Figure 14. Gerber Files**

## ECLTSSOP20EVB




Third Layer (Power and Ground Plane)  
(Left side –  $V_{CC}$ , Right side –  $V_{EE}$ , Middle Box – Ground)



Bottom Layer

**Figure 15. Gerber Files**



**ON Semiconductor** and  are registered trademarks of Semiconductor Components Industries, LLC (SCILLC). SCILLC reserves the right to make changes without further notice to any products herein. SCILLC makes no warranty, representation or guarantee regarding the suitability of its products for any particular purpose, nor does SCILLC assume any liability arising out of the application or use of any product or circuit, and specifically disclaims any and all liability, including without limitation special, consequential or incidental damages. "Typical" parameters which may be provided in SCILLC data sheets and/or specifications can and do vary in different applications and actual performance may vary over time. All operating parameters, including "Typicals" must be validated for each customer application by customer's technical experts. SCILLC does not convey any license under its patent rights nor the rights of others. SCILLC products are not designed, intended, or authorized for use as components in systems intended for surgical implant into the body, or other applications intended to support or sustain life, or for any other application in which the failure of the SCILLC product could create a situation where personal injury or death may occur. Should Buyer purchase or use SCILLC products for any such unintended or unauthorized application, Buyer shall indemnify and hold SCILLC and its officers, employees, subsidiaries, affiliates, and distributors harmless against all claims, costs, damages, and expenses, and reasonable attorney fees arising out of, directly or indirectly, any claim of personal injury or death associated with such unintended or unauthorized use, even if such claim alleges that SCILLC was negligent regarding the design or manufacture of the part. SCILLC is an Equal Opportunity/Affirmative Action Employer. This literature is subject to all applicable copyright laws and is not for resale in any manner.

## PUBLICATION ORDERING INFORMATION

### LITERATURE FULFILLMENT:

Literature Distribution Center for ON Semiconductor  
P.O. Box 5163, Denver, Colorado 80217 USA  
**Phone:** 303-675-2175 or 800-344-3860 Toll Free USA/Canada  
**Fax:** 303-675-2176 or 800-344-3867 Toll Free USA/Canada  
**Email:** [orderlit@onsemi.com](mailto:orderlit@onsemi.com)

**N. American Technical Support:** 800-282-9855 Toll Free  
USA/Canada

**Europe, Middle East and Africa Technical Support:**  
Phone: 421 33 790 2910

**Japan Customer Focus Center**  
Phone: 81-3-5817-1050

**ON Semiconductor Website:** [www.onsemi.com](http://www.onsemi.com)

**Order Literature:** <http://www.onsemi.com/orderlit>

For additional information, please contact your local  
Sales Representative