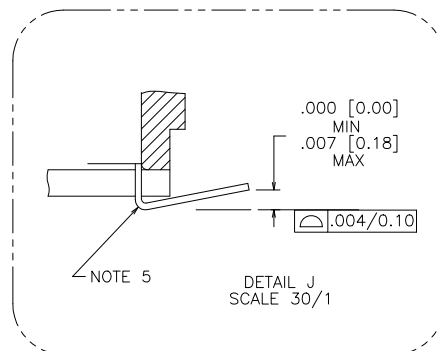
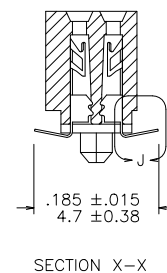
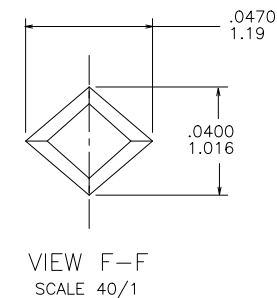
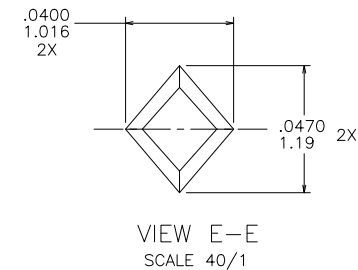
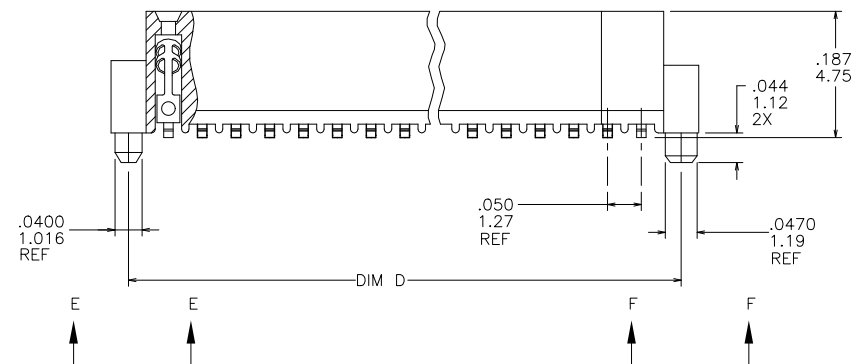
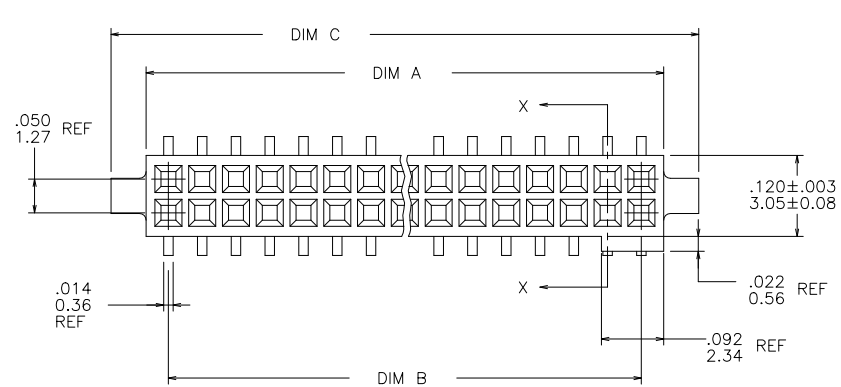


PRODUCT NUMBER
SEE TABLE

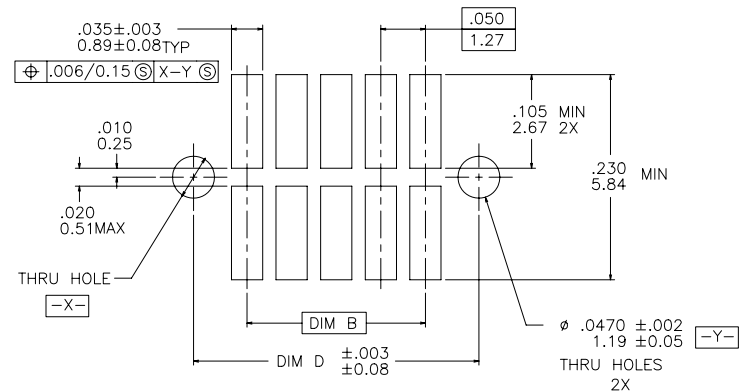


mat'l. code				surface		tolerance		projection		product family			
-				ISO 1302 ✓		ISO 406 ISO 1101				RIB CAGE			
ltr	ecn no	dr	date	tolerances unless otherwise specified						title			
K	V11674	CRG	7/12/01	angles	linear	xx ±.01/.3				.050/1.27cc V.C.C. SMT			
L	M05-0123	ERE	6/10/05			xxx ±.005/.13							
M	M06-0225	ERE	6/12/06			xxxx ±.0020/.050							
N	M06-0370	MHT	9/26/06	dr	M. CRONMAN	12/10/91		scale 4:1		dwg no			
P	M09-0058	MHT	4/06/09	engr	J. SHUEY	8/11/92							
R	N11-0168	YO	5/20/11	chr	G. GINGRICH	8/11/92							
S	ELX-N-010204	YO	2/8/12	appd	J. SHUEY	8/11/92				sheet 1 of 3 size			
sheet		revision	S	S	S					91872		A3	
index		sheet	1	2	3								

PRODUCT NO. NOTE 7	SIZE	DIM A	DIM B	DIM C	DIM D	SPECIAL PACKAGING	TAPE WIDTH PITCH	PIECES PER REEL
91872-605	2 X 5	.266/6.76	.200/5.08	.370/9.40	.3200/8.128	NONE	—	—
—610	2 X 10	.516/13.11	.450/11.43	.620/15.75	.5700/14.478	NONE	—	—
—615	2 X 15	.766/19.46	.700/17.78	.870/22.10	.8200/20.828	NONE	—	—
—620	2 X 20	1.016/25.81	.950/24.13	1.120/28.45	1.0700/27.178	NOTE 10	44 mm 12 mm	500
—625	2 X 25	1.266/32.16	1.200/30.48	1.370/34.80	1.3200/33.528	NONE	—	—
—630	2 X 30	1.516/38.51	1.450/36.83	1.620/41.15	1.5700/39.878	NONE	—	—
—635	2 X 35	1.766/44.86	1.700/43.18	1.870/47.50	1.8200/46.228	NONE	—	—
—640	2 X 40	2.016/51.21	1.950/49.53	2.120/53.85	2.0700/52.578	NONE	—	—
—645	2 X 45	2.266/57.56	2.200/55.88	2.370/60.20	2.3200/58.928	NONE	—	—
91872-650	2 X 50	2.516/63.91	2.450/62.23	2.620/66.55	2.5700/65.278	NONE	—	—

NOTES :

- HOUSING MATERIAL :
GLASS FILLED THERMOPLASTIC FLAME RETARDANT PER UL 94V-0
COLOR: NATURAL
- TERMINAL MATERIAL : BeCu
- TERMINAL PLATING :
30u".76u MIN HARD GOLD OR GXT OVER Ni ON CONTACT ZONES.
100u"/2.54u MIN Sn OVER Ni IN SOLDERING ZONES.
OTHERWISE GOLD FLASH OR UNPLATED.
- APPLICATION INFORMATION :
 - RECOMMENDED MOUNTING PAD PATTERN IS SHOWN IN FIGURE "A".
 - MATING PINS TO BE .0176/0.447 TO .0181/0.459 THICK.
 - MATING PIN TIPS TO BE IN TRUE POSITION TO MATING GRID WITHIN .008/0.20 DIA.
 - SUGGESTED MATING PIN LENGTH .130/3.30 ±.010/0.25.
- LEAD TIPS TO BE ABOVE HEEL UP TO .007/0.18 MAX.
COPLANARITY TO BE MEASURED AT LOWEST POINT (HEEL).
- ADD "CT" TO END DASH NUMBER FOR CONNECTOR WITH VACUUM CAP IN TUBE.
- ADD "LF" SUFFIX AT THE END OF PART NUMBER FOR LEAD FREE OPTION.
- THIS PRODUCT MEETS EUROPEAN UNION DIRECTIVES AND OTHER COUNTRY REGULATION AS DESCRIBED IN GS-22-008.
- THE HOUSING WILL WITHSTAND EXPOSURE TO 260°C PEAK TEMPERATURE FOR 20 SECONDS IN A CONVECTION INFRA-RED OR VAPOR PHASE REFLOW OVEN. SEE APPLICATION NOTES/PROCEDURES IF THEY ARE AVAILABLE.
- ADD "TR" TO END OF DASH NUMBER FOR TAPE AND REEL PACKAGING WITH CAP. TOOLED ONLY FOR NOTED CONNECTORS.
- PRODUCT SPECIFICATION PER BUS-12-087.



mat'l. code —				surface ISO 1302 ✓	tolerance ISO 406 ISO 1101	projection INCH/MM	product family RIB CAGE
ltr	ecn	no	dr	tolerances unless otherwise specified		scale 4:1	title .050/1.27cc V.C.C. SMT w/POL. .044/1.12 SHORT PEG
S				angles	linear		
				σ±2'	xxx ±.005/.13 xxxx ±.0020/.050		
			dr	M. CRONMAN	12/10/91		dwg no 91872
			enr	J. SHUEY	8/11/92		sheet 2 of 3 size A3
			chr	G. GINGRICH	8/11/92		
			appd	J. SHUEY	8/11/92		
sheet index	revision sheet						type Product Customer Drawing

1

2 3

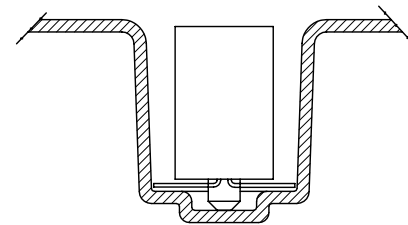
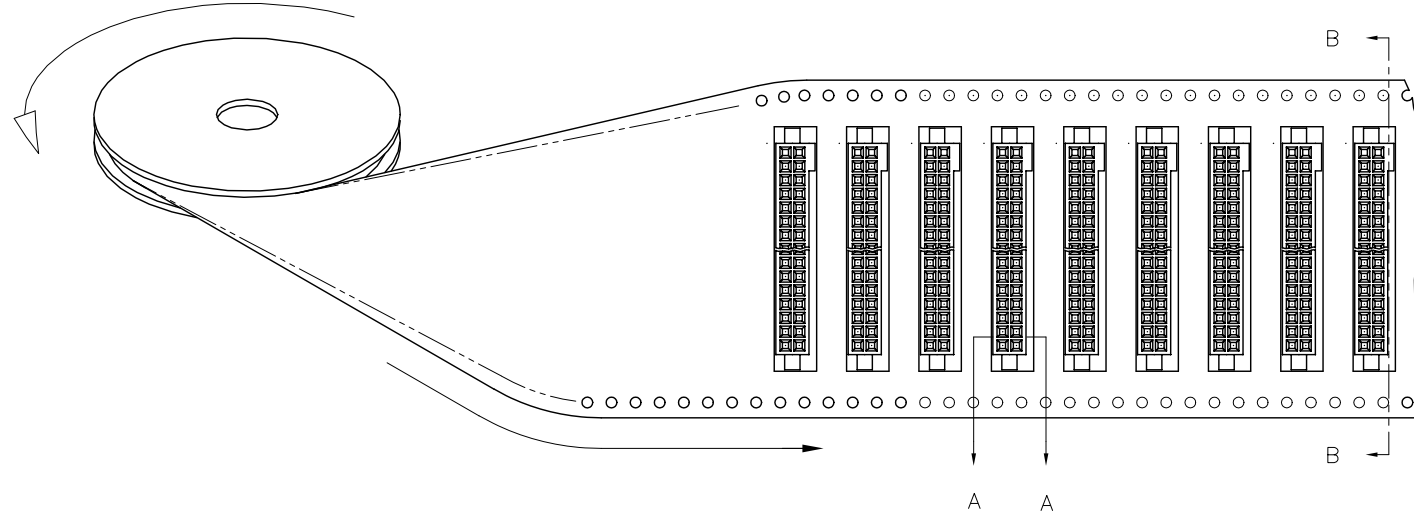
4

5

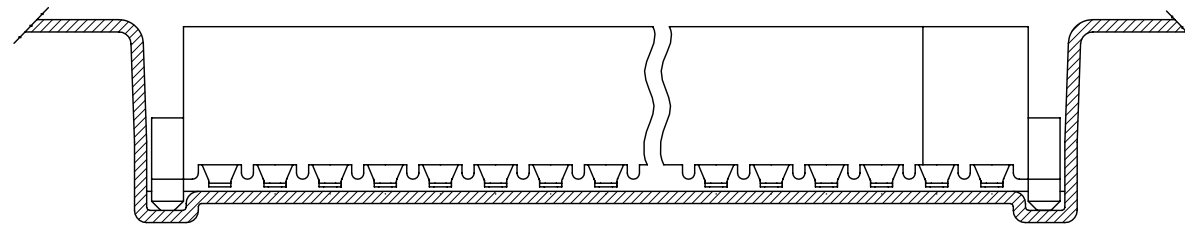
6

REFERENCE ONLY

TAPE WIDTH'S 32mm AND ABOVE HAS BOTH FEED TRACKS,
BELOW 32mm HAS TOP FEED TRACK ONLY.

UNREELING
DIRECTION

SECTION A-A



SECTION B-B

mat'l. code —				surface ISO 1302 ✓	tolerance ISO 406 ISO 1101	projection INCH/MM scale 4:1	product family RIB CAGE			
ltr	ec	no	dr	date	tolerances unless otherwise specified		title			
S					angles	linear	.050/1.27cc V.C.C. SMT			
					σ±2'	xxx ±.005/.13 xxxx ±.0020/.050	w/POL. .044/1.12 SHORT PEG			
				dr	M. CRONMAN	12/10/91	dwg no			
				enr	J. SHUEY	8/11/92	sheet 3 of 3 size			
				chr	G. GINGRICH	8/11/92	91872			
				appd	J. SHUEY	8/11/92	A3			
sheet index		revision sheet					type Product Customer Drawing			

Mouser Electronics

Authorized Distributor

Click to View Pricing, Inventory, Delivery & Lifecycle Information:

FCI:

91872-620LF