

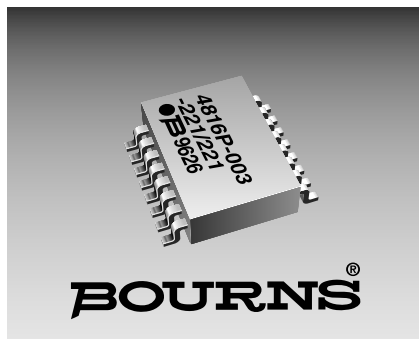
Distributed by:

JAMECO[®]
ELECTRONICS

www.Jameco.com ♦ 1-800-831-4242

The content and copyrights of the attached
material are the property of its owner.

Jameco Part Number 859018



ASIC COMPANION NETWORK MOLDED MEDIUM BODY SOIC .225" WIDE, WITH .050" LEAD PITCH - 16 PIN

- Used in conjunction with Mosys MD9000 series MDRAMs and Tseng Labs ET6000 Graphics Chip Sets
- Compliant leads for thermal expansion
- Miniaturized circuitry and packaging for space reduction

Model 4816P-003-221/221

® Resistor Network SOIC

Electrical Characteristics

Resistance

R1220 ohms

R2220 ohms

Absolute Tolerance ±2%

Temperature Coefficient

..... ±100ppm/°C

TCR Tracking±150ppm/°C

Temperature Range

.....-55°C to +125°C

Maximum Operating Voltage

.....50VDC/or √ PR

Insulation Resistance.....10,000 MΩ

Product Reliability

Thermal Shock..... ΔR MAX.

Power Condition ±0.50%

Vibration..... ±0.25%

Low Temperature Storage ±0.25%

High Temperature Exposure ±0.50%

Low Temperature Operation ±0.25%

Load Life ±1.0%

Moisture Resistance ±0.5%

Resistance to Soldering Heat ±0.25%

Short Time Overload..... ±0.25%

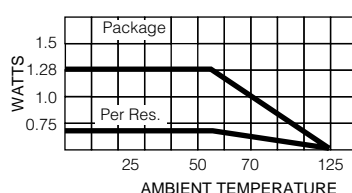
Physical Characteristics

Lead MaterialCopper, solder coated

Body MaterialMolded epoxy

Std. PackagingTape & reel

PACKAGE POWER TEMPERATURE DERATING CURVE



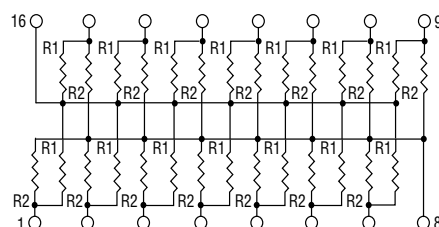
Package Power Ratings at 70°C

16 Pin1.28 watts Max.

Power Per Resistor at 70°C

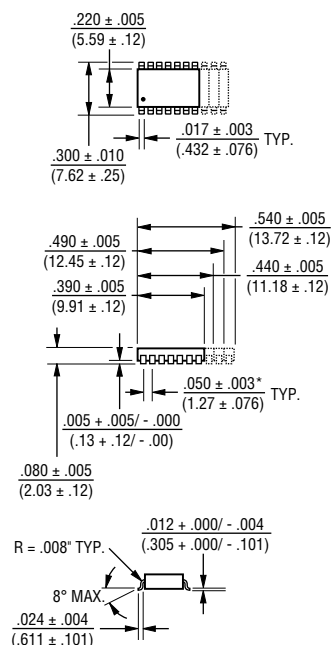
..... .080 watts Max.

SCHEMATIC



DIMENSIONS

4800P



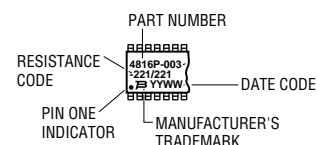
Lead coplanarity .004 inch max. at mounting surface.

Governing dimensions are in inches. Dimensions in parentheses are metric (mm) and are approximate.

*Terminal centerline to centerline measurements made at point of emergence of the lead from the body.

TYPICAL PART MARKING

Represents total content. Layout may vary.



INTEGRATED TECHNOLOGIES DIVISION
NETWORKS PRODUCTS

1400 North 1000 West
Logan, UT 84321
(801) 750-7200, FAX: (801) 750-7253