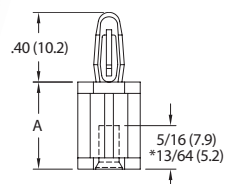


## SCREW MOUNT CIRCUIT BOARD SUPPORTS


**TCBS**  
**Self-Tapping & Threaded Support**


Snap-Lock:  
.156 (4.0)  
Panel Thickness:  
.062 (1.6)

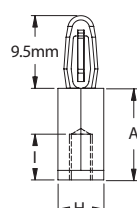
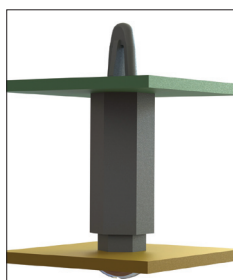
## Specifications:

- Material: Nylon 6/6
- Color: Natural

## #6 Self Tapping Screw

Item No.	UL94 V-2	UL94 V-0	A		Bulk Pack Qty.
	In	mm	In	mm	
TCBS-4-01*	TCBS-4-19*	0.250	6.4	1000	
TCBS-6-01	TCBS-6-19	0.375	9.5	1000	
TCBS-8-01	TCBS-8-19	0.500	12.7	1000	
TCBS-10-01	TCBS-10-19	0.625	15.9	1000	
TCBS-12-01	TCBS-12-19	0.750	19.1	1000	

Item No.	UL94 V-2	UL94 V-0	A		Bulk Pack Qty.
	In	mm	In	mm	
TCBS-14-01	TCBS-14-19	0.875	22.2	1000	
TCBS-16-01	TCBS-16-19	1.000	25.4	1000	
TCBS-18-01	TCBS-18-19	1.125	28.6	1000	
TCBS-20-01	TCBS-20-19	1.250	31.8	1000	
TCBS-22-01	TCBS-22-19	1.416	35.7	1000	

**TCBN**  
**Metric Female Threaded Circuit Board Support**


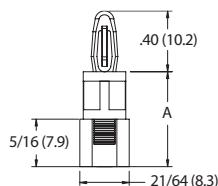
Top Hole:  
Snap-lock: 4mm  
Panel Thickness:  
1.6mm

Bottom Hole:  
See Table for  
Female Thread Size

- Material: UL94 HB, Nylon 6/6
- Color: Black

## #M3 or M4 Screw

Item No.	Thread	"H" mm	"A" Standoff Height mm	"I" mm	Bulk Pack Qty.
TCBN-T1-M3-6-5	M3	6	5	3	500
TCBN-T1-M3-6-6	M3	6	6	4	500
TCBN-T1-M3-6-8	M3	6	8	6	500
TCBN-T1-M4-8-5	M4	8	5	3	500
TCBN-T1-M4-8-6	M4	8	6	4	500
TCBN-T1-M4-8-8	M4	8	8	6	500

**LCBS-TF**  
**Locking Support, Threaded Female**


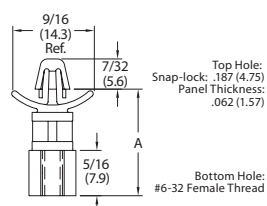
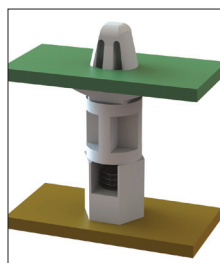
Snap-Lock:  
.156 (4.0)  
Panel Thickness:  
.062 (1.6)

## Specifications:

- Material: Nylon 6/6
- Color: Natural
- Flame Class: UL94 V-2

## #6 - 32 Screw

Item No.	A		Bulk Pack Qty.
	In	mm	
LCBS-TF-6-01	0.375	9.5	1000
LCBS-TF-8-01	0.500	12.7	1000
LCBS-TF-10-01	0.625	15.9	1000
LCBS-TF-12-01	0.750	19.1	1000
LCBS-TF-14-01	0.875	22.2	1000
LCBS-TF-16-01	1.000	25.4	1000

**LCCBS-TF**  
**Locking Circuit Board Support, Threaded Female**


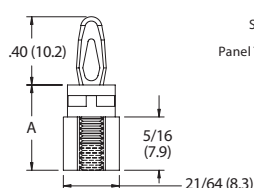
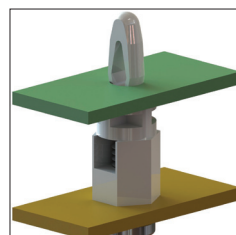
Top Hole:  
Snap-lock: .187 (4.75)  
Panel Thickness:  
.062 (1.57)

Bottom Hole:  
#6-32 Female Thread

- PC board is locked securely in place
- Internal thread to be mounted with a #6-32 screw
- Material: Nylon 6/6
- Color: Natural

## #6 - 32 Screw

Item No.	A		Bulk Pack Qty.
	UL94 V-2	UL94 V-0	
LCCBS-TF-9-01	LCCBS-TF-9-19	.534 (13.56)	1000
LCCBS-TF-10-01	LCCBS-TF-10-19	.672 (17.07)	1000
LCCBS-TF-12-01	LCCBS-TF-12-19	.797 (20.24)	1000
LCCBS-TF-14-01	LCCBS-TF-14-19	.922 (23.42)	1000
LCCBS-TF-16-01	LCCBS-TF-16-19	1.047 (25.40)	1000

**CBS-TF**  
**Circuit Board Support, Threaded Female**


Snap-Lock:  
.156 (4.0)  
Panel Thickness:  
.062 (1.6)

## Specifications:

- Material: Nylon 6/6
- Color: Natural

## #6 - 32 Screw

Item No.	A			Bulk Pack Qty.
	UL94 V-2	UL94 V-0		
CBS-TF-6-01	CBS-TF-6-19	0.375	9.5	1000
CBS-TF-8-01	CBS-TF-8-19	0.500	12.7	1000
CBS-TF-10-01	CBS-TF-10-19	0.625	15.9	1000
CBS-TF-12-01	CBS-TF-12-19	0.750	19.1	1000
CBS-TF-14-01	CBS-TF-14-19	0.875	22.2	1000
CBS-TF-16-01	CBS-TF-16-19	1.000	25.4	1000