

**Ordering number FP11084\_LISA2-RS-CLIP**

Family	Lisa2	FWHM	16 degrees
Type	Assembly	Efficiency	89 %
LED	Oslon SSL 80	cd/Im	-
Color	Black	Gerber File	Available
Diameter	9.9 mm		
Height	6.6 mm		
Style	Round		
Optic Material	PMMA		
Holder Material	PC		
Fastening	Clips, glue		
Status	Ready		

**Ordering number FP11081\_LISA2-M-CLIP**

Family	Lisa2	FWHM	23 degrees
Type	Assembly	Efficiency	90 %
LED	Oslon SSL 80	cd/Im	-
Color	Black	Gerber File	Available
Diameter	9.9 mm		
Height	6.6 mm		
Style	Round		
Optic Material	PMMA		
Holder Material	PC		
Fastening	Clips, glue		
Status	Ready		

**Ordering number FP11082\_LISA2-W-CLIP**

Family	Lisa2	FWHM	36 degrees
Type	Assembly	Efficiency	88 %
LED	Oslon SSL 80	cd/Im	1.730
Color	Black	Gerber File	Available
Diameter	9.9 mm		
Height	6.6 mm		
Style	Round		
Optic Material	PMMA		
Holder Material	PC		
Fastening	Clips, glue		
Status	Ready		

**Ordering number FP11120\_LISA2-O-CLIP**

Family	Lisa2	FWHM	48+19 degrees
Type	Assembly	Efficiency	80 %
LED	Oslon SSL 80	cd/Im	2.200
Color	Black	Gerber File	Available
Diameter	9.9 mm		
Height	6.6 mm		
Style	Round		
Optic Material	PMMA		
Holder Material	PC		
Fastening	Clips, glue		
Status	Ready		

**Ordering number FP11857\_LISA2-O-90-CLIP**

Family	Lisa2	FWHM	48+19 degrees
Type	Assembly	Efficiency	80 %
LED	Oslon SSL 80	cd/Im	-
Color	Black	Gerber File	Available
Diameter	9.9 mm		
Height	6.6 mm		
Style	Round		
Optic Material	PMMA		
Holder Material	PC		
Fastening	Clips, glue		
Status	Ready		

**Ordering number FP11083\_LISA2-WW-CLIP**

Family	Lisa2	FWHM	60 degrees
Type	Assembly	Efficiency	87 %
LED	Oslon SSL 80	cd/Im	-
Color	Black	Gerber File	Available
Diameter	9.9 mm		
Height	7 mm		
Style	Round		
Optic Material	PMMA		
Holder Material	PC		
Fastening	Clips, glue		
Status	Ready		

**Ordering number FP11958\_LISA2-WWW-CLIP**

Family	Lisa2	FWHM	70 degrees
Type	Assembly	Efficiency	77 %
LED	Oslon SSL 80	cd/Im	0.700
Color	Black	Gerber File	Available
Diameter	9.9 mm		
Height	6.6 mm		
Style	Round		
Optic Material	PMMA		
Holder Material	PC		
Fastening	Clips, glue		
Status	Ready		

**NOTE: The typical divergence will be changed by different color, chip size and chip position tolerance. The typical total divergence is the full angle measured where the luminous intensity is half of the peak value.**



## PRODUCT DATASHEET

### Lisa2 series

last update 16/10/2013



#### GENERAL INFORMATION

- Product series especially designed & optimized for Oscon SSL 80 series of LEDs.
- Special care taken to make light distribution as uniform as possible.
- Lens material optical grade PMMA with high UV and temperature resistance (105 degrees of Celcius / 220 degrees of Fahrenheit). Allows use of high current and temperature conditions.

Please find more information about used material from below:

[http://ledil.fi/sites/default/files/Documents/Technical/Material/PMMA%20N%20UL94\\_Yellow%20Card.pdf](http://ledil.fi/sites/default/files/Documents/Technical/Material/PMMA%20N%20UL94_Yellow%20Card.pdf)

<http://ledil.fi/sites/default/files/Documents/Technical/Material/PMMA%20N%20PLEXIGLAS-Datasheet.pdf>

- Optic holder molded by high quality PC material (120 degrees of Celcius / 248 degrees of Fahrenheit).

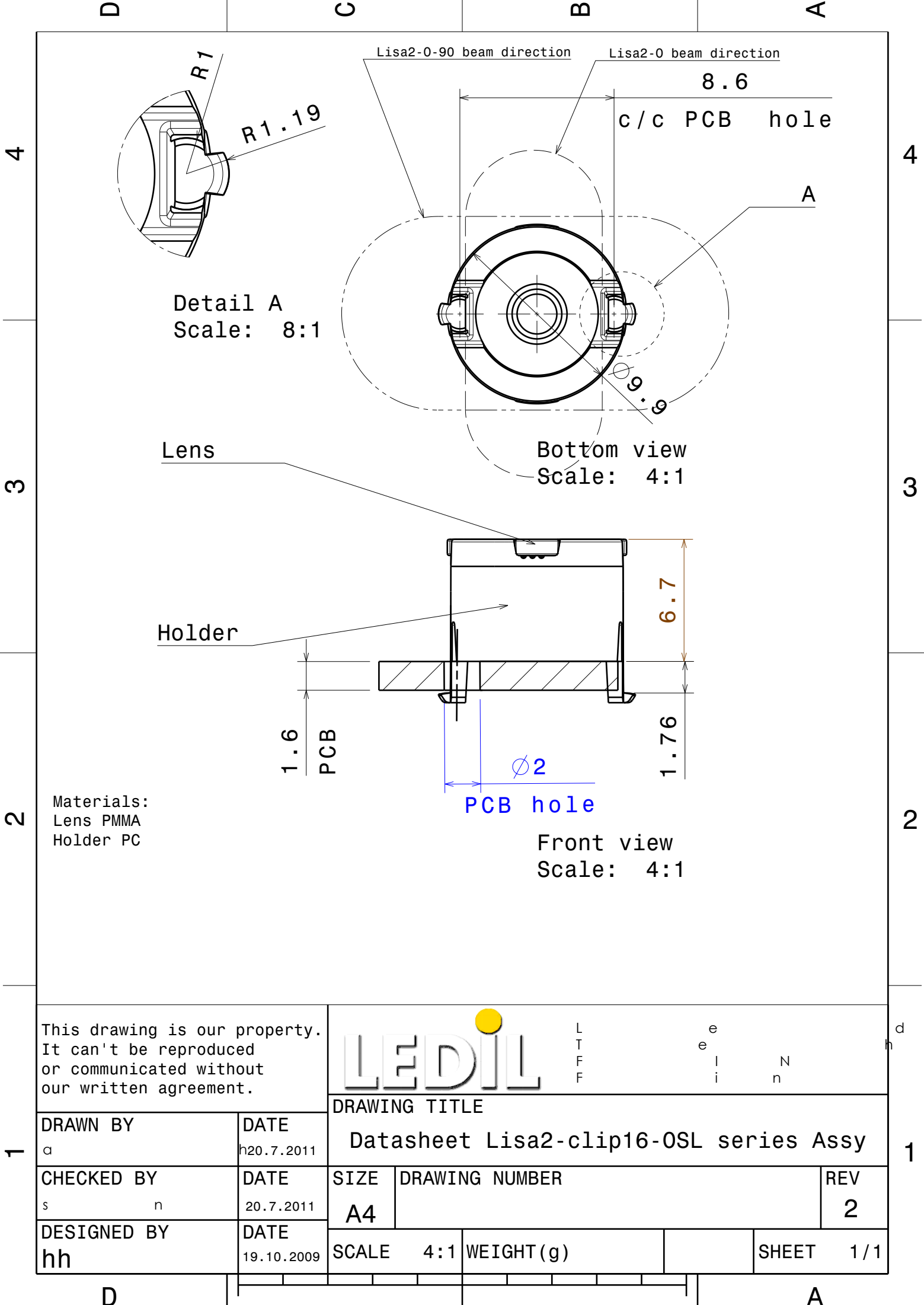
- Fastening to PCB with appropriate adhesive. By clicking link below you can find Ledil recommended glue options.

[http://www.ledil.com/datasheets/DataSheet\\_GLUES.pdf](http://www.ledil.com/datasheets/DataSheet_GLUES.pdf)

**NOTE 1: We advise customer to ensure the suitability and sufficiency of the bond in the end product. For example, mechanical stress, vibration and holes on the surface of the circuit board weaken the strength of the glue.**

**NOTE 2: All surfaces where glue is applied must be clean, dry and free from grease and dirt. If cleaning of PCB surfaces is needed, please follow strictly the cleaning instructions of your LED manufacturer -this is important as cleaning shall under no circumstances damage LEDs or other electronics components on the PCB.**

**Further note that optical components shall not be cleaned with any chemicals - only micro fiber cloth may be used to remove fingerprints or other traces from handling.**



Materials:  
Lens PMMA  
Holder PC

This drawing is our property.  
It can't be reproduced  
or communicated without  
our written agreement.



L  
T  
F  
F

e  
e  
i  
n

N

d

DRAWING TITLE

Datasheet Lisa2-clip16-0SL series Assy

DRAWN BY

a

DATE

20.7.2011

CHECKED BY

s

n

DATE

20.7.2011

DESIGNED BY

hh

DATE

19.10.2009

SIZE

A4

DRAWING NUMBER

REV

2

SCALE

4:1

WEIGHT (g)

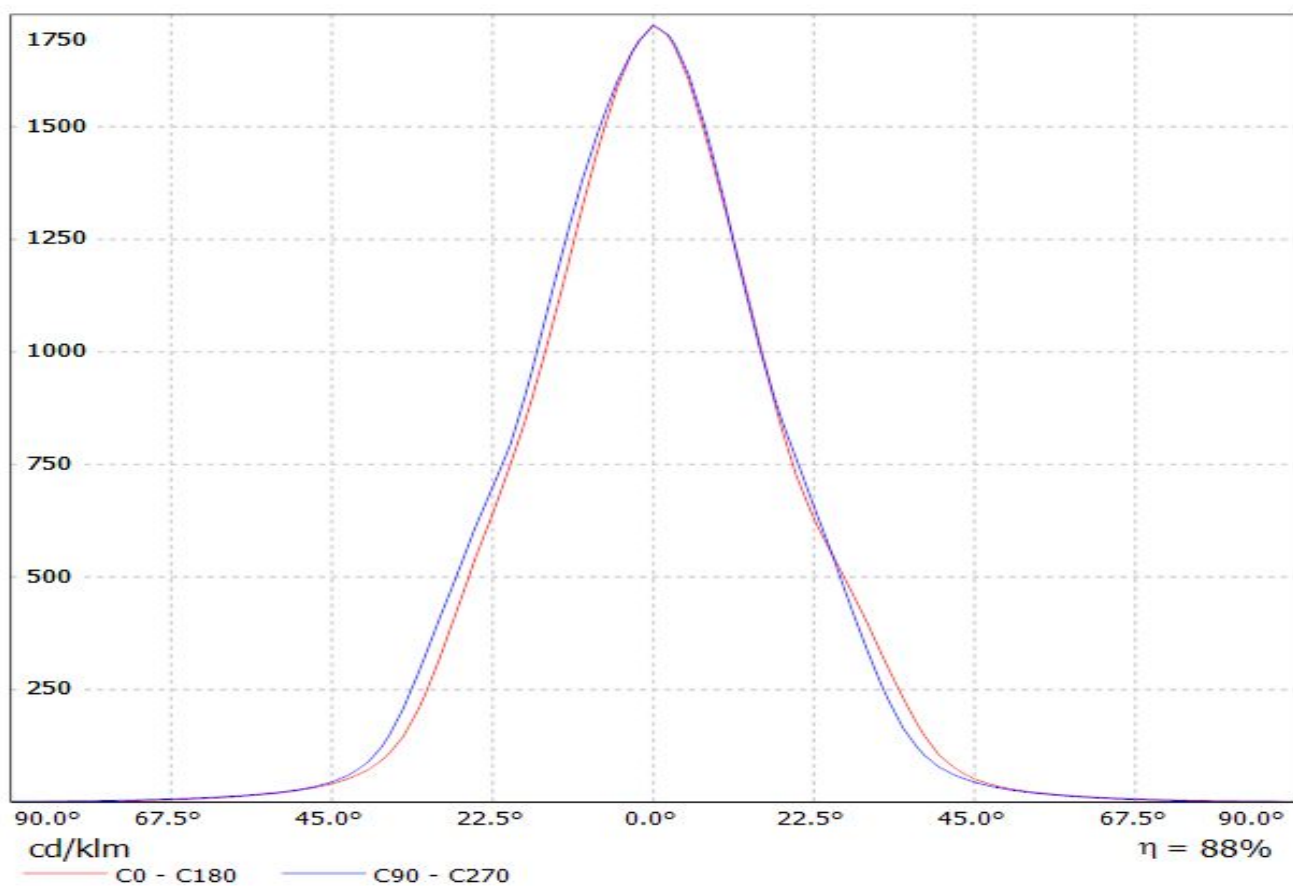
SHEET

1/1

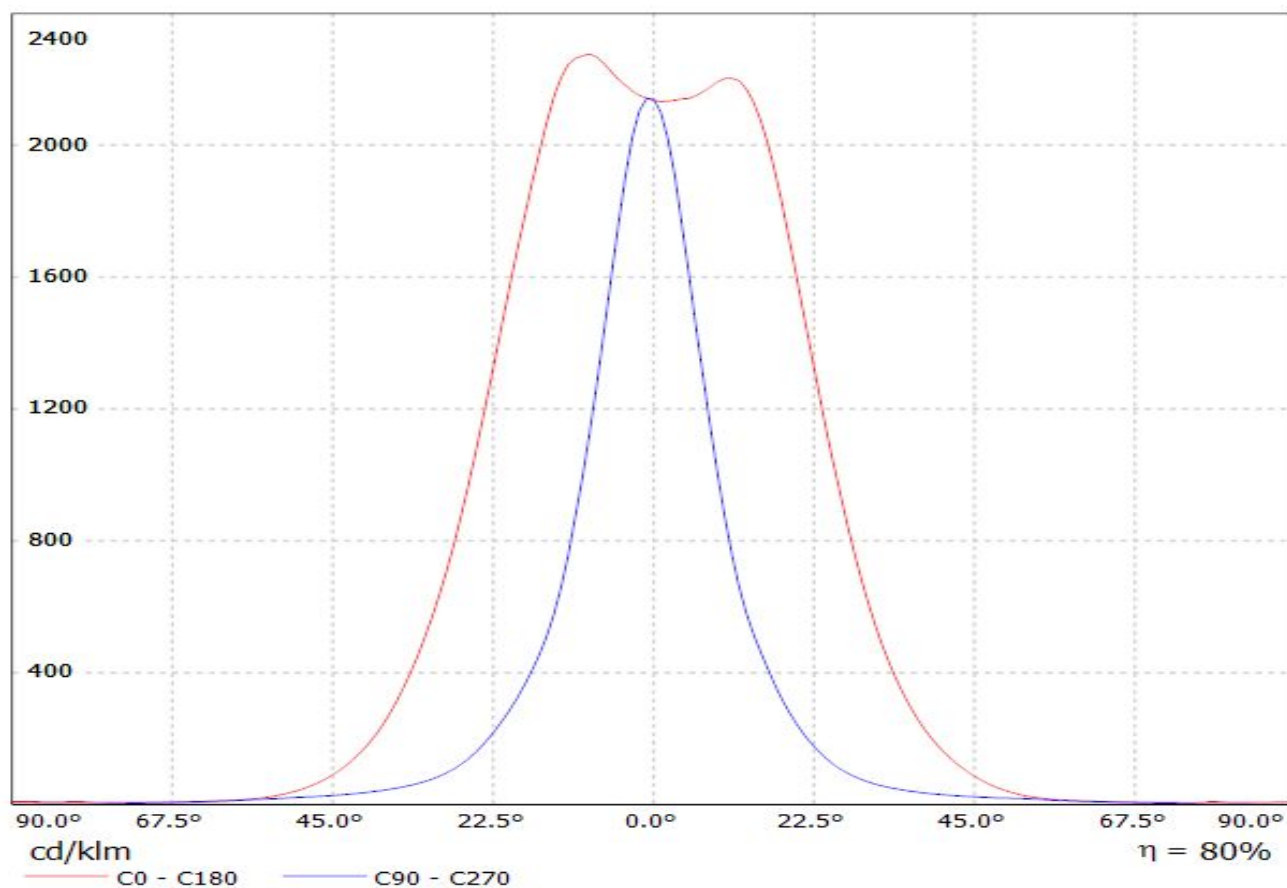
D

A

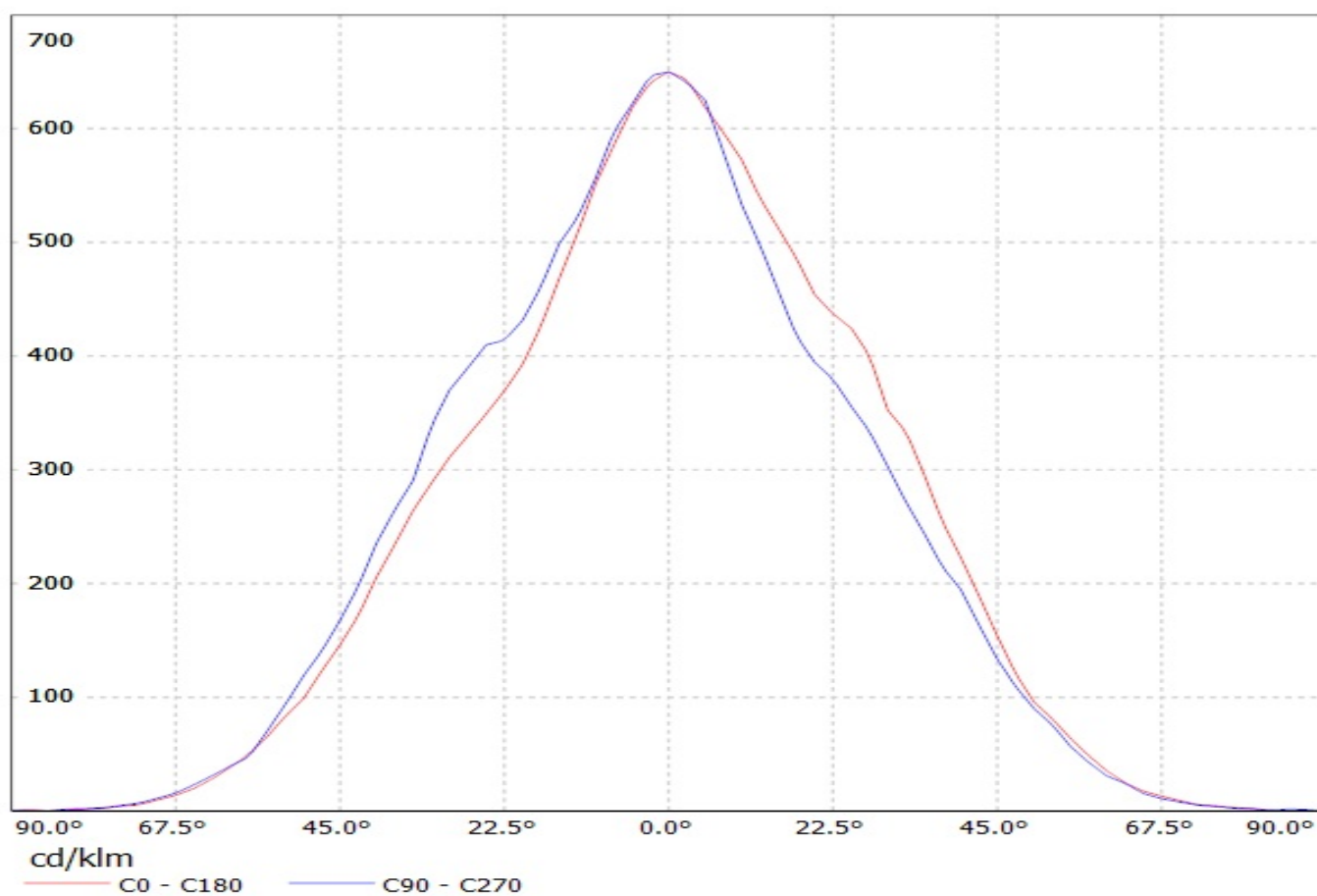
Luminaire: LEDiL Oy FP11002 & FP11082\_LISA2-W\_(SSL80) Eff.87.5%  
Lamps: 1 x Oslon SSL80 (77.5072lm@250mA)



Luminaire: LEDiL Oy FP11124&FP11120\_Lisa2-O\_(SSL80) Eff.80.4%  
Lamps: 1 x Oslon SSL80 (77.5621lm@250mA)

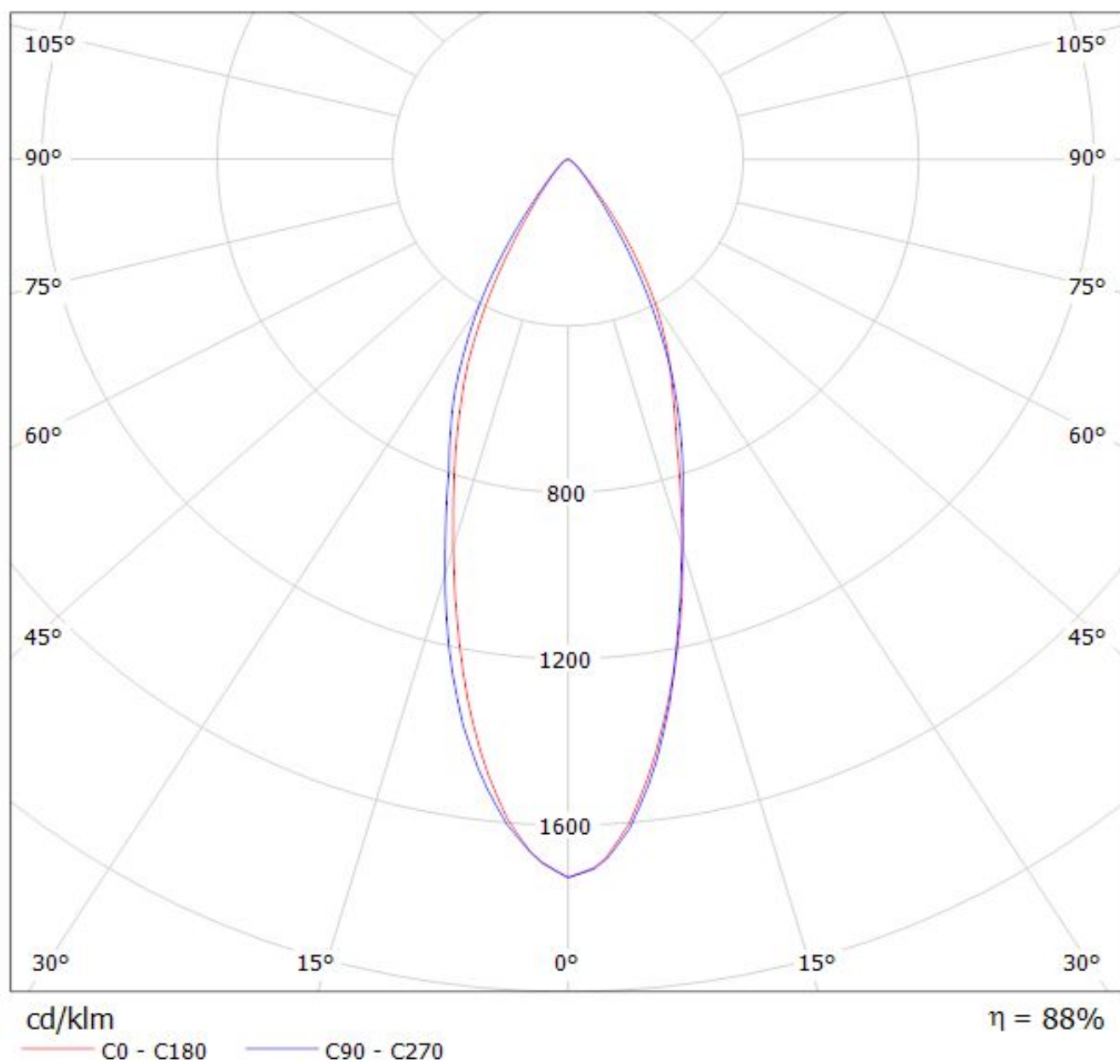


Luminaire: Ledil Oy FP11957 & FP11958\_LISA2-WWW (Osram Oslon 80 79lm @ 250mA) Efficiency=74%  
Lamps: 1 x Osram Oslon 80 79lm @ 250mA



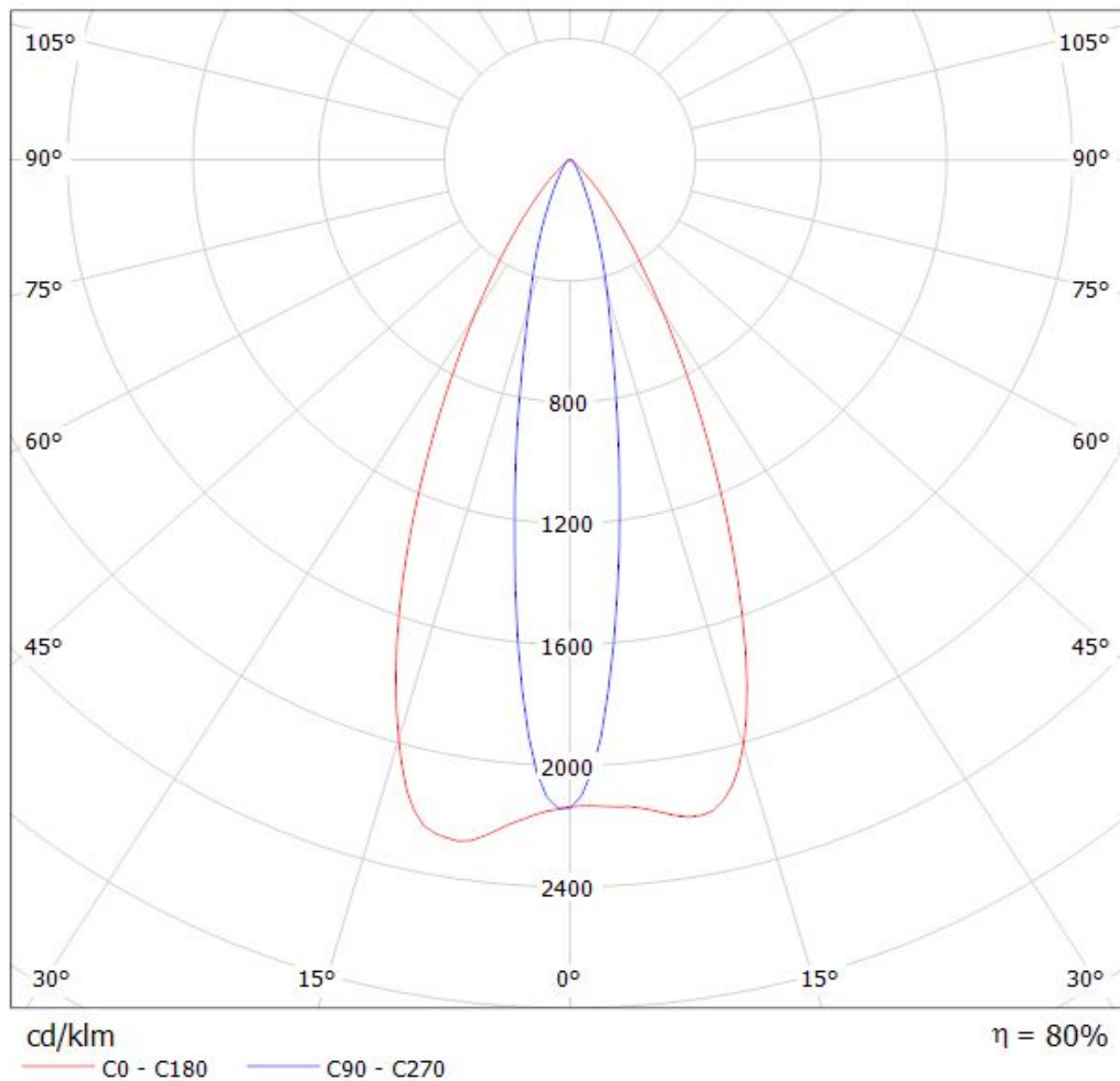


Luminaire: LEDiL Oy FP11002 & FP11082\_LISA2-W\_(SSL80) Eff.87.5%  
Lamps: 1 x Oslon SSL80 (77.5072lm@250mA)

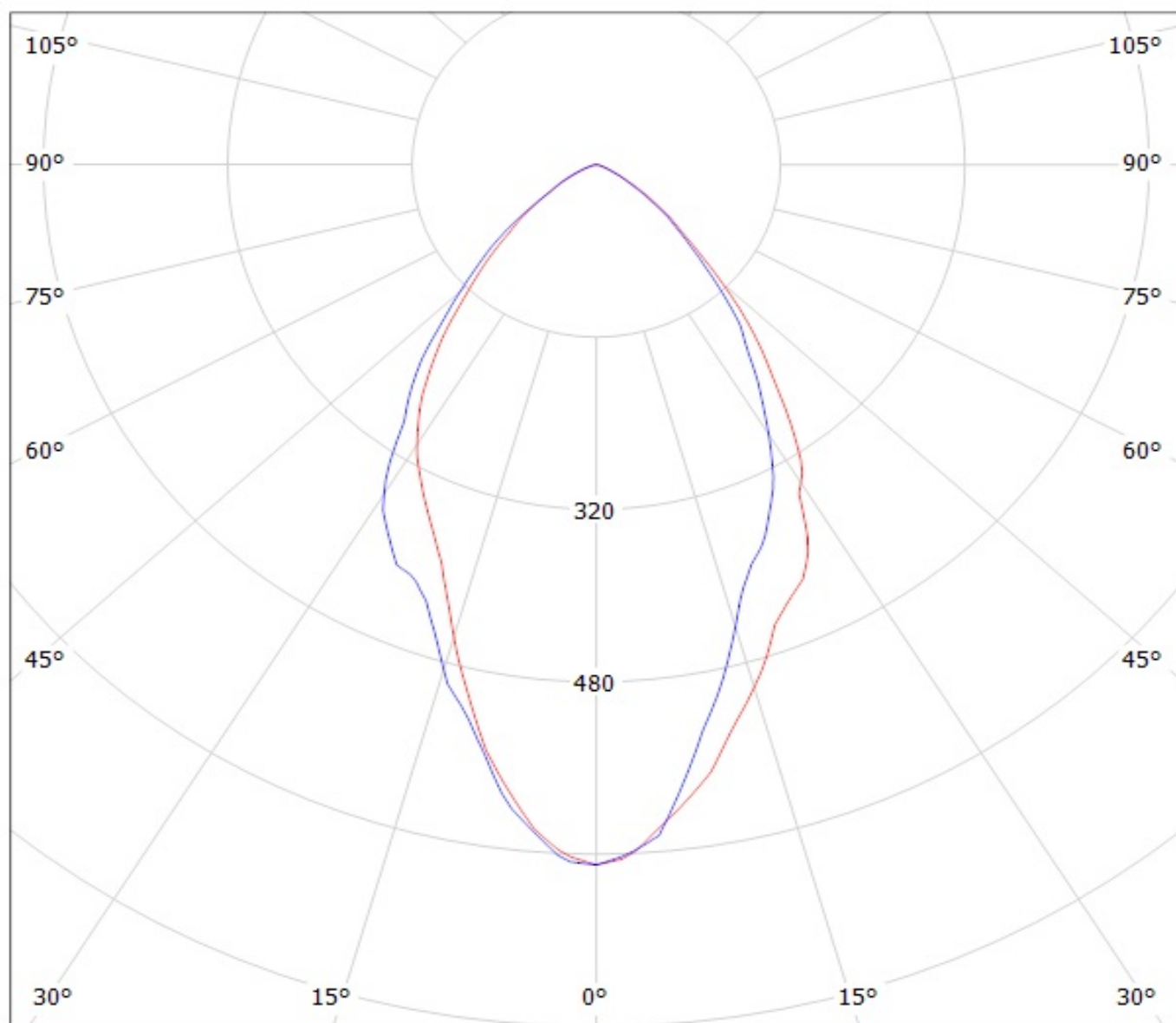




Luminaire: LEDiL Oy FP11124&FP11120\_Lisa2-O\_(SSL80) Eff.80.4%  
Lamps: 1 x Oslon SSL80 (77.5621lm@250mA)



Luminaire: Ledil Oy FP11957 & FP11958\_LISA2-WWW (Osram Oslon 80 79lm @ 250mA) Efficiency=74%  
Lamps: 1 x Osram Oslon 80 79lm @ 250mA



cd/klm

— C0 - C180

— C90 - C270