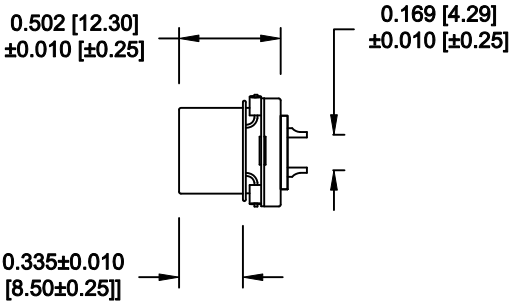
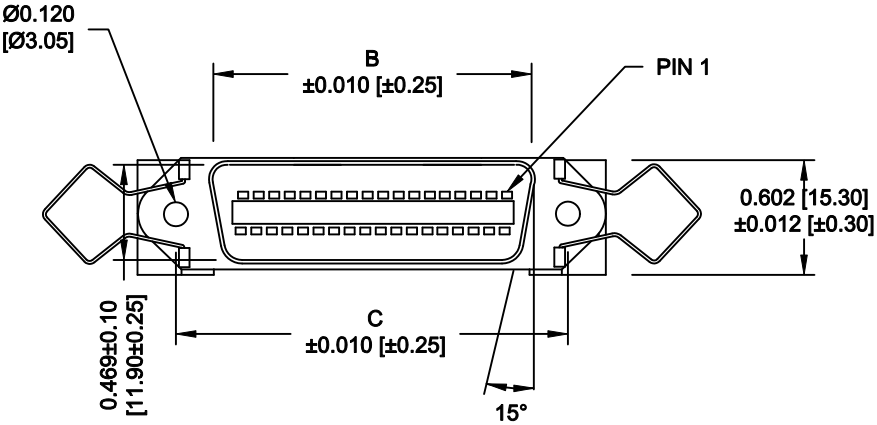
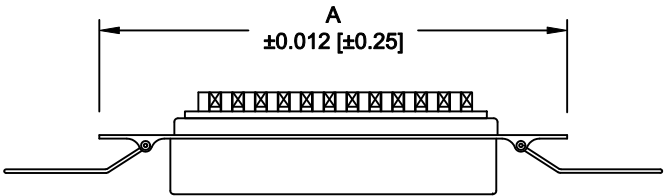


DESCRIPTION: 0.085 RIBBON - SOLDER CUP

	014	024	036	050
A	1.728	2.154	2.667	3.264
	43.90	54.70	67.75	82.90
B	0.992	1.417	1.925	2.624
	25.20	36.00	48.90	64.10
C	1.417	1.843	2.352	2.947
	36.00	46.80	59.74	74.85



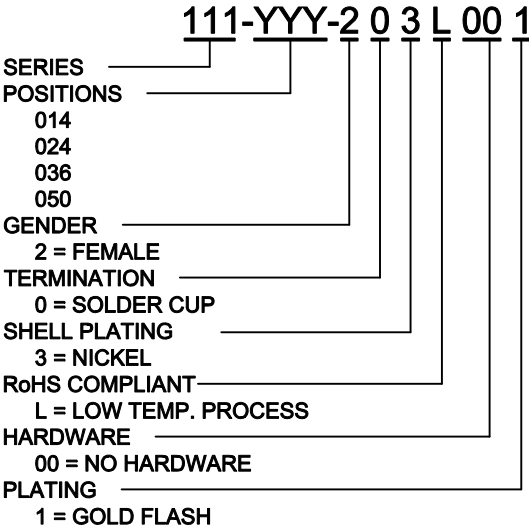
WILL ACCEPT 26-20 AWG WIRE

MATERIAL:


INSULATION: PBT - UL 94V-0 RATED  
CONTACTS: PHOSPHOR BRONZE  
SHELL: STEEL, NICKEL PLATED

ELECTRICAL:

CURRENT RATING: 1 AMPS  
VOLTAGE RATING: 1,000V AC r.m.s.  
INSULATION RESISTANCE: 1,000MegOhms Min. @ 500VDC  
CONTACT RESISTANCE: 30MilliOhms Max.  
OPERATING TEMPERATURE: -55°C TO +125°C



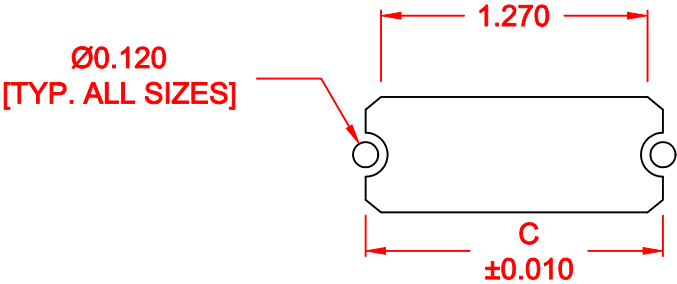
DO NOT SCALE FROM DRAWING

	THESE DRAWINGS AND SPECIFICATIONS ARE THE PROPERTY OF NorComp AND SHALL NOT BE REPRODUCED, COPIED OR USED AS THE BASIS FOR THE MANUFACTURE OF SALE OF APPARATUS WITHOUT WRITTEN PERMISSION.	DRAWN: <b>WAYNE ROBBINS</b>		DATE: <b>09-15-05</b>	
		CHECKED:		DATE:	
<b>NorComp</b>	SCALE: <b>NONE</b>		SHEET <b>1</b> OF <b>2</b>		REV <b>7</b>
	DWG NO. <b>111-YYY-203L001</b>				

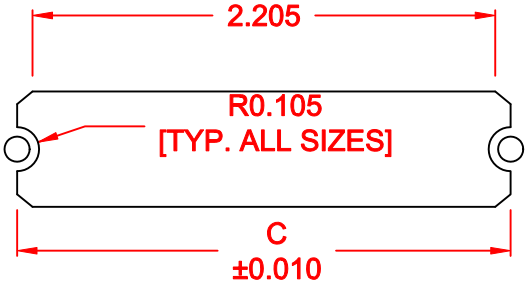
RoHS COMPLIANT

NorComp

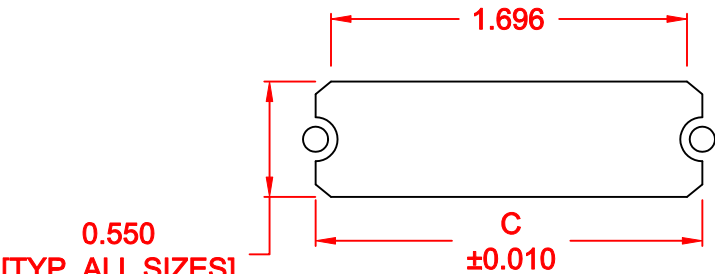
	014	024	036	050
C	1.417	1.843	2.352	2.947
	36.00	46.80	59.74	74.85



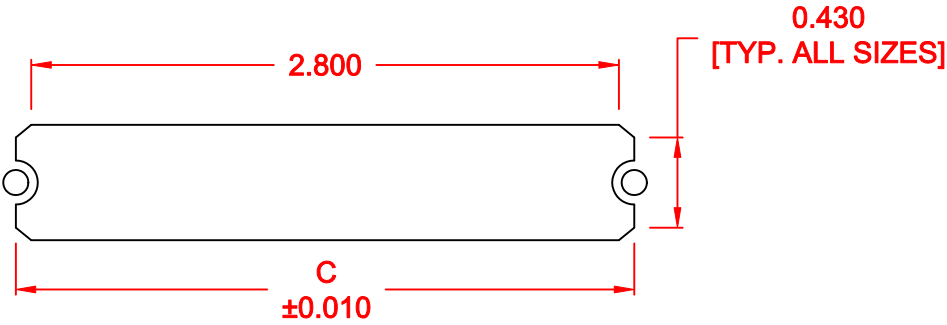
14 POSITION



36 POSITION



24 POSITION




50 POSITION

\*\*\*NOTE\*\*\*DIMENSION "C" =  
CENTER TO CENTER OF MOUNTING HOLES  
CENTER OF RADI  
OVERALL LENGTH OF CUTOUT

RoHS COMPLIANT

DO NOT SCALE FROM DRAWING

	THESE DRAWINGS AND SPECIFICATIONS ARE THE PROPERTY OF NorComp AND SHALL NOT BE REPRODUCED, COPIED OR USED AS THE BASIS FOR THE MANUFACTURE OF SALE OF APPARATUS WITHOUT WRITTEN PERMISSION.	DRAWN: M. SIGMON		DATE: 01-14-11	
		CHECKED:		DATE:	
<div>NorComp</div>	SCALE: NONE		SHEET 2		OF 2
	DWG NO.		111-YYY-203L001		
		REV 7			

# Mouser Electronics

Authorized Distributor

Click to View Pricing, Inventory, Delivery & Lifecycle Information:

NorComp:

[111-014-203L001](#) [111-024-203L001](#) [111-036-203L001](#) [111-050-203L001](#)